

PROJECT 160 FRONT STREET WEST - TORONTO
LEVEL 47

CONCEPT DESIGN - AUGUST 30, 2022

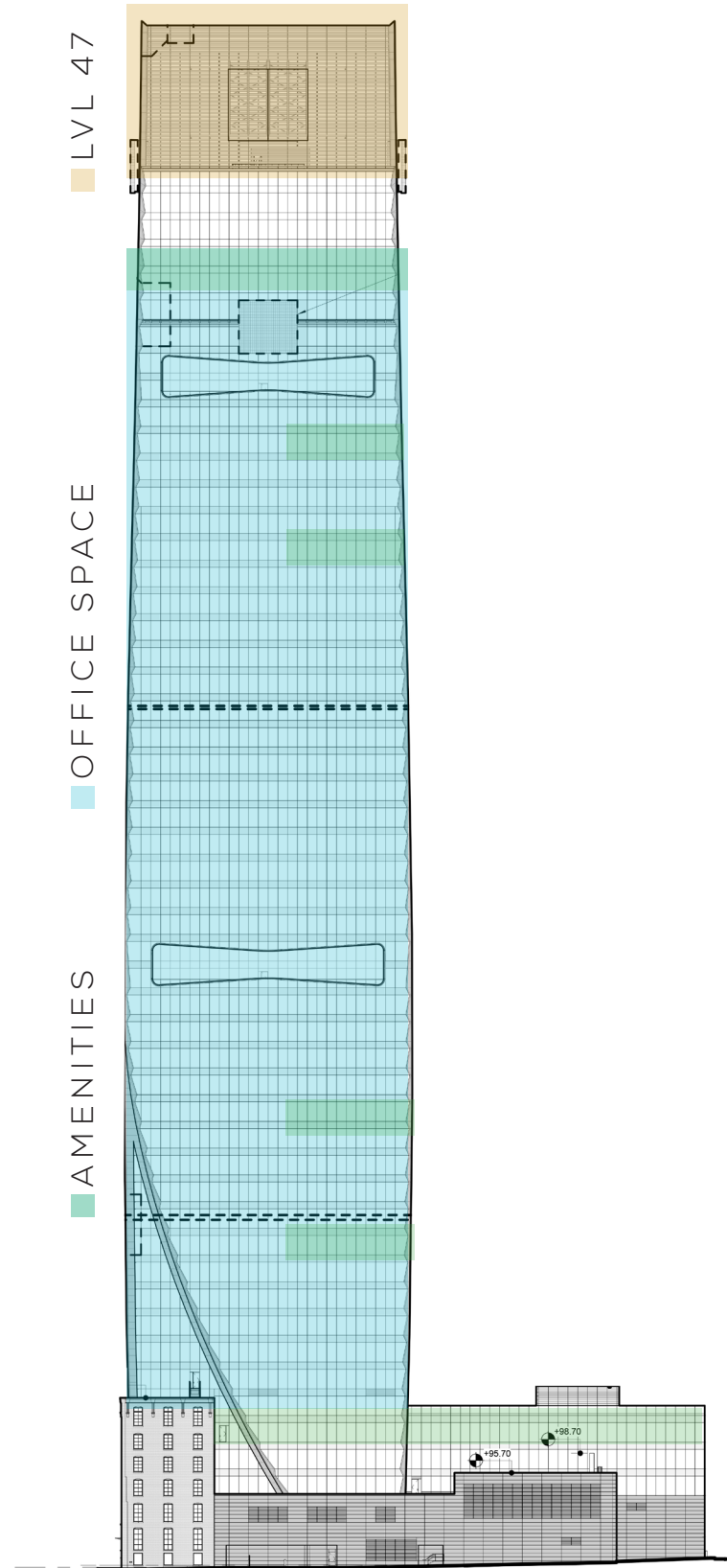
STUDIO
MUNGE



160 FRONT STREET WEST IS A COMMERCIAL TOWER ON A STREET-RELATED BASE, WHICH INCLUDES THE RETENTION OF THE FAÇADE OF A HERITAGE BUILDING. THE 46-STOUREY DEVELOPMENT WILL HAVE AN OVERALL BUILDING HEIGHT OF 240 METRES AND CONTAIN 134,766 SQUARE METRES OF COMMERCIAL GROSS FLOOR AREA, INCLUDING AT-GRADE RETAIL SPACE ALONG SIMCOE STREET AND AN OVERALL DENSITY OF 21.7 TIMES THE LOT AREA.

THE TOWER IS THE NEWEST ADDITION TO THE TD DOWNTOWN CAMPUS. IT'S CERTIFIED BY LEED (GREEN BUILDING) AND WELL (HUMAN HEALTH & WELLBEING). IT'S LOCATED AT 160 FRONT ST. W. TORONTO







TOUCHDOWN SPACE



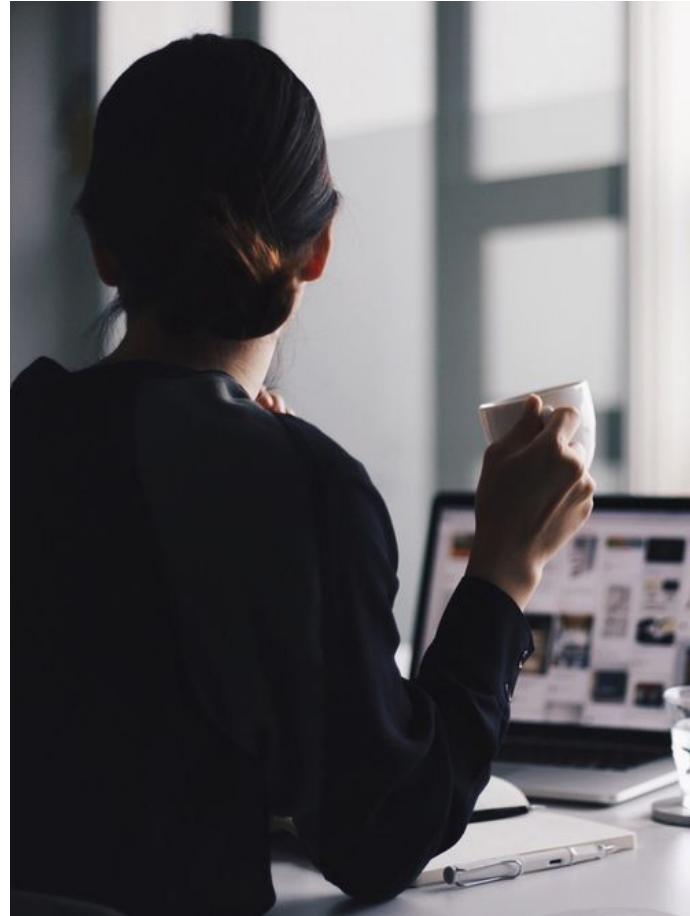
DINING SPACE



STAGE & LECTURE



SEMINAR



CONFIDENT



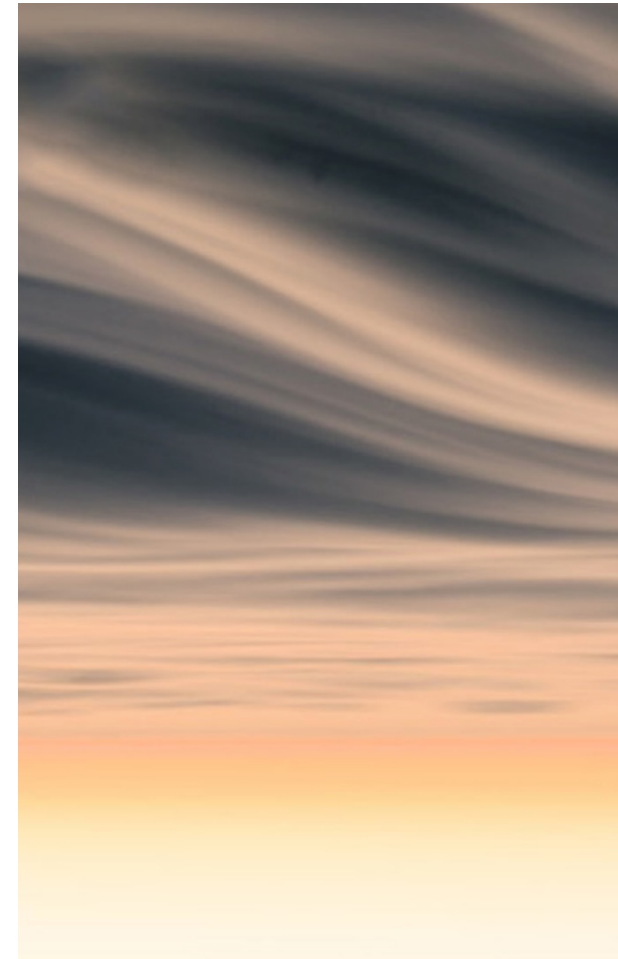
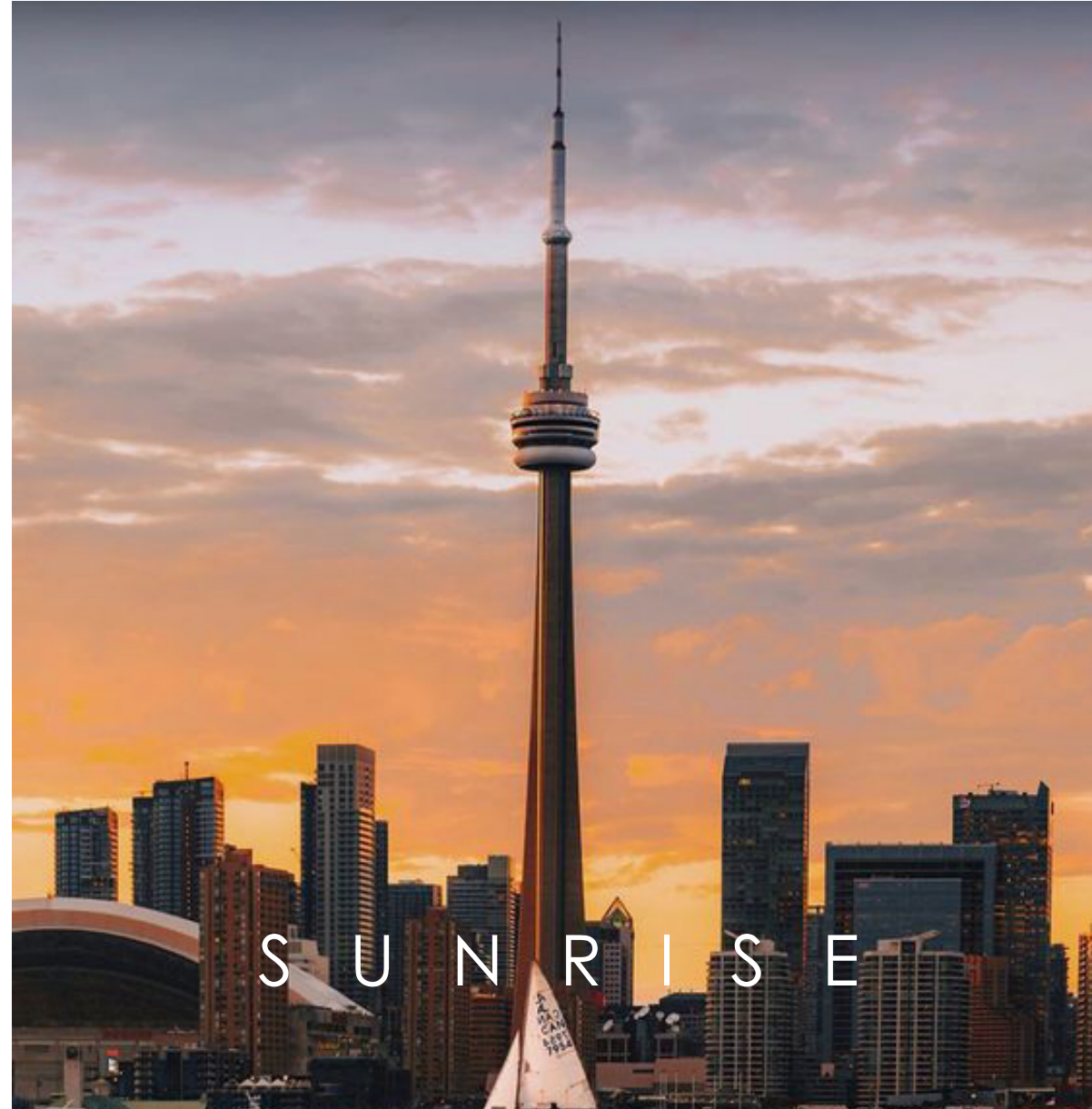
LOOKING FORWARD



COLLABORATIVE



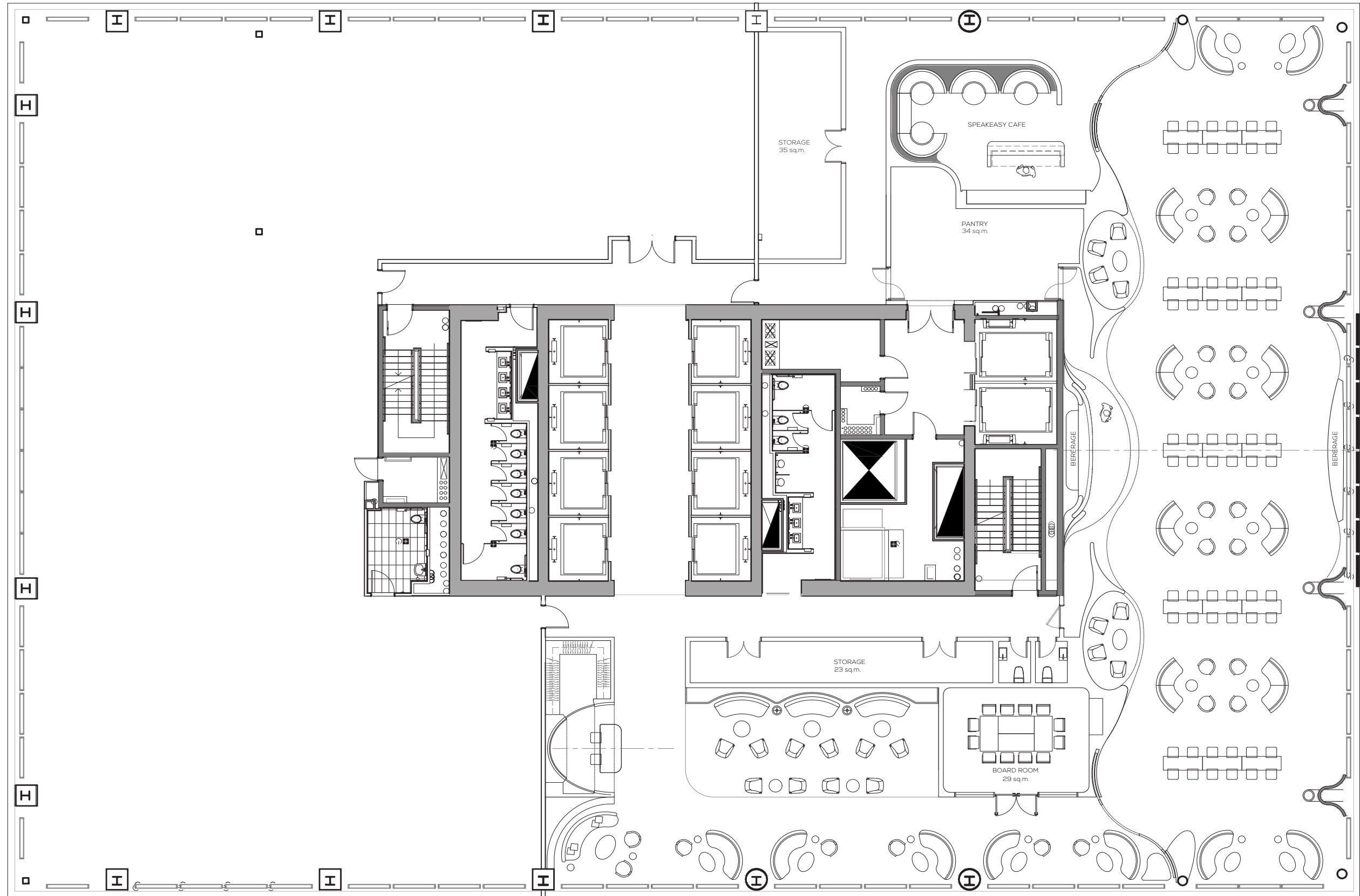
AMBITIOUS



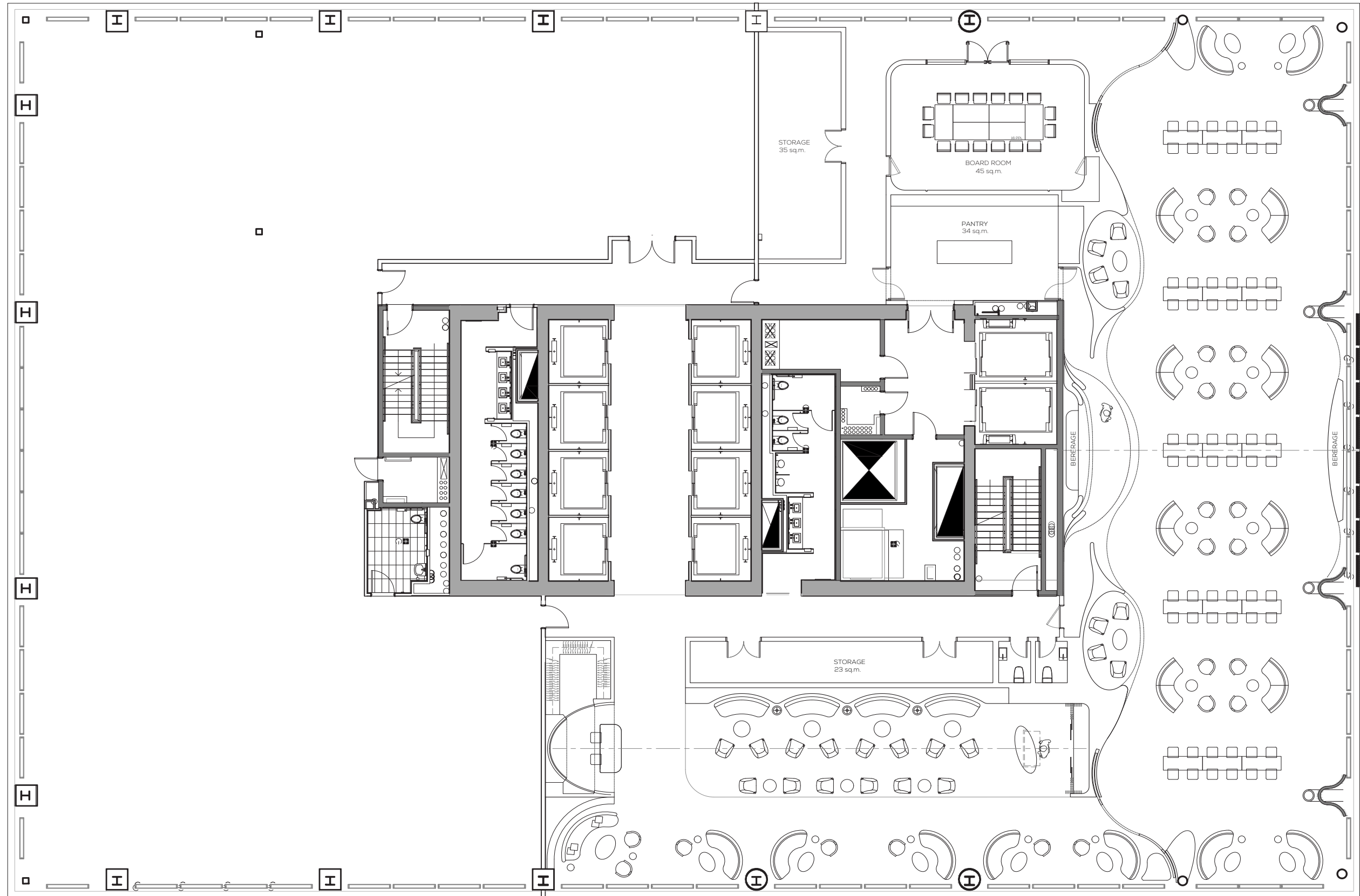
AMBITION

A SENSE OF DISCOVERY

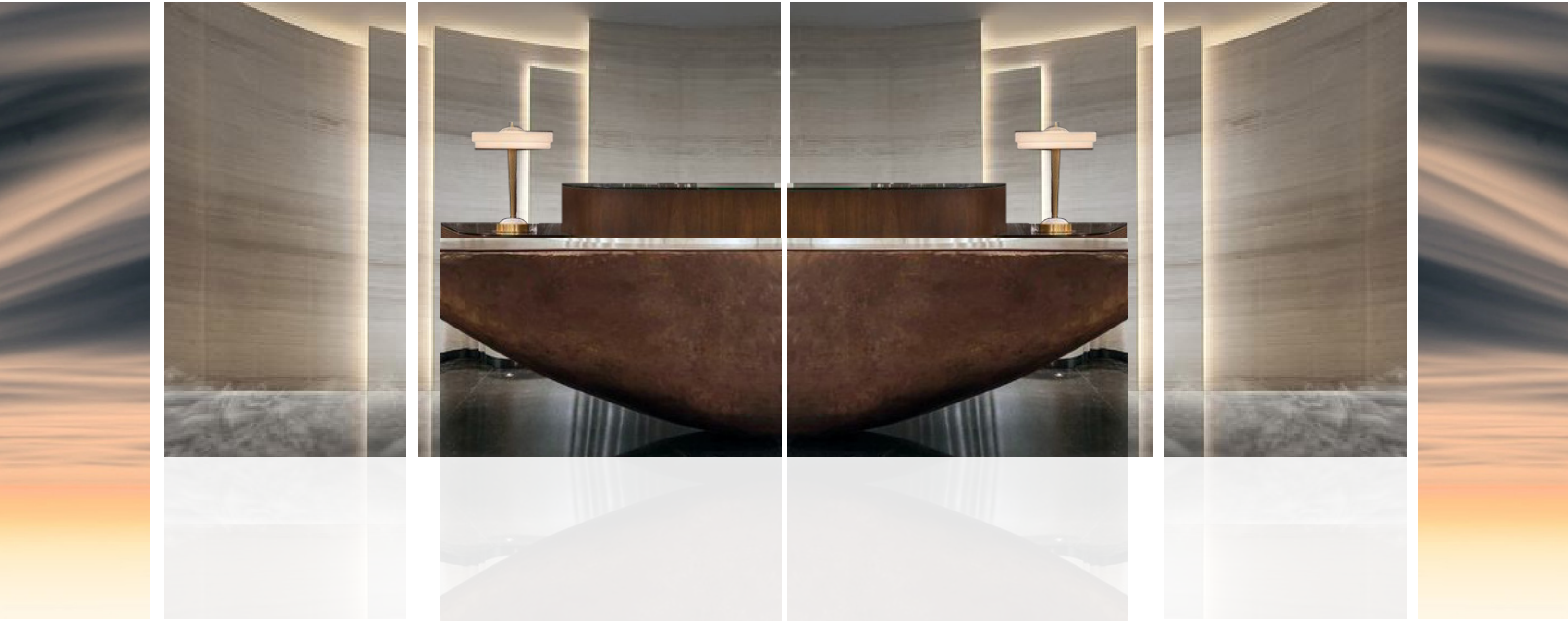
OPPORTUNITY



OPTION I

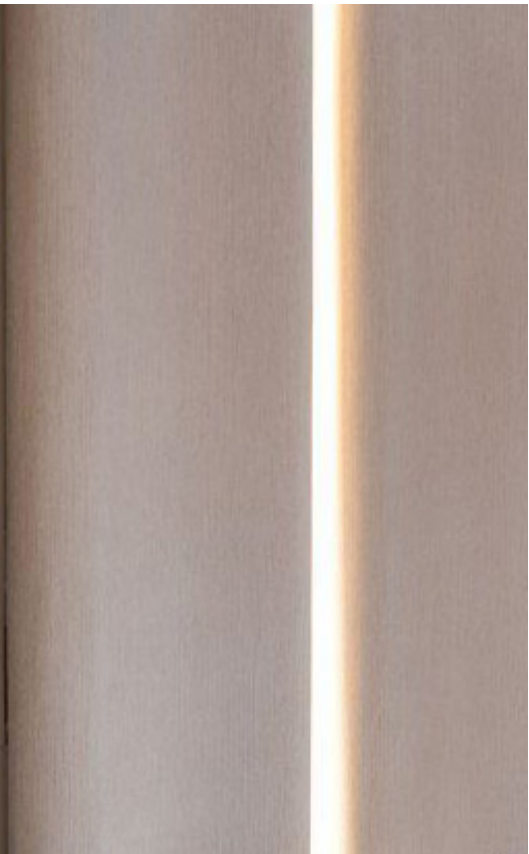
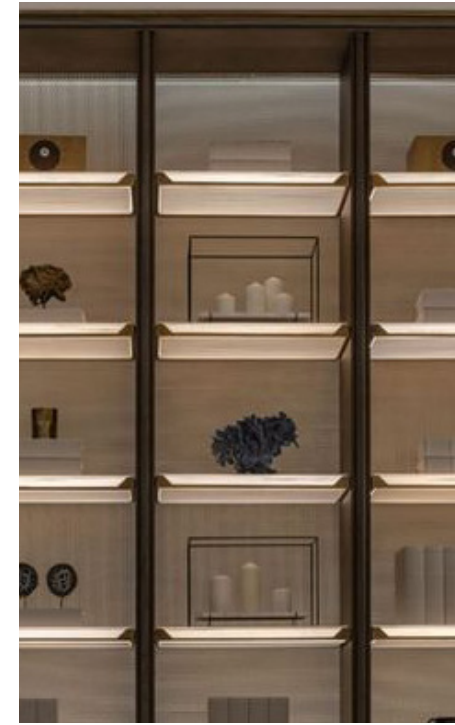
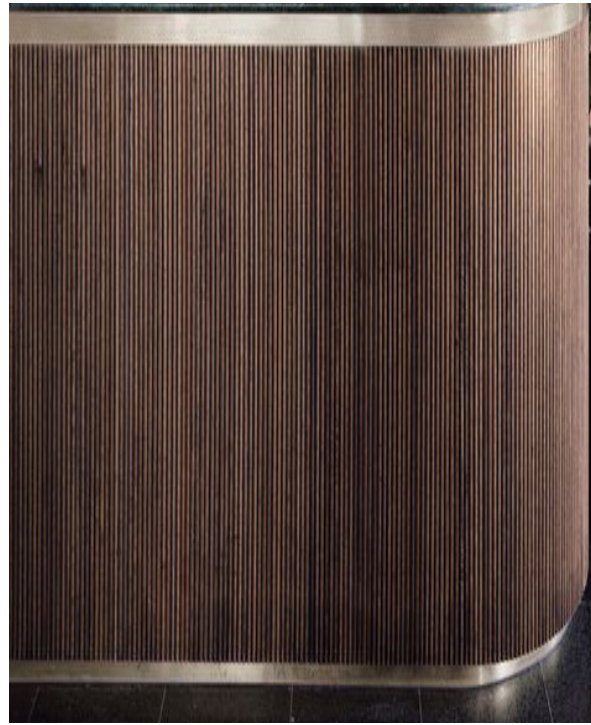
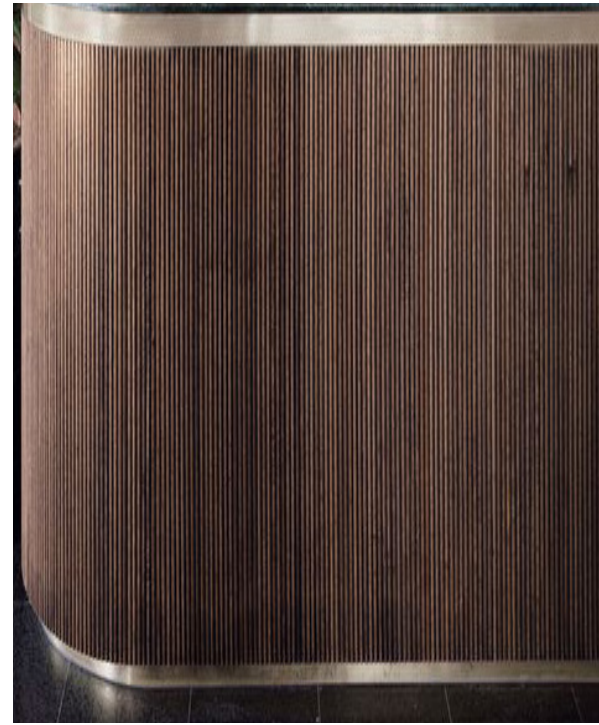


OPTION II



PEACEFUL

CALM



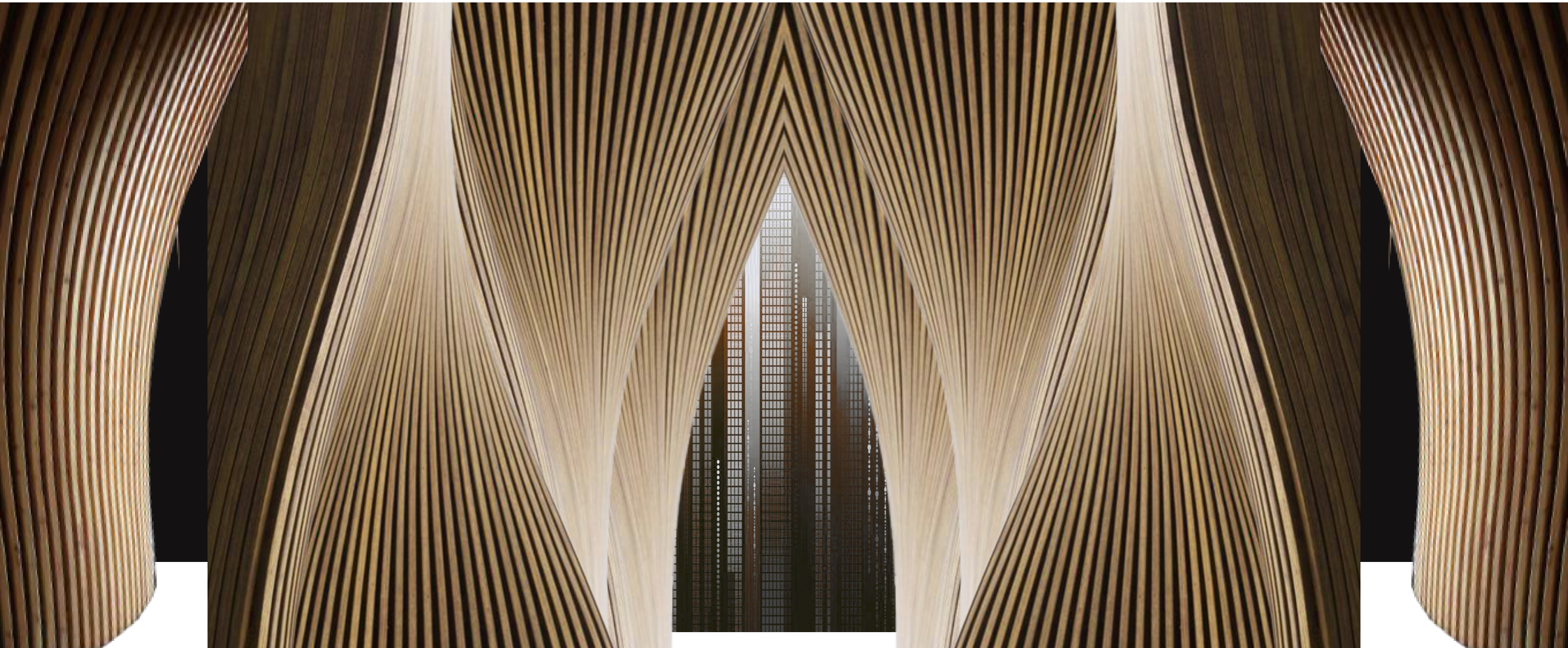
WARM-TONED

COMFORTING



AIRY

RESIDENTIAL



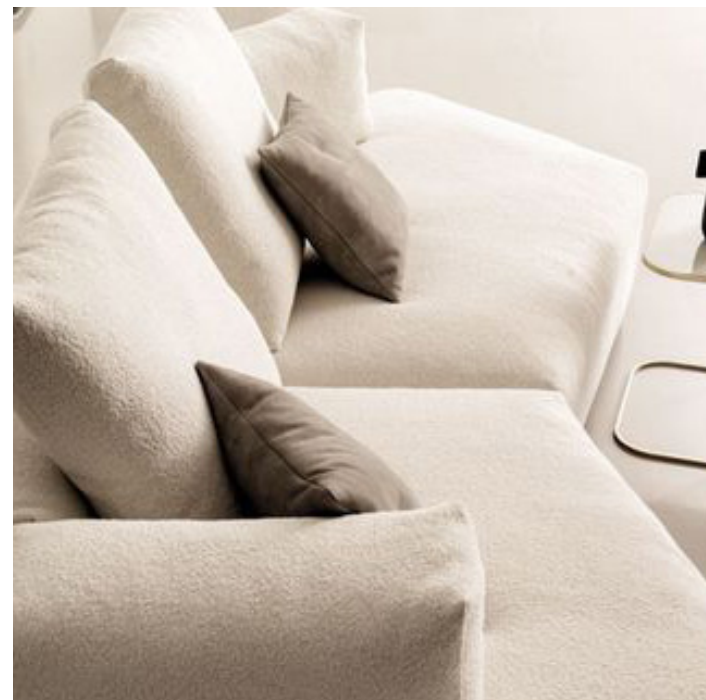
CASCADING

WARM

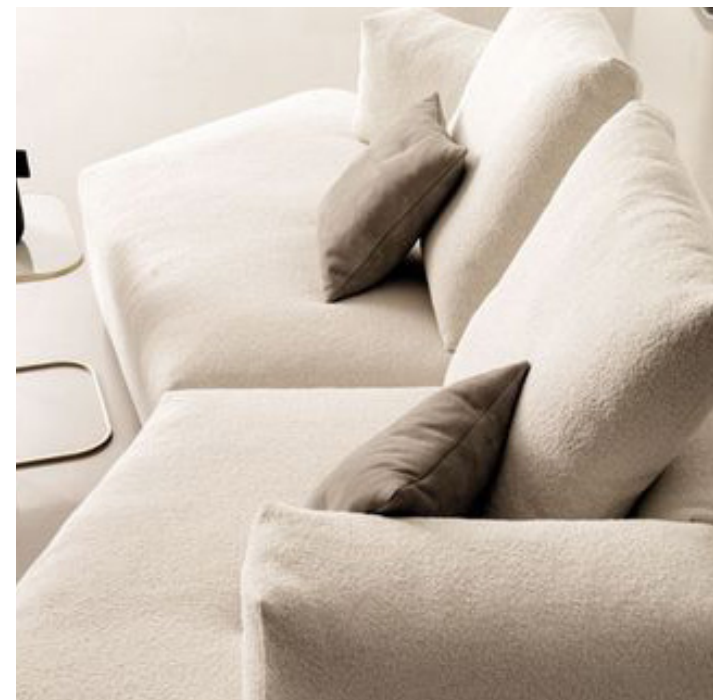


SOFT

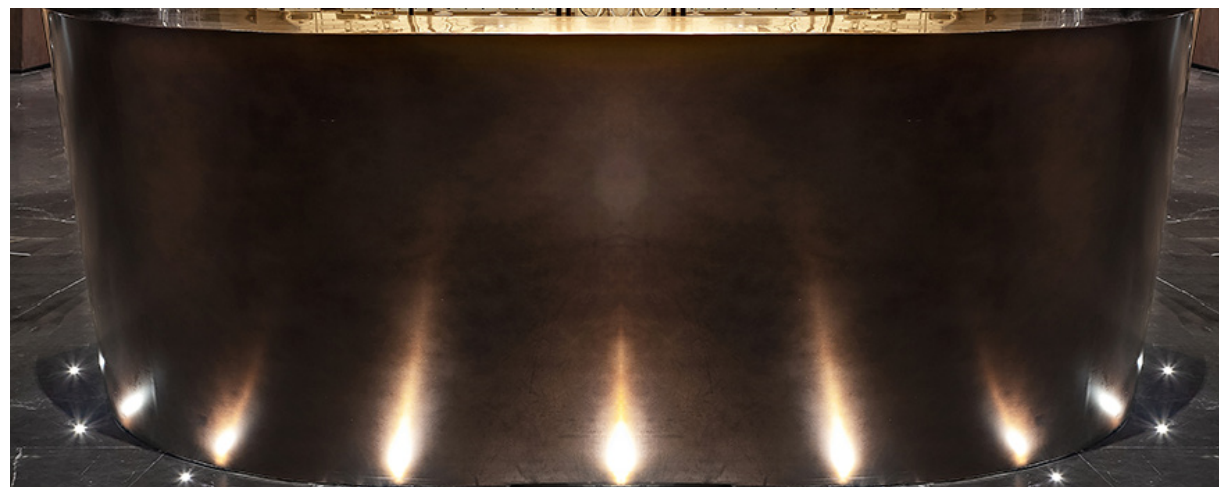
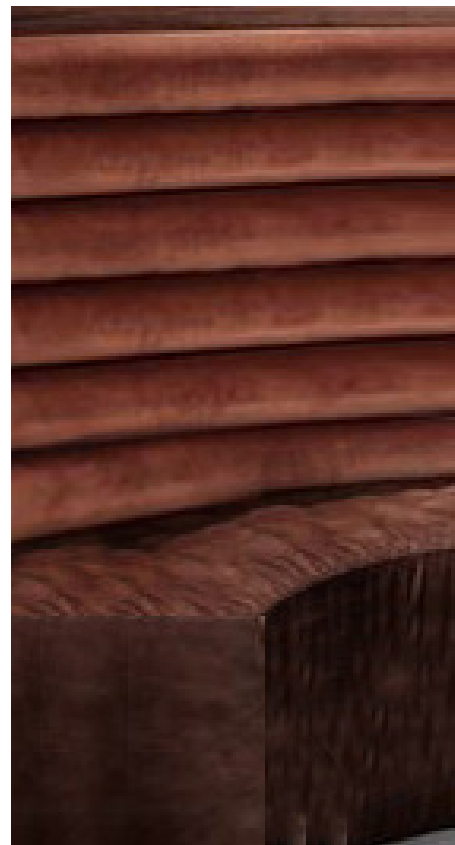
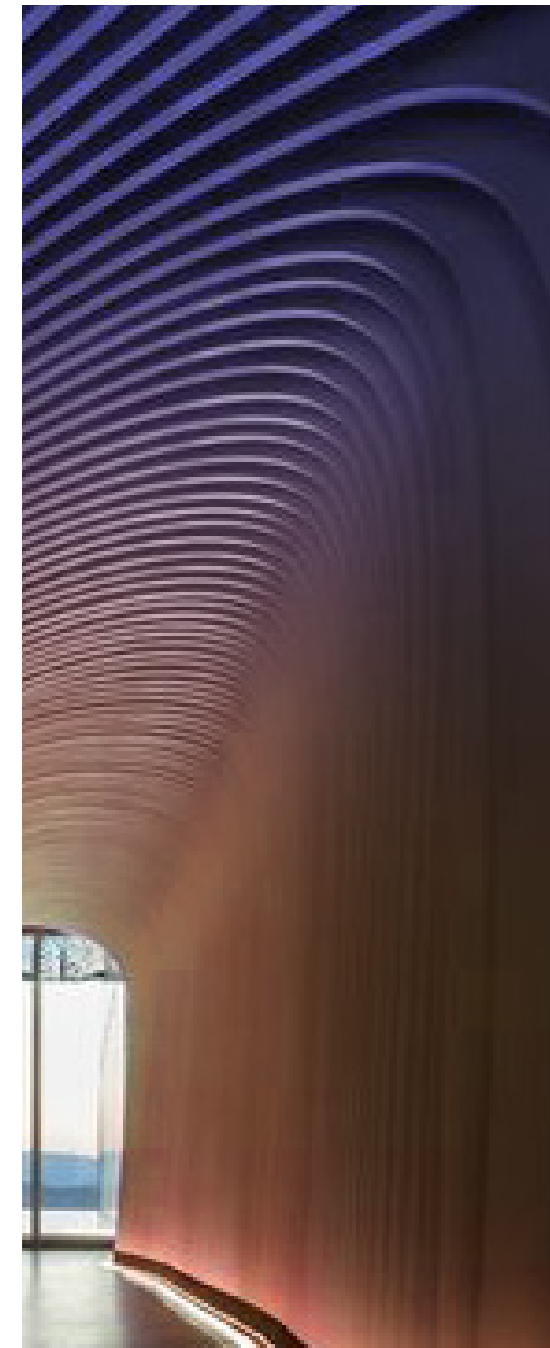
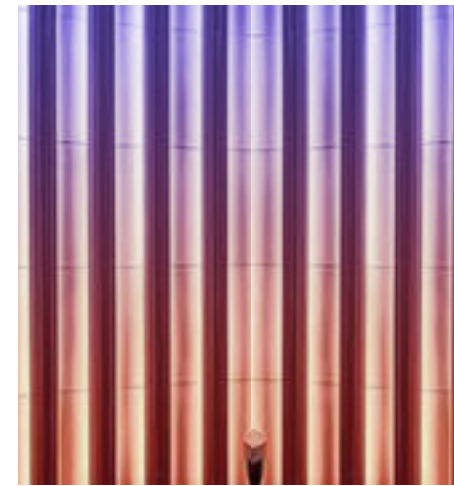
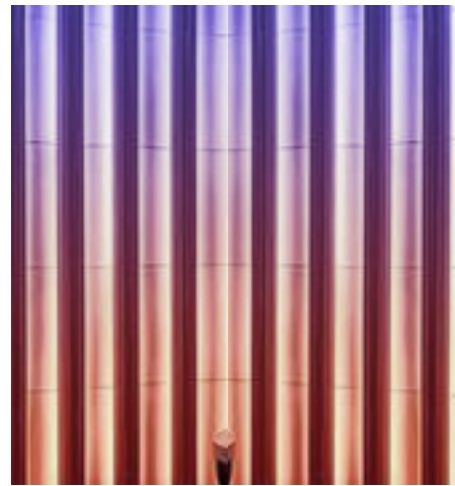
FLEXIBLE



SOFT



FLEXIBLE

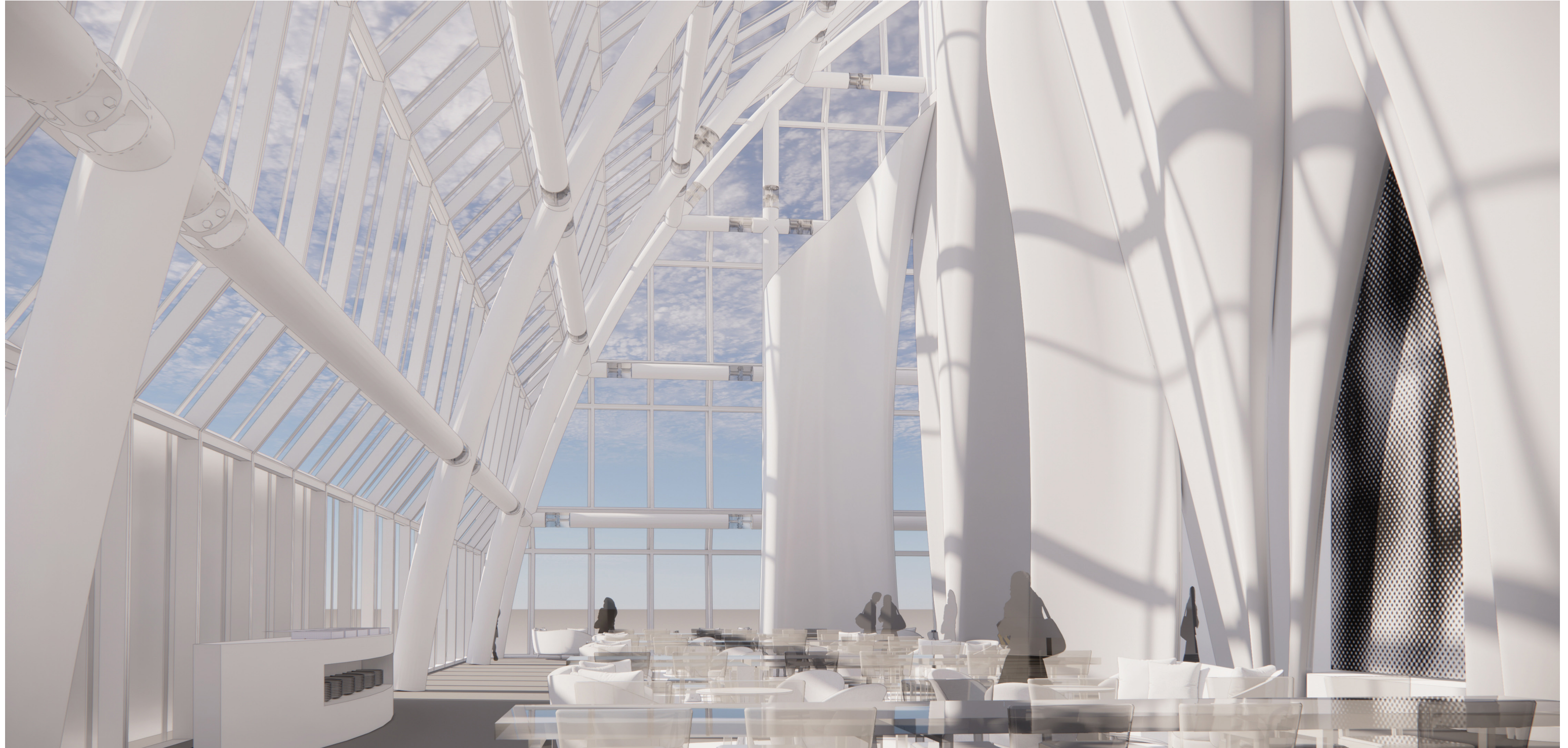


VIVID

TRANQUIL













THANK YOU