

SPEAKEASY BELLAGIO

100% SCHEMATIC DESIGN PRESENTATION | APRIL 6TH, 2022

STUDIO
MUNGE

DEFINING THE SPEAKEASY

DEFINING THE SPEAKEASY *PRINCIPLES*

-OF PAST-



HIDDEN DOOR



BAR



RELAXED SEATING/ BOOTH

DEFINING THE **CURRENT** SPEAKEASY

-INTERPRETED & CONTRIVED-



BARBERSHOP CUTS & COCKTAILS
THE COSMOPOLITAN



THE LAUNDRY ROOM
FREMONT EAST



THE PARLOR ROOM
PARK MGM



(MOST VISITED VEGAS SPEAKEASY)

DEFINING THE SPEAKEASY
BELLAGIO

...FOR GUESTS WHO ARE LOOKING FOR
EXCLUSIVITY AND MYSTERY

...FOR GUESTS WHO ARE LOOKING TO BET ON THE
UNEXPECTED

GUEST PROFILE
WHO WILL VISIT?

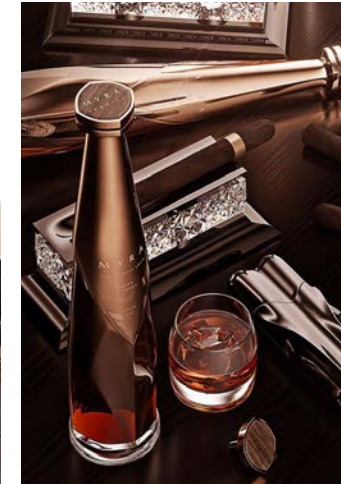
RISK TAKERS



THE EXTRAVAGANT



EXPERIENCE ENTHUSIAST



GAMBLERS

*DEFINE THE FUTURE BY
REIMAGINING THE CURRENT*



THE FUNDAMENTAL



THE REIMAGINED

THE JOURNEY

THE JOURNEY | “THE CURATED VAULT” NARRATIVE

THE MACALLAN LALIQUE
AGED 72 YEAR



TOBEY MAGUIRE



MATT DAMON



JENNIFER TILLY



TEQUILA LEY DIAMANTE

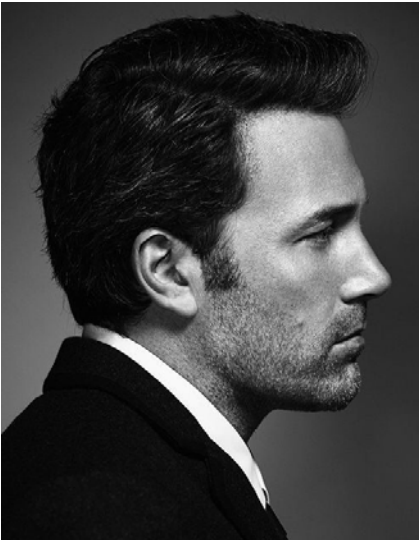


DALMORE CANDELA
AGED 50 YEARS

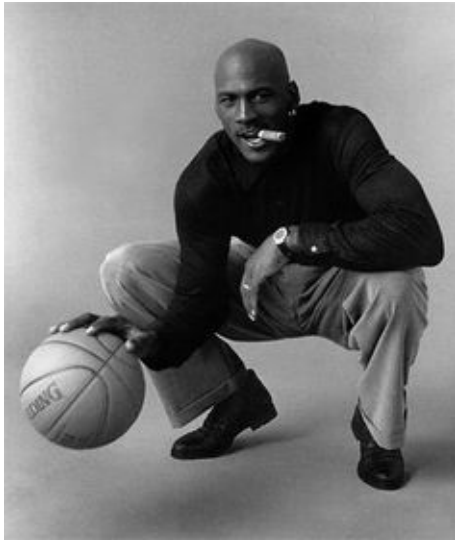
PARIS HILTON



BEN AFFLECK

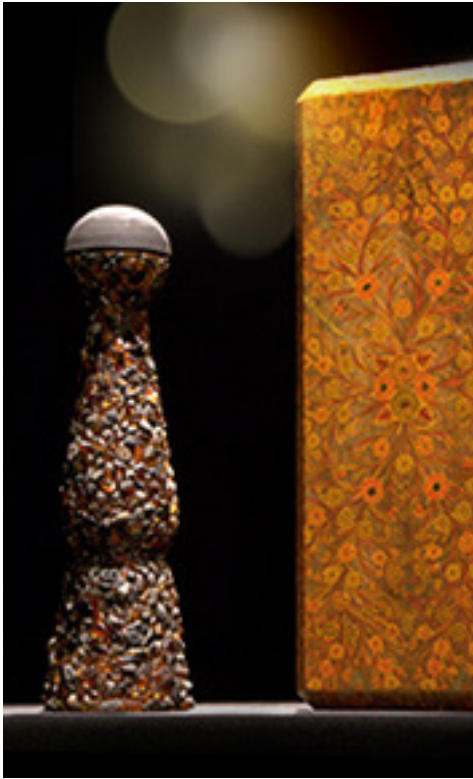


MICHAEL JORDAN



CELEBRITY TOP GAMBLERS

CLASE AZUL 15TH
ANNIVERSARY EDITION



THE JOURNEY | "THE CURATED VAULT" DESIGN ELEMENTS



DISCOVERY

SCULPTURAL

UNDERSTATED LUXURY



BACCARAT



LALIQUE



TO EXPERIENCE A CRYSTAL GLASS IN A CRYSTAL ROOM...



THE JOURNEY | “CRYSTAL ROOM” DESIGN ELEMENTS



FACETED & REFLECTIVE

CRYSTAL ROOM

LAYERED MATERIALITY





ORGANIC FORMS

RELAXED & TAILORED COMFORT



THE JOURNEY | WASHROOM DESIGN ELEMENTS



REFLECTIVE



TEXTURED

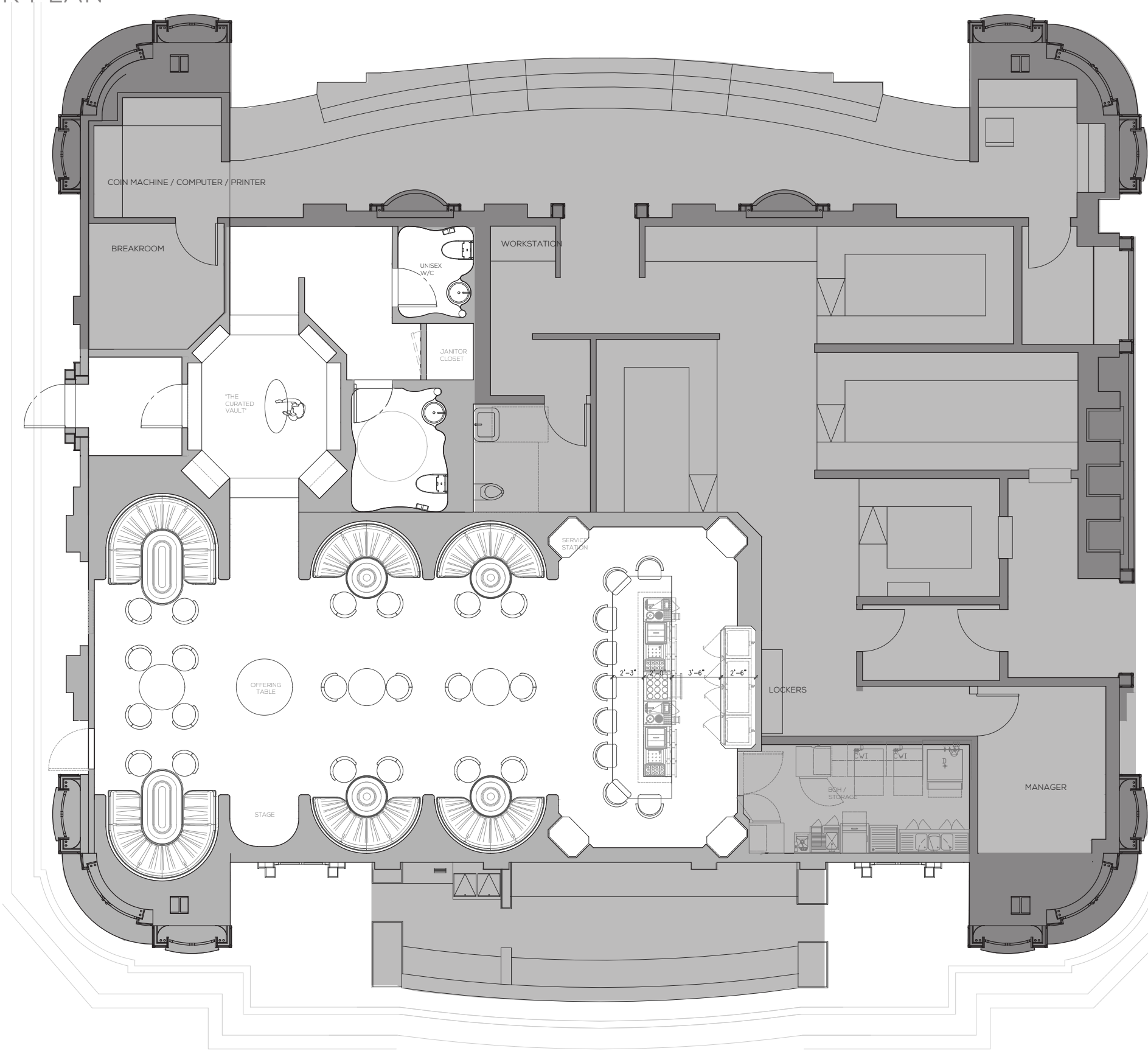


CAPTIVATING & IMMERSIVE



WARM METALS

THE JOURNEY | FLOOR PLAN



BOOTH / TABLES : 44
BAR : 9
TOTAL SEAT COUNT : 53

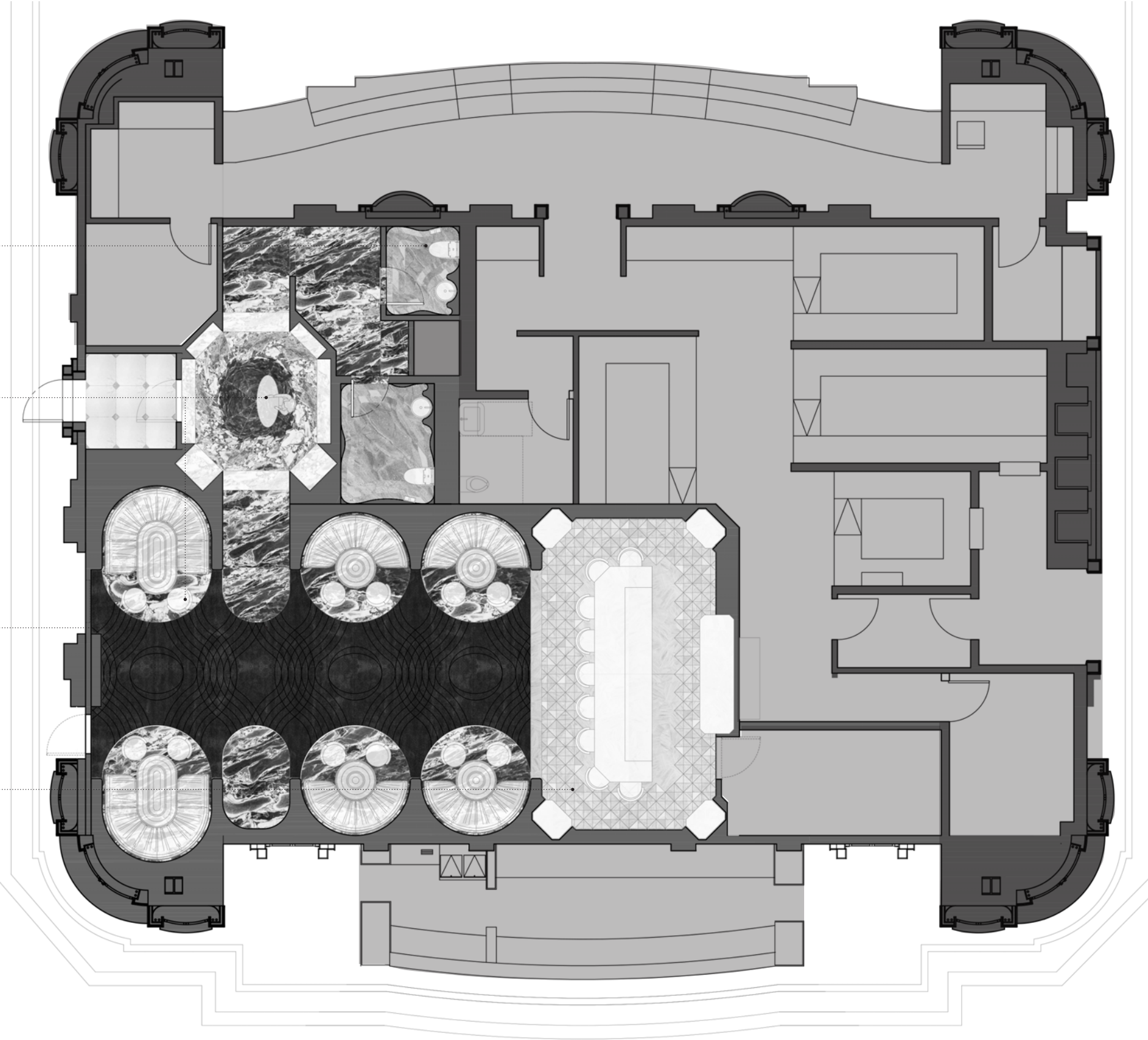


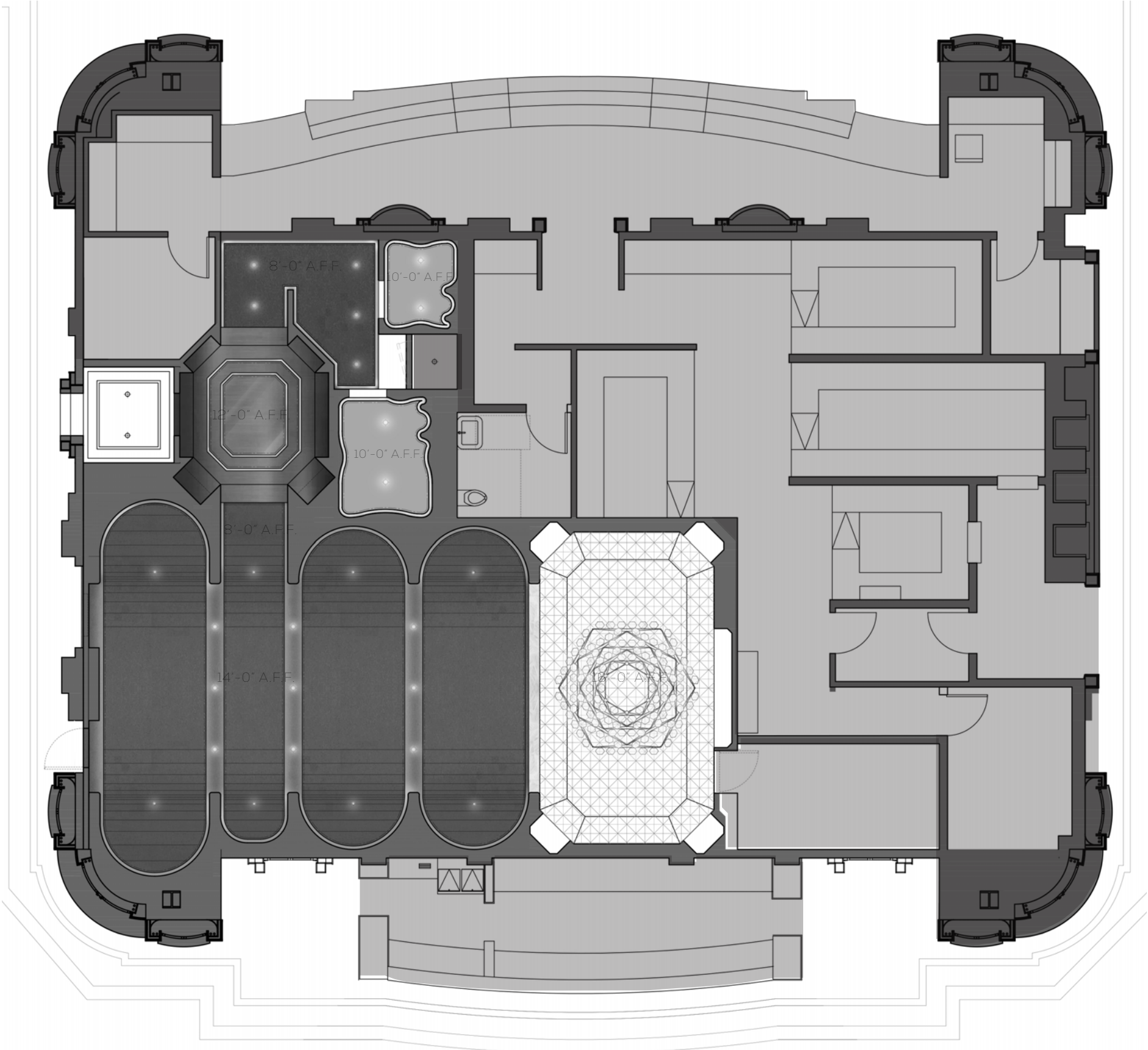
STONE FLOORING
@ WASHROOM

STONE FLOORING
@ CURATED VAULT

CUSTOM CARPET

STONE PATTERN
@ CRYSTAL BAR





ONXY (OPTION 1)









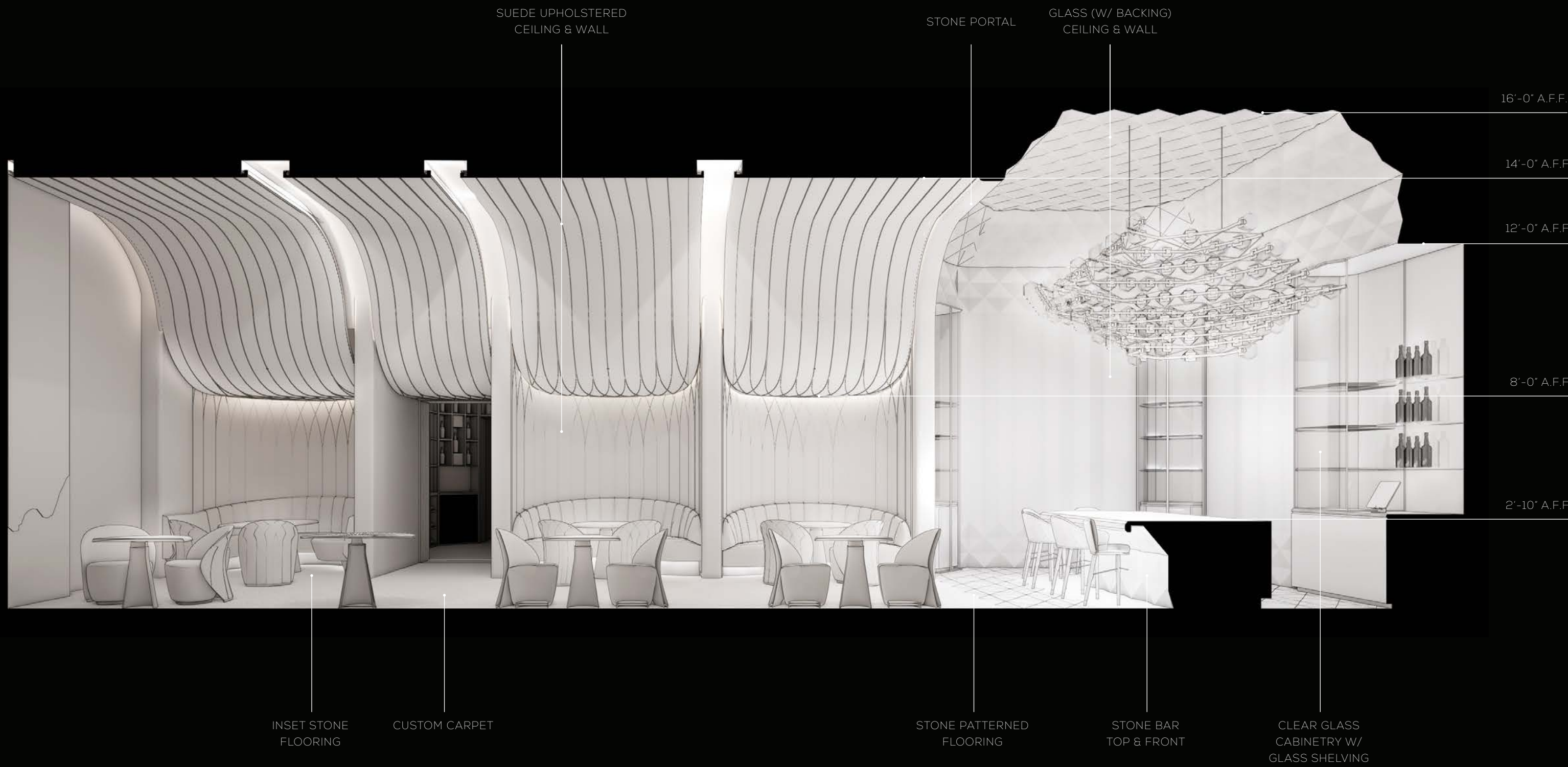












SUEDE UPHOLSTERED
CEILING & WALL

STONE PORTAL

GLASS (W/ BACKING)
CEILING & WALL

16'-0" A.F.F.

14'-0" A.F.F.

12'-0" A.F.F.

8'-0" A.F.F.

2'-10" A.F.F.

INSET STONE
FLOORING

CUSTOM CARPET

STONE PATTERNED
FLOORING

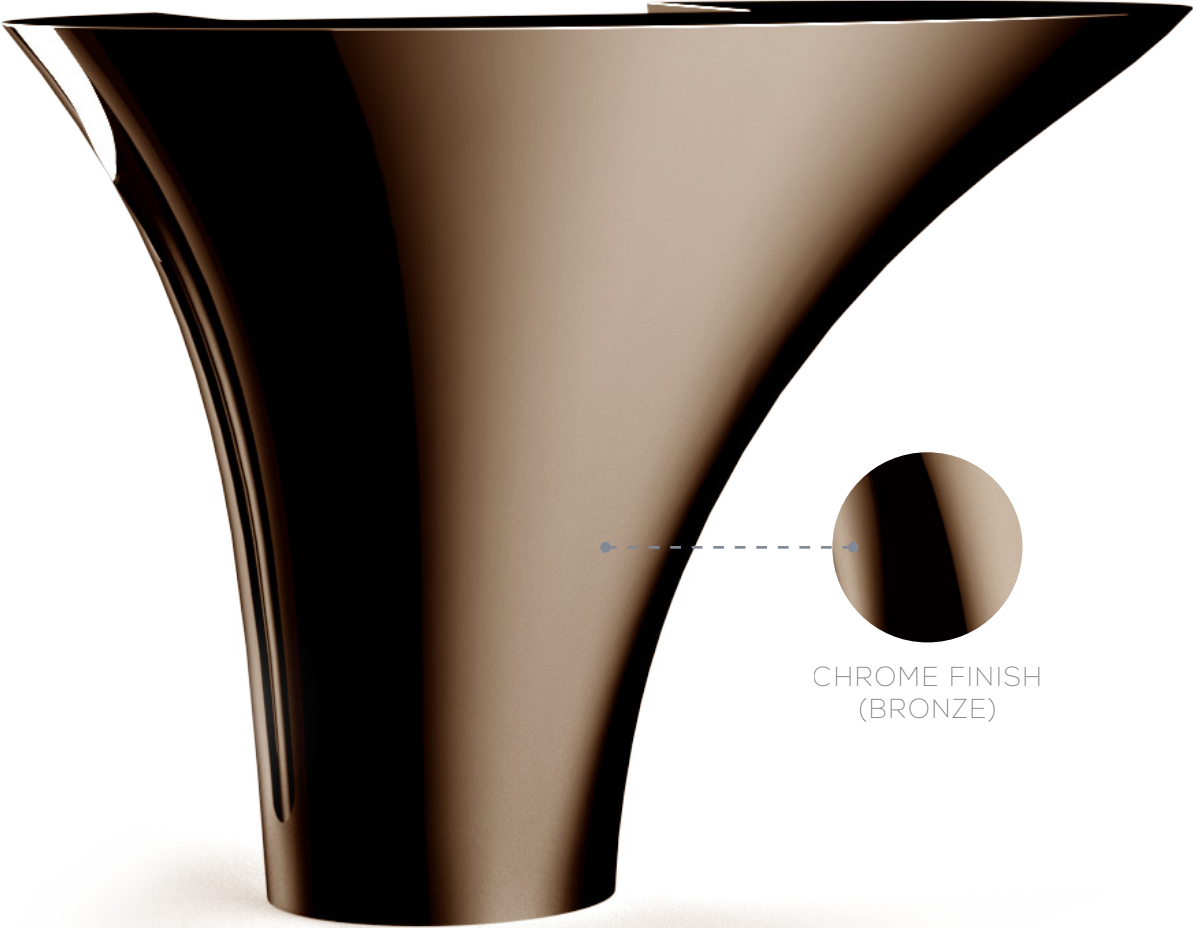
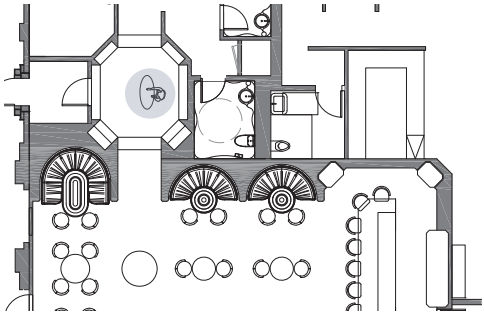
STONE BAR
TOP & FRONT

CLEAR GLASS
CABINETRY W/
GLASS SHELVING

THE JOURNEY | MATERIAL PALETTE



BLACK SCHEME

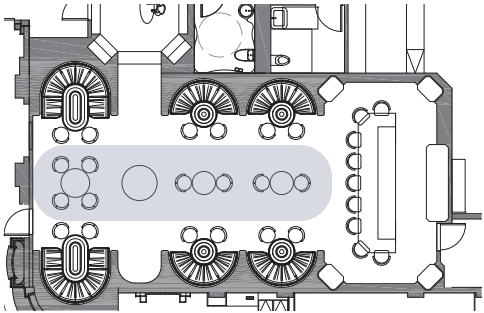


CHROME FINISH
(BRONZE)

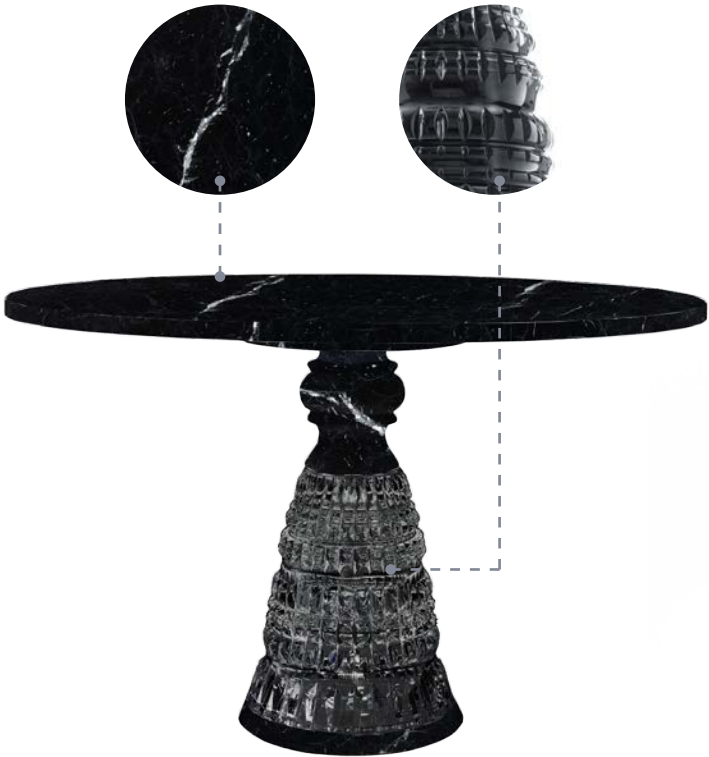


FF&E
BLACK SCHEME
HOST DESK



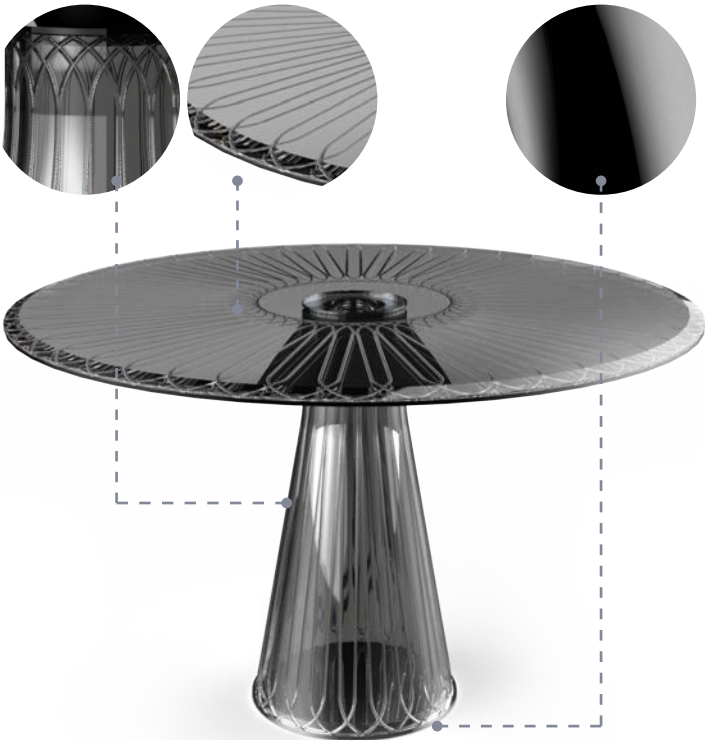


MARBLE
(BLACK MARQUINA) BLACK CRYSTAL



OFFERING TABLE
BACCARAT NEW ANTIQUE TABLE BY
MARCEL WANDERS
OPTION 2

GEOMETRIC
ETCHED GLASS CHROME FINISH
(BLACK)



OFFERING TABLE
STUDIO MUNGE
OPTION 1

MARBLE
(PORTORO) CHROME FINISH
(BLACK)



DINING CHAIR
STUDIO MUNGE

DINING TABLE
AGRA BY BRABBU

DINING CHAIR
STUDIO MUNGE

FF&E
BLACK SCHEME
LOUNGE FURNITURE



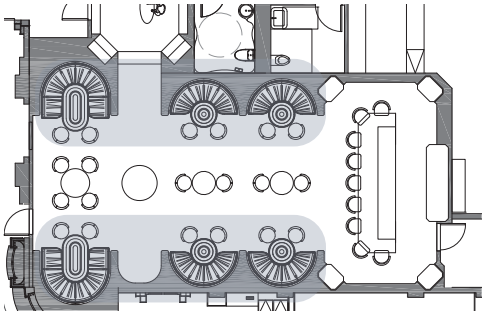


TABLE LAMP
BELLA PLISSE BY MW
(SUGGESTED BY CLIENT- FUNCTION TO BE
CUSTOMIZED FOR PROJECT)



TABLE LAMP
SPACE BY KARTELL
OPTION 2



BANQUETTE

DINING TABLE
AGRA BY BRABBU



DINING CHAIR
STUDIO MUNGE



DINING CHAIR
STUDIO MUNGE



DINING TABLE
AGRA BY BRABBU

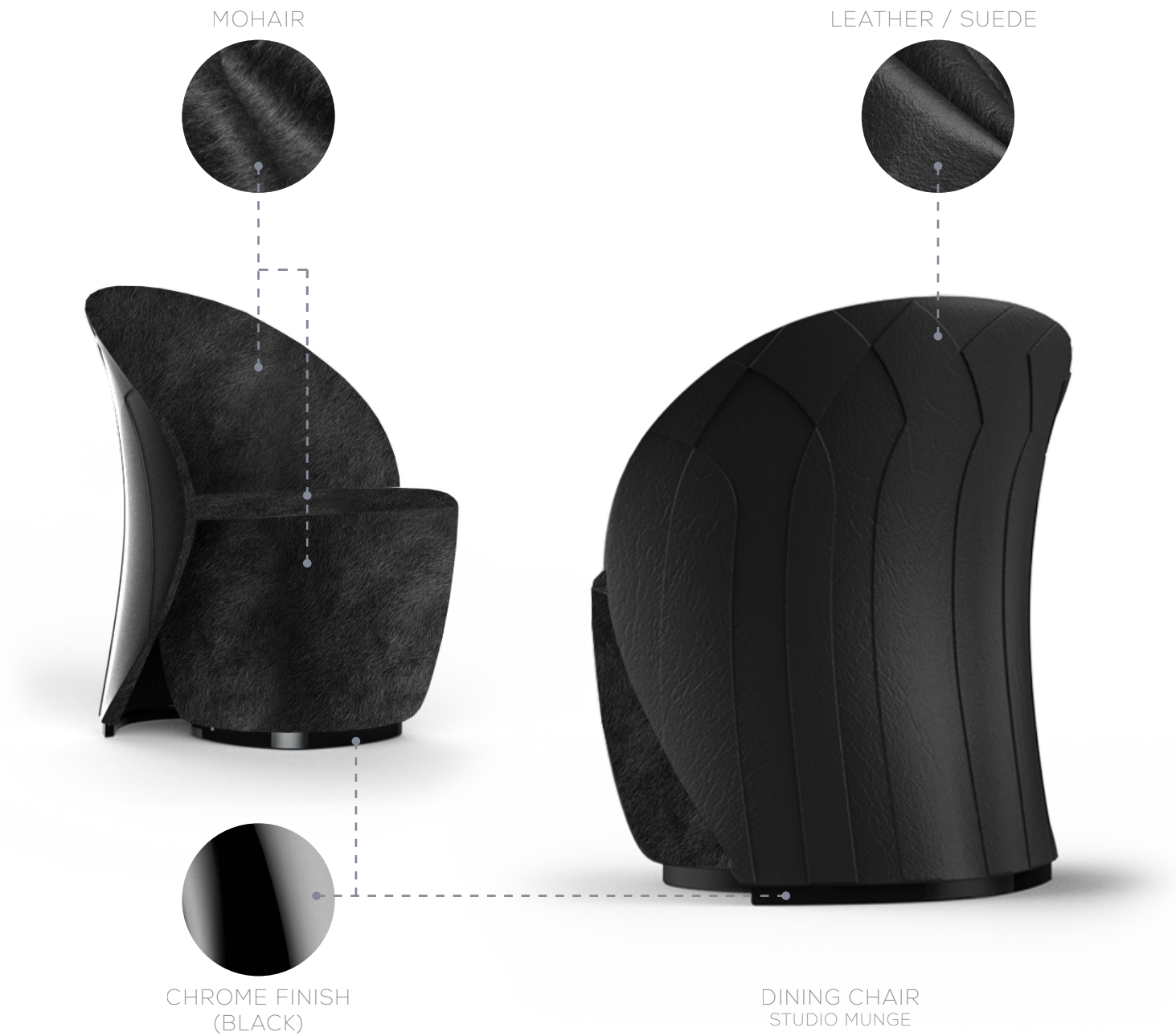
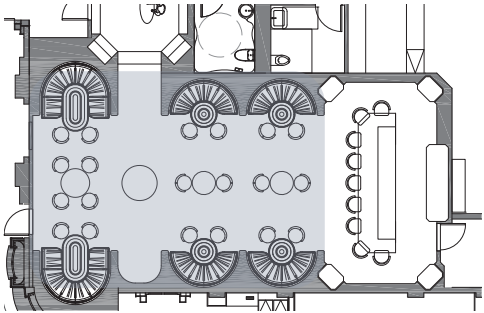


BANQUETTE



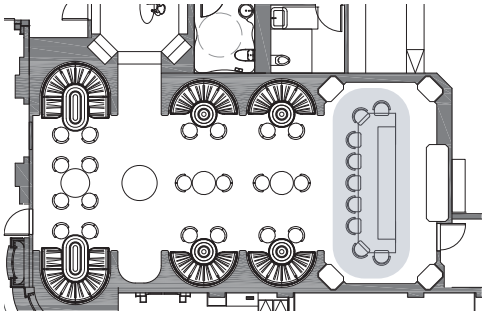
FF&E
BLACK SCHEME
LOUNGE FURNITURE





FF&E
BLACK SCHEME
LOUNGE FURNITURE





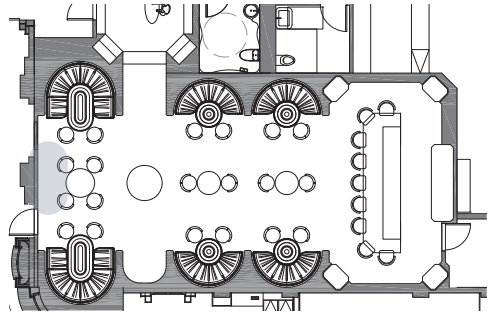
GLASS CHANDELIER
STUDIO MUNGE DESIGN
CUSTOM MADE BY GABRIEL SCOTT



COUNTER STOOL
ELLIS BY MEZZO COLLECTION

FF&E
CRYSTAL ROOM FURNITURE





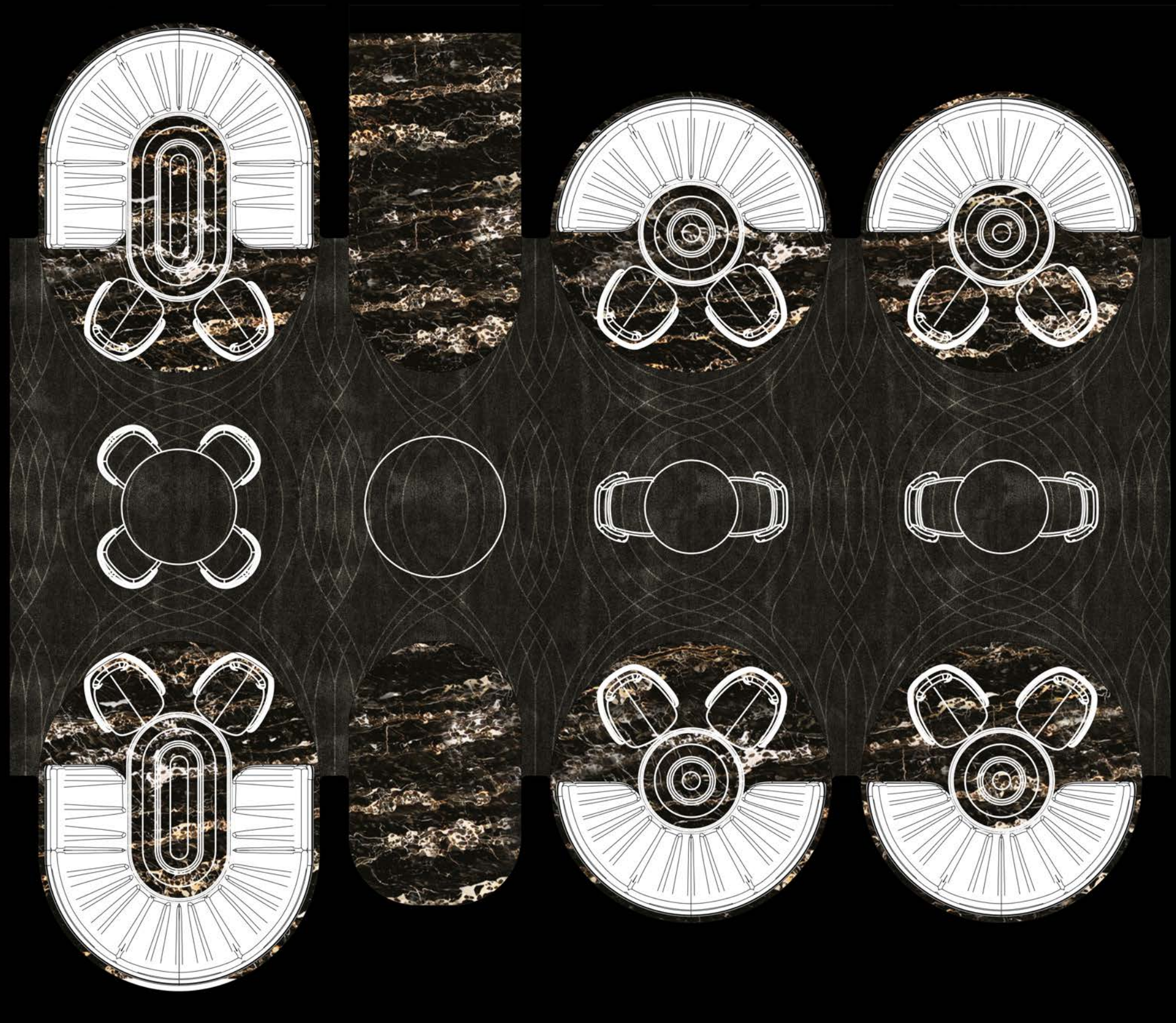
RADO KIROV

RADO KIROV IS A BULGARINA / SOUTH AFRICAN ARTIST WHOSE WORK HAS ITS FOUNDATION IN THE TRANSFORMATION OF BASE MATERIAL INTO SOMETHING MESMERISING. IT SUGGESTS SOMETHING THAT IS FOREVER MOVING AND UNSTABLE WITH A MATERIAL THAT IS HARD AND FIXED. THE VISUAL IMPACT OF SHIM-

MERING METAL ASSIMILATING AND DISTORTING ITS ENVIRONMENT
- CONSTANTLY CHANGING AS THE VIEWER MOVES THEIR VIEWPOINT
- SPEAKS OF POSSIBILITY, POTENTIAL AND CHANGE.

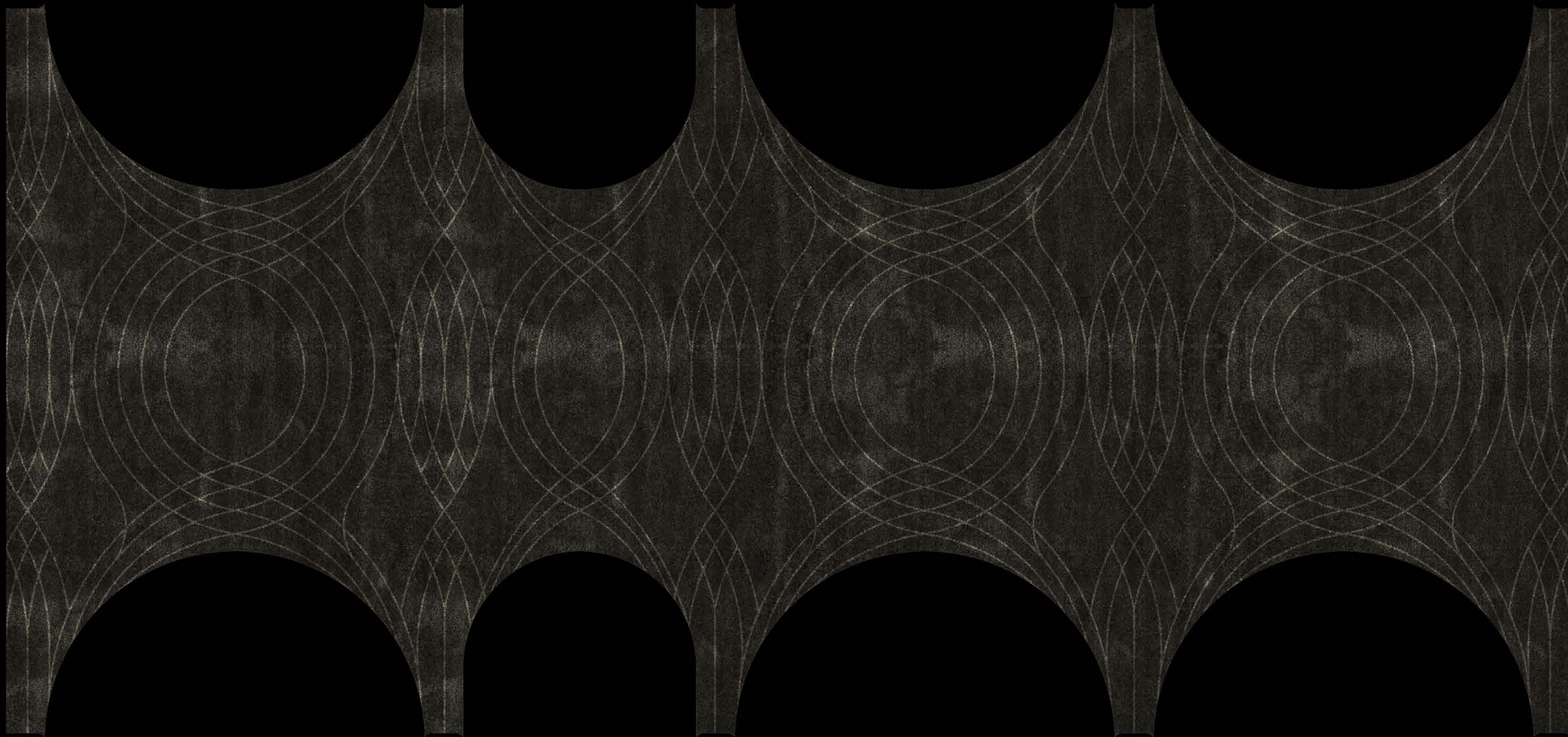
FF&E
ART DIRECTION





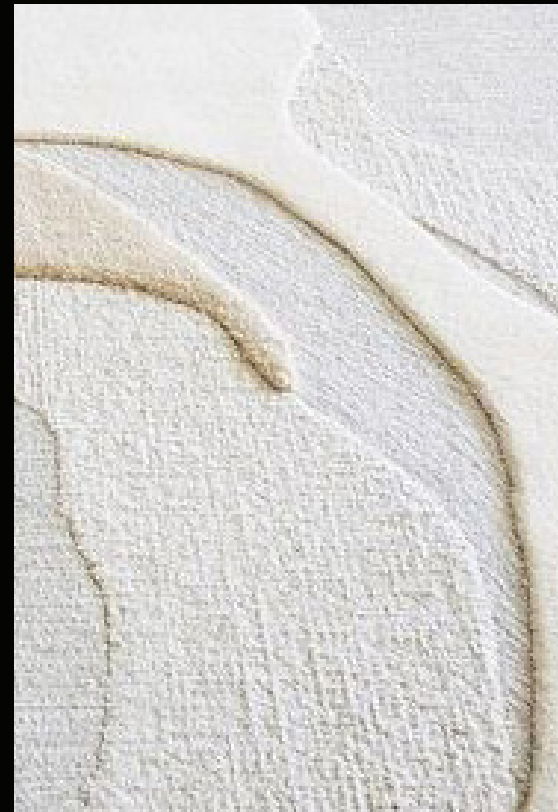
FF&E
BLACK SCHEME
CARPET DESIGN





FF&E
BLACK SCHEME
CARPET DESIGN

THE
RUG
COMPANY
H A N D M A D E



TEXTURE RICH HANDTUFTED LUXURY CUSTOM DESIGNED WOOL & SILKY
NYLON CARPET, CUT PILE TO LOOP PILE GRADIATION TECHNIQUE &
LOOPED RECESSED MOTIF

FF&E
RECOMMENDED CARPET VENDOR

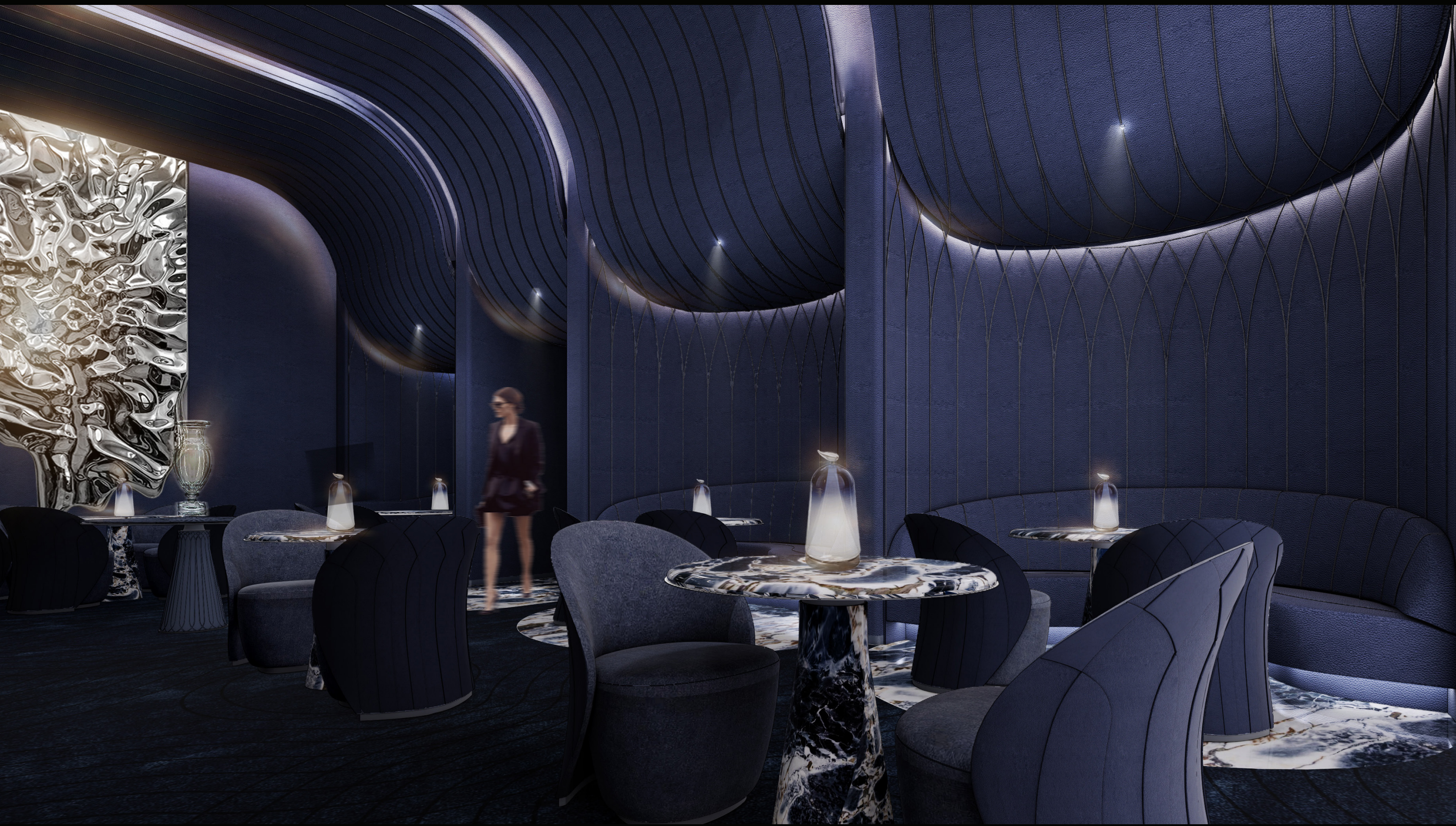
SAPPHIRE (OPTION 2)









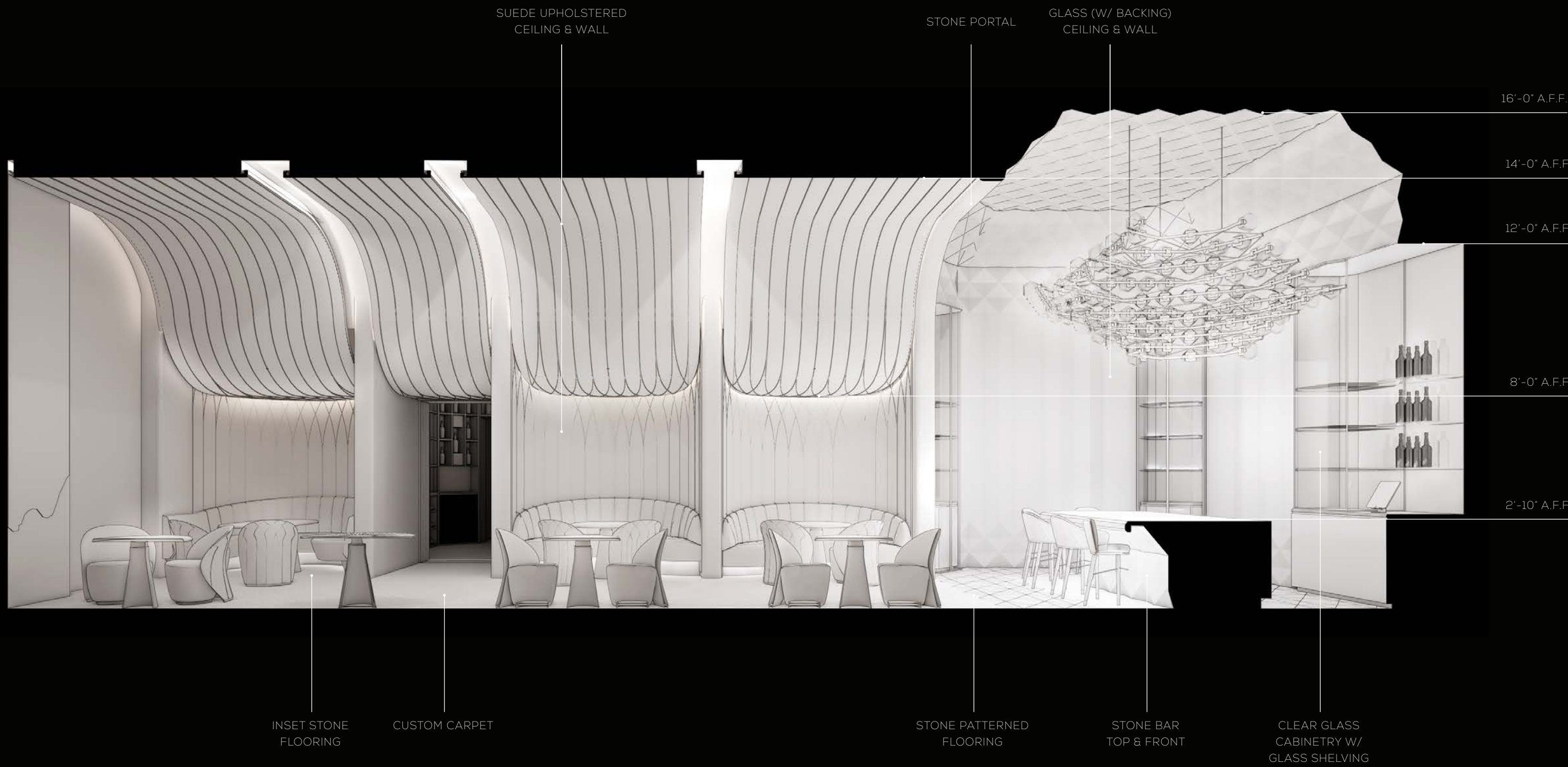












SUEDE UPHOLSTERED
CEILING & WALL

STONE PORTAL

GLASS (W/ BACKING)
CEILING & WALL

16'-0" A.F.F.

14'-0" A.F.F.

12'-0" A.F.F.

8'-0" A.F.F.

2'-10" A.F.F.

INSET STONE
FLOORING

CUSTOM CARPET

STONE PATTERNED
FLOORING

STONE BAR
TOP & FRONT

CLEAR GLASS
CABINETRY W/
GLASS SHELVING

THE JOURNEY | MATERIAL PALETTE

CRYSTAL ROOM
WALL + FLOOR + BAR STONE

CRYSTAL ROOM
FEATURE GLASS W/ BACKING
WALL + CEILING

CRYSTAL ROOM BAR STOOL
SEAT + BACK

CRYSTAL ROOM BAR STOOL
LEATHER WRAPPED LEGS

TYPICAL METAL
THROUGHOUT

VAULT CEILING +
SHELVING MIRROR

CLEAR FACETED
GLASS

CARPET POMS

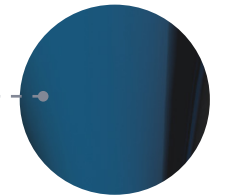
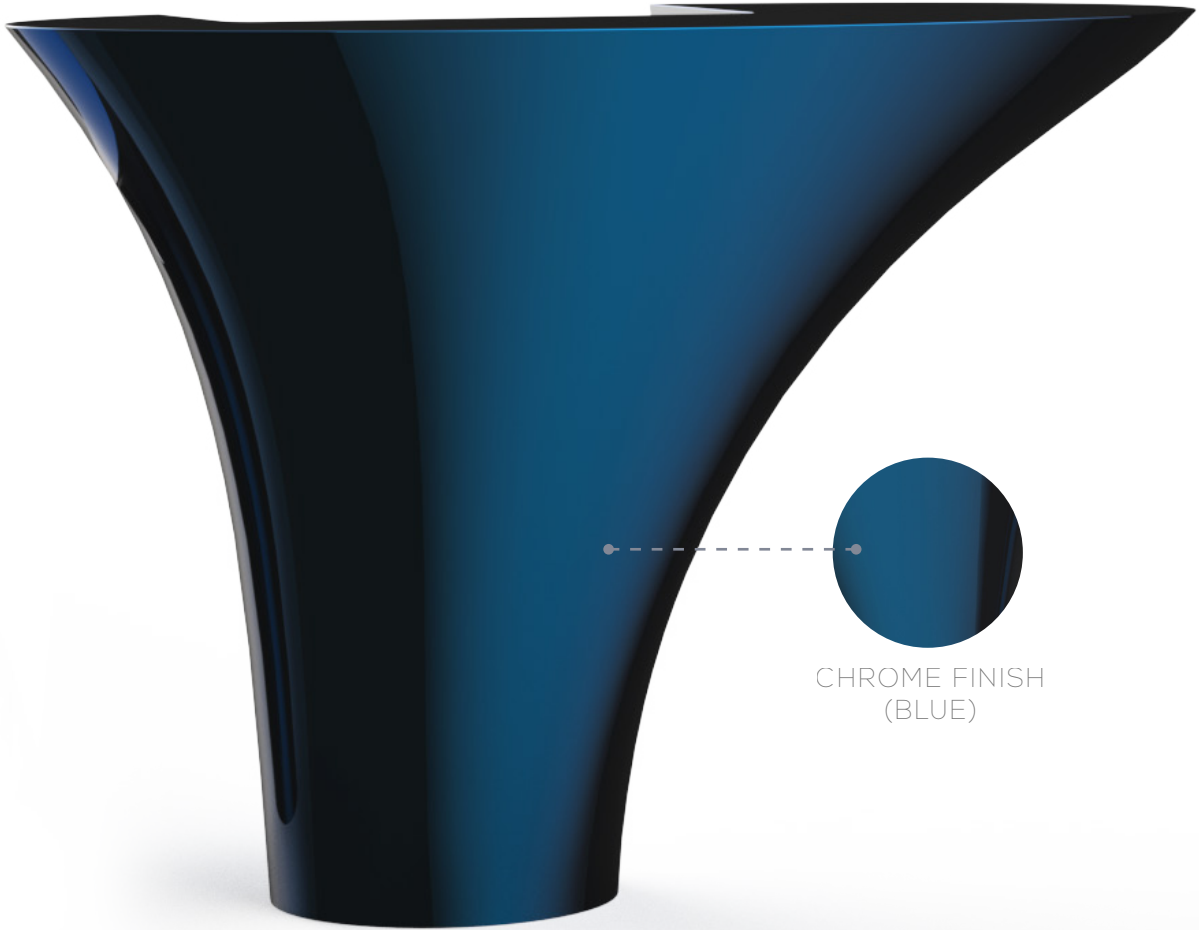
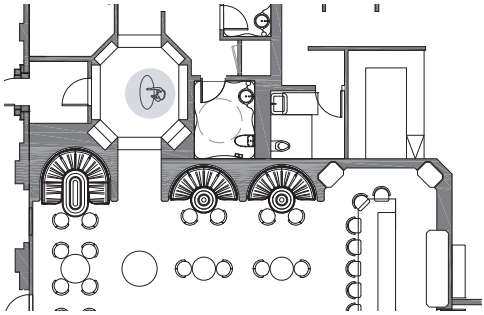
EMBLEM CHAIR
LEATHER ACCENT STITCHING

EMBLEM WALL + CEILING
+ CHAIR BACK SUEDE UPHOLSTERY

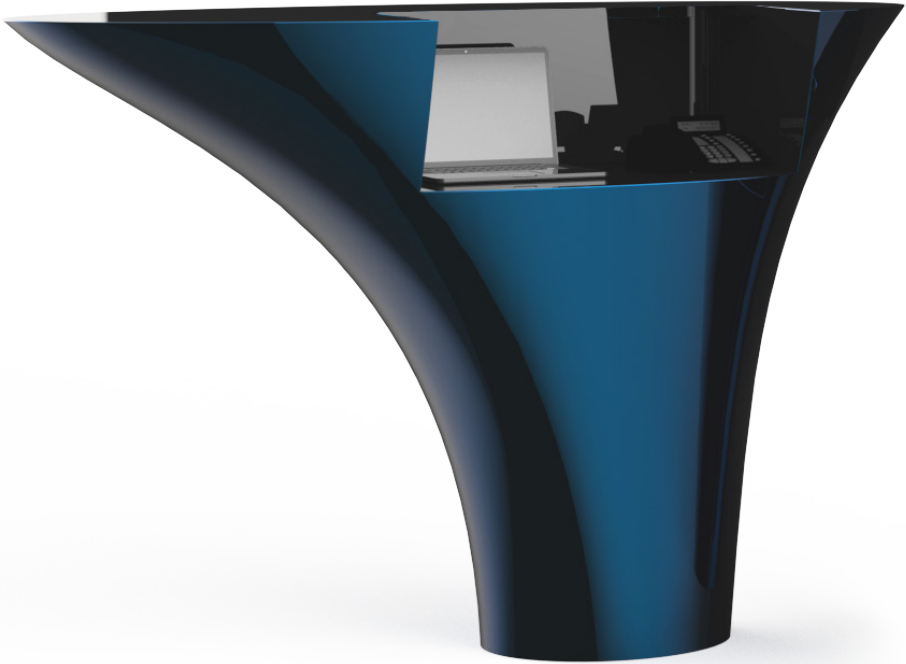
EMBLEM CHAIR MOHAIR SEAT

STONE FLOORING THROUGHOUT
+ DINING TABLE

BLUE SCHEME

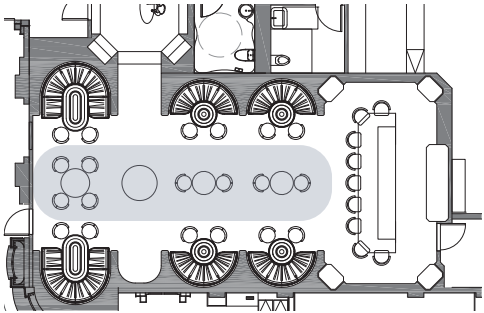


CHROME FINISH
(BLUE)



FF&E
BLUE SCHEME
HOST DESK



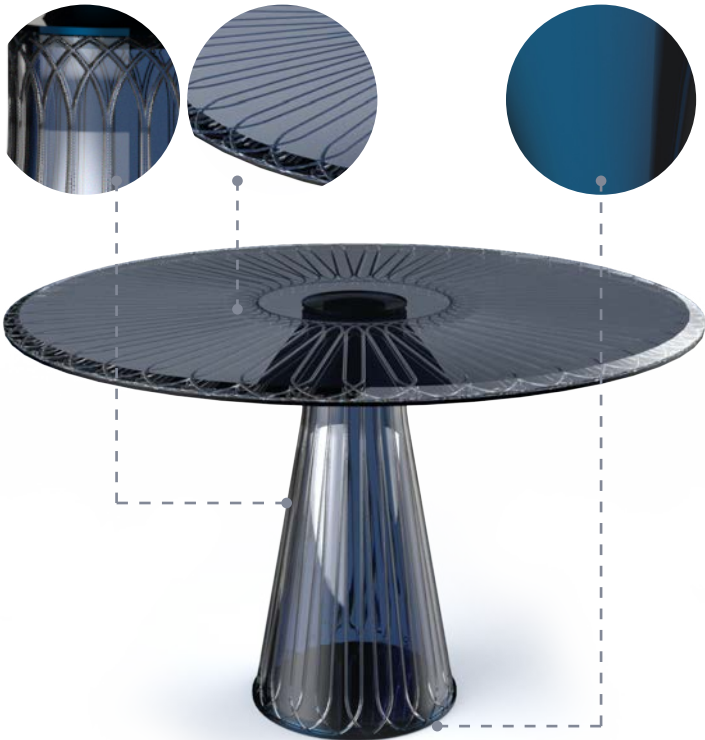


MARBLE
(WHITE CARRARA) CLEAR CRYSTAL



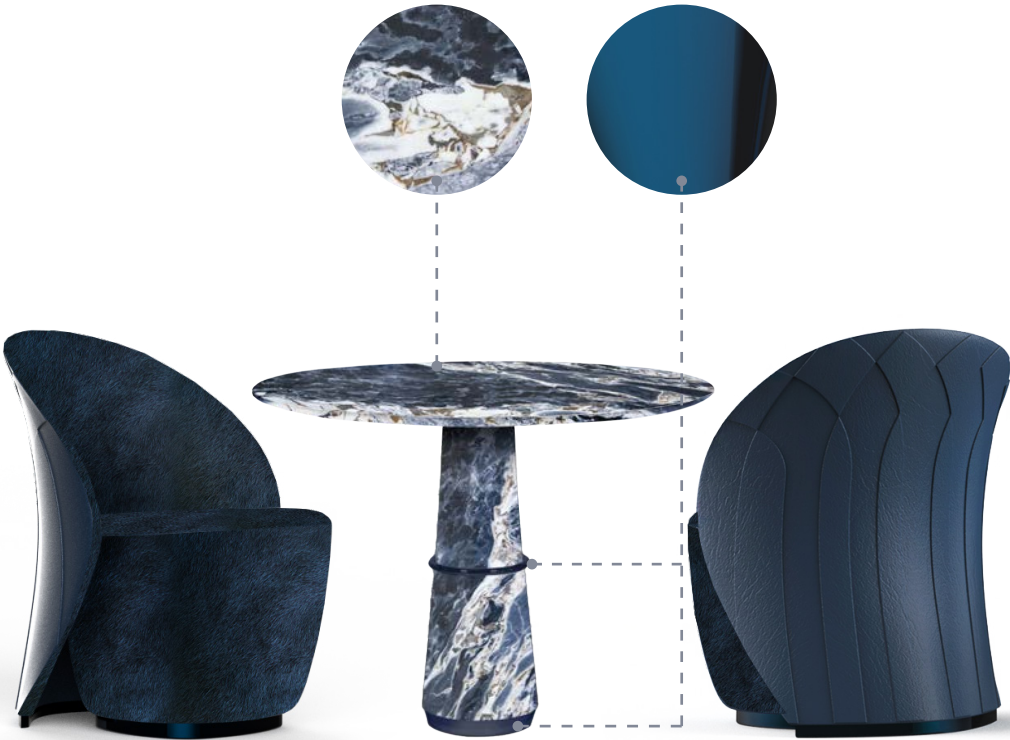
OFFERING TABLE
BACCARAT NEW ANTIQUE TABLE BY
MARCEL WANDERS
OPTION 2

GEOMETRIC
ETCHED GLASS CHROME FINISH
(BLUE)



OFFERING TABLE
STUDIO MUNGE
OPTION 1

MARBLE
(BLUE GALAXY) CHROME FINISH
(BLUE)



DINING CHAIR
BY STUDIO MUNGE

DINING TABLE
AGRA BY BRABBU

DINING CHAIR
BY STUDIO MUNGE

FF&E
BLUE SCHEME
LOUNGE FURNITURE



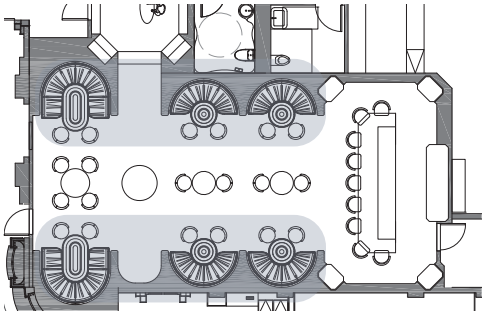


TABLE LAMP
BELLA PLISSE BY MW
(SUGGESTED BY CLIENT- FUNCTION TO BE
CUSTOMIZED FOR PROJECT)



TABLE LAMP
MUNETTA BY ITALAMP
OPTION 2



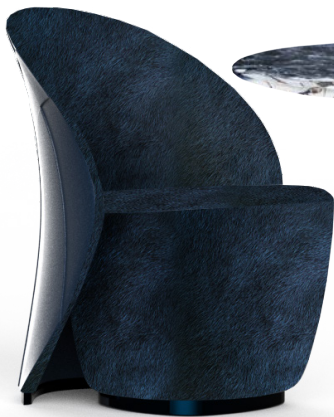
BANQUETTE



DINING TABLE
AGRA BY BRABBU



DINING CHAIR
BY STUDIO MUNGE



DINING CHAIR
BY STUDIO MUNGE



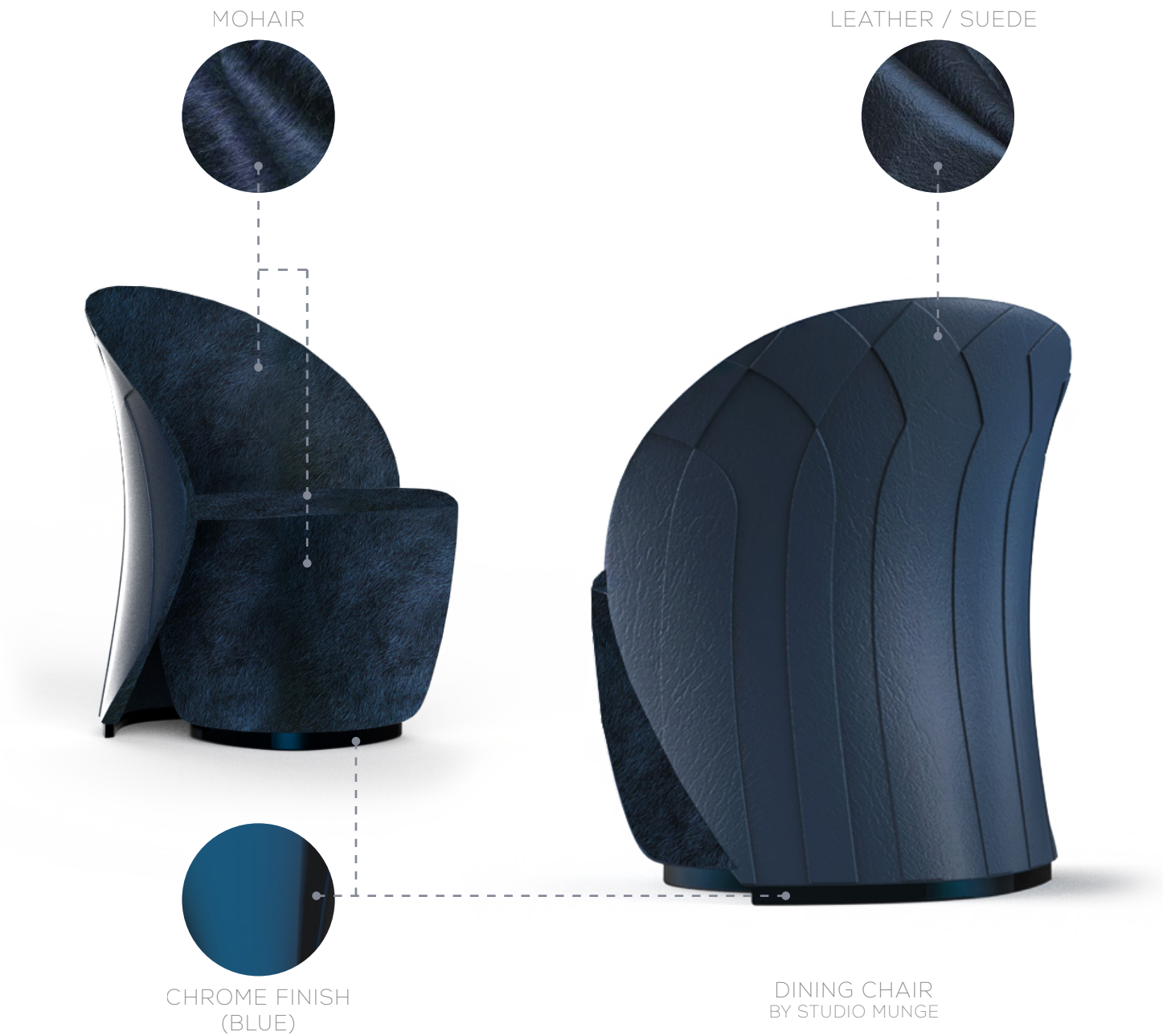
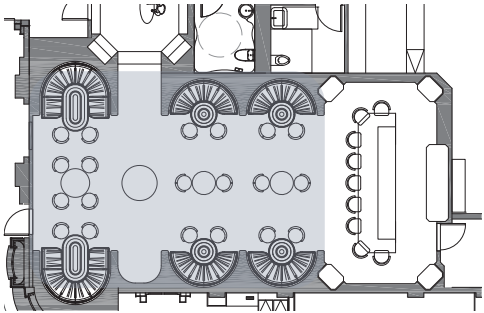
DINING TABLE
AGRA BY BRABBU



BANQUETTE

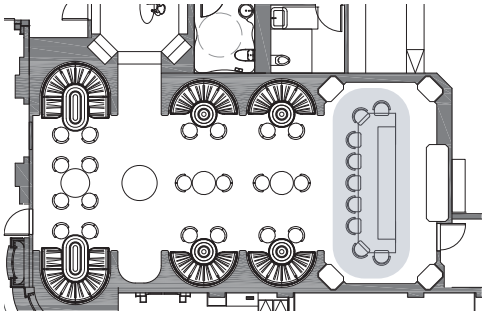
FF&E
BLUE SCHEME
LOUNGE FURNITURE





FF&E
BLUE SCHEME
LOUNGE FURNITURE

DINING CHAIR
BY STUDIO MUNGE



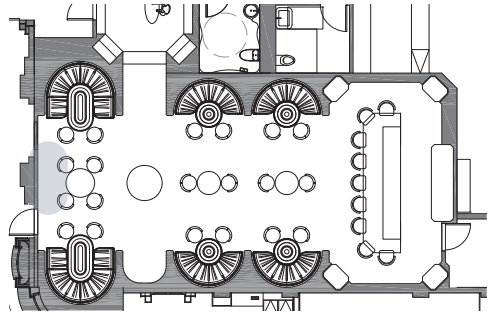
GLASS CHANDELIER
STUDIO MUNGE DESIGN
CUSTOM MADE BY GABRIEL SCOTT



COUNTER STOOL
ELLIS BY MEZZO COLLECTION

FF&E
CRYSTAL ROOM FURNITURE





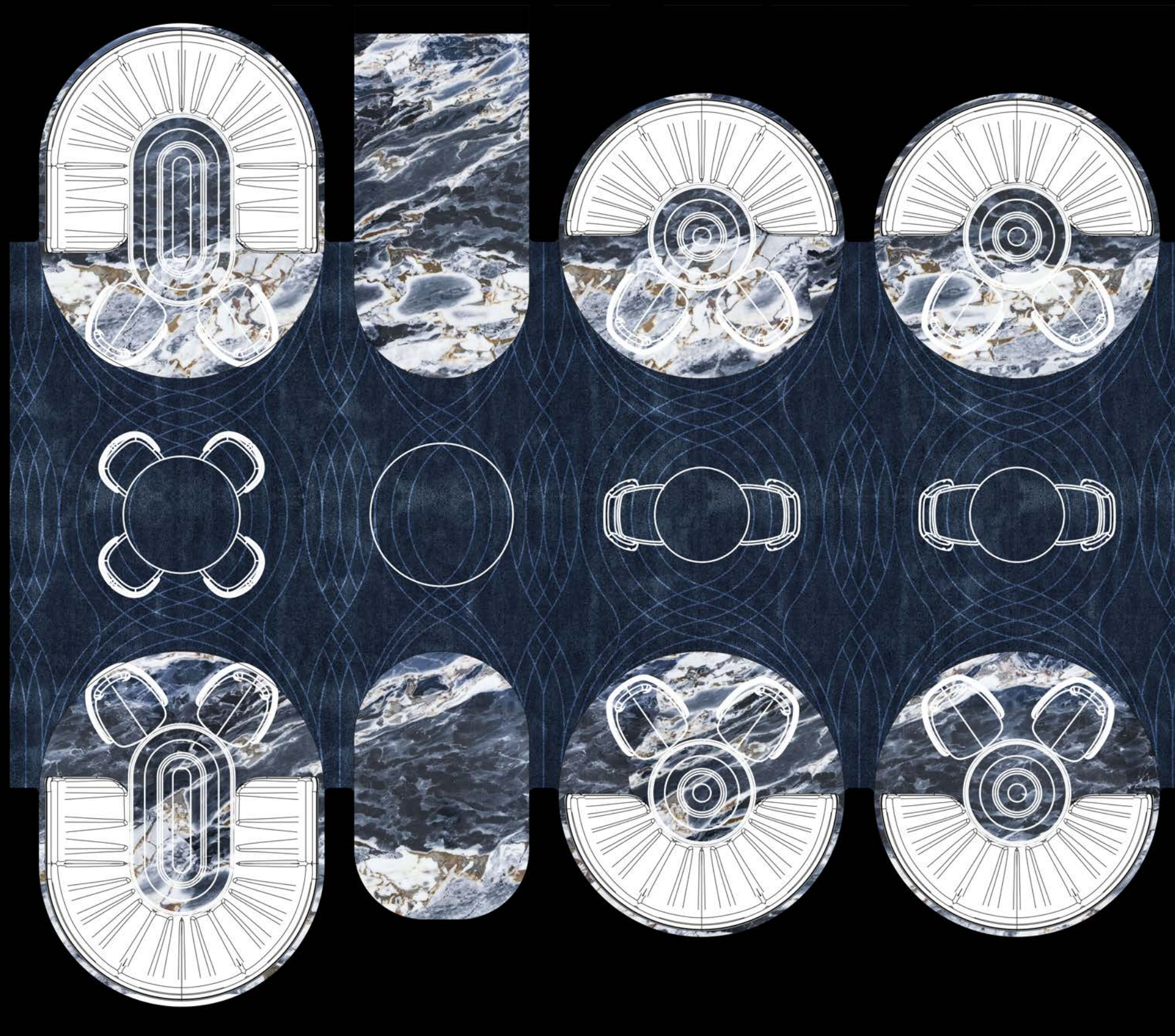
RADO KIROV

RADO KIROV IS A BULGARINA / SOUTH AFRICAN ARTIST WHOSE WORK HAS ITS FOUNDATION IN THE TRANSFORMATION OF BASE MATERIAL INTO SOMETHING MESMERISING. IT SUGGESTS SOMETHING THAT IS FOREVER MOVING AND UNSTABLE WITH A MATERIAL THAT IS HARD AND FIXED. THE VISUAL IMPACT OF SHIM-

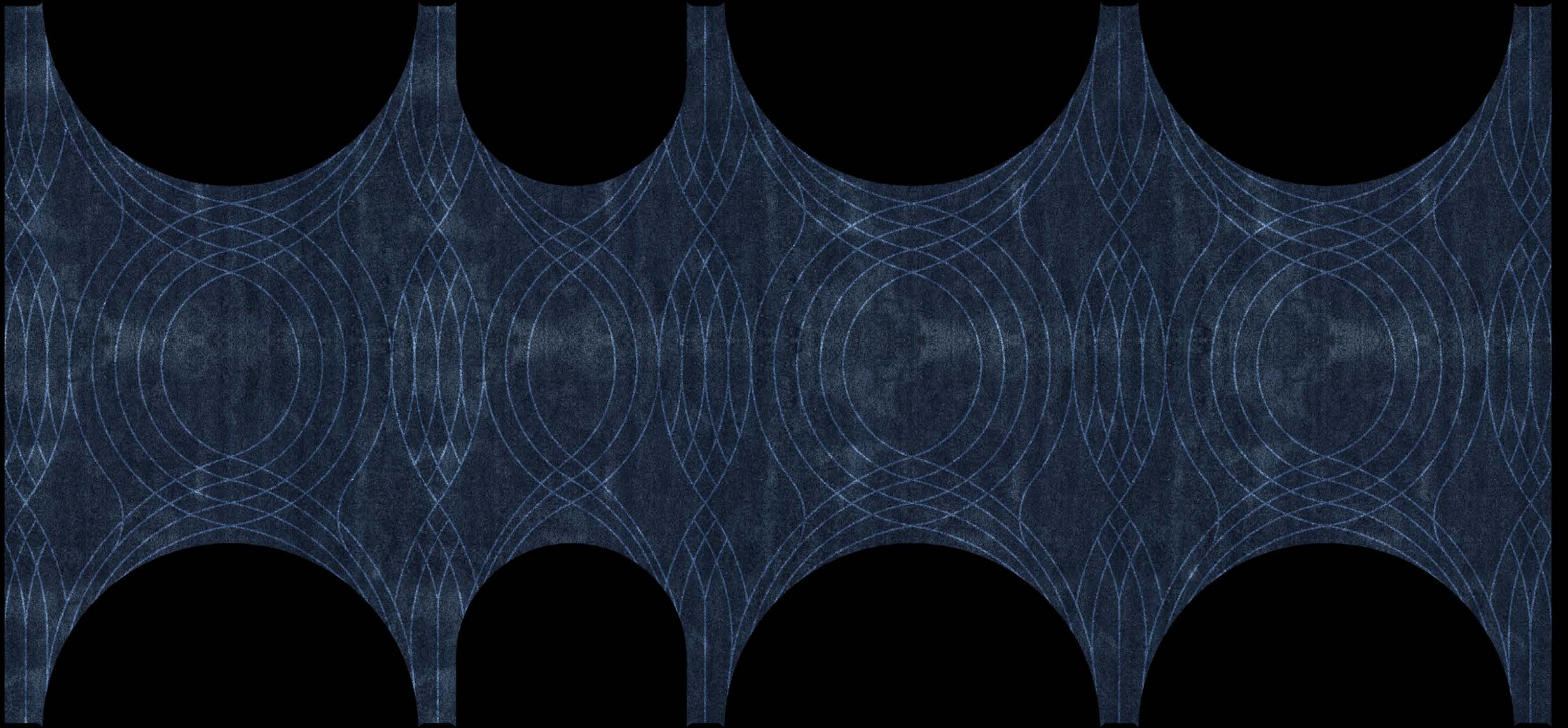
MERING METAL ASSIMILATING AND DISTORTING ITS ENVIRONMENT
- CONSTANTLY CHANGING AS THE VIEWER MOVES THEIR VIEWPOINT
- SPEAKS OF POSSIBILITY, POTENTIAL AND CHANGE.

FF&E
ART DIRECTION



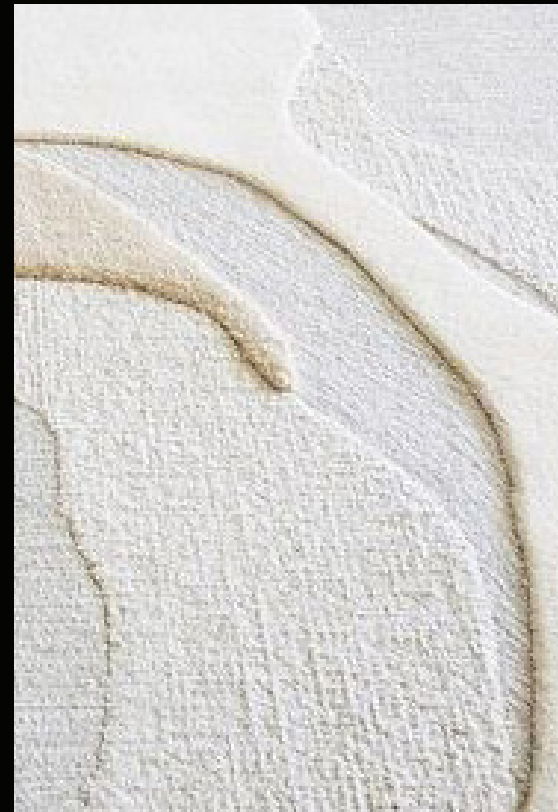


FF&E
BLUE SCHEME
CARPET DESIGN



FF&E
BLUE SCHEME
CARPET DESIGN

THE
RUG
COMPANY
H A N D M A D E



TEXTURE RICH HANDTUFTED LUXURY CUSTOM DESIGNED WOOL & SILKY
NYLON CARPET, CUT PILE TO LOOP PILE GRADIATION TECHNIQUE &
LOOPED RECESSED MOTIF

FF&E
RECOMMENDED CARPET VENDOR

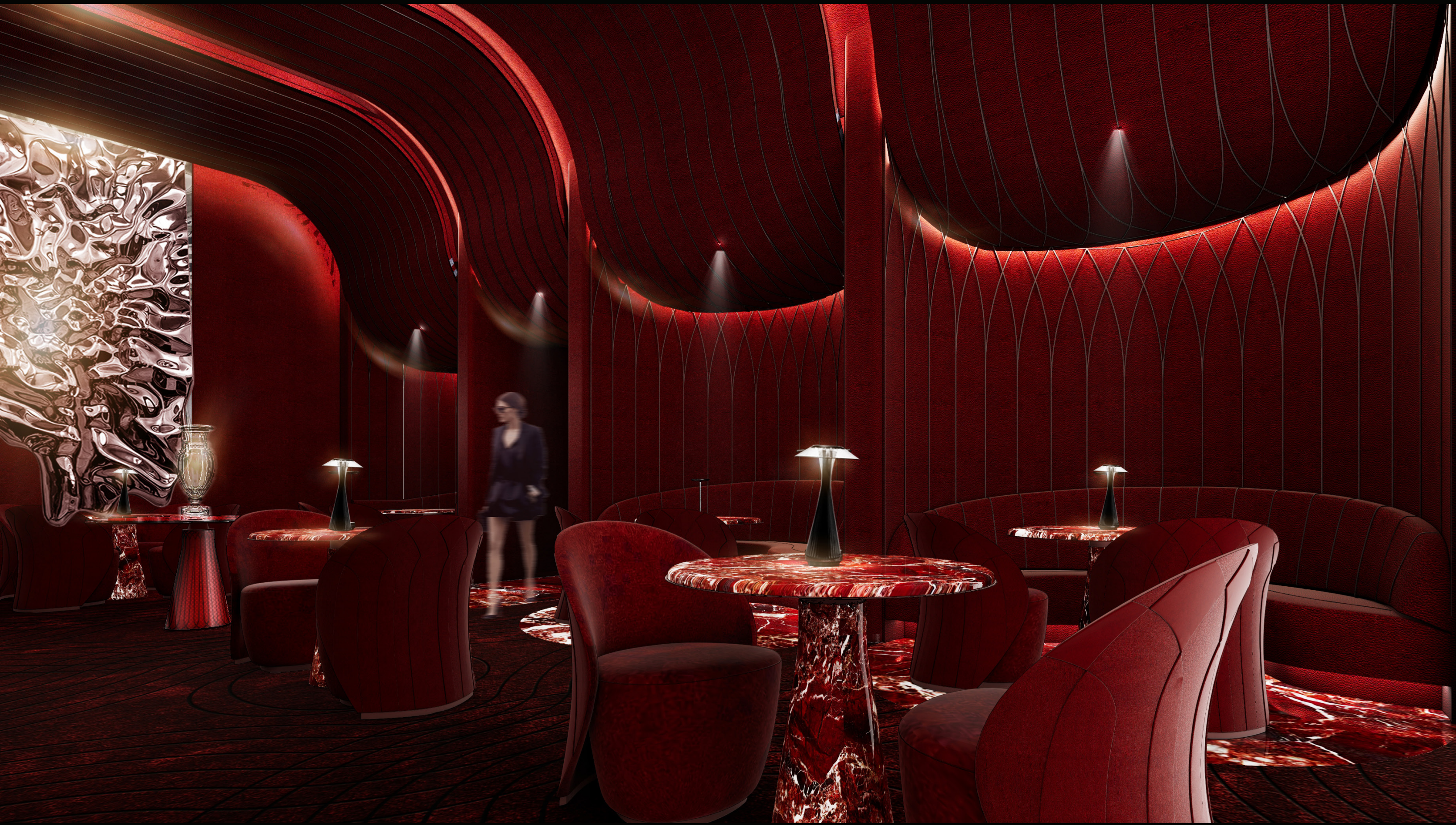
RUBY (OPTION 3)









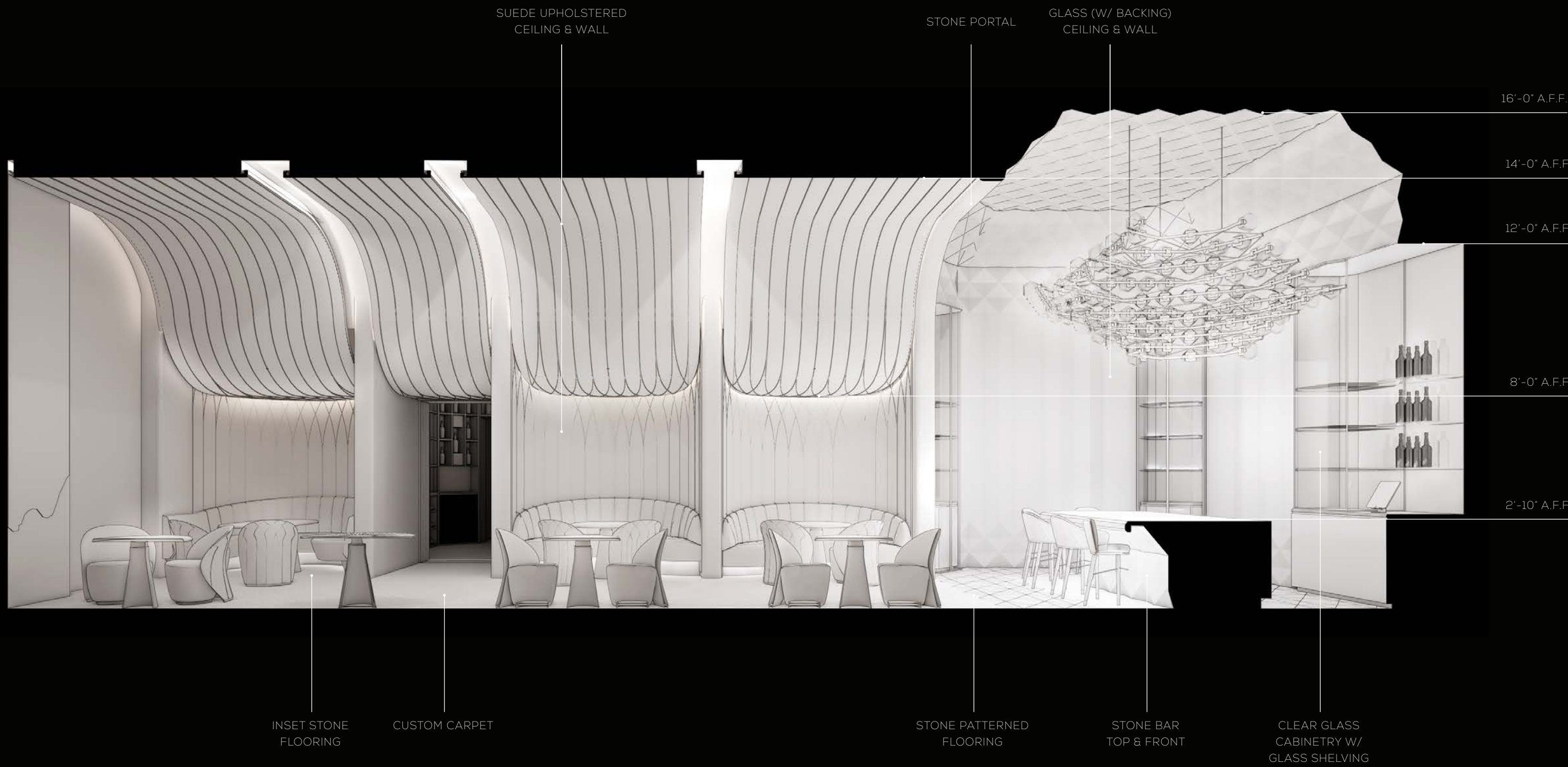








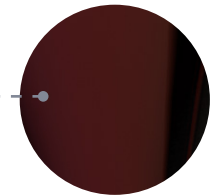
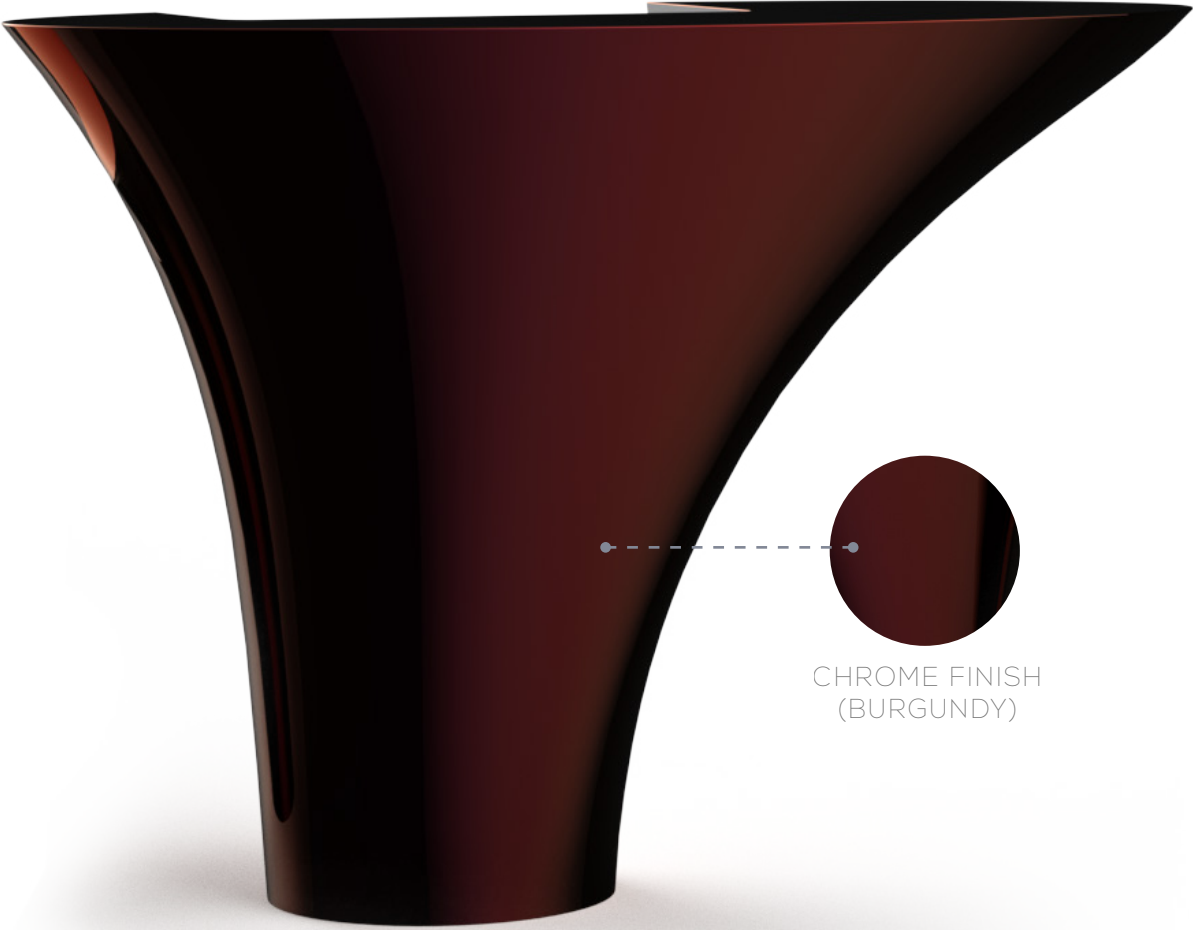
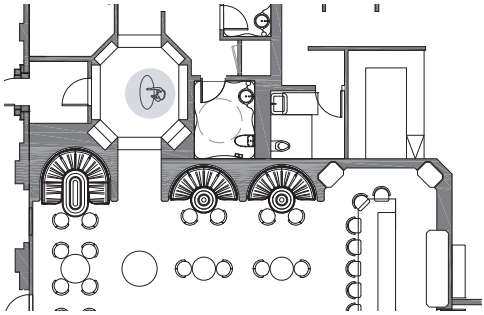




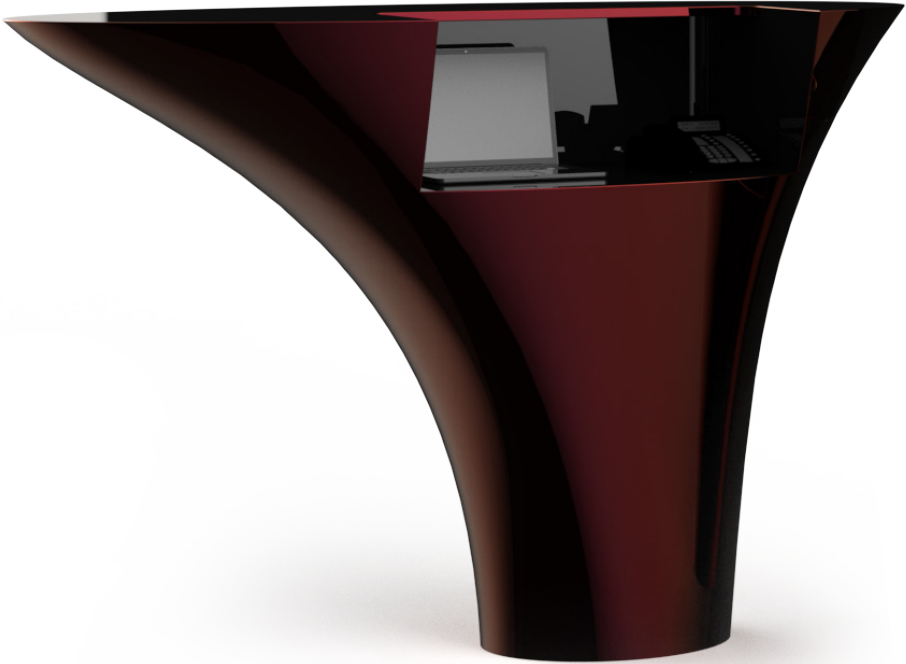
THE JOURNEY | MATERIAL PALETTE



BURGUNDY SCHEME

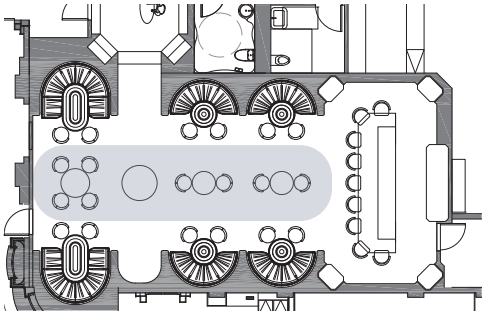


CHROME FINISH
(BURGUNDY)

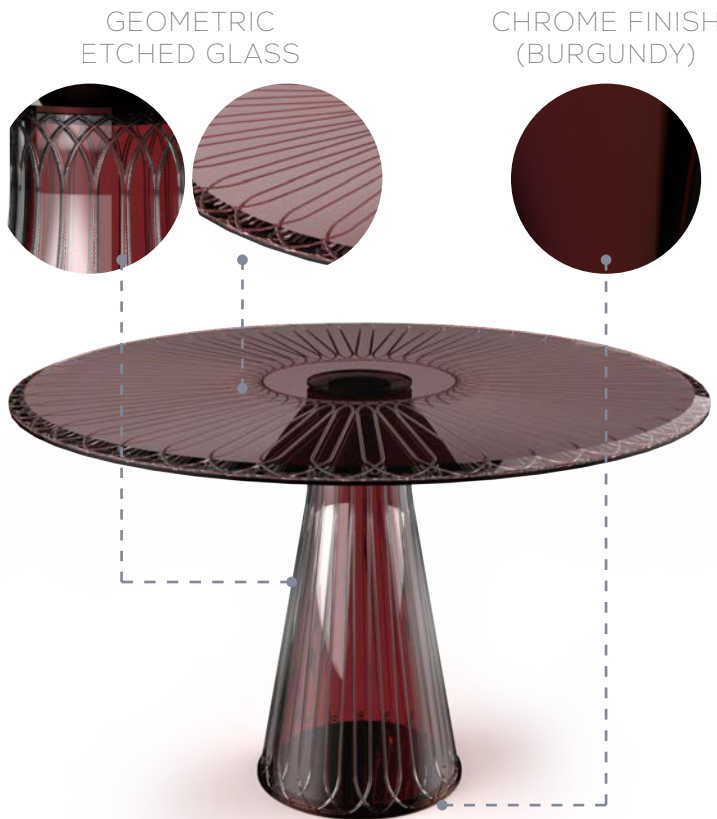


FF&E
BURGUNDY SCHEME
HOST DESK





OFFERING TABLE
BACCARAT NEW ANTIQUE TABLE BY
MARCEL WANDERS
OPTION 2



OFFERING TABLE
STUDIO MUNGE
OPTION 1



DINING CHAIR
STUDIO MUNGE

DINING TABLE
AGRA BY BRABBU

DINING CHAIR
STUDIO MUNGE

FF&E
BURGUNDY SCHEME
LOUNGE FURNITURE



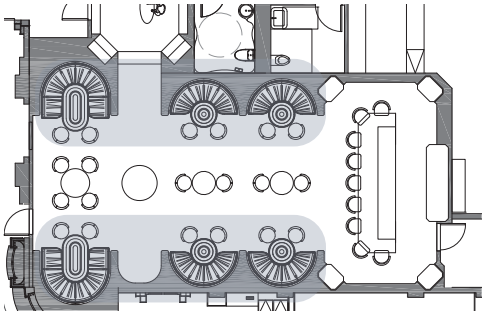


TABLE LAMP
BELLA PLISSE BY MW
(SUGGESTED BY CLIENT- FUNCTION TO BE
CUSTOMIZED FOR PROJECT)



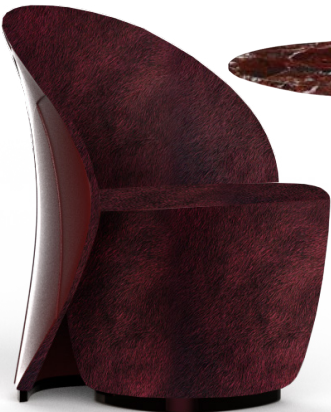
TABLE LAMP
XTAL ACRUX BY AMBIENTEC
OPTION 2



DINING TABLE
AGRA BY BRABBU



DINING CHAIR
STUDIO MUNGE



DINING CHAIR
STUDIO MUNGE



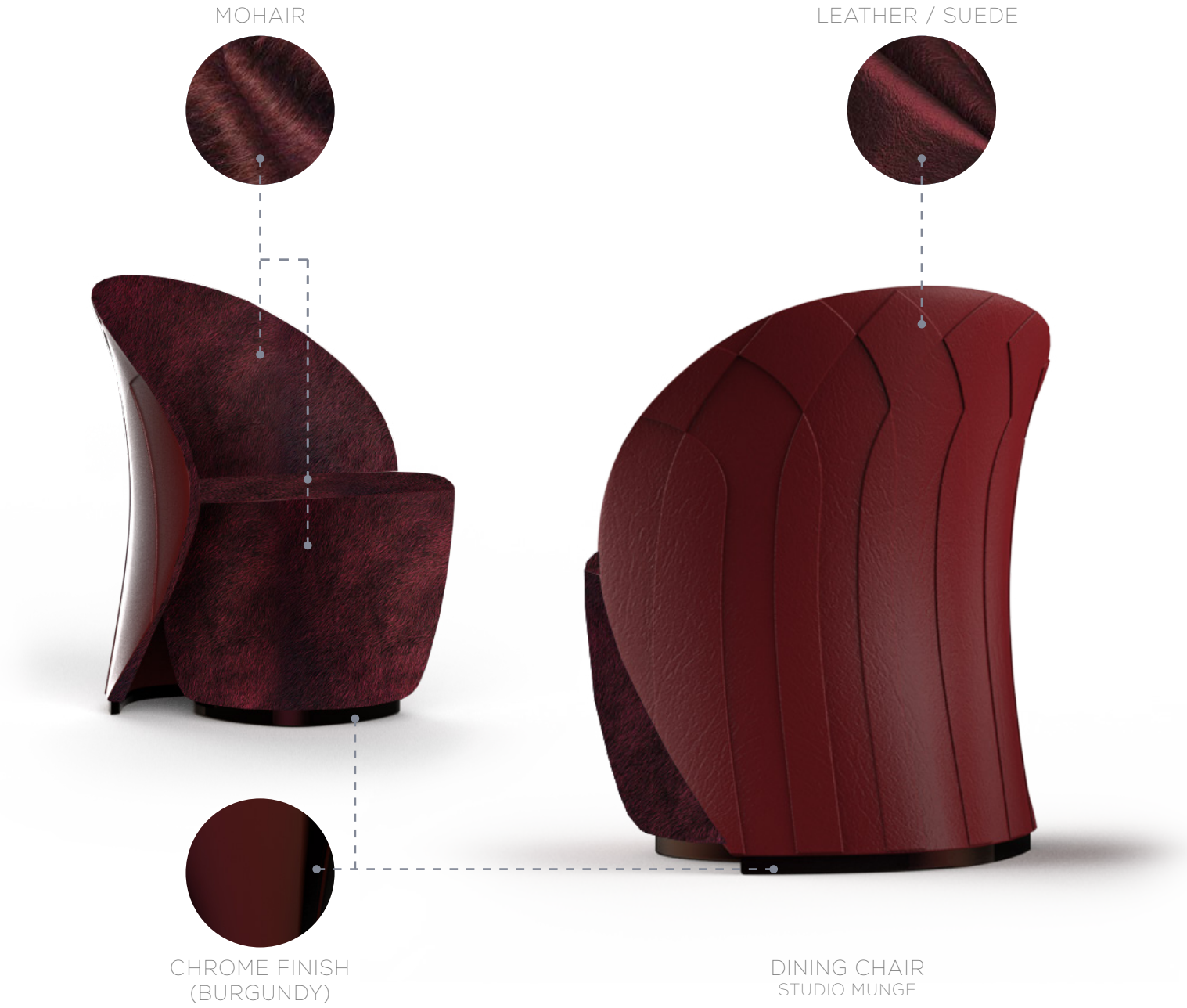
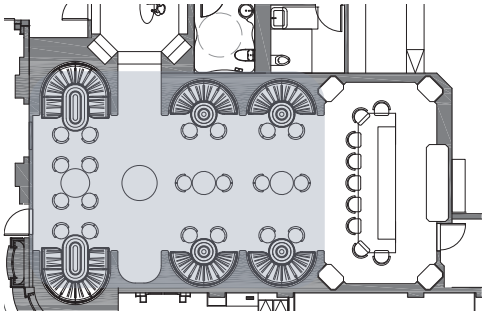
DINING TABLE
AGRA BY BRABBU



BANQUETTE

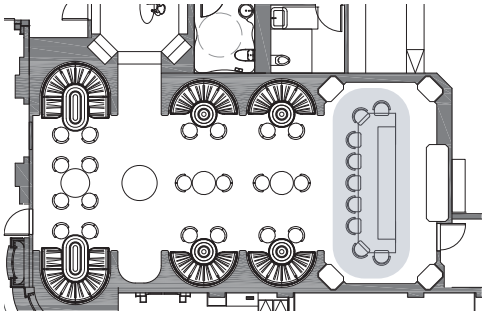
FF&E
BURGUNDY SCHEME
LOUNGE FURNITURE





FF&E
BURGUNDY SCHEME
LOUNGE FURNITURE





GLASS CHANDELIER
STUDIO MUNGE DESIGN
CUSTOM MADE BY GABRIEL SCOTT



VELVET

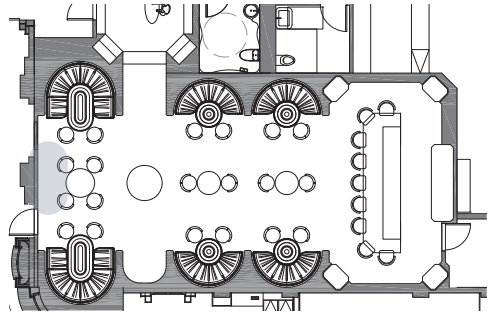
CHROME FINISH

LEATHER

COUNTER STOOL
ELLIS BY MEZZO COLLECTION

FF&E
CRYSTAL ROOM FURNITURE





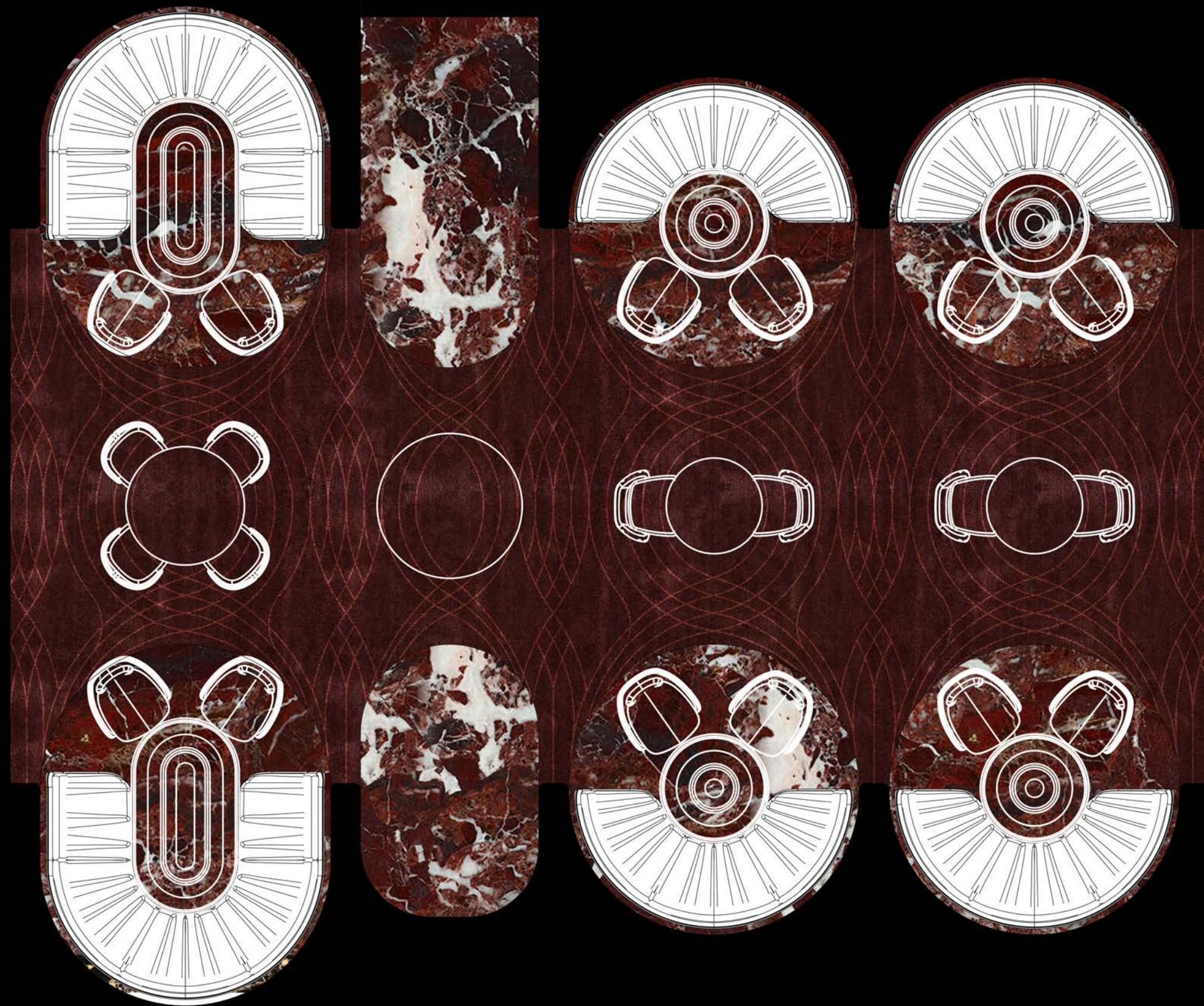
RADO KIROV

RADO KIROV IS A BULGARINA / SOUTH AFRICAN ARTIST WHOSE WORK HAS ITS FOUNDATION IN THE TRANSFORMATION OF BASE MATERIAL INTO SOMETHING MESMERISING. IT SUGGESTS SOMETHING THAT IS FOREVER MOVING AND UNSTABLE WITH A MATERIAL THAT IS HARD AND FIXED. THE VISUAL IMPACT OF SHIM-

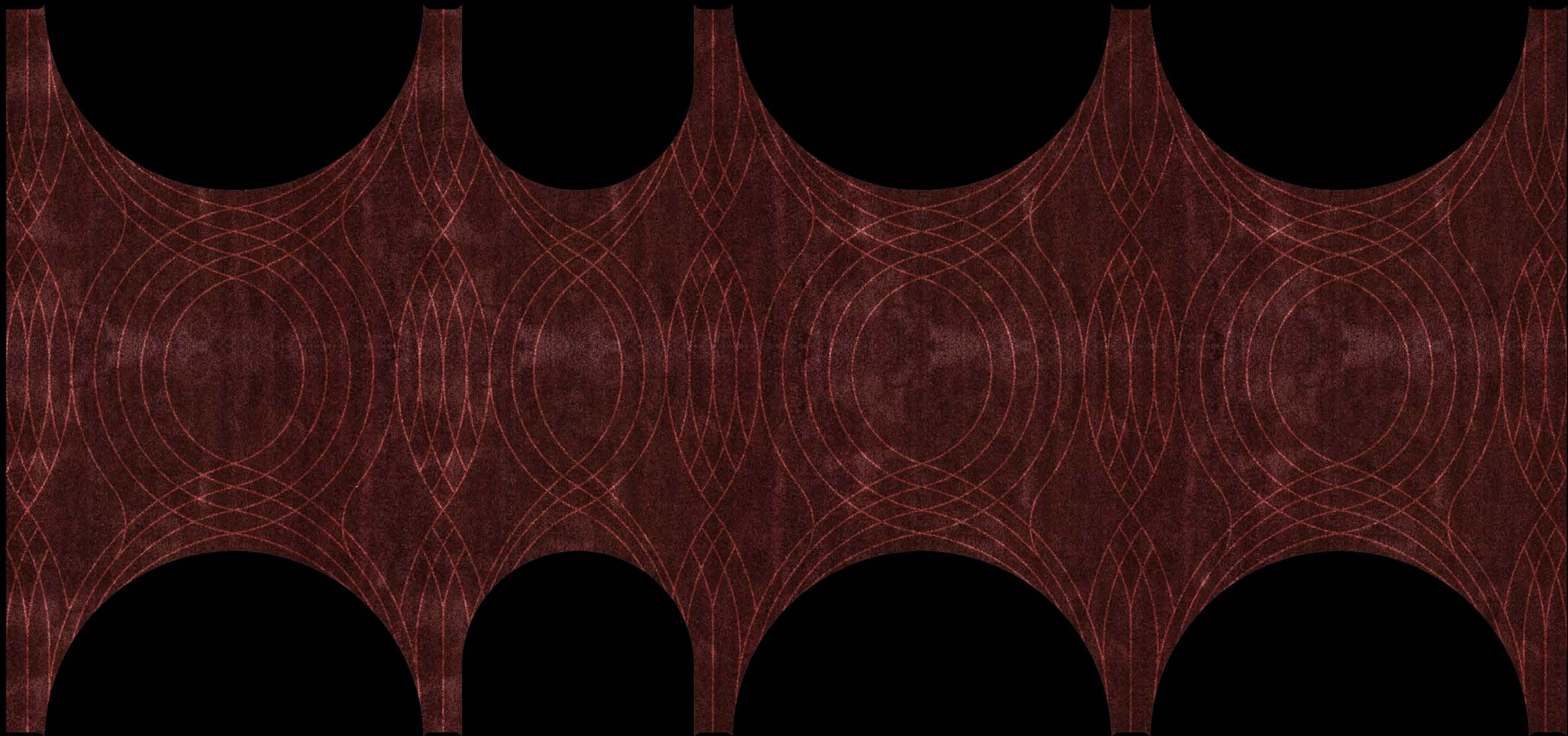
MERING METAL ASSIMILATING AND DISTORTING ITS ENVIRONMENT
- CONSTANTLY CHANGING AS THE VIEWER MOVES THEIR VIEWPOINT
- SPEAKS OF POSSIBILITY, POTENTIAL AND CHANGE.

FF&E
ART DIRECTION





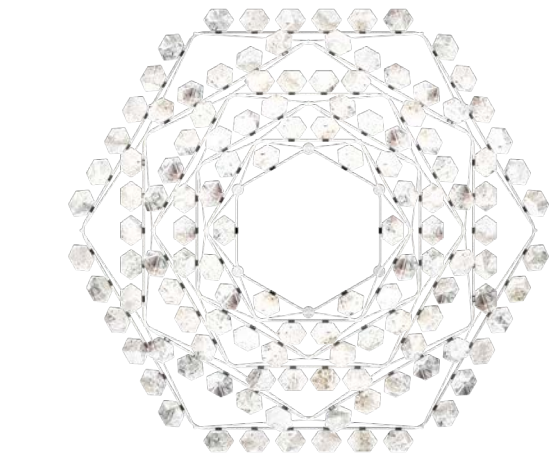
FF&E
BURGUNDY SCHEME
CARPET DESIGN



FF&E
BURGUNDY SCHEME
CARPET DESIGN



GLASS TEXTURE



TOP VIEW



10' 6" DIA X 4' 8" H CUSTOM MOULDED CRYSTAL GLASS
CHANDELIER WITH CHROME & GLASS ACCENTS
ALESSANDRO MUNGE COLLECTION IN
COLLABORATION WITH GABRIEL SCOTT

FF&E
CRYSTAL ROOM CHANDELIER



FRONT VIEW



CONNECTION DETAILS

PLUMBING FIXTURES +
HARDWARE



AXOR - UNO ELECTRONIC
BASIN-MIXER



AXOR - DESIGN TRAP
FLOWSTAR S



TOTO - WASHLET
G450 INTEGRATED
SMART TOILET



AXOR - UNIVERSAL
CIRCULAR TOILET PAPER
HOLDER DOUBLE



AXOR - UNIVERSAL
CIRCULAR TOILET PAPER
HOLDER DOUBLE



WASHROOM
WALL SCONCE

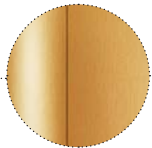


IL PEZZO MANCANTE -
12 WALL SCONCE

GLASS SHELF

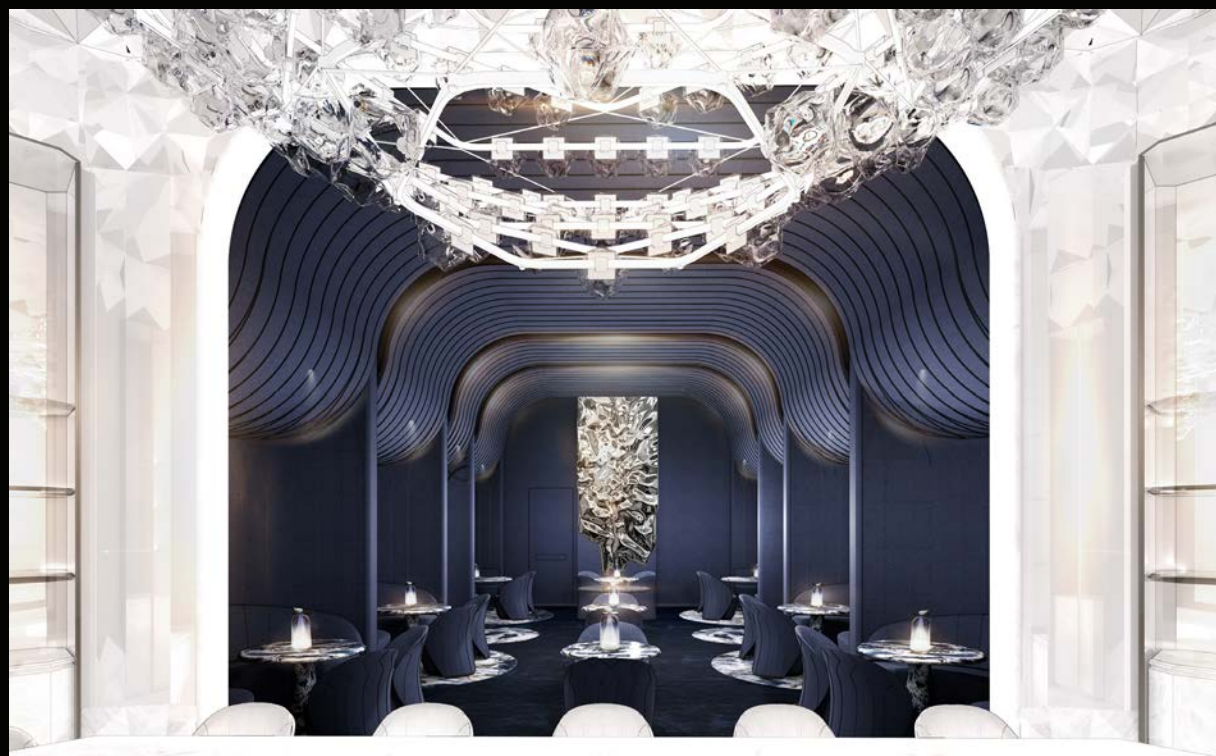


BRASS METAL
SATIN FINISH



STONE FLOORING





ORIGINAL BAR HAS BEEN ADJUSTED AS PER ARI'S COMMENT

THE JOURNEY | COLOUR SCHEME COMPARISON



BLACK SCHEME

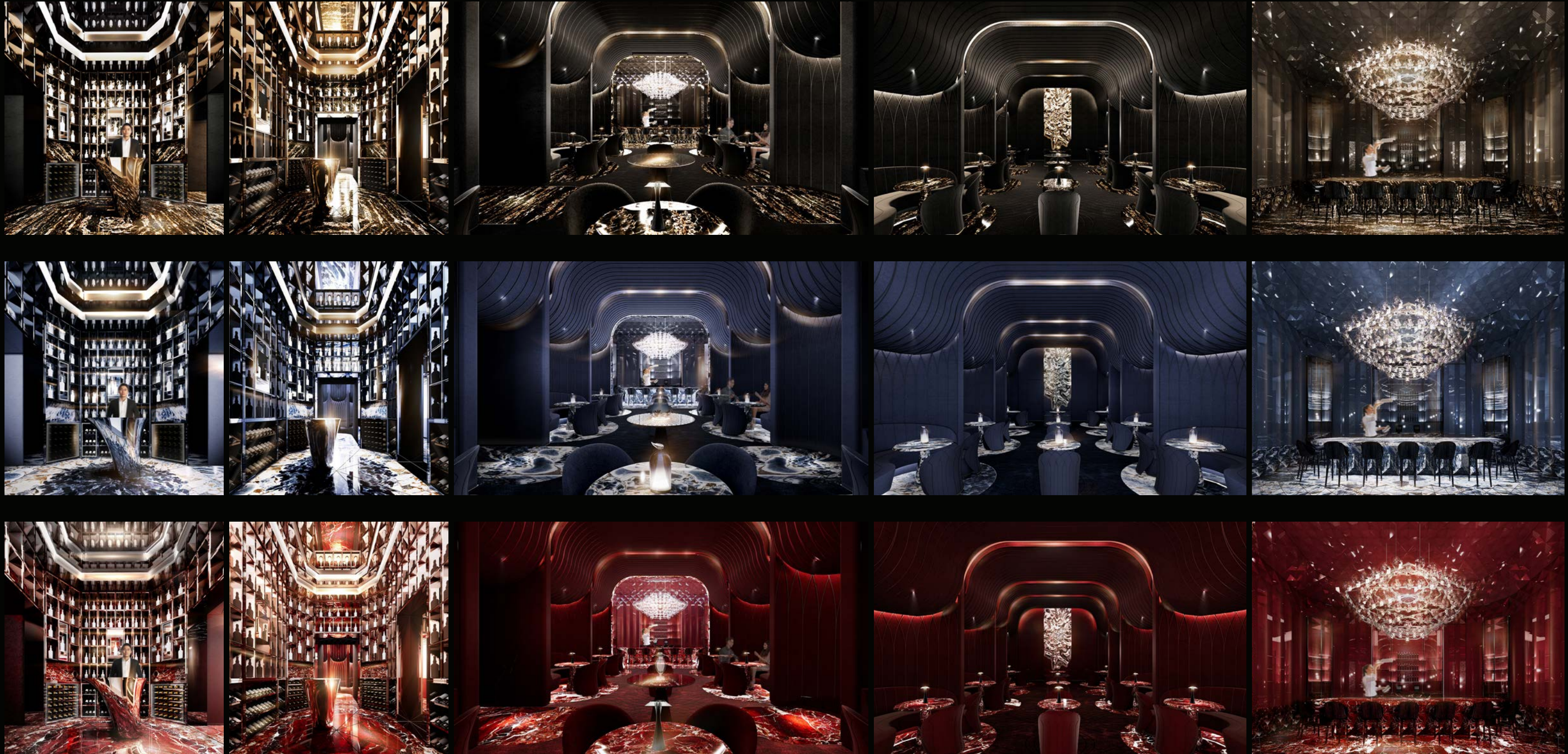


BLUE SCHEME



BURGUNDY SCHEME

THE JOURNEY | COLOUR SCHEME COMPARISON



THANK YOU!