

UNDERSTANDING AND SPECIFYING FABRIC&WALLCOVERING

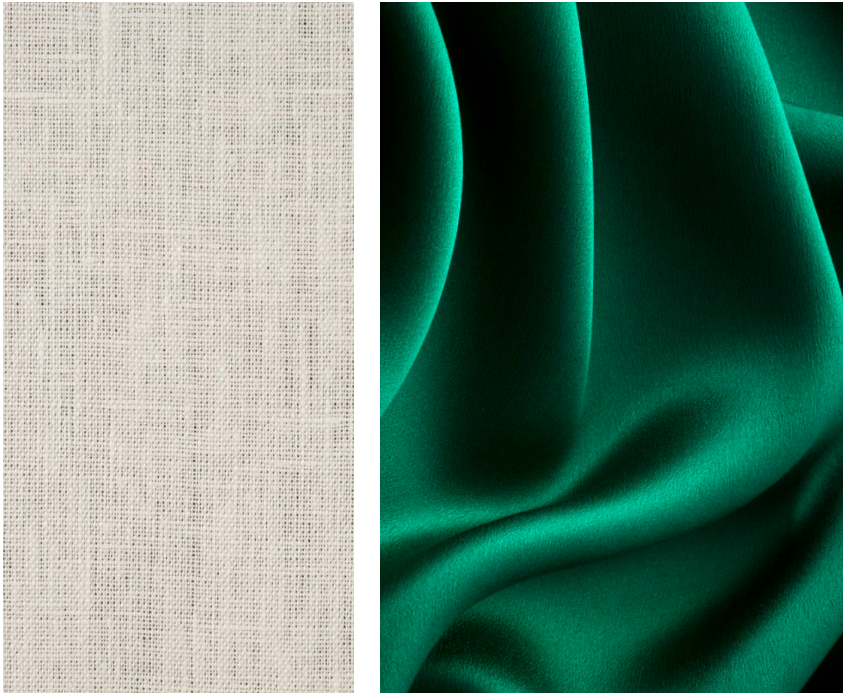
STUDIO MUNGE EDUCATIONAL SEMINAR

STUDIO
MUNGE

TYPES OF FABRIC & FIBRE

RESIDENTIAL

- FIBRE**
- Silk
 - Bamboo Silk
 - Cotton
 - Linen
 - Wool*
 - Jute
 - Cashmere
 - Mohair



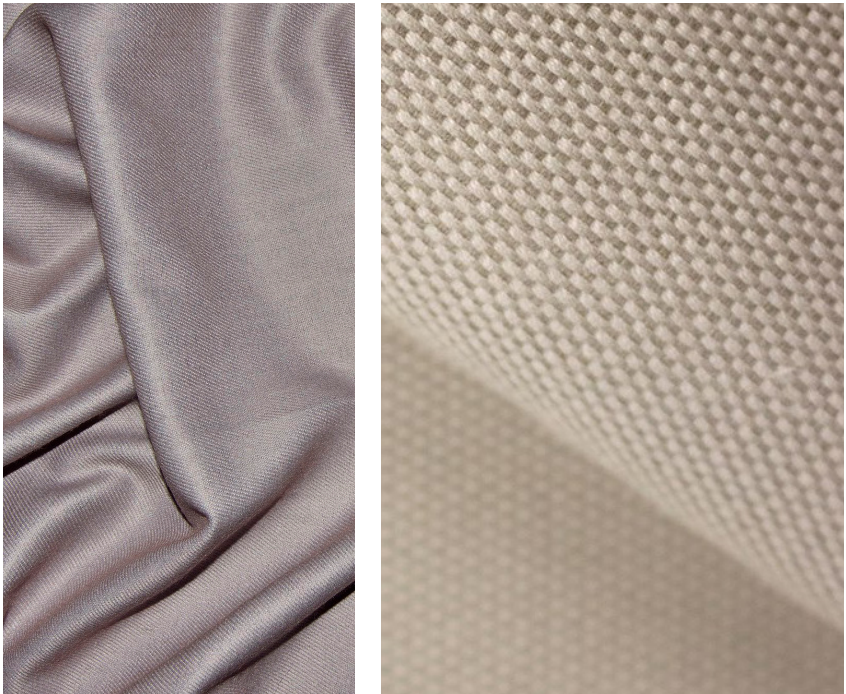
- CONSTRUCTION**
- TYPE**
- Velvet
 - Woven
 - Chenille
 - Mohair
 - Pattern
 - Texture



PURELY AESTHETIC

CONTRACT

- FIBRE**
- Polyester
 - Nylon
 - Viscose
 - Rayon
 - Polyproelene(Outdoor)
 - Acrylic (Outdoor)



DURABILITY AND LONGESTIVEITY

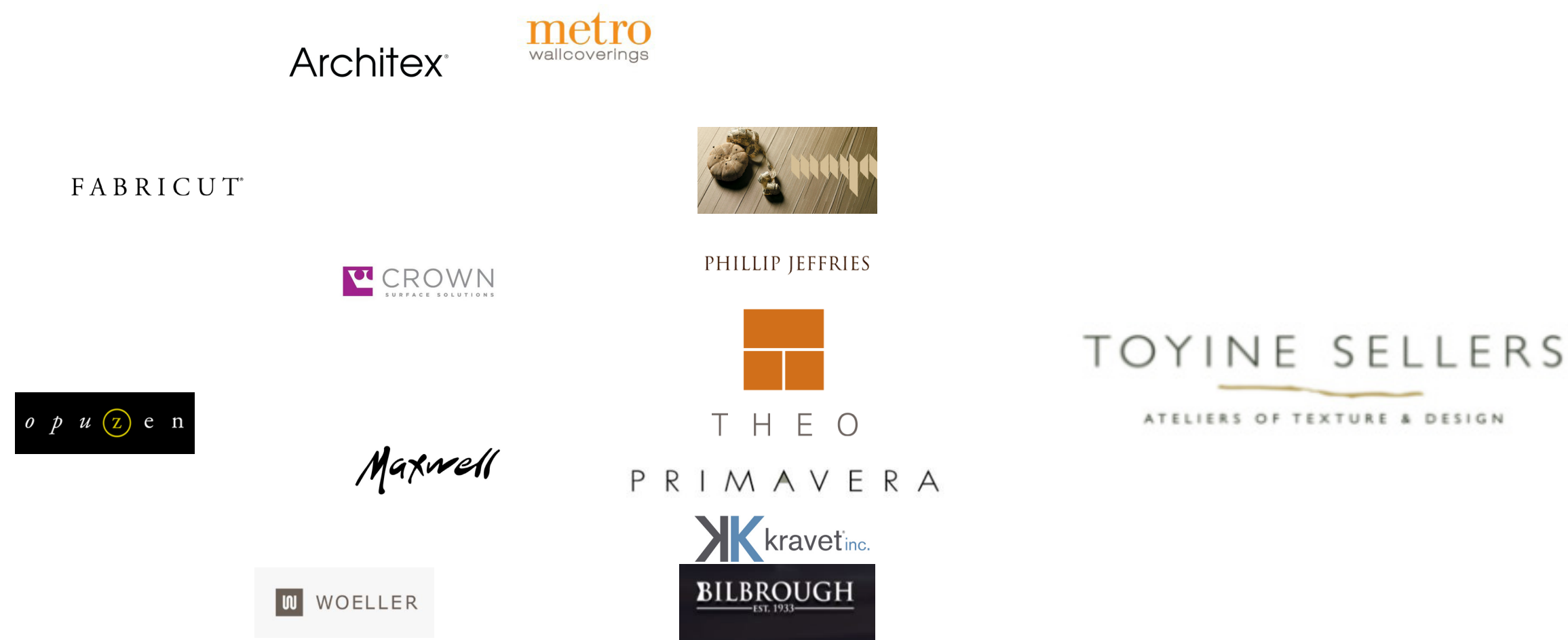
NOTE: Regardless of application, most fabric is blended, fabrics heavy on natural fibre is typically more residential than fabrics with artificial fibre, which leads toward contract



LET'S NOT FORGET ABOUT WALLCOVERING!



FABRIC AND WALLCOVERING SUPPLIERS



HOW TO CHOOSE FABRICS/WALLCOVERING?

ARCHITECTURAL

FB-Fabric for Millwork

WC-Wallcovering

FFE

ACF-Accessory Fabrics

CGF-Casegood Fabrics

SGF-Soft Seating Fabrics

WTF-Window Treatment Fabrics

Tags above apply to both indoor and outdoor FF&E

WHAT ARE MY NEEDS?

-What kind of project am I working on?

(Home, Restaurant, Condo,Hotel, Restaurant, Outdoor)-this are the factors in understanding what type of fabric and wallcovering (eg contract vs residential)

-What is my budget?

Budget parameters will be outlined by your project lead from client discussion

-What is my lead time?

When the goods needed for your project? Project Leads will have this accounted for in schedule

-What fabric am I using more of and less of?

This helps us balance level of fabric and we are using on a project, EG banquette fabric=high volume, lesser price point than accent fabric on pillow, which there is less of....

-Know your hero fabrics! Where do we embellish? What is our focus?

Pillows? Trim? Heavy Texture? What are we evoking through the use of fabric

Are we embellishing an accent wall with a high end wallcovering-small area, big impact?

COMPLIANCE AND DURABILITY

CONTRACT-Furniture and Unadhered Panelling

FIRE CODES-North America

UPHOLSTERY CAL TB 117

(California specific-accepted North America wide)

UPHOLSTERY UFAC Class 1/NFPA 260

(North America wide)

DRAPERY NFPA 701

(United States Specific)

DRAPERY CAN ULC-S 109

(Canada Specfic-fairly new)

CONTRACT-Millwork Adhered Panelling(Wallcovering)

FIRE CODES-North America

CLASS ASTM E-84

NOTE: For wallcovering, if actually product is not fire rated, fire rating backing MAY be accepted. AOR to provide direction and clarity of this before selection to be made and presented internally/externally

NOTE: If drapery is not fire rated or durable and need a protective coating to make it pass compliance, there is a potential that the hand of the fabric may be compromised. Confirm with lead before proposing any non-rated/protected fabrics to develop game plan. Suppliers can support with this and getting their feedback on change in fabric is key to moving forward if you go this route!

DURABILITY-SM INTERNAL STANDARD

SEATING/CASEGOOD

UPHOLSTERY FABRIC-50,000 Double Rubs

*if brand standard present for project and state their required double rub, it supersedes our standar

ACCENT FABRICS-20,000 Double Rubs

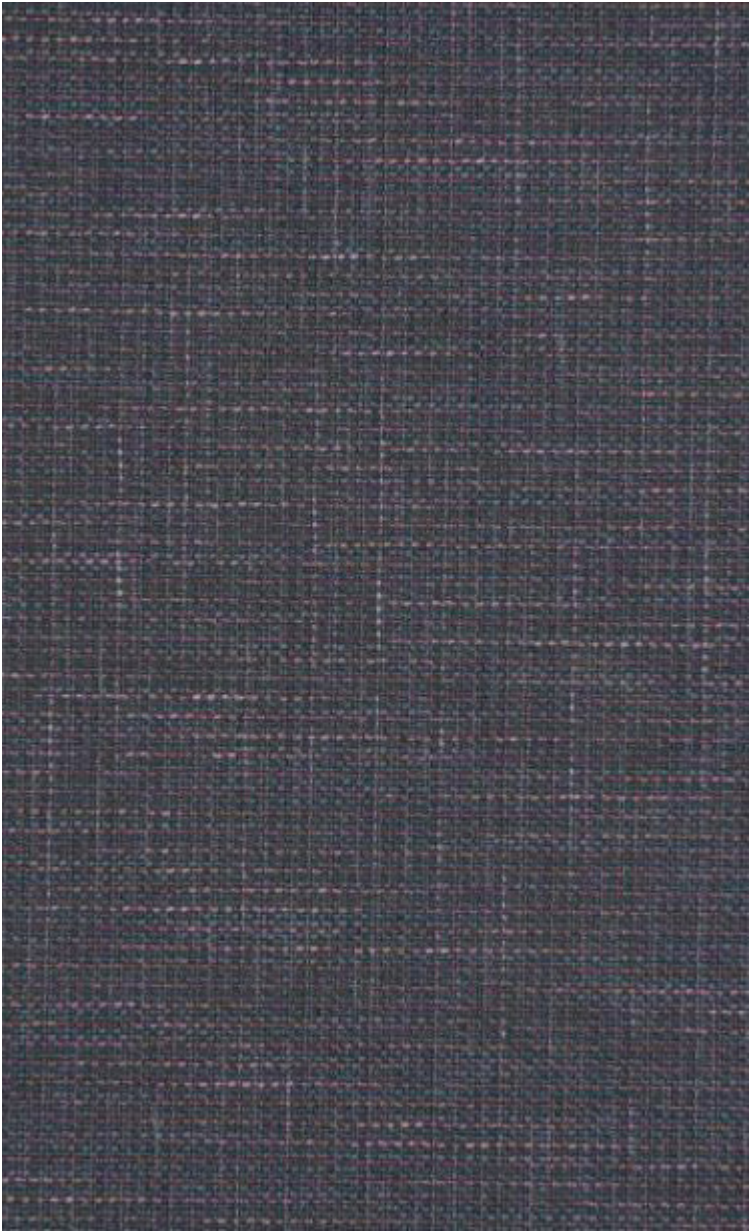
*if brand standard present for project and state their required double rub, it supersedes our standard

*Residential Fabrics still require durability, but not fire code, lead to confirm durability count per clients expectation



INTEPERETTING SPECIFICATION

FABRIC



Product Number	Content
9316623	64% Acrylic, 36% Polyester
Uses	Application
Contract Upholstery	Fabric
Width	Vertical Repeat
55.00 in (139.70 cm)	None
Colors	Horizontal Repeat
Blue, Lavender / Purple	None
Scale	Fire Codes
Not Available	UFAC Class I / NFPA 260
Railroaded	Categories
Not Railroaded	Easy To Clean, Fibreguard, Wovens, Environment Plus / Green
Finish	Design Types
Fibreguard	Texture Plain
Backing	Collection
None	None
Book	Book Date
Foundations Fibreguard Performance	06/2018
Styles	Double Rubs
None	Exceeds 40,000 Double Rubs Wyzenbeek Method
Cleaning Codes	Country of Origin
WW	Turkey
Additional Product Notes	Brand
Fibreguard, Easy To Clean Finish, Passes 35,000 Martindale Tst, Oeko Tex Standard 100, Ca Tb 117-2013, Exclusive Pattern, Eco /	Fabricut Contract

WALLCOVERING



specifications

Designer: Stacy Garcia | New York
Material: Vinyl
Backing: Non-woven
Brand: Stacy Garcia | New York
Pattern Match: Random Match, Reverse Hang
Product Type: Wallcovering
Roll Width: 52-54 in (132-137 cm)
Fire Rating: Class A ASTM E-84
Vertical Repeat: N/A
Horizontal Repeat: N/A

For more detailed information see technical specifications.



SPECIFICATIONS-EXAMPLE 1-FABRIC

HOTEL



Issue Date: Oct-15-21
Issue Type: 90% Construction Documentation
Area: 600 MUR
Supplier: Anthony Inc.
<https://www.anthonyinc.net/>
anthony@anthonyinc.net
2041 W. Grand Ave, Chicago, Illinois, 60612, United States
Manufacturer: Opuzen
Item Description: Ottoman Seat Upholstery
Product Name: Mohair
Model: 6100-0027
Colour: Green
Content: 100% Mohair
Soil/Stain Treatment/Backing
:
Soil/Stain Treatment/Backing
:
Fabric Width: 54"
Fire Rating: UFAC Class I, CAL TB 117-2013, NFPA 260
Durability: 100,000 Wyzenbeek
Double Rubs
Flame Certificate: Required

Cutting for Approval: Yes
Instructions: REFER TO STUDIO MUNGE INSTRUCTION BOOKLET FOR ALL DETAILS REGARDING PRODUCT AND MATERIALS
Product Docs: [pouf_upholstery](#)
10/15/2021




SPECIFICATIONS-EXAMPLE 2 -UPHOLSTERED PANEL

37 11 NYC HOTEL

MUNGE

FB-300



Issue Date: Oct-04-21

Issue Type: 90% Construction Documentation

Area: Public Space / 300 Third Floor / Meeting Spaces

Supplier: Primavera Interior Furnishing LTD
<http://www.primavera.ca>
wendy@primavera.ca
160 Pears Ave, Toronto, Ontario, M5R 3P8, Canada

Manufacturer: Pollack

Item Description: Wall Panel Fabric @ Meeting Space

Product Name: Getaway

Model: 4198/01

Colour: Parchment

Content: 100% polyester

Soil/Stain Treatment/Backing : stain resistant finish

Fabric Width: 56"

Fire Rating: Passes California TB 117-2013 Cover Fabric Test

Durability: 100,000 Wyzenbeek

Cutting for Approval: Yes

Instructions: REFER TO STUDIO MUNGE INSTRUCTION BOOKLET FOR ALL DETAILS REGARDING PRODUCT AND MATERIALS


Website Link: pollackassociates

SPECIFICATIONS-EXAMPLE 3 -WALLCOVERING

STUDIO
MUNGE

MARX
RESIDENCE

WC-00X



Area:

Unit Type:

Supplier:

Manufacturer:

Item Description:

Product Name:

Model:

Colour:

Content:

Fabric Width:

Fire Rating:

Flame Certificate:

Cutting for Approval:

Instructions:

Website Link:

Architectural Alternatives

Unit

Metro Wallcoverings
<http://www.metrowallcoverings.com>
cbinder@metrowallcoverings.com
Charly Binder
2600 Steeles Avenue West, Unit B, Concord, Ontario, L4K 3C8, Canada
647.524.6737

Koroseal

Decorative Vinyl Wallcovering @Garage

Rememberance

2R21-18

Morning Dove

Vinyl
backing: Woven

52-54 in

Class A ASTM E-84

Required

Yes

REFER TO STUDIO MUNGE INSTRUCTION BOOKLET FOR ALL DETAILS REGARDING
PRODUCT AND MATERIALS

[koroseal](#)

IF YOU HAVE ANY QUESTION ABOUT THOSE SPECIFICATIONS,
PLEASE CONNECT WITH OUR RESOURCE SPECIALIST.

THANK YOU
太感谢了
GRACIAS
धन्यवाद
OBRIGADO
MERCI
اركش
Благодарность
ありがとう
DANKE
감사 해요
הודות
GRAZIE

