

# UNDERSTANDING AND SPECIFYING FABRIC&WALLCOVERING

STUDIO MUNGE EDUCATIONAL SEMINAR

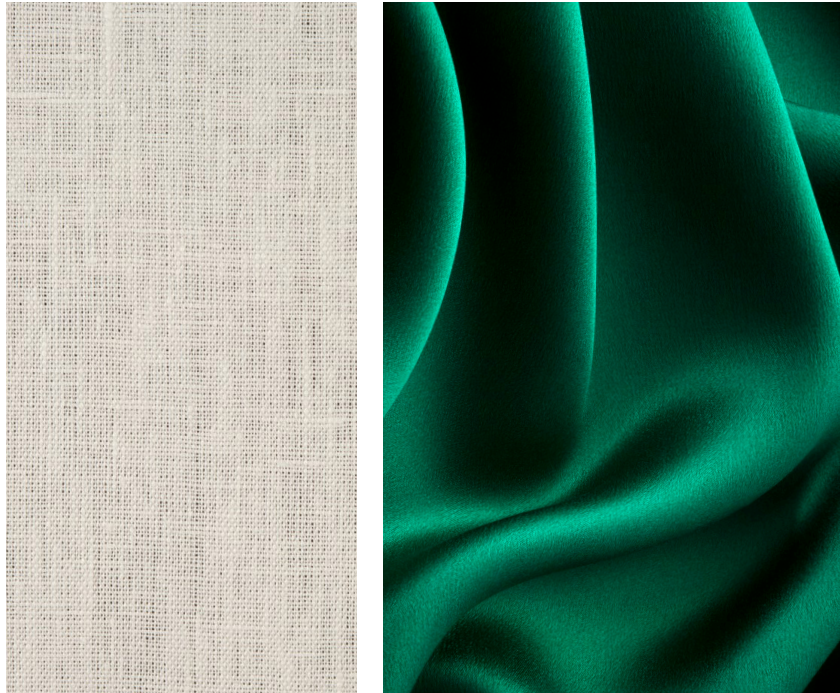
STUDIO  
MUNGE

# TYPES OF FABRIC & FIBRE

## RESIDENTIAL

### FIBRE

- Silk
- Bamboo Silk
- Cotton
- Linen
- Wool\*
- Jute
- Cashmere
- Mohair



### CONSTRUCTION

#### TYPE

- Velvet
- Woven
- Chenille
- Mohair
- Pattern
- Texture



PURELY AESTHETIC

## CONTRACT

### FIBRE

- Polyester
- Nylon
- Viscose
- Rayon
- Polypropylene(Outdoor)
- Acrylic (Outdoor)



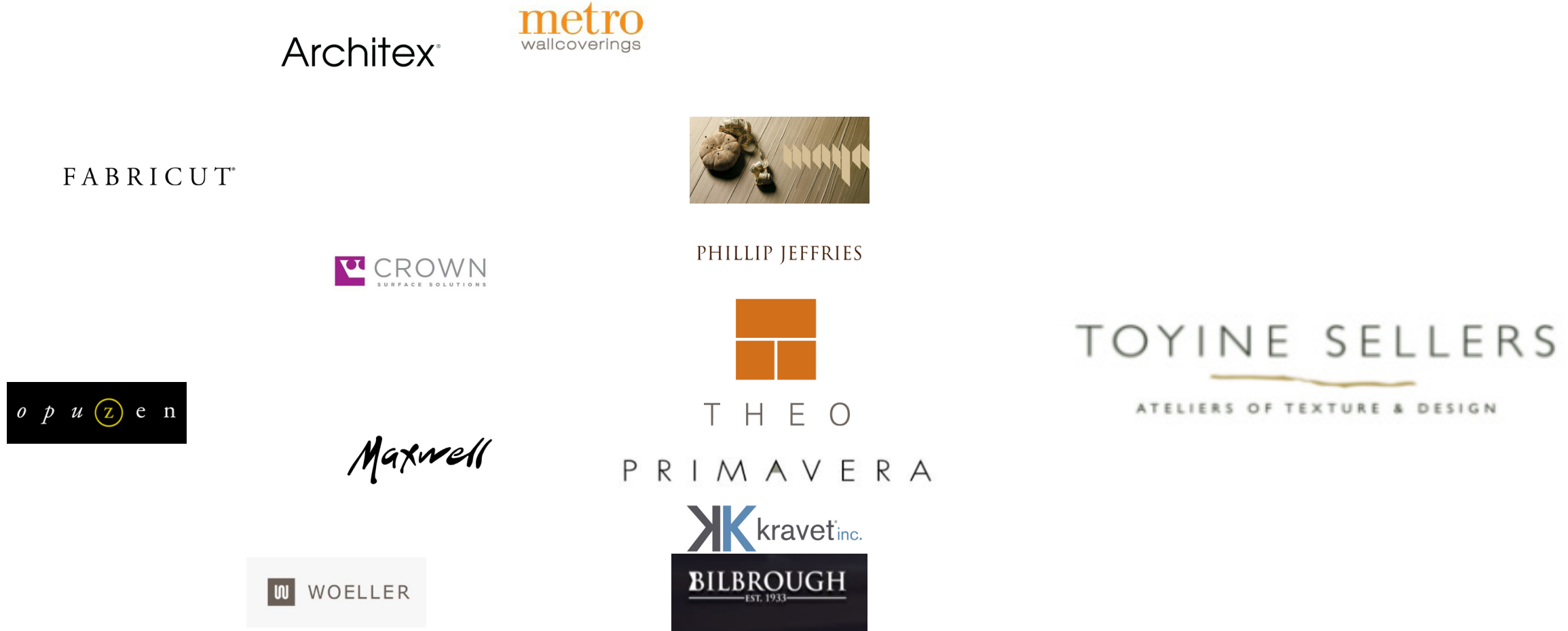
DURABILITY AND LONGESTIVEITY

**NOTE: Regardless of application, most fabric is blended, fabrics heavy on natural fibre is typically more residential than fabrics with artificial fibre, which leads toward contract**

LET'S NOT FORGET ABOUT WALLCOVERING!



# FABRIC AND WALLCOVERING SUPPLIERS



# HOW TO CHOOSE FABRICS/WALLCOVERING?

## ARCHITECTURAL

FB-Fabric for Millwork

WC-Wallcovering

## FFE

ACF-Accessory Fabrics

CGF-Casegood Fabrics

SGF-Soft Seating Fabrics

WTF-Window Treatment Fabrics

Tags above apply to both indoor and outdoor FF&E

## WHAT ARE MY NEEDS?

### -What kind of project am I working on?

(Home, Restaurant, Condo, Hotel, Restaurant, Outdoor)-this are the factors in understanding what type of fabric and wallcovering (eg contract vs residential)

### -What is my budget?

Budget parameters will be outlined by your project lead from client discussion

### -What is my lead time?

When the goods needed for your project? Project Leads will have this accounted for in schedule

### -What fabric am I using more of and less of?

This helps us balance level of fabric and we are using on a project, EG banquette fabric=high volume, lesser price point than accent fabric on pillow, which there is less of....

### -Know your hero fabrics! Where do we embellish? What is our focus?

Pillows? Trim? Heavy Texture? What are we evoking through the use of fabric

Are we embellishing an accent wall with a high end wallcovering-small area, big impact?

# COMPLIANCE AND DURABILITY

## **CONTRACT-Furniture and Unadhered Panelling**

### **FIRE CODES-North America**

#### **UPHOLSTERY CAL TB 117**

(California specific-accepted North America wide)

#### **UPHOLSTERY UFAC Class 1/NFPA 260**

(North America wide)

#### **DRAPERY NFPA 701**

(United States Specific)

#### **DRAPERY CAN ULC-S 109**

(Canada Specific-fairly new)

## **CONTRACT-Millwork Adhered Panelling(Wallcovering)**

### **FIRE CODES-North America**

#### **CLASS ASTM E-84 CLASS A TYPE II**

NOTE: For wallcovering, if actually product is not fire rated, fire rating backing MAY be accepted. AOR to provide direction and clarity of this before selection to be made and presented internally/externally

**NOTE: If drapery is not fire rated or durable and need a protective coating to make it pass compliance, there is a potential that the hand of the fabric may be compromised. Confirm with lead before proposing any non-rated/protected fabrics to develop game plan. Suppliers can support with this and getting their feedback on change in fabric is key to moving forward if you go this route!**

### **DURABILITY-SM INTERNAL STANDARD**

#### **SEATING/CASEGOOD**

#### **UPHOLSTERY FABRIC-50,000 Double Rubs**

\*if brand standard present for project and state their required double rub, it supersedes our standard

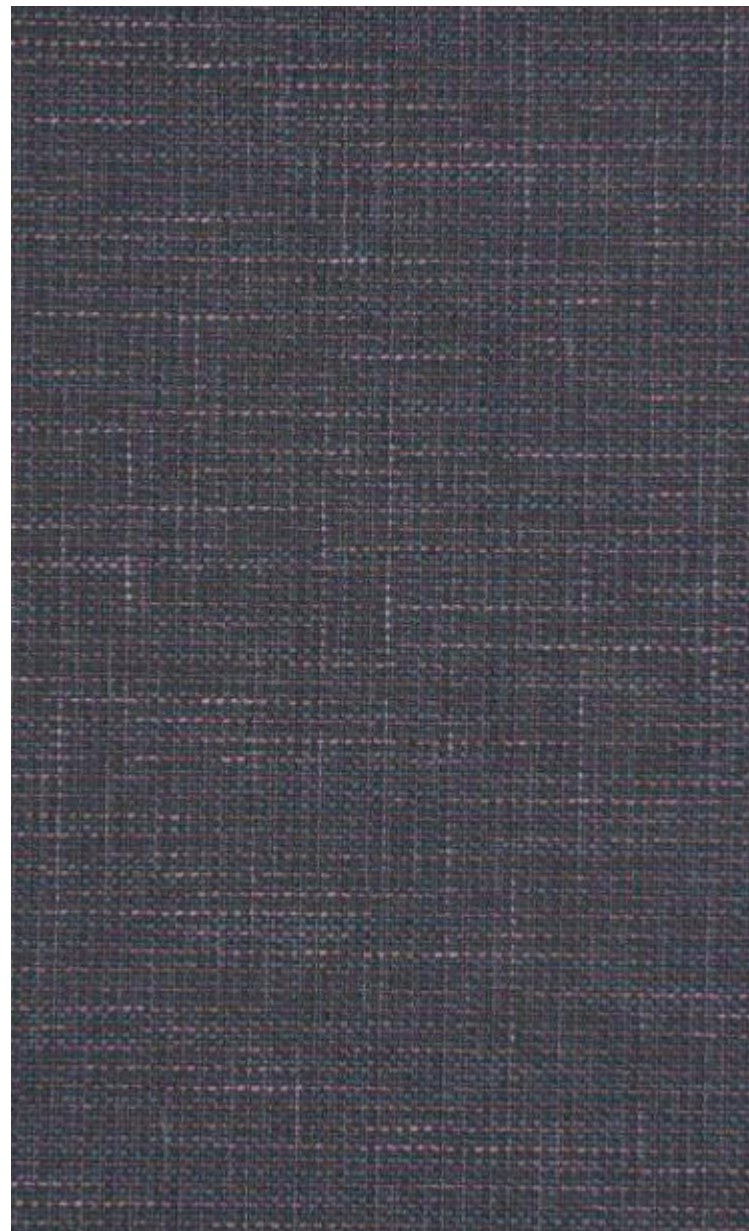
#### **ACCENT FABRICS-20,000 Double Rubs**

\*if brand standard present for project and state their required double rub, it supersedes our standard

\*Residential Fabrics still require durability, but not fire code, lead to confirm durability count per clients expectation

# INTEPERETTING SPECIFICATION

## FABRIC



<b>Product Number</b> 9316623	<b>Content</b> 64% Acrylic, 36% Polyester
<b>Uses</b> Contract Upholstery	<b>Application</b> Fabric
<b>Width</b> 55.00 in (139.70 cm)	<b>Vertical Repeat</b> None
<b>Colors</b> Blue, Lavender / Purple	<b>Horizontal Repeat</b> None
<b>Scale</b> Not Available	<b>Fire Codes</b> UFAC Class I / NFPA 260
<b>Railroaded</b> Not Railroaded	<b>Categories</b> Easy To Clean, Fibreguard, Wovens, Environment Plus / Green
<b>Finish</b> Fibreguard	<b>Design Types</b> Texture Plain
<b>Backing</b> None	<b>Collection</b> None
<b>Book</b> Foundations Fibreguard Performance	<b>Book Date</b> 06/2018
<b>Styles</b> None	<b>Double Rubs</b> Exceeds 40,000 Double Rubs Wyzenbeek Method
<b>Cleaning Codes</b> WW	<b>Country of Origin</b> Turkey
<b>Additional Product Notes</b> Fibreguard, Easy To Clean Finish, Passes 35,000 Martindale Tst, Oeko Tex Standard 100, Ca Tb 117-2013, Exclusive Pattern, Eco /	<b>Brand</b> Fabricut Contract

## WALLCOVERING



### specifications

**Designer:** Stacy Garcia | New York  
**Material:** Vinyl  
**Backing:** Non-woven  
**Brand:** Stacy Garcia | New York  
**Pattern Match:** Random Match, Reverse Hang  
**Product Type:** Wallcovering  
**Roll Width:** 52-54 in (132-137 cm)  
**Fire Rating:** Class A ASTM E-84  
**Vertical Repeat:** N/A  
**Horizontal Repeat:** N/A

For more detailed information see technical specifications.

# SPECIFICATIONS-EXAMPLE 1-FABRIC

HOTEL



**Issue Date:** Oct-15-21  
**Issue Type:** 90% Construction Documentation  
**Area:** 600 MUR  
**Supplier:** Anthony Inc.  
<https://www.anthonyinc.net/>  
anthony@anthonyinc.net  
2041 W. Grand Ave, Chicago, Illinois, 60612, United States  
**Manufacturer:** Opuzen  
**Item Description:** Ottoman Seat Upholstery  
**Product Name:** Mohair  
**Model:** 6100-0027  
**Colour:** Green  
**Content:** 100% Mohair  
**Soil/Stain Treatment/Backing:** Stain Treatment  
:  
**Fabric Width:** 54"  
**Fire Rating:** UFAC Class I, CAL TB 117-2013, NFPA 260  
**Durability:** 100,000 Wyzenbeek  
Double Rubs  
**Flame Certificate:** Required

**Cutting for Approval:** Yes  
**Instructions:** REFER TO STUDIO MUNGE INSTRUCTION BOOKLET FOR ALL DETAILS REGARDING PRODUCT AND MATERIALS  
**Product Docs:** [pouf\\_upholstery](#)  
10/15/2021

Page 1 of 2



# SPECIFICATIONS-EXAMPLE 2 -UPHOLSTERED PANEL

MUNGE

37 11 NYC  
HOTEL

FB-300



**Issue Date:** Oct-04-21  
**Issue Type:** 90% Construction Documentation  
**Area:** Public Space / 300 Third Floor / Meeting Spaces  
**Supplier:** Primavera Interior Furnishing LTD  
<http://www.primavera.ca>  
[wendy@primavera.ca](mailto:wendy@primavera.ca)  
160 Pears Ave, Toronto, Ontario, M5R 3P8, Canada  
**Manufacturer:** Pollack  
**Item Description:** Wall Panel Fabric @ Meeting Space  
**Product Name:** Getaway  
**Model:** 4198/01  
**Colour:** Parchment  
**Content:** 100% polyester  
**Soil/Stain Treatment/Backing:** stain resistant finish  
:  
**Fabric Width:** 56"  
**Fire Rating:** Passes California TB 117-2013 Cover Fabric Test  
**Durability:** 100,000 Wyzenbeek  
**Cutting for Approval:** Yes  
**Instructions:** REFER TO STUDIO MUNGE INSTRUCTION BOOKLET FOR ALL DETAILS REGARDING PRODUCT AND MATERIALS  
**Website Link:** [pollackassociates](http://pollackassociates)

LINK REQUIRED

# SPECIFICATIONS-EXAMPLE 3 -WALLCOVERING

STUDIO  
MUNGE

MARX  
RESIDENCE

WC-00X



**Area:** Architectural Alternatives  
**Unit Type:** Unit  
**Supplier:** Metro Wallcoverings  
<http://www.metrowallcoverings.com>  
[cbinder@metrowallcoverings.com](mailto:cbinder@metrowallcoverings.com)  
Charly Binder  
2600 Steeles Avenue West, Unit B, Concord, Ontario, L4K 3C8, Canada  
647.524.6737  
**Manufacturer:** Koroseal  
**Item Description:** Decorative Vinyl Wallcovering @Garage  
**Product Name:** Rememberance  
**Model:** 2R21-18  
**Colour:** Morning Dove  
**Content:** Vinyl  
backing: Woven  
**Fabric Width:** 52-54 in  
**Fire Rating:** Class A ASTM E-84  
**Flame Certificate:** Required  
**Cutting for Approval:** Yes  
**Instructions:** REFER TO STUDIO MUNGE INSTRUCTION BOOKLET FOR ALL DETAILS REGARDING PRODUCT AND MATERIALS  
**Website Link:** [koroseal](http://koroseal.com)

IF YOU HAVE ANY QUESTION ABOUT THOSE SPECIFICATIONS,  
PLEASE CONNECT WITH OUR RESOURCE SPECIALIST.

THANK YOU  
太感谢了  
GRACIAS  
धन्यवाद  
OBRIGADO  
MERCİ  
اركش  
Благодарность  
ありがとう  
DANKE  
감사 해요  
הודות  
GRAZIE