

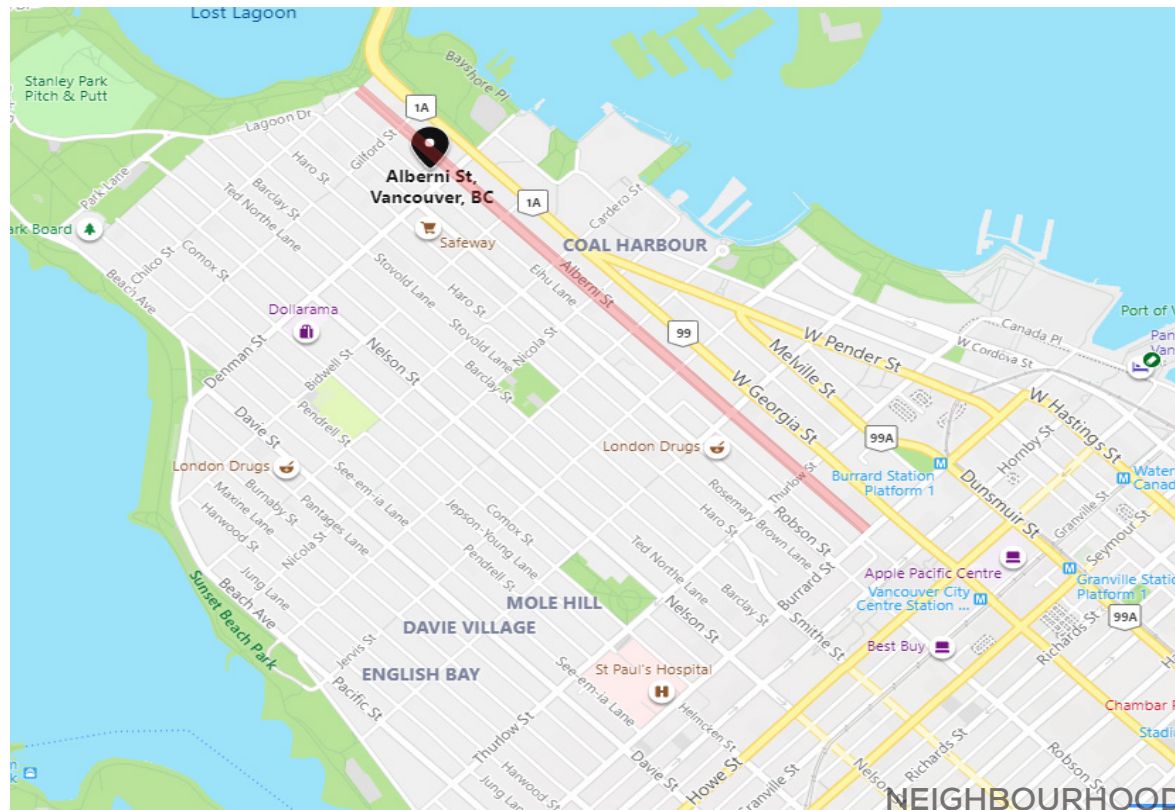
# 1650 ALBERNI

CONCEPT INSPIRATIONAL PRESENTATION  
JUNE 10<sup>TH</sup>, 2021

**LANDA**  
GLOBAL PROPERTIES

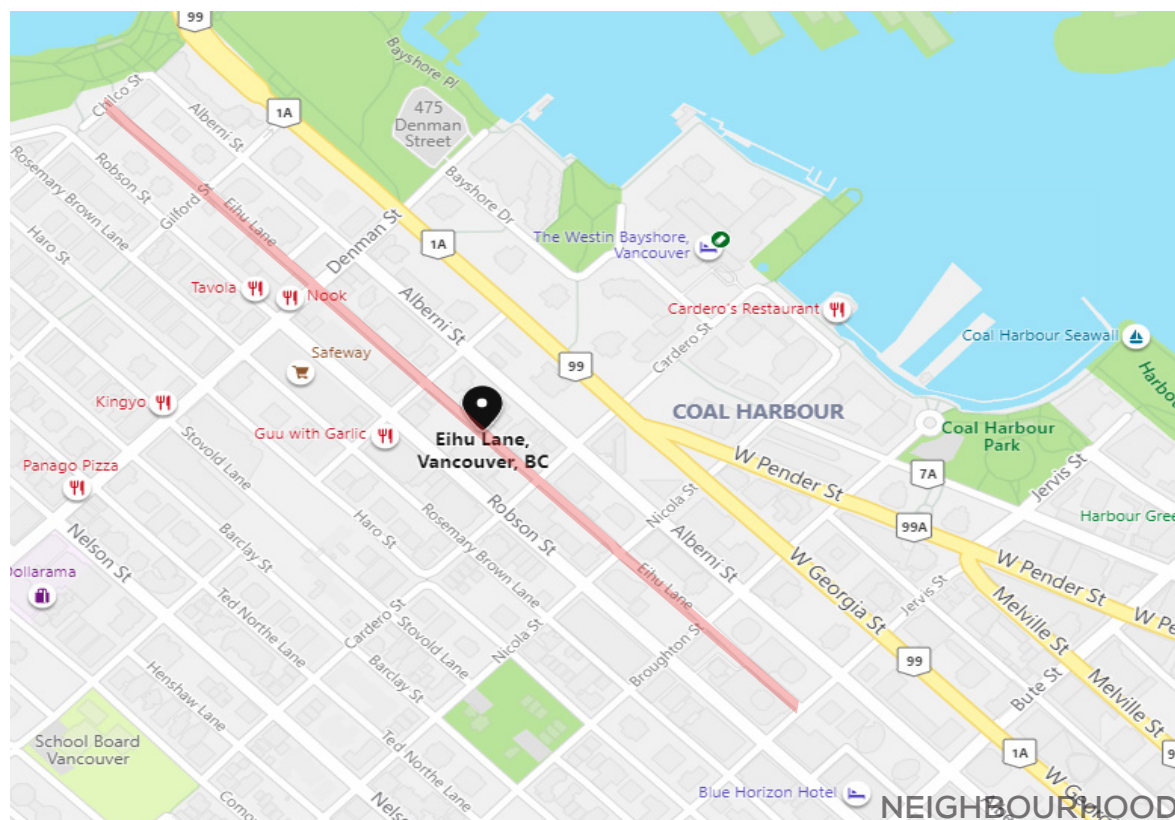
ASIA  
STANDARD  
AMERICAS

STUDIO  
MUNGE



## ALBERNI

Alberni Street is a road in Downtown Vancouver, British Columbia, considered a non-descript commercial street. In the 2010s the street transformed into a center for fine restaurants, as well as a recent influx of high-end luxury retail stores, beginning with a flagship store for De Beers diamonds that opened in 2013, and now including flagship stores and boutiques for numerous other luxury brands. Alberni Street is especially popular with wealthy tourists from Asia who are drawn to the street while staying at nearby landmark, luxury 5-star hotels such as the Hotel Vancouver, Trump International Hotel Vancouver, and the Shangri-La Hotel.

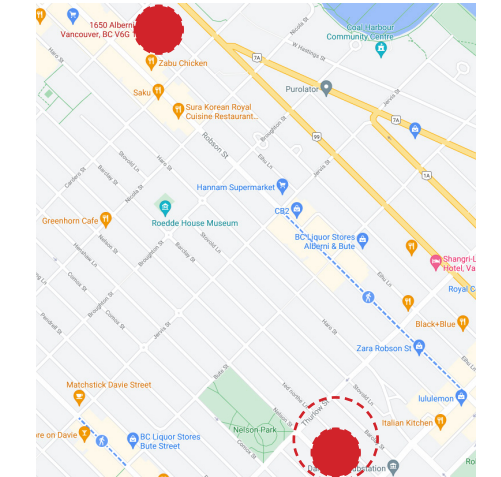
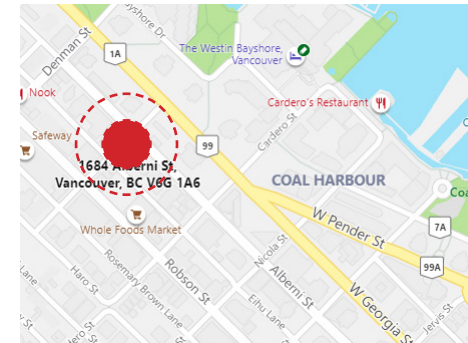
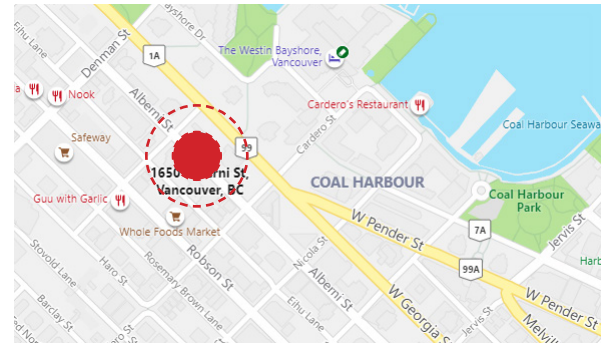
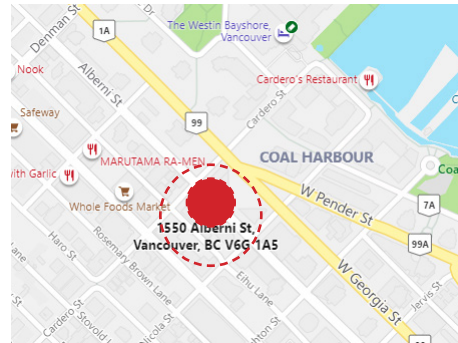
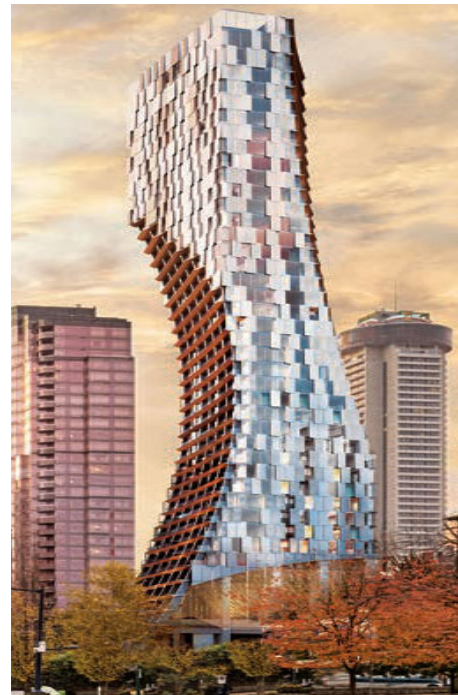


## EIHU LANE

Located between Alberni and Robson streets, runs from Burrard Street to west of Bute Street, and from Jarvis to Chilco streets. Named after Hawaiian settler Eihu, who was one of original settlers at Kanaka Ranch on the south shore of Coal Harbour near Stanley Park.



# SITE STUDY UPCOMING CONDOMINIUMS IN THE NEIGHBOURHOOD



## ALBERNI BY KENGO KUMA

LOCATION: 1550 Alberni St, Vancouver

ARCHITECT: Kengo Kuma Architects and Associates, Merrick Architecture - Borowski Sakumaoto, Fligg McIntyre Ltd.

DEVELOPER: Westbank Corp.

WEBSITE: <http://alberniykuma.com/>  
<https://westbankcorp.com/body-of-work/alberni-by-kuma>

## 1650 ALBERNI CONDO

LOCATION: 1650 ALBERNI

ARCHITECT: SOM, IBI

WEBSITE: N/A

## 1684 ALBERNI

LOCATION: 1668 -1684 Alberni Street, Vancouver BC

ARCHITECT: Bing Thom Architects (now Revery Architecture)

DEVELOPER: Westbank Corp.

WEBSITE: <https://vancouver4life.com/1684-alberni-westbank/>

## THE BUTTERFLY

LOCATION: 1019 Nelson Street, Vancouver BC

ARCHITECT: Bing Thom Architects (now Revery Architecture)

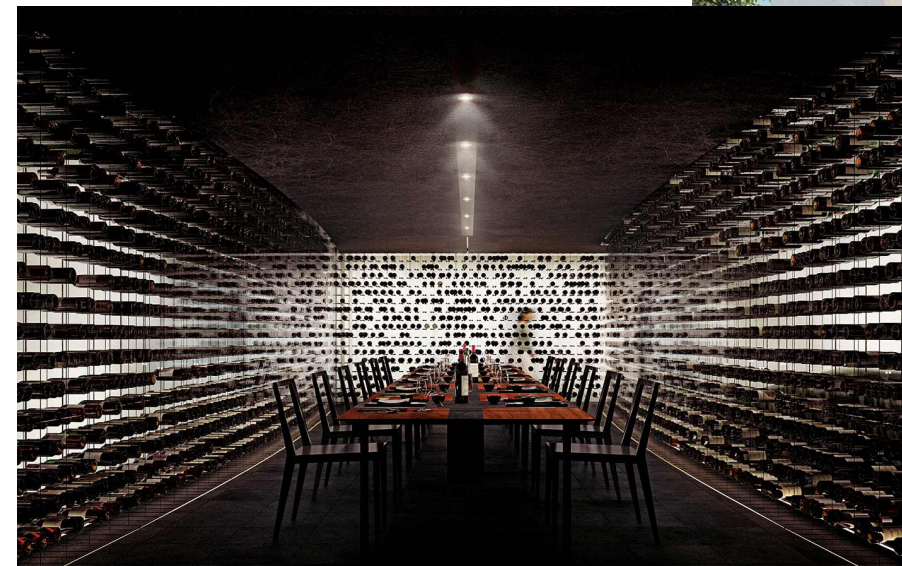
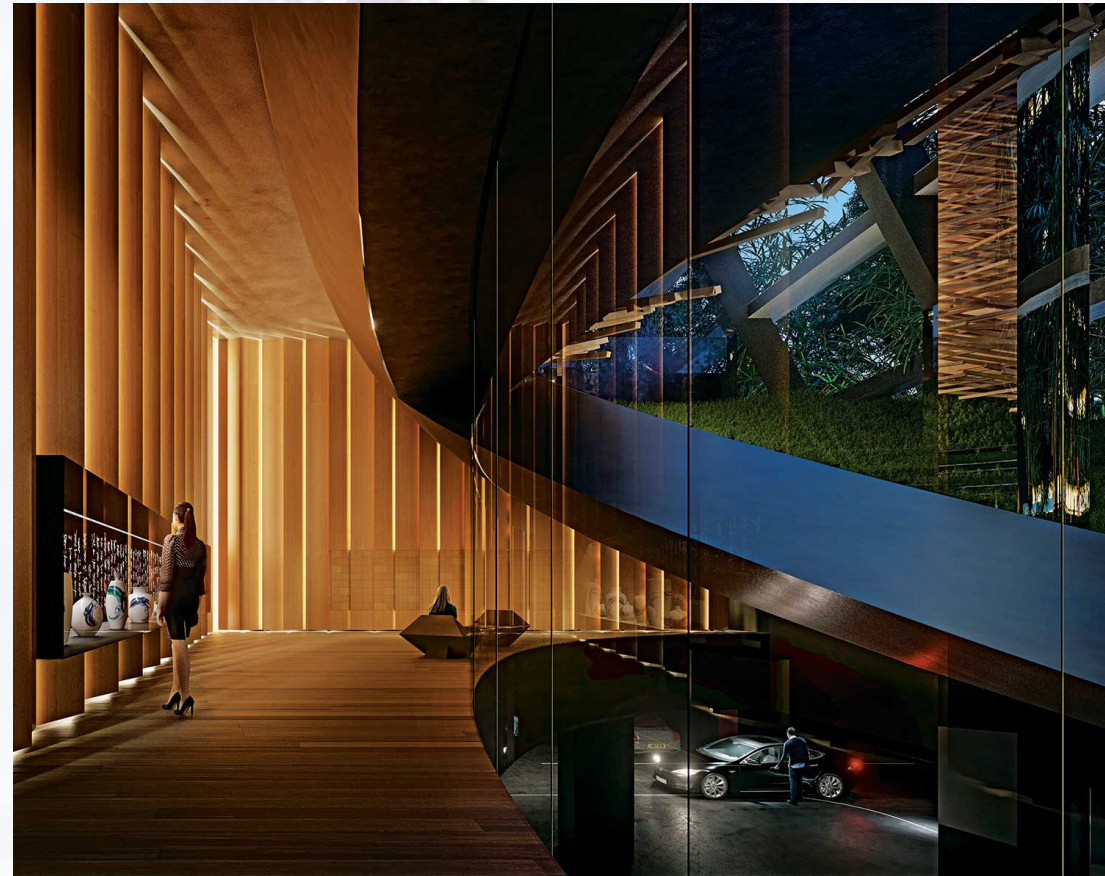
DEVELOPER: Westbank Corp.

WEBSITE: <https://westbankcorp.com/body-of-work/the-butterfly>





SITE STUDY | 1550 ALBERNI



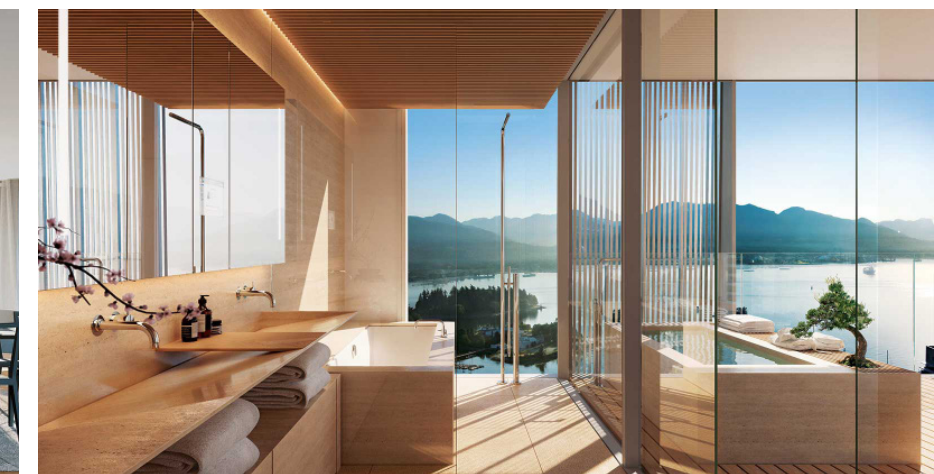
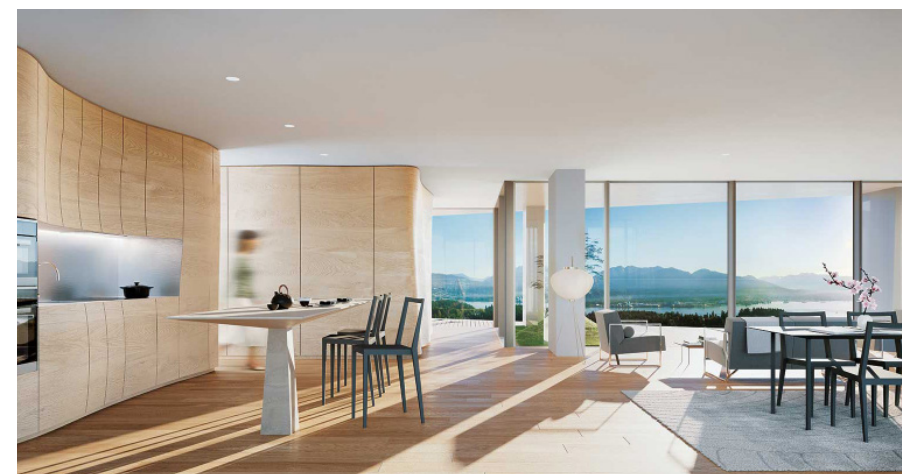
ALBERNI by KENGO KUMA  
1550 Alberni Street, Vancouver

CONCEPT

A project that on one hand instantly resonates as a sculptural moment that arrests you, and on the other hand brings layer upon layer of texture that you can only discover as you journey through the building; each visit revealing a sumptuous detail or moment that deepens your experience.

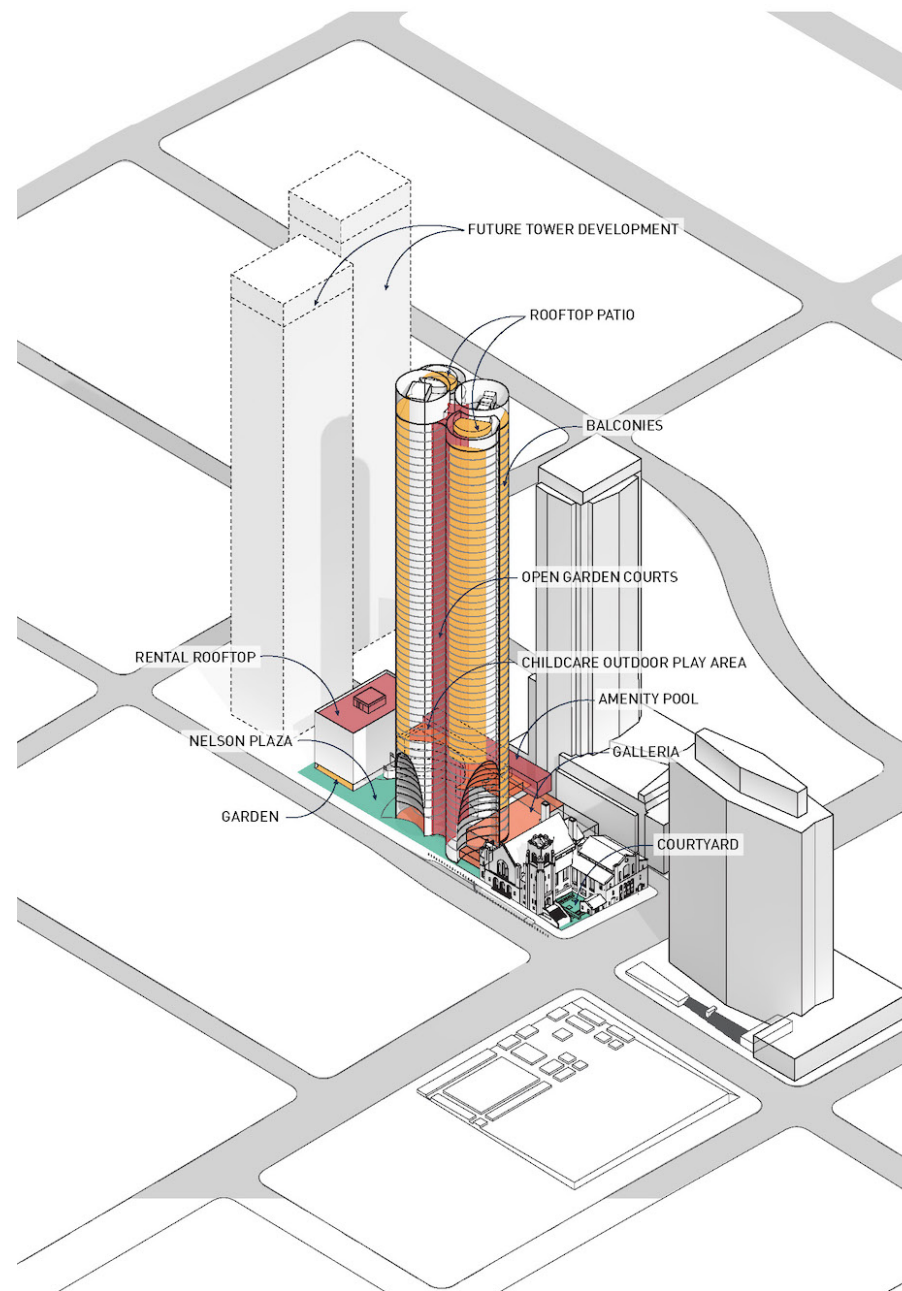
NUMBER OF FLOORS  
NUMBER OF SUITES  
AMENITIES

- 43
- 188
- Japanese Moss Garden with a Performance Space
- Swimming Pool with Wood Structure
- Sauna
- Fitness Gym
- Gallery
- Play Area
- Wine Room
- Listening Room
- Waketokuyama Japanese Restaurant





SITE STUDY | 1019 NELSON ST.



The Butterfly at Burrard and Nelson  
1019 Nelson Street, Vancouver

CONCEPT

Inspired by both natural and man-made sculptural forms, this elegant design celebrates the art of form-making in architecture.

NUMBER OF FLOORS  
NUMBER OF SUITES  
AMENITIES

39  
94  
37-space daycare facility  
Vancouver's largest Community Amenity Contribution to date: \$91,305,225. Includes a landscaped public plaza, replacing every lost tree with two-and-a-half- new trees

Residential Tower:

- Exterior courtyard, tree planter on every third floor
- Fitness Centre
- Lounge
- Rooftop Terrace
- 50-metre Olympic length pool

Eight-story Rental Building:

- Indoor lounge with a kitchen
  - Landscaped rooftop terrace with a playground
- Italian crafted kitchen by Arclinea  
Miele and Sub-zero kitchen appliance package

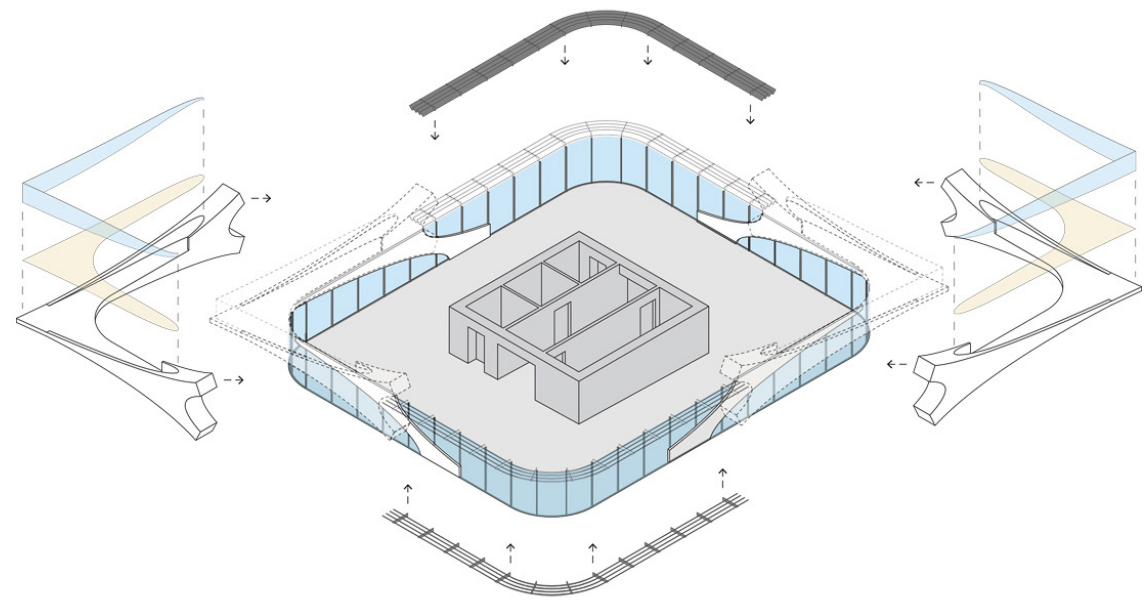
FEATURE AND HIGHLIGHT

5





SITE STUDY | 1668 - 1684 ALBERNI



1684 ALBERNI - CONCEPT STATUS

1668 -1684 Alberni Street, Vancouver BC

CONCEPT

Inspired by natural and man made sculptural forms, 1684 Alberni by Westbank design celebrates the art of form-making in architecture. The form of development is contingent on a continuous architectural spine that runs up the middle of each of the four facades.

NUMBER OF FLOORS

39

NUMBER OF SUITES

94

AMENITIES

- Reflecting pool with pedestrian bridge
- Large Multi-purpose room
- Spa (private massage and change rooms)
- Outdoor dining area with kitchen, barbecue
- Outdoor children's play zone, social area, bench & patio



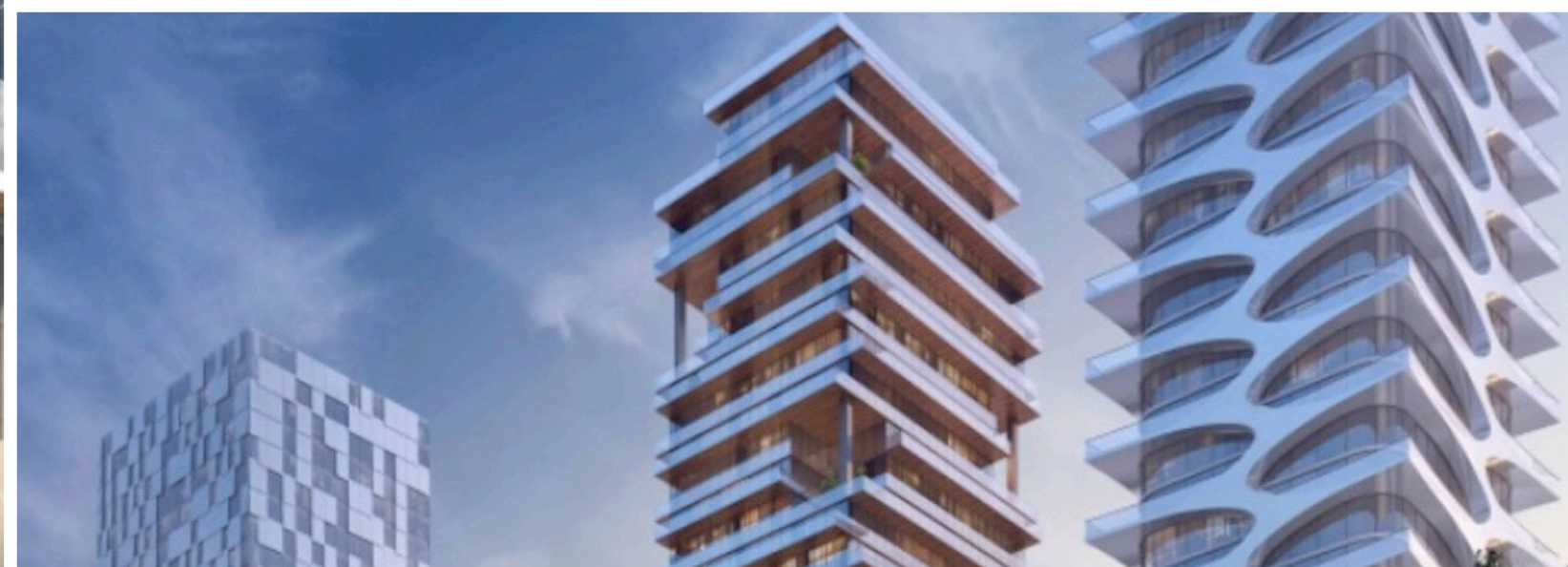


SITE STUDY 3D MAP OF 1650 ALBERNI



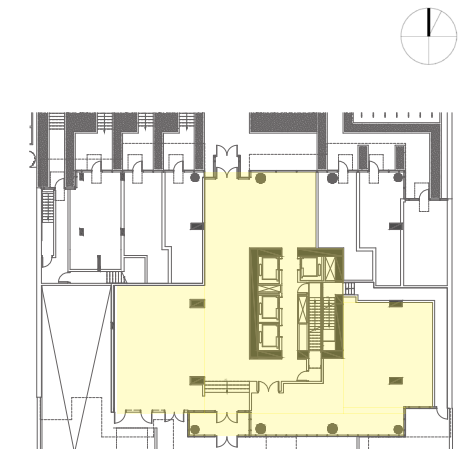
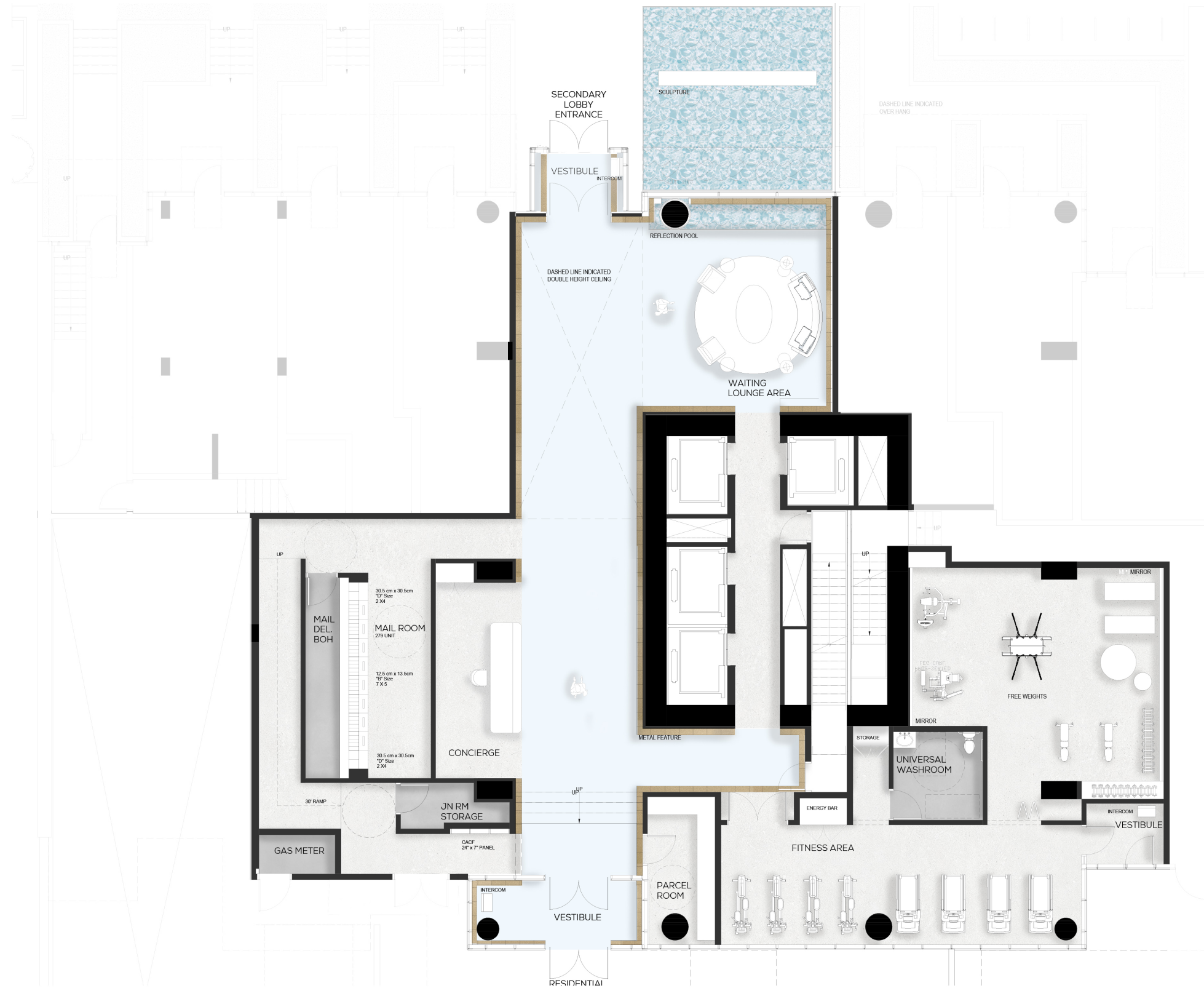


ARCHITECTURE OF 1650 ALBERNI





BUILDING GROUND FLOOR | OPTION 1





BUILDING CONCEPT 1 | JEWEL BOX | LOBBY



ART



CONCRETE - STONE



ARCHITECTURE FORM



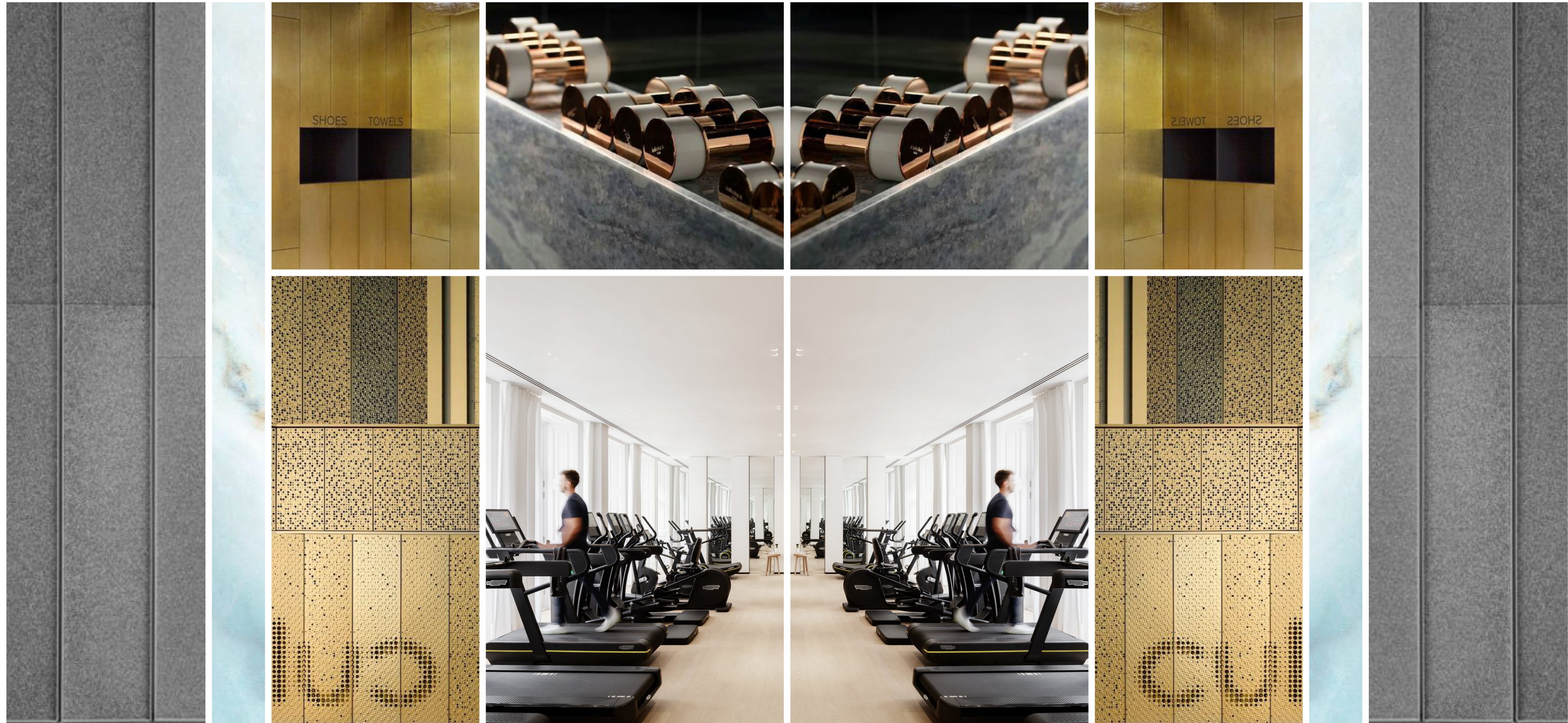
CONCRETE - STONE



ART



BUILDING CONCEPT 1 | JEWEL BOX | FITNESS



CONCRETE

STONE

METAL PANELS

FUNCTION

METAL PANELS

STONE

CONCRETE

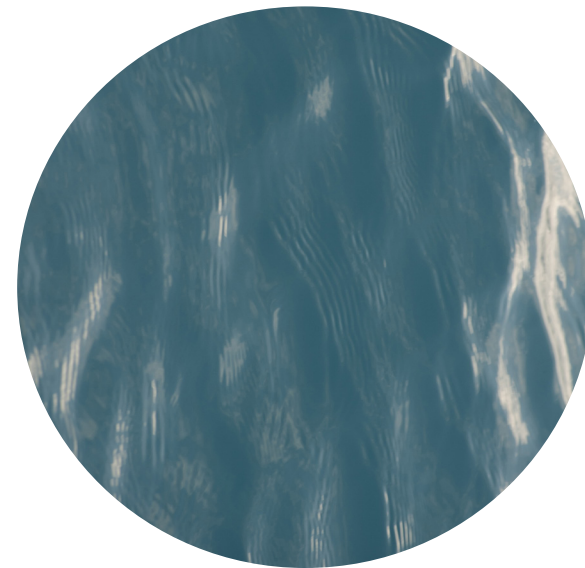




METAL



CONCRETE



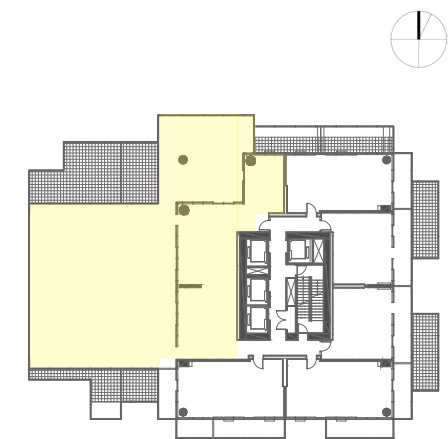
WATER



STONE



BUILDING 7TH FLOOR AMENITY



OUTDOOR AMENITY:  
3257.4 SQ.F

INDOOR AMENITY:  
1242.8 SQ.F



BUILDING CONCEPT 1 | JEWEL BOX | AMENITY LOUNGE



ART

STONE

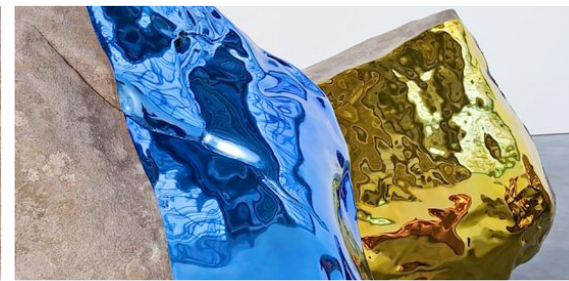
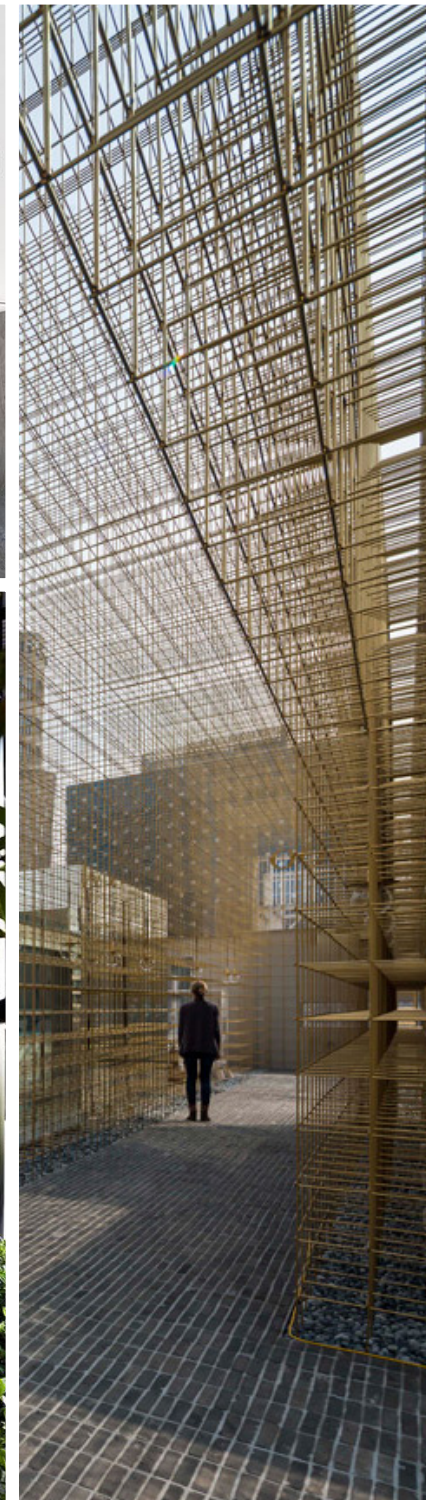
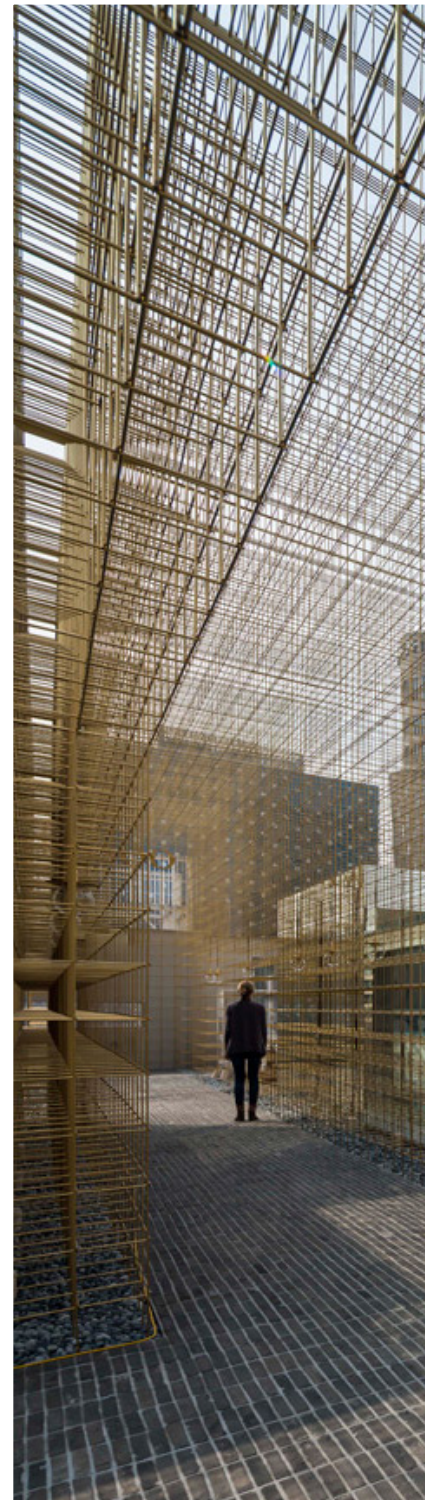
ARCHITECTURE FORM

STONE

ART



BUILDING CONCEPT 1 | NATURAL MATERIALS | OUTDOOR AMENITY



ART

FUNCTION

ARCHITECTURE FORM

LANDSCAPE

ART



BUILDING CONCEPT 1 | JEWEL BOX | KIDS AREA



CLIMBING

FUN

ARCHITECTURE FORM

FUN

CLIMBING





METAL



CONCRETE



GREEN



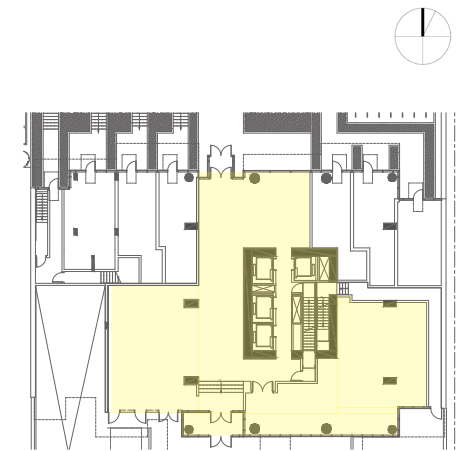
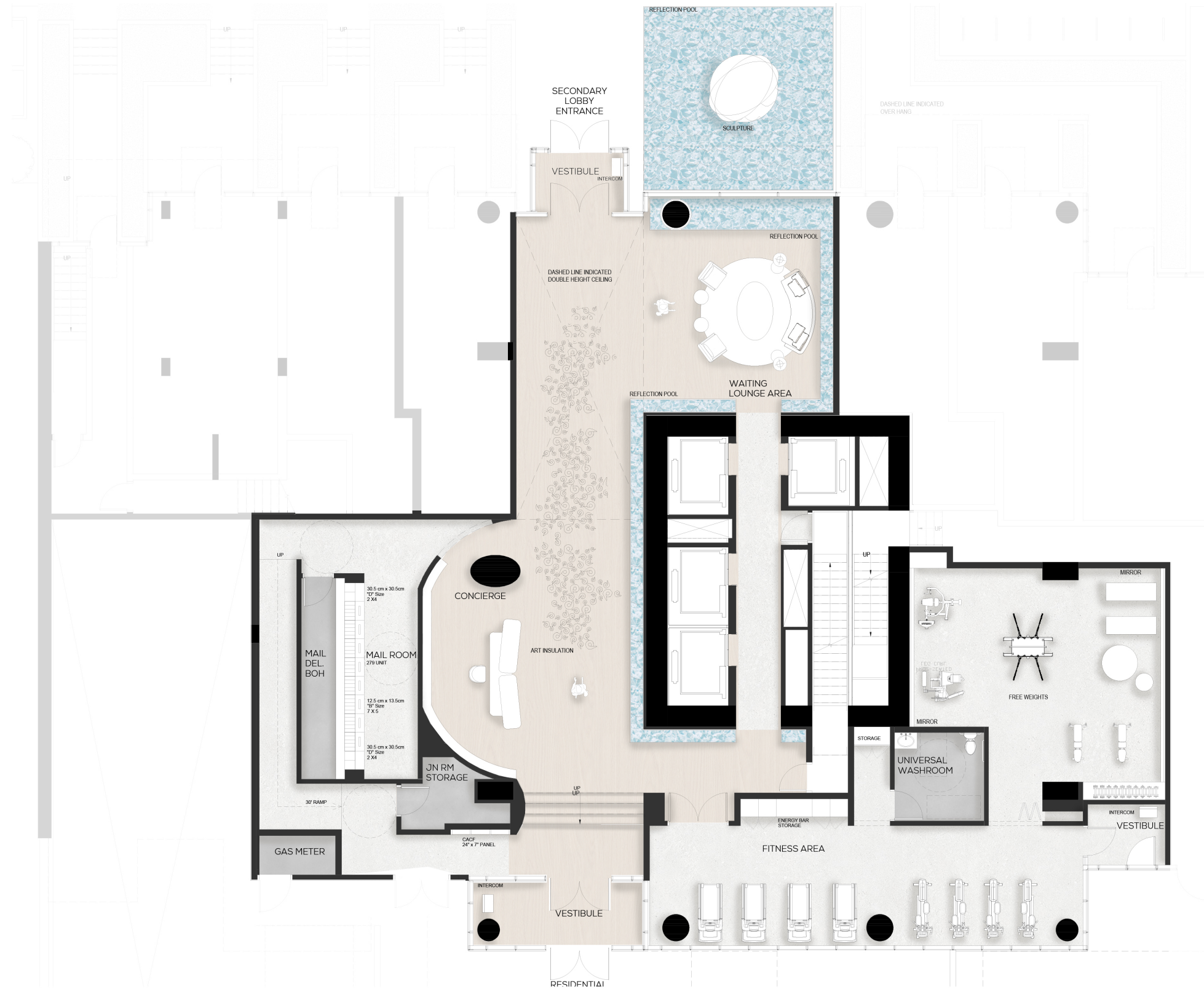
WOOD



STONE

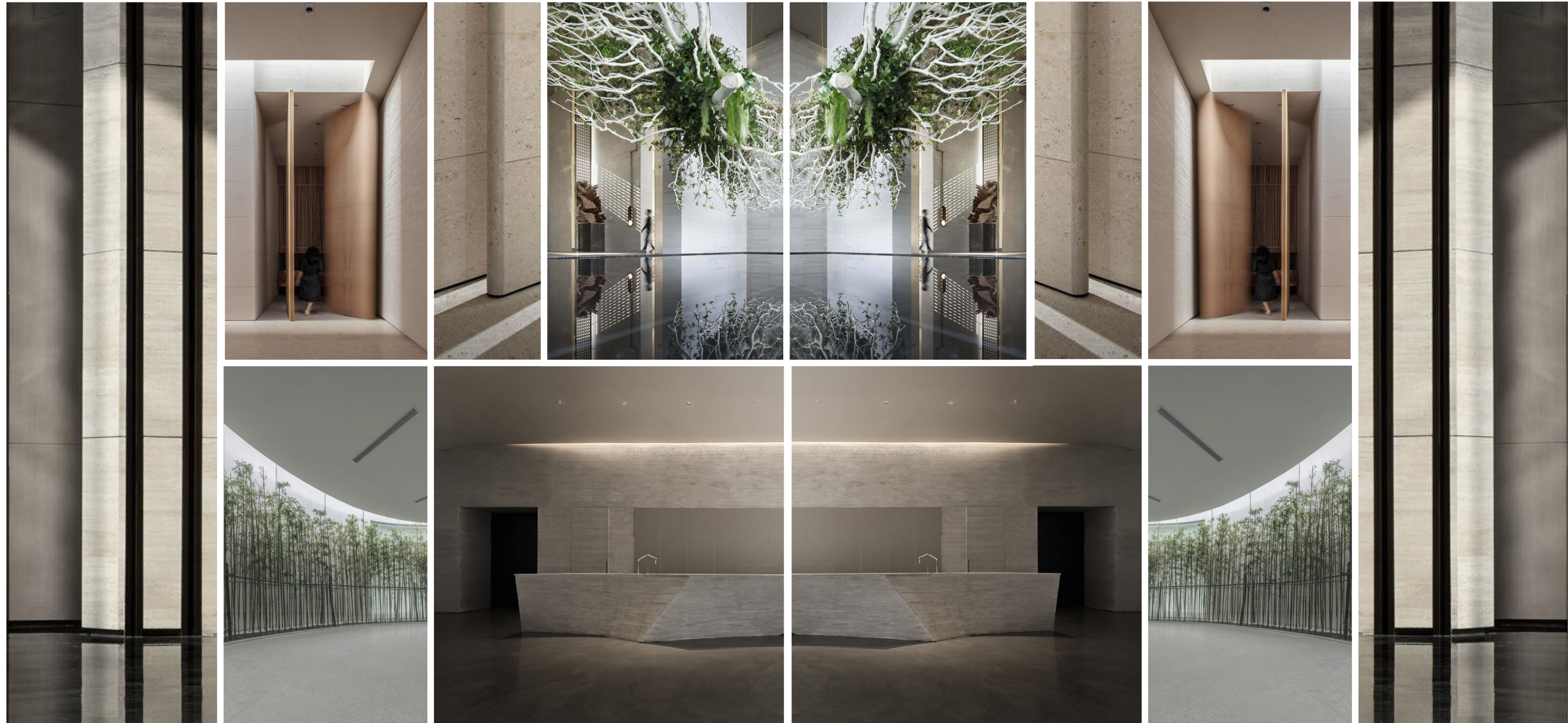


BUILDING GROUND FLOOR | OPTION 2





BUILDING CONCEPT | NATURAL MATERIALS | LOBBY



STONE - WATER

ART

ARCHITECTURE FORM

ART

STONE - WATER





STONE - WATER

ARCHITECTURE FORM

STONE - WATER

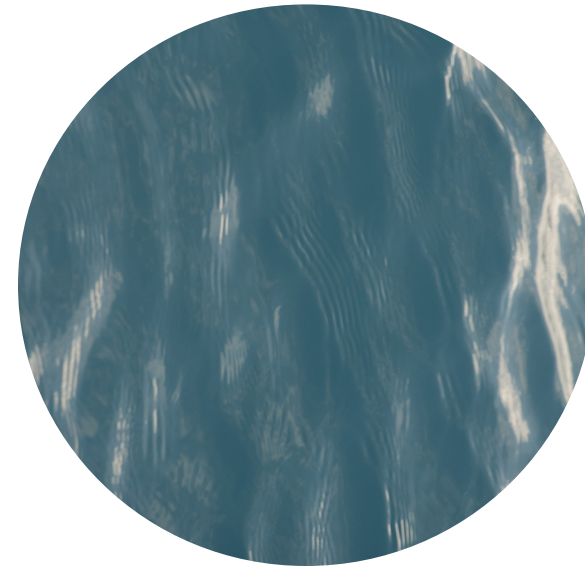




WOOD



METAL



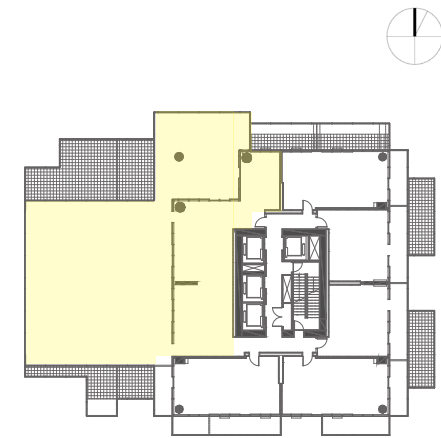
WATER



STONE



BUILDING 7TH FLOOR AMENITY



OUTDOOR AMENITY:  
3257.4 SQ.F

INDOOR AMENITY:  
1242.8 SQ.F





ART

CONCRETE - STONE

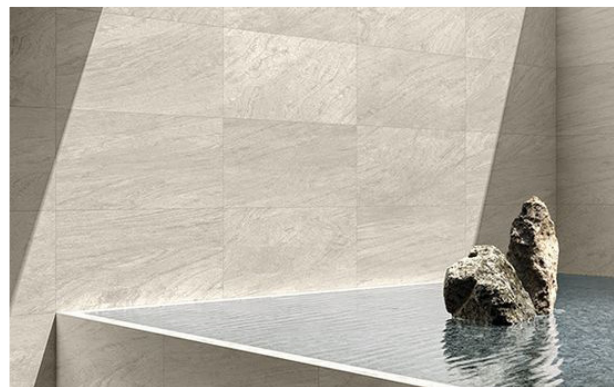
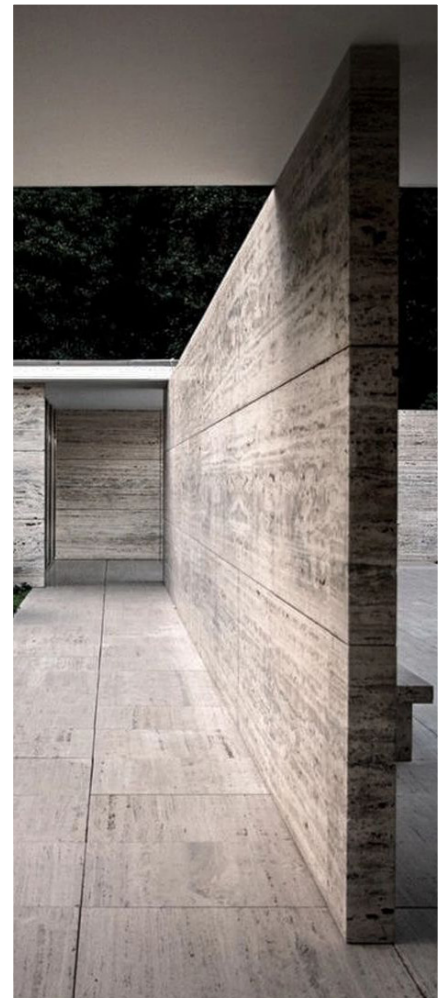
ARCHITECTURE FORM

CONCRETE - STONE

ART



BUILDING CONCEPT 1 | NATURAL MATERIALS | OUTDOOR AMENITY



STONE

COOK

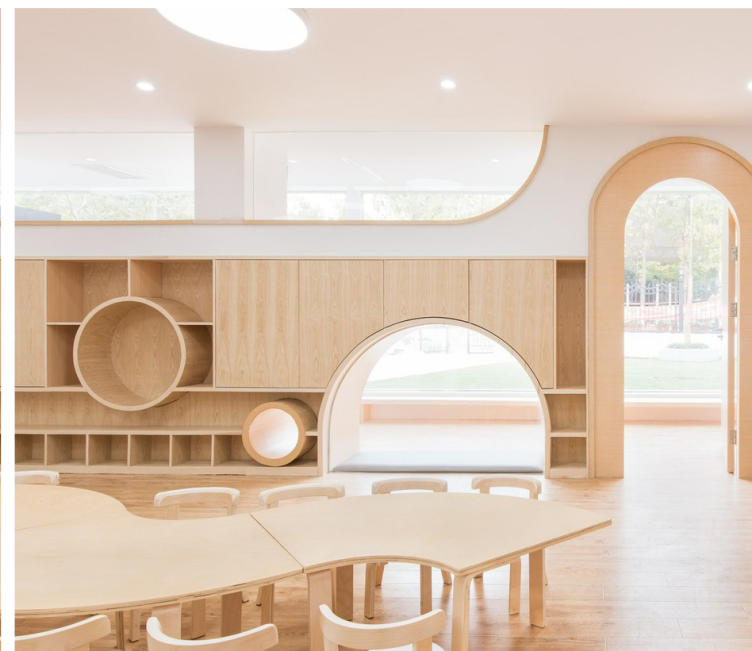
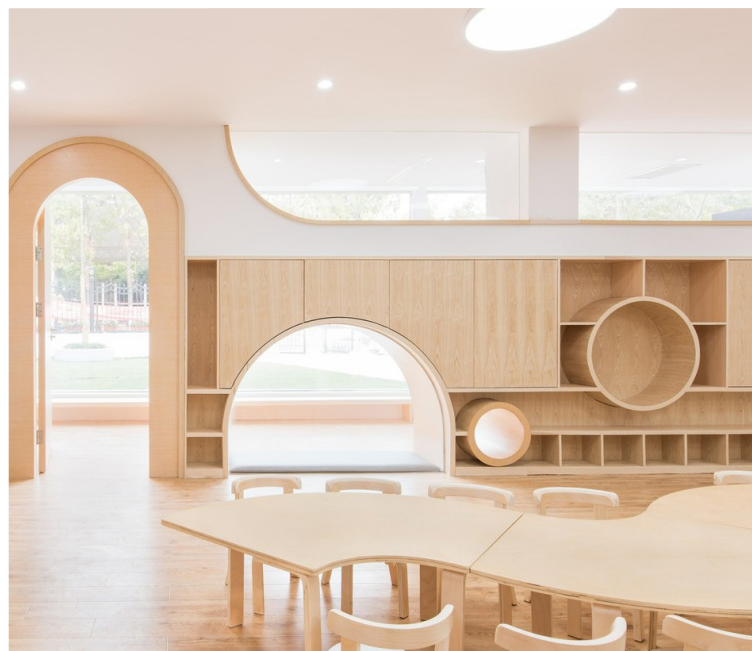
ARCHITECTURE FORM

COOK

STONE



BUILDING CONCEPT 1 | NATURAL MATERIALS | KIDS AREA



LANDSCAPE

CURACITY

ARCHITECTURE FORM

CURACITY

LANDSCAPE





WOOD



METAL



GREEN



STONE



STONE



THANK YOU!