

# 1650 ALBERNI

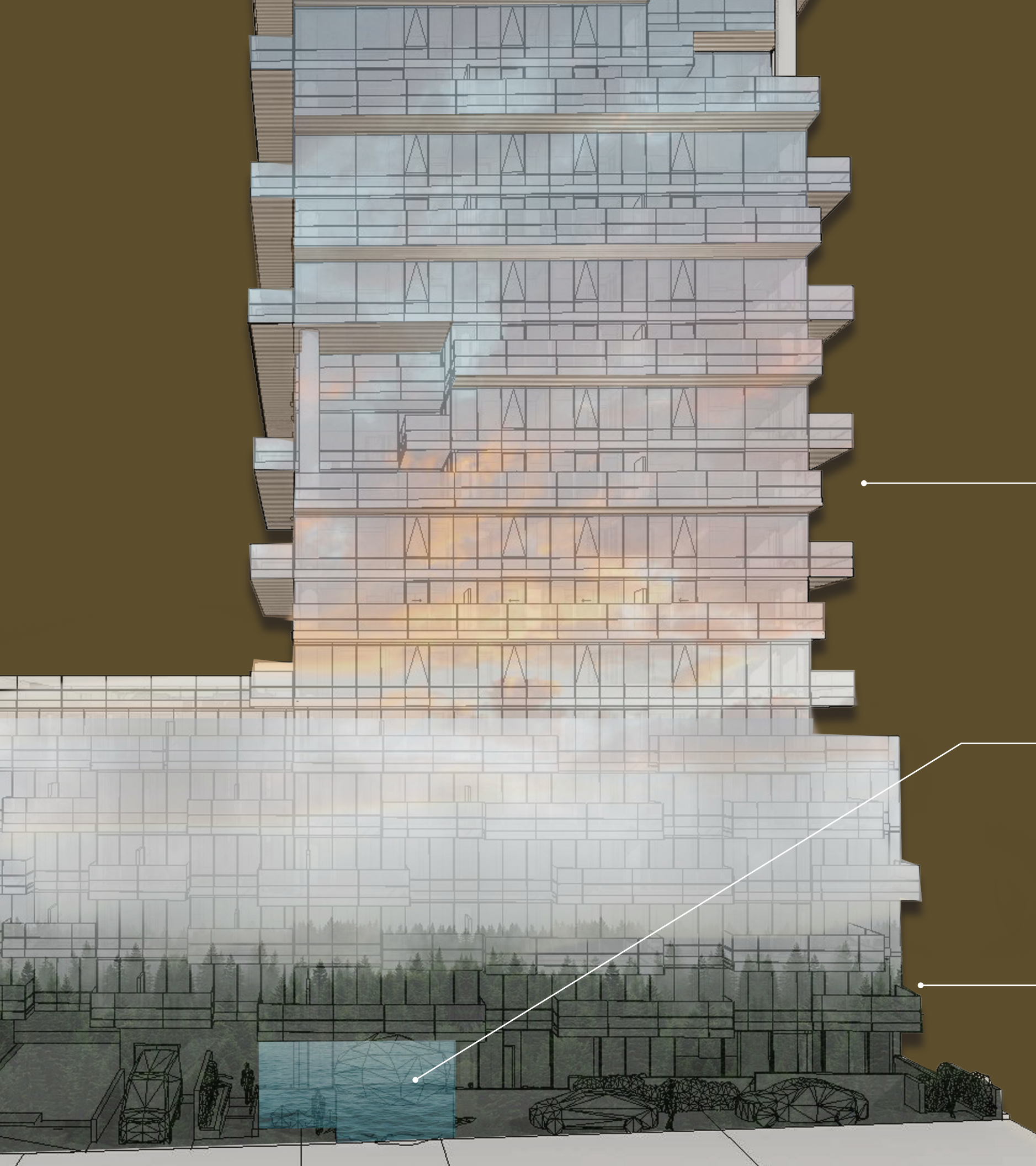
KITCHEN & BATH PRESENTATION  
MAY 25<sup>TH</sup>, 2022



**LANDA**  
GLOBAL PROPERTIES

STUDIO  
MUNGF





THE THREE REALMS OF ARCHITECTURE BY  
**SOM**

**SKY**

Architectural glazing reflects the sky and breathtaking views the site has to offer, blending in with nature

**WATER**

Emerging with the Vancouver Harbour, the building art installation brings the water element to site

**GROUND**

A symbol of stability and being properly anchored. Through seasons of change, the earth element adapts beautifully





#### COURTYARD

A community that represents growth, gathering and harvesting.

#### PILLER COLUMNS

Establish a connection with all dwelling units, linking everything together as a whole

#### LAYERS

Unfolding unique stories at each level with different interactions and dynamics

#### QUADRILATERAL GEOMETRY

Embracing all 4 compass natural beauty. Staying true to surrounding context

#### LUSCIOUS LANDSCAPE

Merging the surrounding natural beauty with functional landscape to provide privacy for residences





## THE FIVE ELEMENTS

As a type of residence, a Beijing quadrangle takes into account both the utility and aesthetics in its design and construction. It also denotes cultural profundity.

The concepts of the **five elements** and the eight diagrams of divination are embodied in the building.

Chinese people believe geomancy, or fengshui in Chinese, has significance for their fortune and health. Therefore, the building of the courtyard, from location to position, and the size of each house, follows the principles of fengshui theories.

金

METAL



木

WOOD



水

WATER



火

FIRE



土

EARTH





INSPIRED BY THE ARCHITECTURE

# 四合院

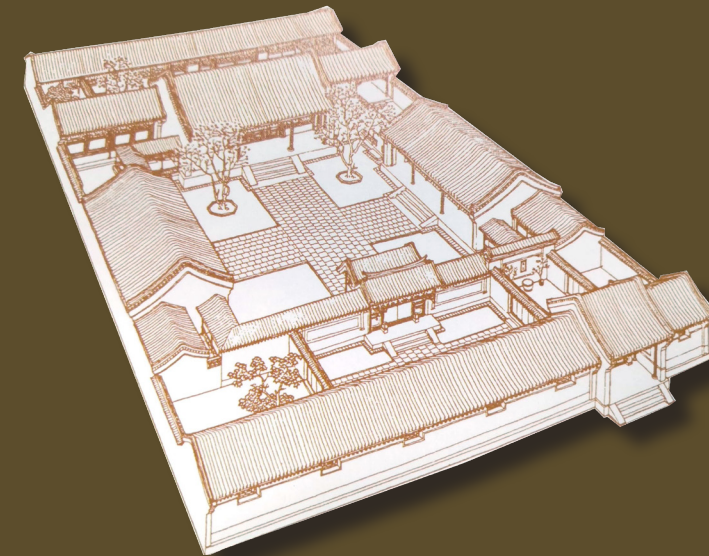
SI HE YUAN

## CHINESE QUADRANGLE

### COURTYARD HOUSE

A Chinese Quadrangle is a traditional residential house in the North of China. They first appeared during the Yuan Dynasty (1271-1368).

Siheyuan refers to a courtyard surrounded by buildings on all four sides. It also appears in English translation as courtyard houses and, less often, as Chinese quadrangles. A simple courtyard represents traditional Chinese morality and Confucian ethics.



四 "Si" means "four", which refers to the four points of the compass – north, south, east, and west;

合 "he" refers to the surroundings & unity;

院 "yuan" means "courtyard".

A Siheyuan is a closed-in space formed by houses built on all four sides. If the site for the house is small, a one-door quadrangle can be built, but if the site for the house is large, a two-door, three-door or multiple-door quadrangle courtyard can be constructed.







## THE CONCEPT OF MODERN QUADRANGLE

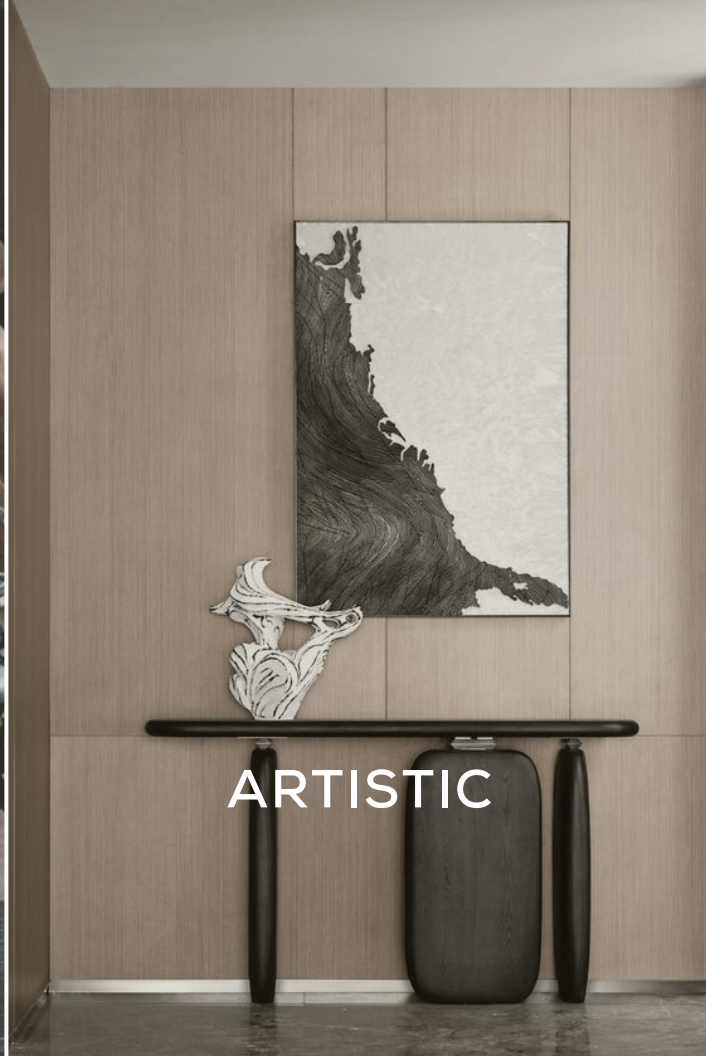
Inspired by the three realms of architectural and form, the concept of the project is to inspire human interaction with nature. Architecture, nature and interior works in harmony, creating an environment for residents to emerge oneself with surrounding context.

The idea of Modern Quadrangle injects the indoor outdoor behaviour where residents can experience the elements of design that has a deep rooted history.





ACTIVE



ARTISTIC



CULTURAL



ADVENTUROUS

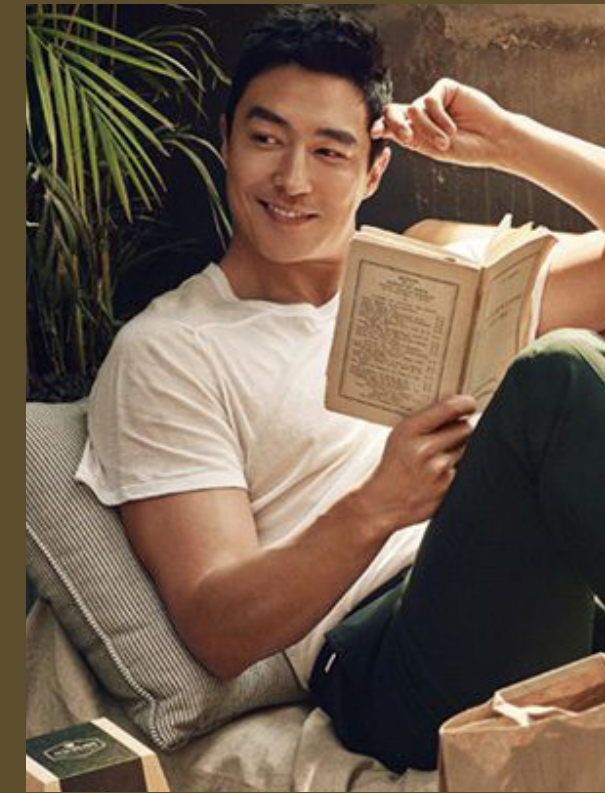


SOCIAL



FEARLESS

## CLIENT PROFILE



Daniel is an entrepreneur of a startup lifestyle brand with a biracial background. Through years of travelling, he developed an active lifestyle and love for being in nature. Daniel is always on the move and loves incorporating the outdoors into his everyday life.

Vancouver became the place Daniel calls home as it offers the best split of city vs. nature. Even with his busy lifestyle, he always manages to find time immersing himself in nature.

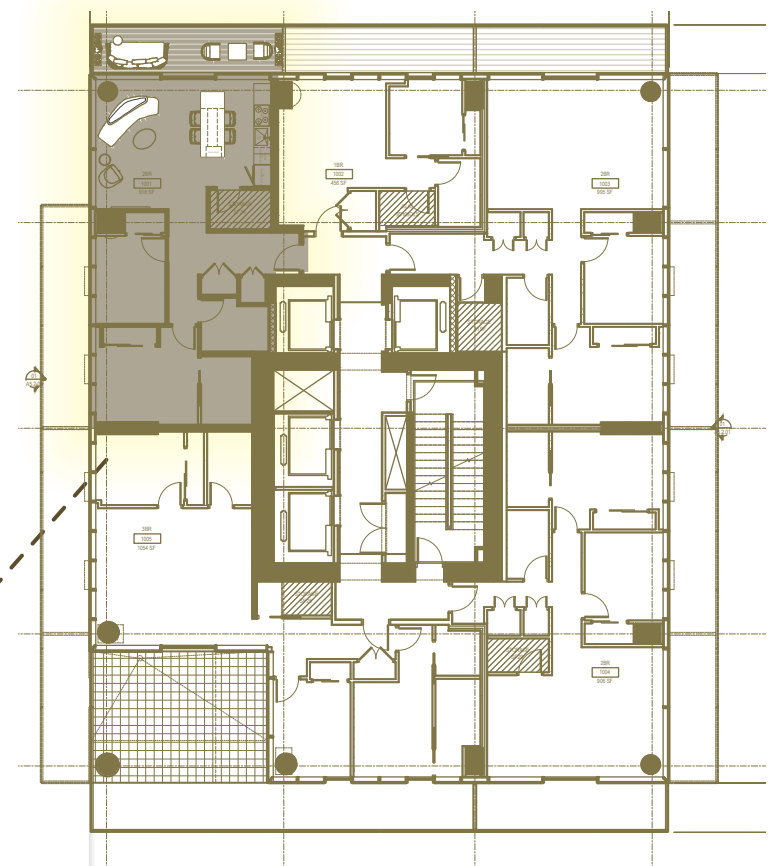




30"

7'-10"

2 BEDROOM  
Unit 1001  
918 SF



SUITE  
DESIGN





KITCHEN  
CONCEPT





















LEVEL 10







SUITE MATERIAL PALETTE



WOOD MELAMINE

EGGER HONEY CARINI  
WALNUT H3790 ST12

METAL ACCENT  
CHAMPAGNE NICKEL

QUARTZITE  
OCEAN BLUE

ENGINEERED HARDWOOD  
KHAYERI PALACE COLLECTION  
352 LIGHTLY BRUSHED





APPLIANCES SELECTION



AEG  
PERFEKT INSERT 30  
30" BUILT IN RANGE HOOD



BRIZO  
PULL DOWN FAUCET WITH ARCH  
SPOUT  
LUXE GOLD  
63075LF-GLLHP



CANTRIO  
KSS-2218-1  
22" UNDERMOUNT SINK



GAGGENAU  
VARIO 400 SERIES 30"  
TWO DOOR BOTTOM  
FREEZER  
RB 472



GAGGENAU  
200 SERIES  
DISHWASHER FULLY  
INTEGRATED  
DF 210 700

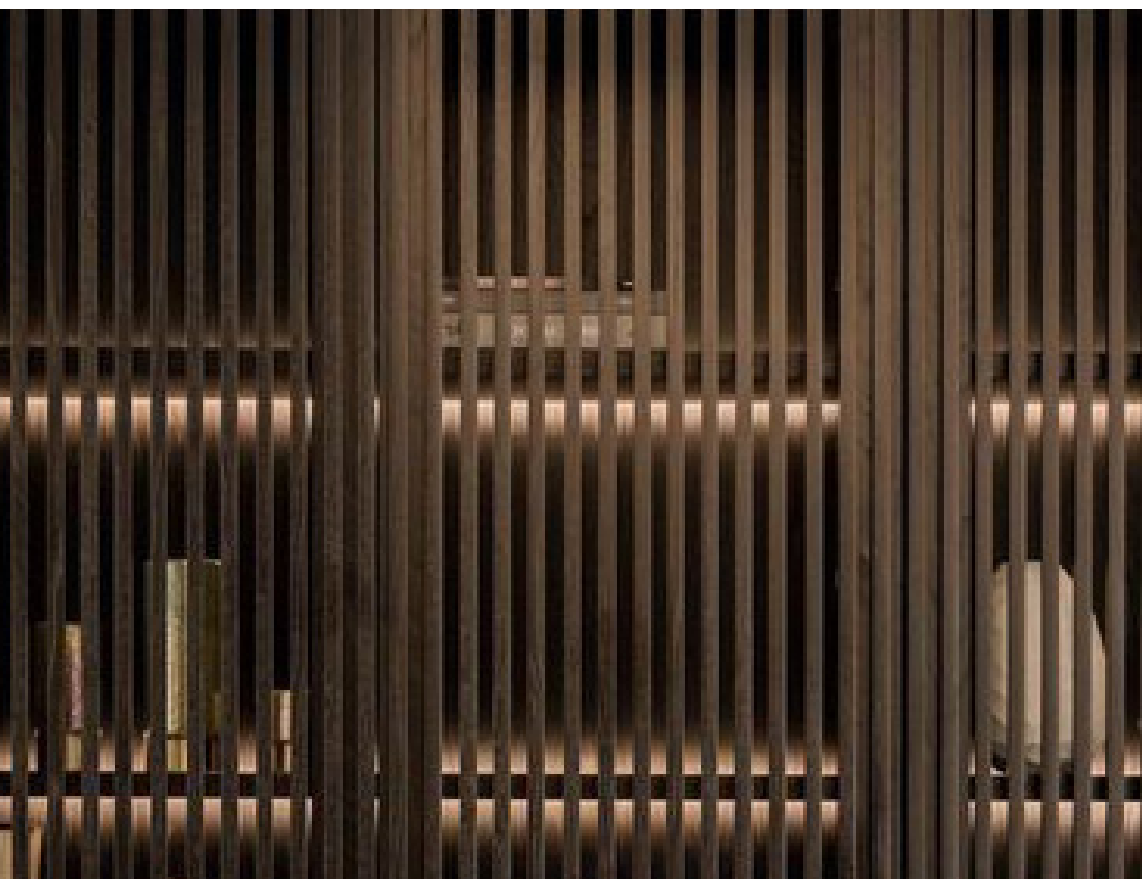


GAGGENAU  
200 SERIES FLEX  
INDUCITON COOKTOP  
FRAMELESS 30"  
CI 282 601



GAGGENAU  
400 SERIES COMBI-  
MICROWAVE OVEN  
BM 484 710





BATH  
CONCEPT









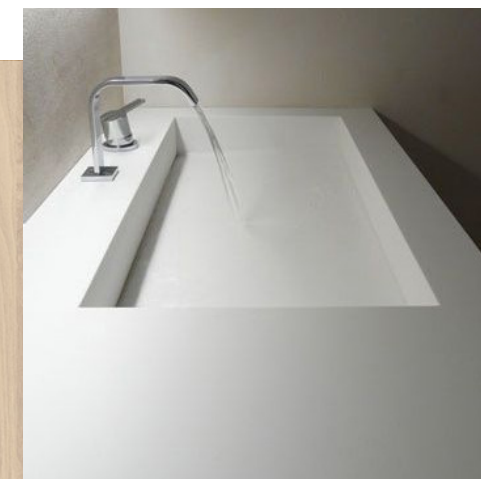


BATH MATERIAL PALETTE



SOLIDTECH

CANTRIO CUSTOM COLOUR SINK



WOOD MELAMINE  
EGGER HONEY CARINI  
WALNUT H3790 ST12



PORCELAINE  
FLUTED TEXTURE



METAL ACCENT  
CHAMPAGNE NICKEL



PORCELAINE  
PORCELANOSA LARGE FORMAT TILE







SHOWER COMBINATION



**BRIZO**  
MULTIFUNCTION SLIDE  
BAR HANDSHOWER  
LUXE GOLD  
85521-GL



**BRIZO**  
ESSENTIAL 12" LINEAR ROUND  
RAINCAN SHOWERHEAD  
WITH KINTSU 10" SHOWER  
ARM AND FLANGE  
LUXE GOLD  
81392-GL, 83806-GL



**BRIZO**  
ODIN VALVE WITH  
DIVERTER TRIM  
LUXE GOLD  
T75575-GL



**MIROLIN STRADA**  
SHOWER BASE  
#SOC6030 LA/RA



**BRIZO**  
ODIN WIDESPREAD  
LAVATORY FAUCET  
LUXE GOLD  
T65875LF-GLLHP-ECO



**CANTRIO**  
SOLITECH LAVATORY  
SINK CUSTOM COLOUR



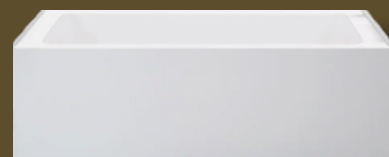
**BRIZO**  
ESSENTIAL 12" LINEAR ROUND  
RAINCAN SHOWERHEAD WITH  
KINTSU 10" SHOWER ARM AND  
FLANGE LUXE GOLD 81392-GL,  
83806-GL



**BRIZO**  
ODIN VALVE WITH  
DIVERTER TRIM LUXE  
GOLD T75575-GL



**BRIZO**  
ODIN NOON-DIVERTER  
TUB SPOUT LUXE GOLD  
RP54873GL



**MIROLIN AUSTIN**  
SKIRTED ACRYLIC TUB  
#BO60L/R

BATHTUB COMBINATION



**DURAVIT**  
ACTUATOR PLATE A1  
POLISHED CHROME  
WD5008011090



**DURAVIT**  
WALL-MOUNTED  
RIMLESS TOILET  
2542090092





## HARMONY BETWEEN HUMAN AND HEAVEN

The key concept of the Chinese quadrangle relates back to the term "Heaven and Human Are United As One". Where architecture and human nature are connected as one .

Siheyuan links the forms and function in Chinese philosophy, as harmony on four different levels: with Heaven, Earth, Humans and Self, indicating that these elements are crucial for the sustainable architectural development.

1650 Alberni, located amongst the most beautiful Stanley Park, Vancouver Harbour and lively West End neighborhood. It is one of the most desired address for one to connect with the abundance of natural beauty and slice of Vancouver city life.

天  
人  
合  
一



