

RIDEAU

100% CONCEPT PRESENTATION
NOVEMBER 16TH 2021



STUDIO
MUNGE

HISTORY

NATURAL MATERIALS

OLD + NEW

CANADIAN

DISTINCTION

TIMELESS ENGAGEMENT

AUTHENTICITY



Ottawa

Canada's capitol city was originally named "Bytown". The settlement was established as a result of the construction of the Rideau Canal and grew largely due to the lumber industry

The Rideau Canal

A UNESCO (United Nations Educational, Scientific and Cultural Organization) World Heritage Site and the oldest continuously operated canal system in North America

The Lumber Industry

The lumber industry was a main contributor to Ottawa's early growth and prosperity - making wood a key element of the design

Existing Site - The City Registry Office

Constructed in 1873 housed many of Bytown's important documents. It is a small but important civic monument that represents the growth of Ottawa from a small town into a metropolitan city

GROUND FLOOR LOBBY

GROUND FLOOR LOBBY | INSPIRATION IMAGERY

MODERNIZED DETAILS



MASCULINE

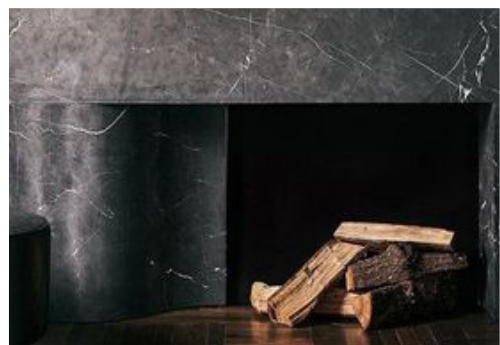
WARM



NATURAL USE OF WOOD & STONE

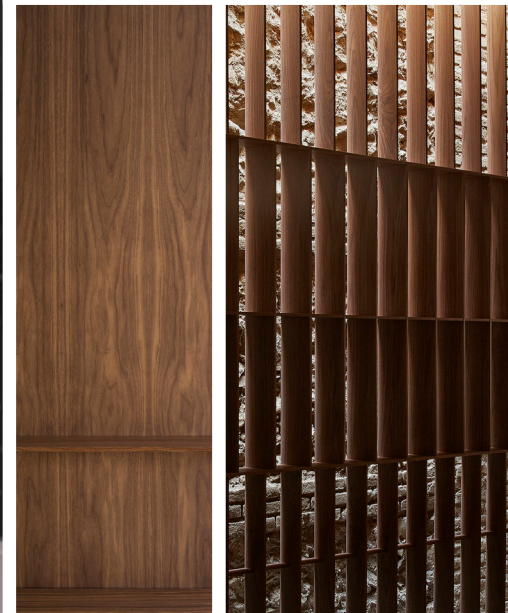


REFINED



MASCULINE

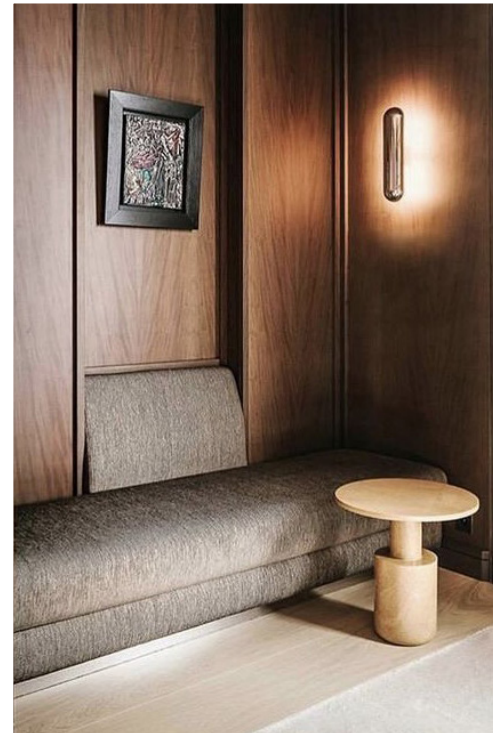
COZY



NATURAL USE OF WOOD & STONE

GROUND FLOOR LOBBY | INSPIRATION IMAGERY

HIDDEN NOOKS



WOOLS & LEATHERS



MIXED USE OF TEX-



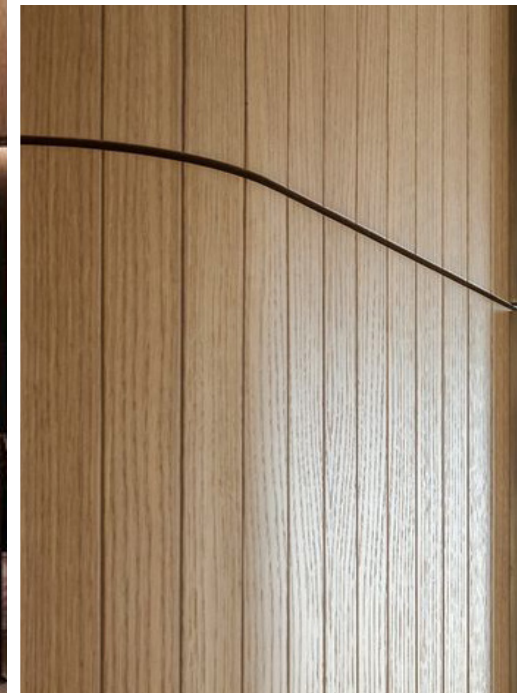
CLASSIC REIMAGINED



EVOCATIVE



RELAXED



FUNCTIONAL

CLASSIC USE OF PAN-

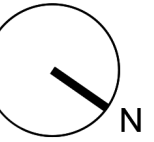
INVITING

GENUINE

EDUCATIONAL

3RD FLOOR AMENITIES

3RD FLOOR AMENITIES | FLOOR PLAN



LEVEL 03
UNIT 04
SAME AS LEVEL 4-20
UNIT 16
2BRC
ARCH: 795
SQ.FT

LEVEL 03
UNIT 03 - MODEL SUITE
SAME AS LEVEL 4-20
UNIT 15
1BRC+
ARCH: 667
SQ.FT

LEVEL 03
UNIT 02
SAME AS LEVEL 21
UNIT 03
2BR+
ARCH: 7872
SQ.FT

LEVEL 03
UNIT 01 - GUEST SUITE
PROPOSED: 437
SQ.FT

3RD FLOOR AMENITIES | LOUNGE | INSPIRATION IMAGERY

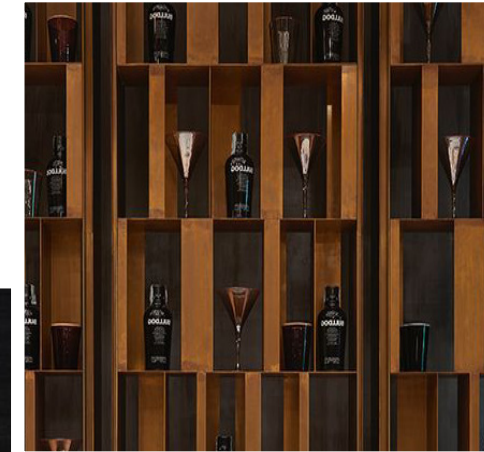
WHIMSICAL



TEXTURES

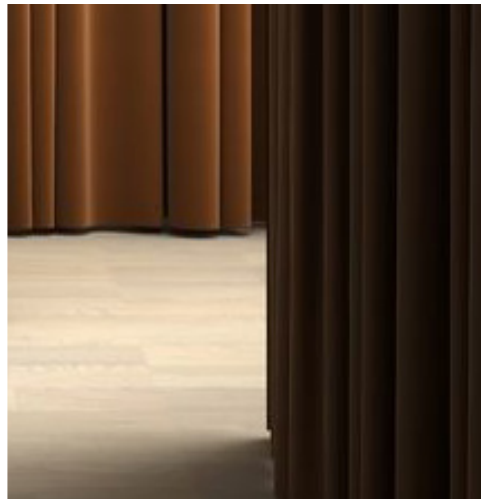
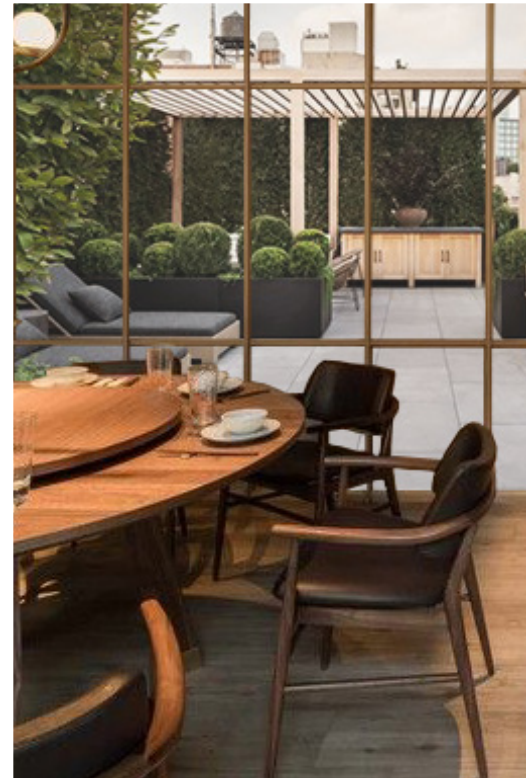


LAYERS



A PLACE TO CREATE MEMORIES

INDOOR | OUTDOOR



MODERNIZED

TIMELESS



SOFT



MOVEMENT

3RD FLOOR AMENITIES | BAR & GAME ROOM | INSPIRATION IMAGERY

CLASSIC GAMES



INSPIRED BY NATURE



OLD WORLD MATERIALS MODERNIZED



REMINISCENT OF OLD



FUN



WARM & COMFORTABLE

ENTERTAINING

AUTHENTIC

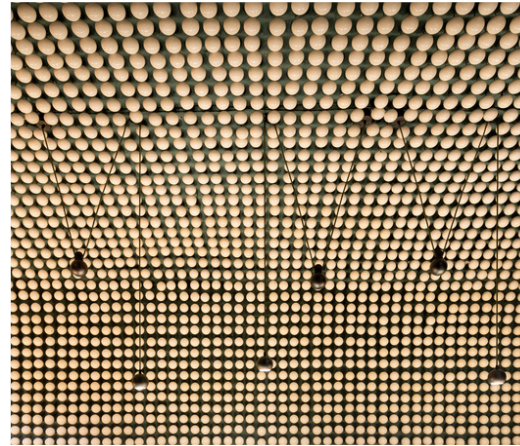
3RD FLOOR AMENITIES | THEATRE | INSPIRATION IMAGERY

DRAMATIC

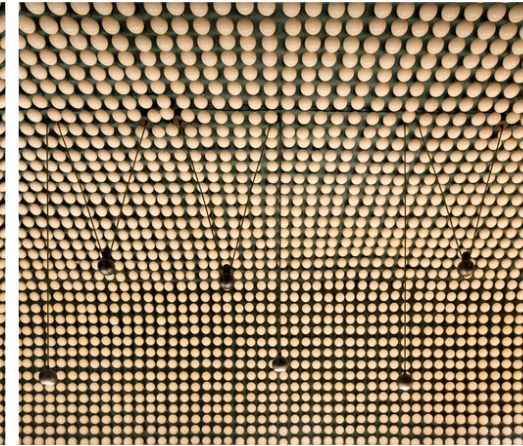
CLEAN



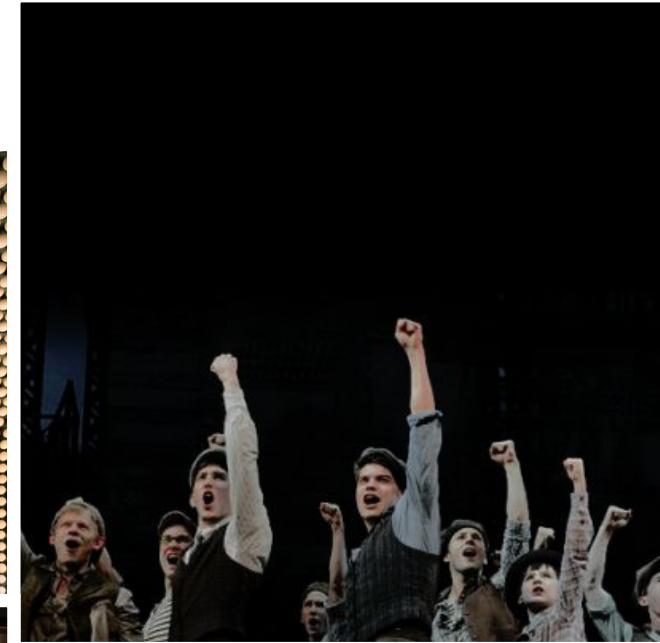
THEATRICAL



LAYERED



SPIRITED



NOSTALGIC



CALM



PASSIVE



WELCOMING



ENTERTAINING



ACTIVE



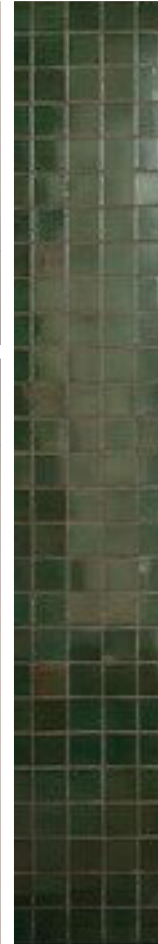
INTERACTIVE



CURIOUS



INSPIRING



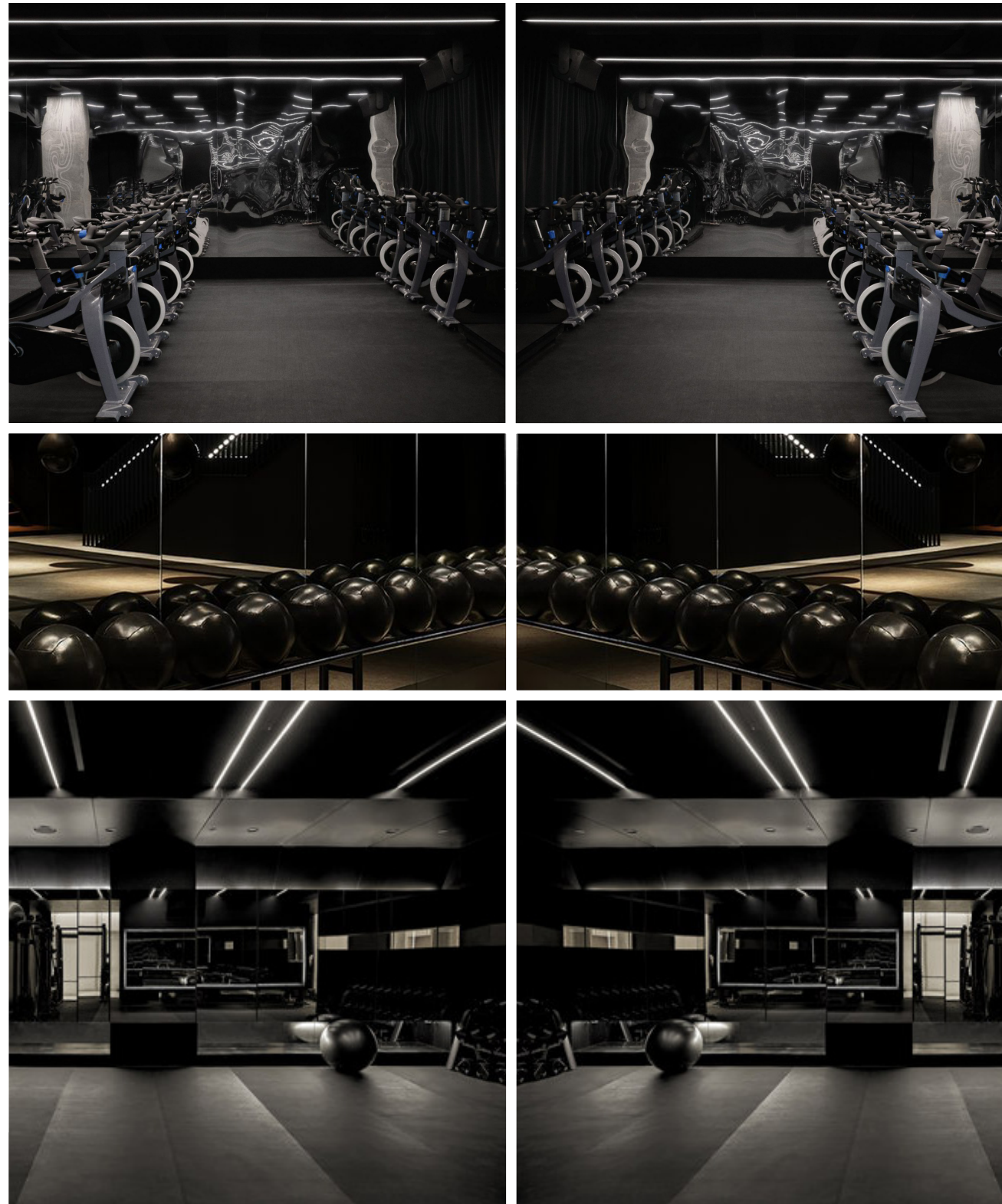
ACTIVE



CLEAN & SIMPLE

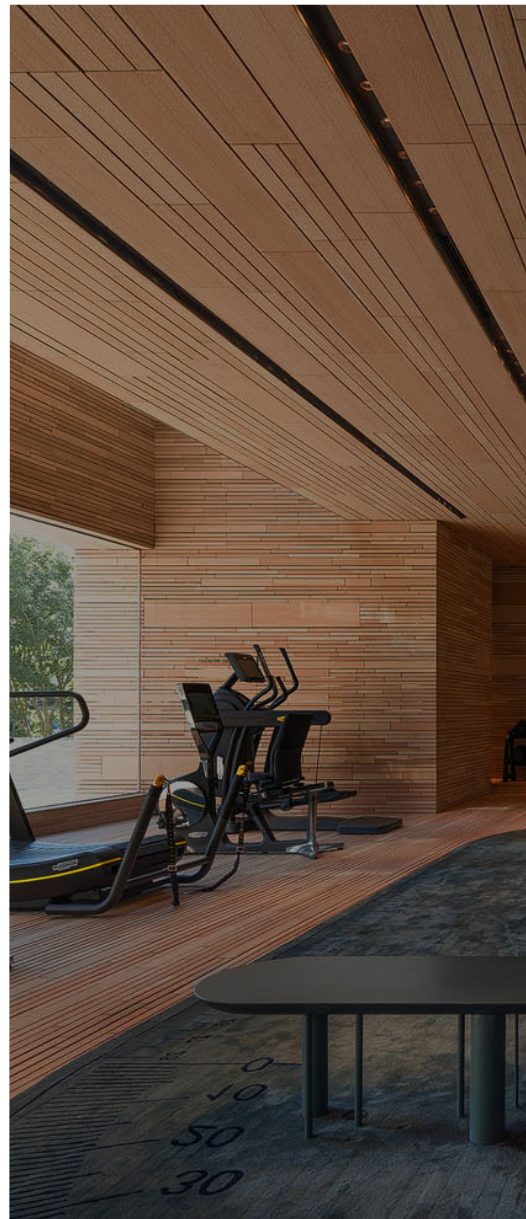
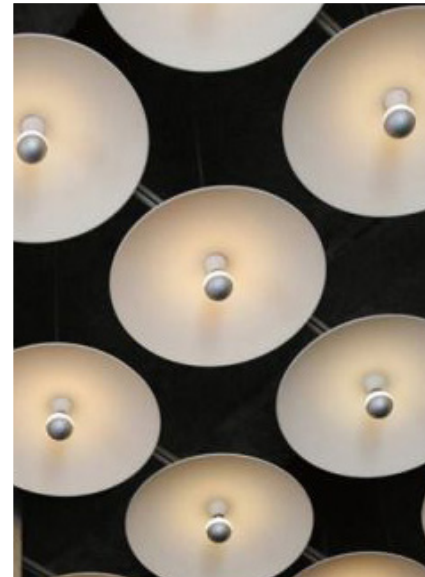
3RD FLOOR AMENITIES | FITNESS ZONE | INSPIRATION IMAGERY

DARK



RAW

LAYERS



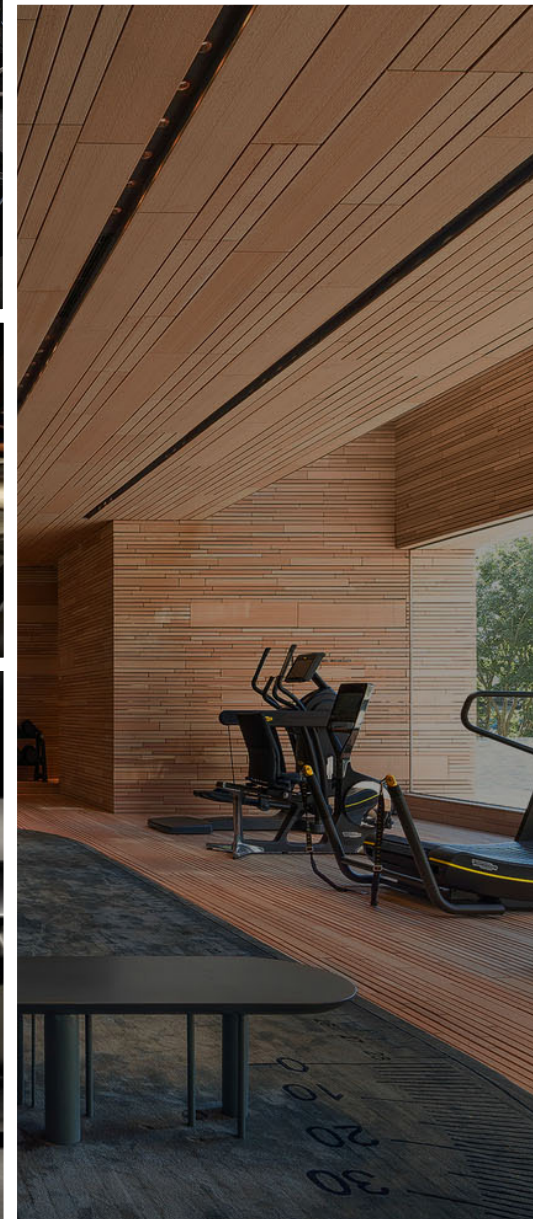
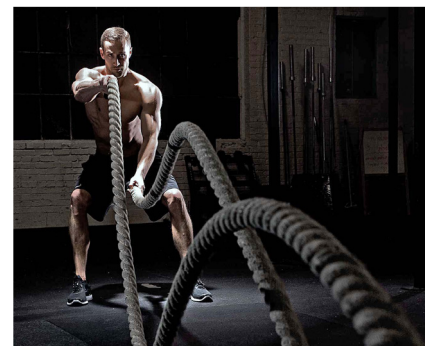
WARM WOODS

FEATURE



ACTIVE

PROGRAM



RETREAT

LAYERED



SOCIAL



CLASSIC



TIMELESS



SOCIAL



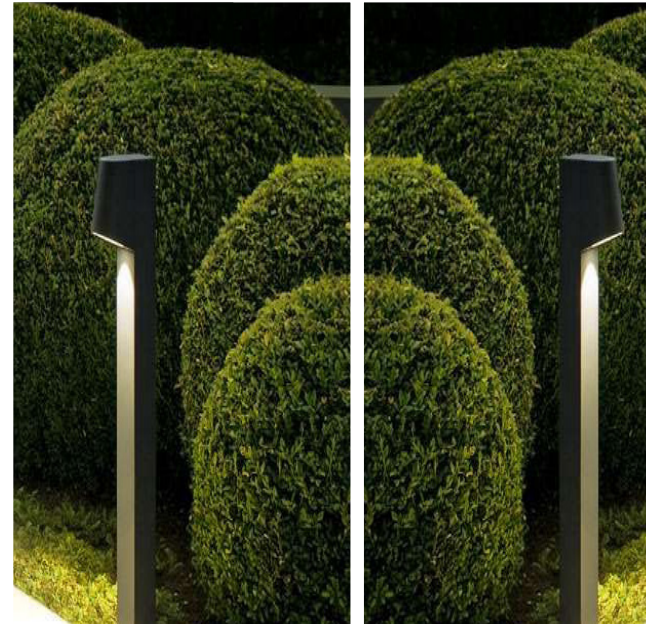
SCULPTURAL



INTERACTIVE



INTERACTIVE



RESIDENTIAL

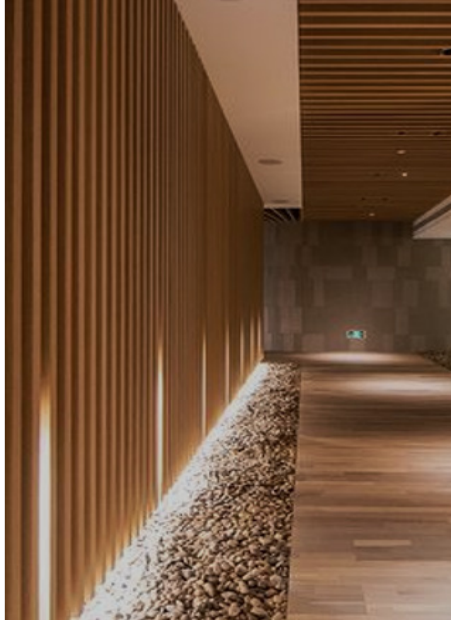


GREEN

DISCOVERY

ROOFTOP AMENITIES

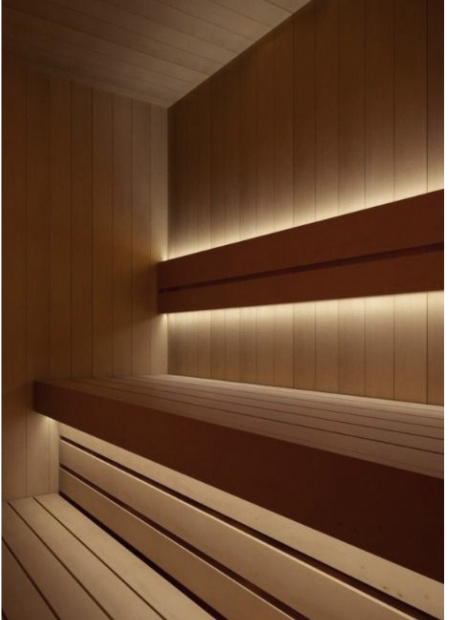
SPA



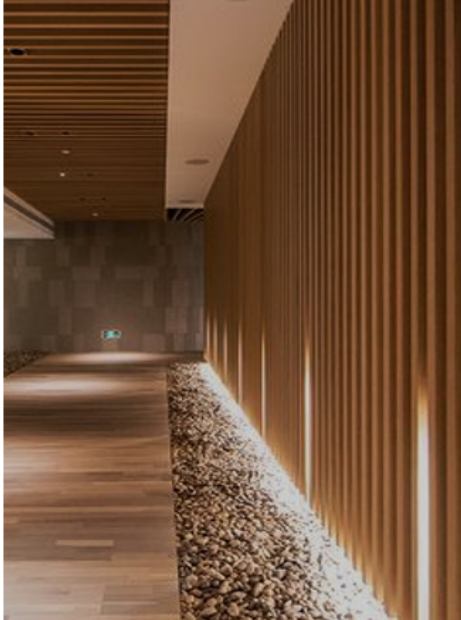
RELAXING



INFRARED SAUNA



FEATURE



THERAPY

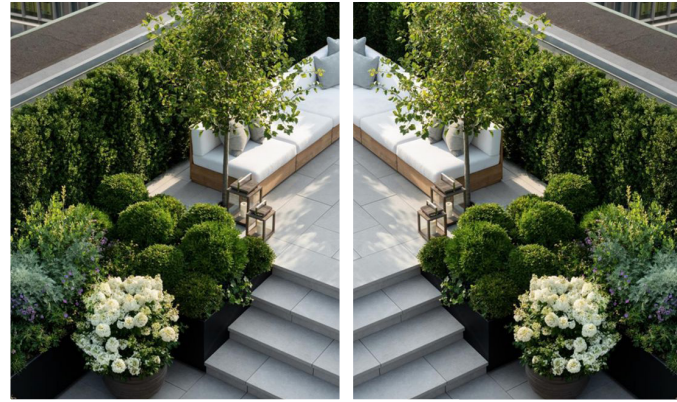
MEDITATION

ROOFTOP AMENITIES | INSPIRATION IMAGERY

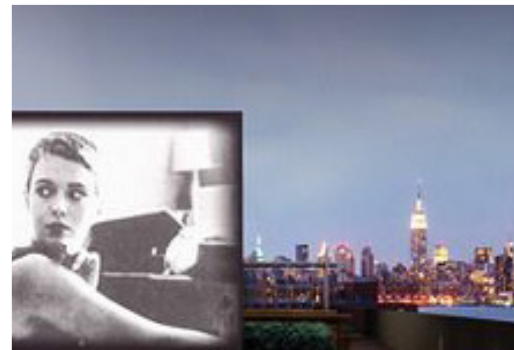
CABANAS

ESCAPISM

NESTLED IN LANDSCAPING



NESTLED IN LANDSCAPING

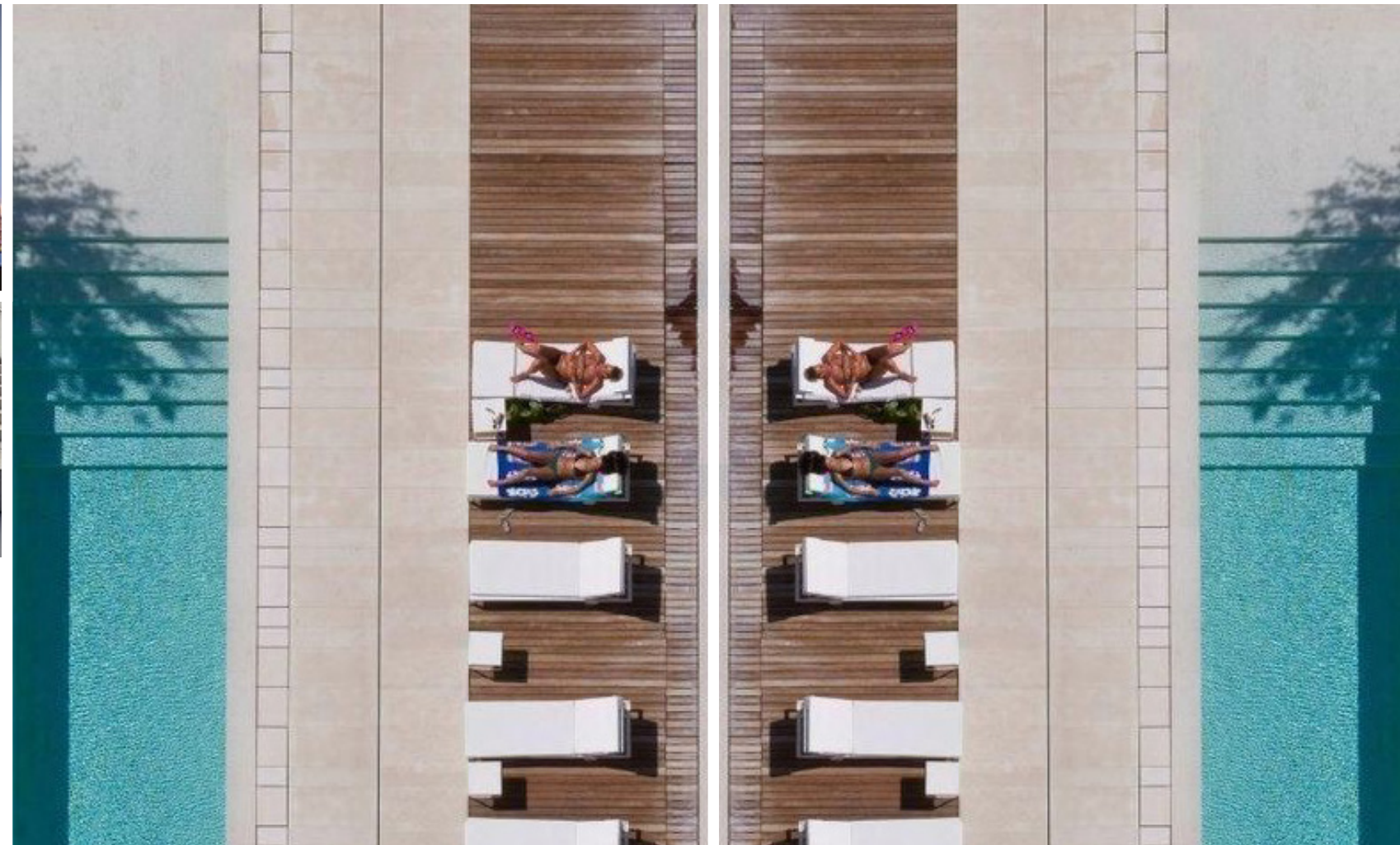


THEATRICAL

THEATRICAL



LANDSCAPE

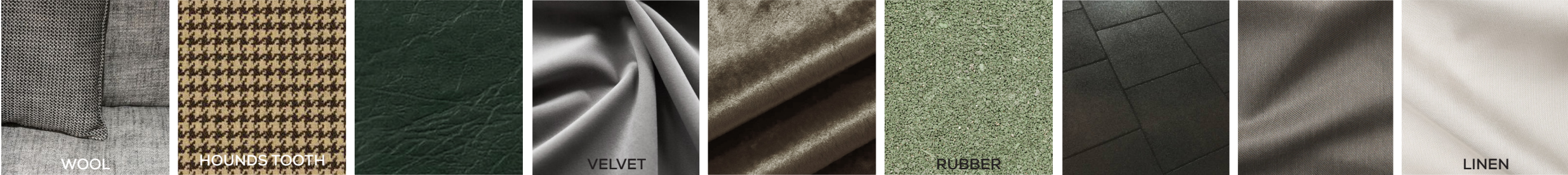


RETREAT

OASIS

MATERIALS

LOBBY AND AMENITIES | MATERIAL INSPIRATION



SM PROJECTS

STUDIO MUNGE | PROJECTS

Rodeo Drive



Location : O'Neill Road, Don Mills, Toronto
Building Type: Residential
Building Information: 32 floors, featuring 1 and 2 bedroom residences.



The Capitol



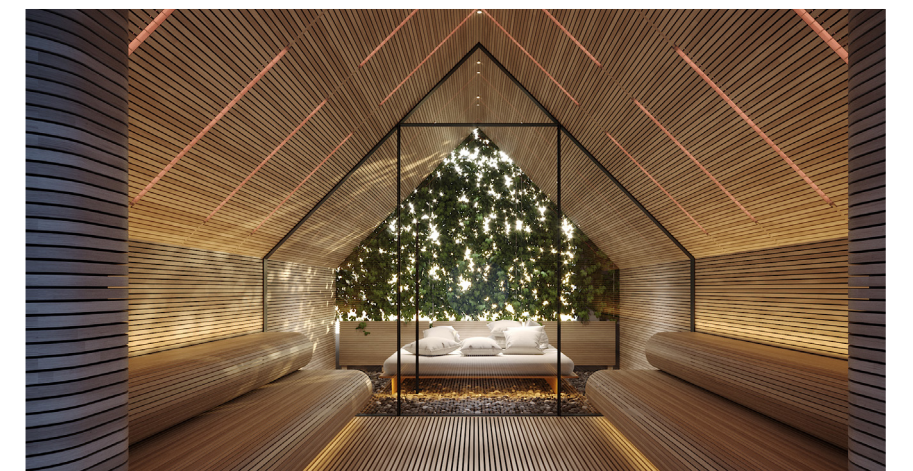
Location : 2500 Yonge Street, Toronto.
Building Type: Residential
Building Information: 14 Storeys featuring 145 suites available in 1, 2, and 3 bedroom residences.



Natasha



Location : 263 Adelaide St W, Toronto
Building Type: Residential
Building Information: 47 Storeys featuring 353 suites ranging from studio- 3 bedroom residences.



THANK YOU