

FORUM

09.2021

STUDIO  
MUNGE

*“Control is our tool to successfully reaching our goals on our journey to design excellence. As we progressively expand our operations by bringing in new clients, increasing our scope of work and staff, developing key partnerships, we remain focused on maintaining and elevating our standards. At the same time, we prioritize each other to create an environment we can all be proud of. As a design collective, we can control this growth together and make it an extraordinary experience.”*





Roxanne Mayanga, Office Manager

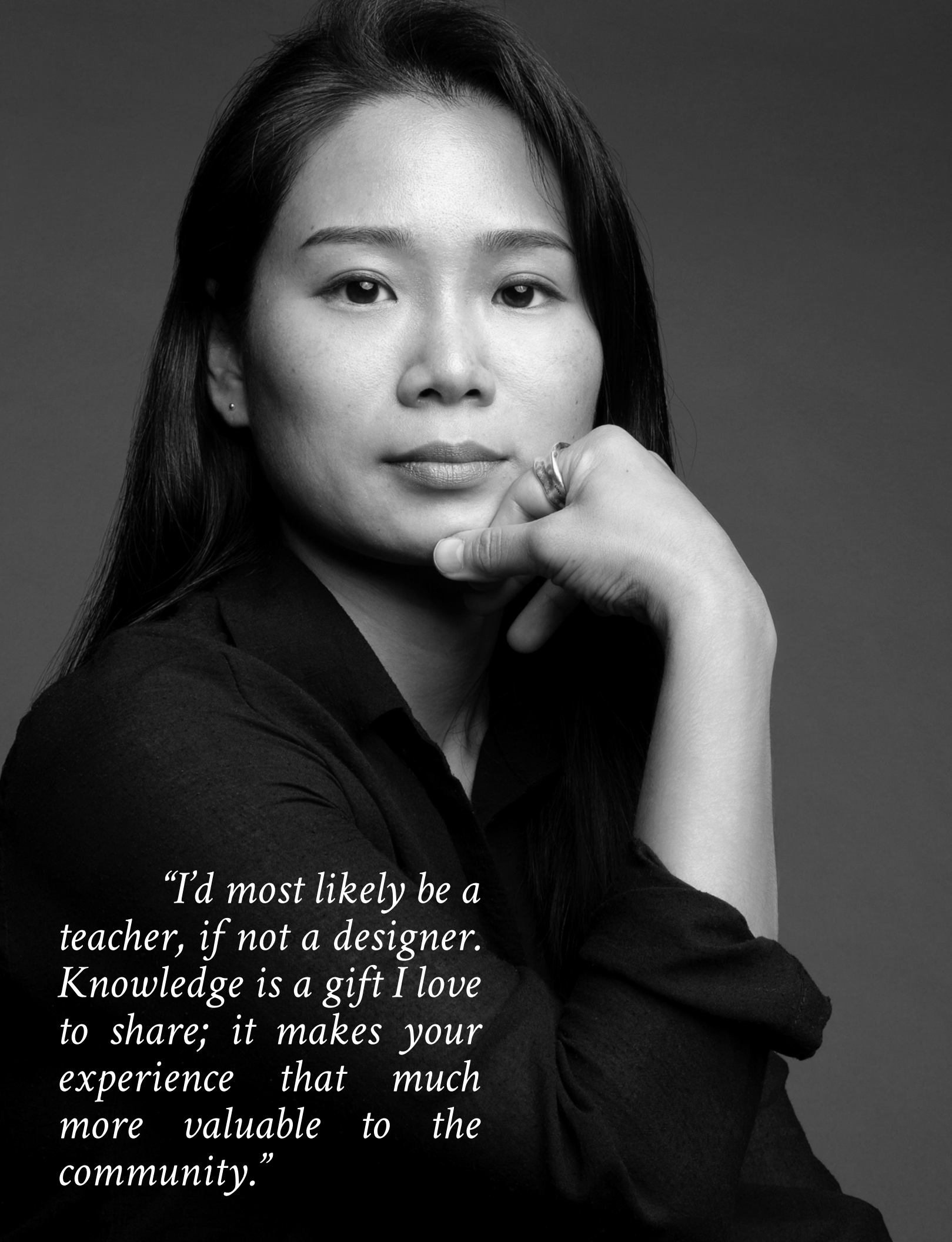
*“Every day is a gift I honour by showing up. Peace or chaos, I accept the journey and do my best to be present, kind and authentic. It’s my way of finding purpose, ensuring I lived fully using every bit of talent I have to offer the world.”*

A self-identified *Wereld Kind* - Dutch for “Child of the World”, Roxanne brings multiculturalism, a fresh perspective and a wealth of experience in office management to Studio Munge following formative years at architectural and design firms. Self-assured and a brilliant communicator, Roxanne’s innate ability to elevate the conversation from emotional to rational inspires confidence from friends and colleagues as she intelligently mitigates situations.

Grateful for Life, eclectic and multidimensional, she appreciates beauty in all forms, from reading poetry and antique books gathered at vintage stores to watching

Bollywood movies or Korean soap operas while sipping a crisp glass of Sauvignon Blanc nestled in her sofa. Roxanne’s music playlist is as wild as her taste for foreign films ranging from Techno Opera to 80’s Rock, Reggae and RnB. Devout, Roxanne infuses her daily with spirituality while always remaining attentive to others’ philosophies as a way to celebrate the Divine.

*“Every day is a gift I honour by showing up. Peace or chaos, I accept the journey and do my best to be present, kind and authentic. It’s my way of finding purpose, ensuring I lived fully using every bit of talent I have to offer the world.”*



*“I’d most likely be a teacher, if not a designer. Knowledge is a gift I love to share; it makes your experience that much more valuable to the community.”*

## Rosie Roh, Designer

With years of experience working on large scale multi-tower developments for international and local Canadian firms, Rosie joins Studio Munge with a strong desire to keep developing human-centric concepts. A designer who focuses her solutions on ergonomics and experiential environments, Rosie is most inspired by the people surrounding her as she thrives in the collaboration process.

*“I love connecting with my team and come up with solutions together. It brings the project to another level. I’d most likely be a teacher, if not a designer. Knowledge is a gift I love to share; it makes your experience that much more valuable to the community.”*

More than a talented creative, Rosie is a multilayered and kind being that embraces her contrasts - quiet and calm yet energetic and dynamic, as she skates on her longboard towards Woodbine Beaches. Passionate about ultra-realist art, architecture and music, she mentions Seoul as her favourite destination - a city that never sleeps and an energizing world bustling with creativity, drive and ambition. Could it be that the South Korean metropolis mirrors her own qualities?

Currently working on the Sagamore in Miami, we look forward to witnessing Rosie bloom in our studio as a brilliant team member and a remarkable designer.



*“I’m proud of the reputation that I’ve built over the years from employee to company owner. Through hard work and humour, I’ve positioned myself as honest and dependable.”*

Zachary Schwartz, Partner - Studio Munge Build

Gregarious, pragmatic and decisive, Zachary brings a positive can-do attitude and over a decade of experience in the construction management field to Studio Munge after successfully completing large scale residential and commercial retail projects for major North American groups such as Bed Bath and Beyond, LA Fitness, RBC and CIBC along with multi-tenant buildings.

Today, as a partner in our studio’s construction management division, he will oversee the controlled execution of our design intent following an outstanding collaboration managing the construction of our Rosemary Lane Residence.

*“I’m proud of the reputation that I’ve built over the years from employee to company owner. Through hard work and humour, I’ve positioned myself as honest and dependable.”*

Passionate about wind and water sports, Zachary is a competitive sailor, which has influenced his work ethic in many ways, while coastal Spain inspires his retirement dreams. As we welcome Zachary to Studio Munge, we look forward to seeing his drive and expertise help us further position ourselves as a multidisciplinary design firm creating experiential turnkey residences for a most discerning clientele.

We are Studio Munge

**STUDIO  
MUNGE  
IS** \_\_\_\_\_

**RISING  
BLOOMING  
GROWING  
EXPANDING  
DIVERSIFYING  
HIRING**



**CREATE  
A BETTER  
TOMORROW  
JOIN OUR  
DESIGN  
COLLECTIVE**

***BE* \_\_\_\_\_ *YOURSELF***

Hospitality Designer - All Levels  
Residential Designer - All Levels  
Project Manager - High Rise

**WATCH VIDEO**



New Project - Edition Residences, Miami, FL, USA



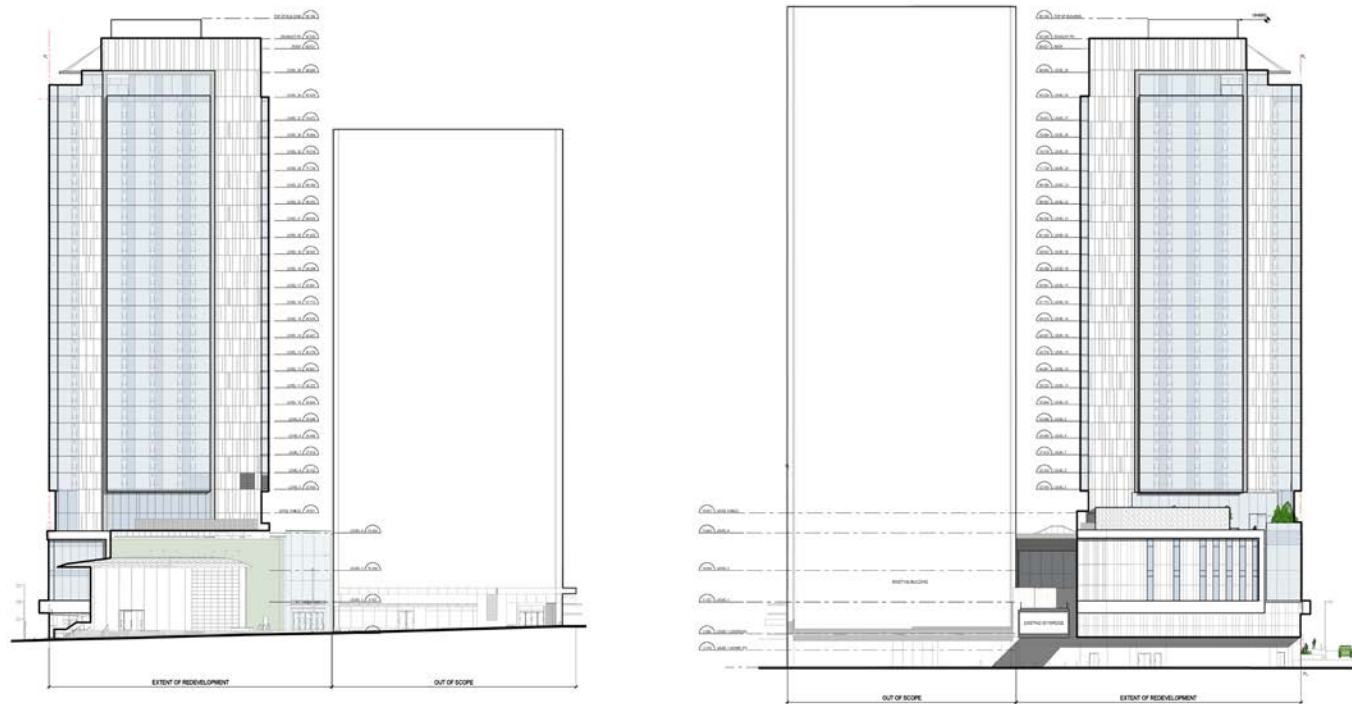
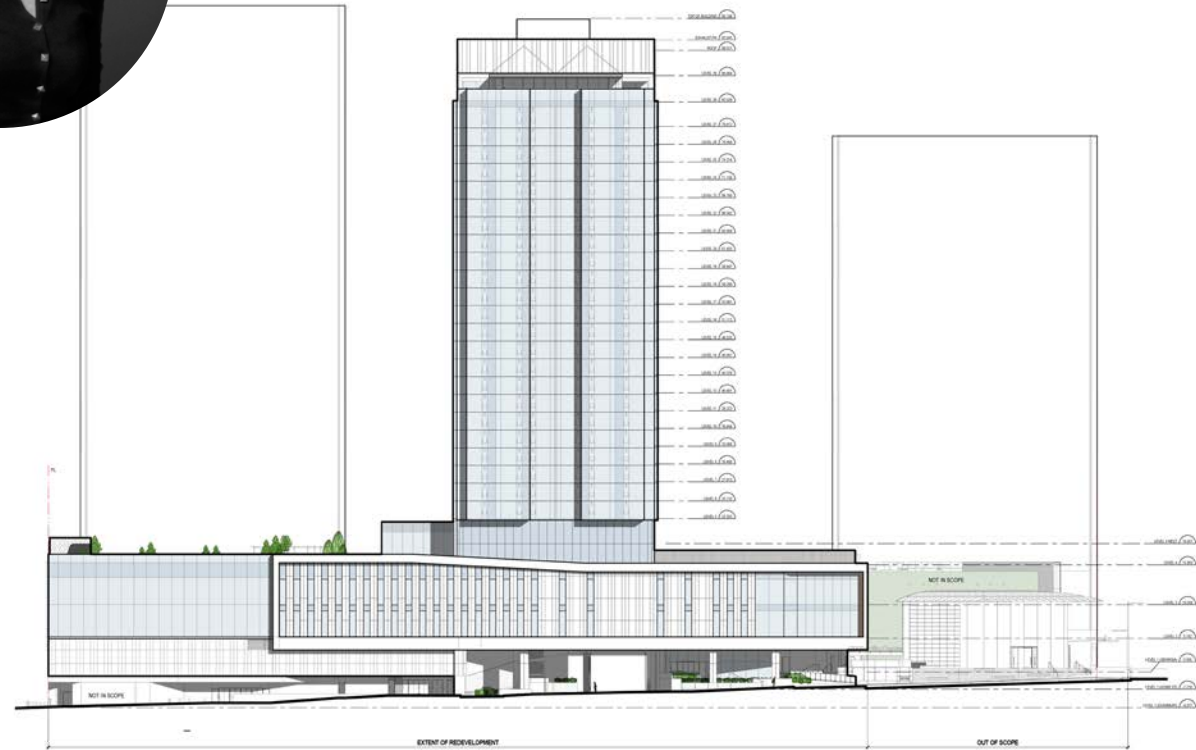
Local Context, Biscayne Bay; Architecture by Architectonica

[WATCH VIDEO](#)





New Project - The Ritz-Carlton, Vancouver, BC, CA



Architectural Study by Zeidler Architecture







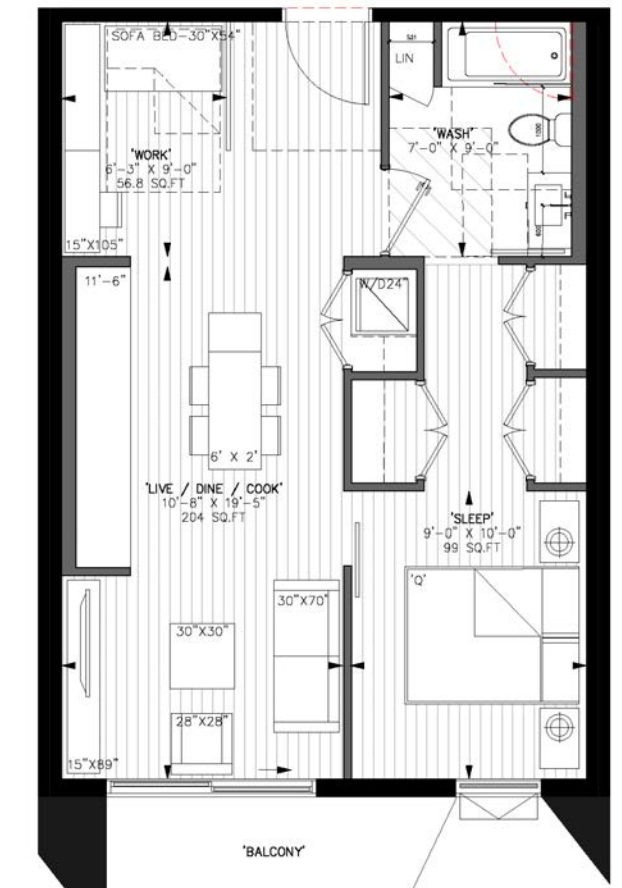
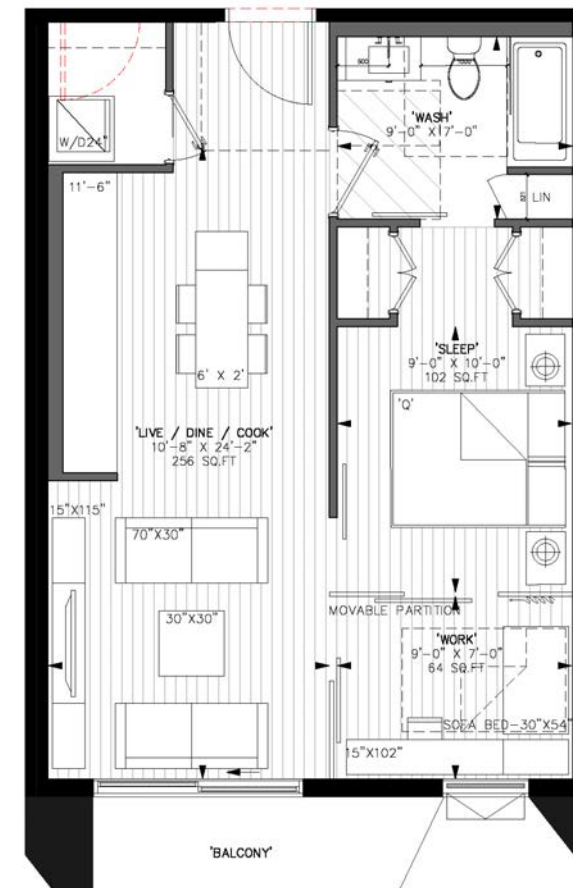
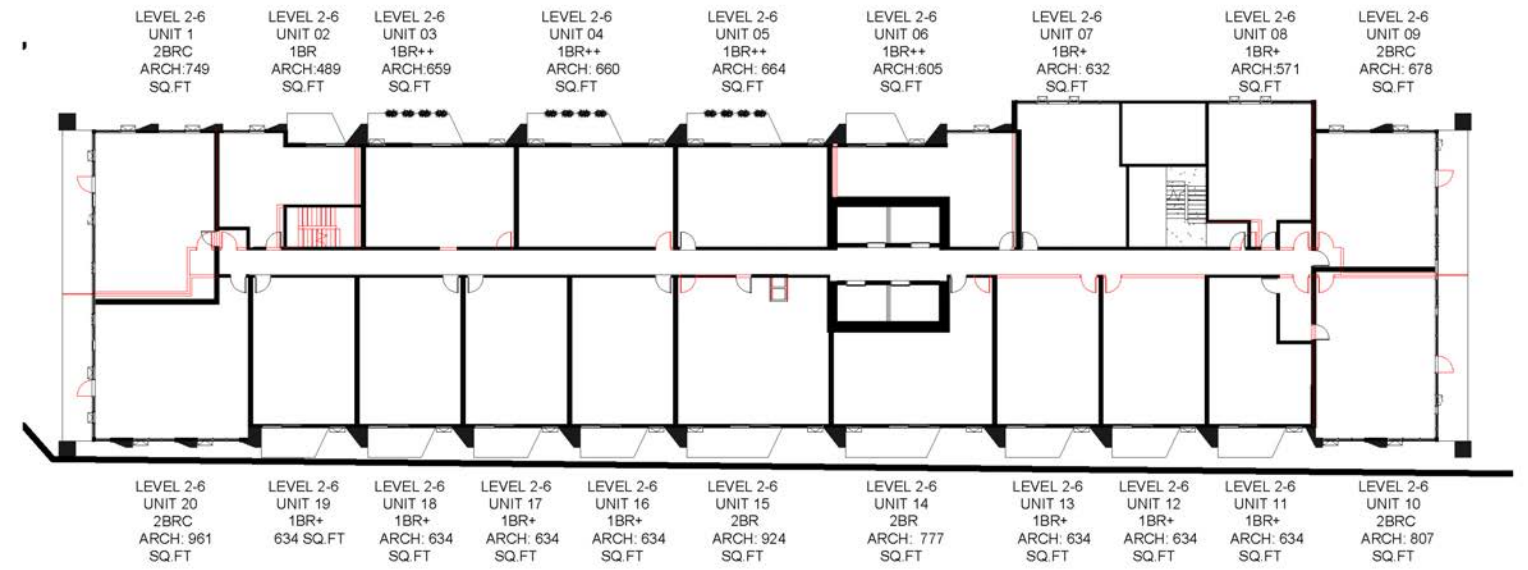
New Project - 750 Peel, Montreal, CA



**CF** Cadillac Fairview



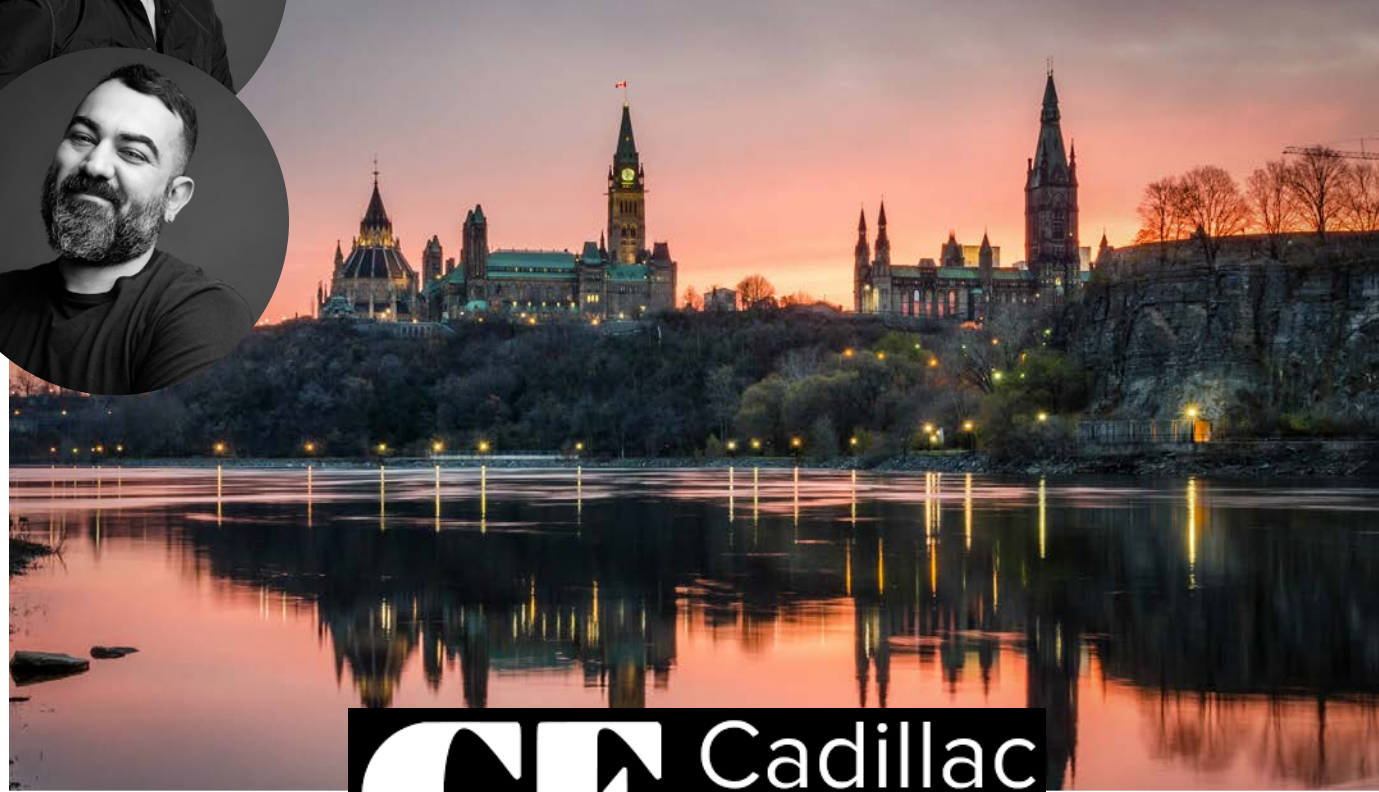
This Page: Montreal Local Context; Multi phase development by Cadillac Fairview. Next Page: Unit Layouts



**VIEW LAYOUTS**



New Project - Rideau, Ottawa, CA



**CF** Cadillac Fairview



This Page: Ottawa Local Context; Rideau Centre by Cadillac Fairview. Next Page: Unit Layouts



LEVEL 6-21 - 1 BR - UNIT -14  
1BED - 1 WASH + WORK  
CURRENT: 667 SQ.F  
OPTION - 1

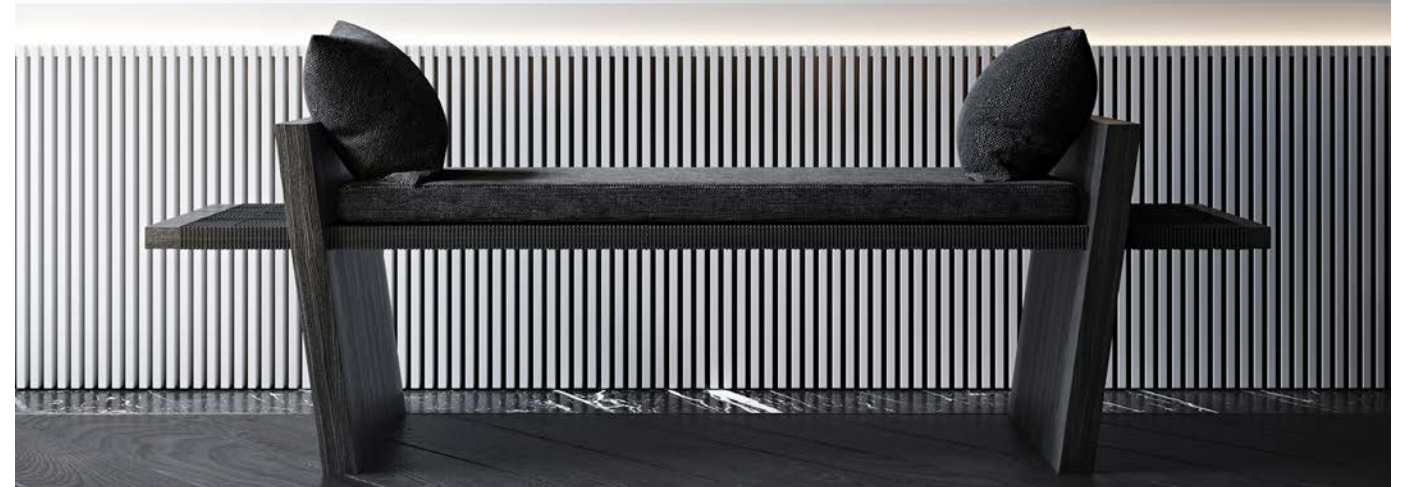
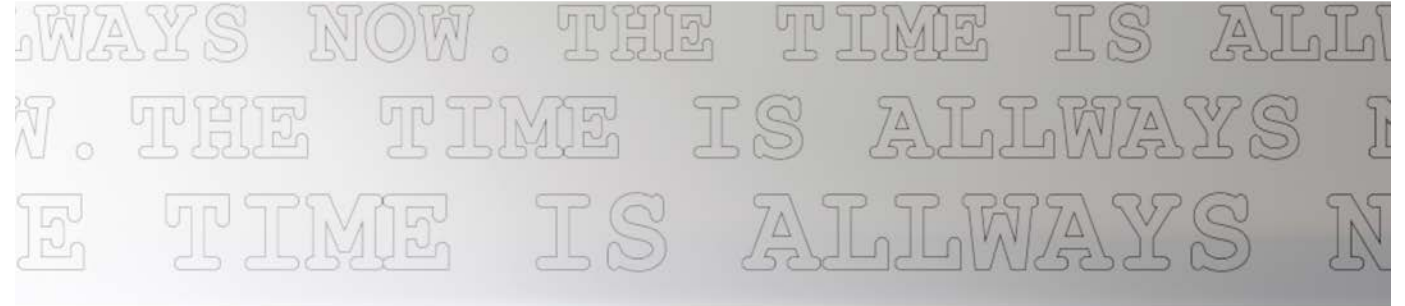


LEVEL 6-21 - 1 BR - UNIT -14  
1BED - 1 WASH + WORK  
CURRENT: 667 SQ.F  
OPTION - 2

**VIEW LAYOUTS**



Natasha The Residences, Toronto, CA



This Page: Sense of Arrival ft art by Peter Tuney. Next Page: Piano Lounge.

[EXPLORE IN LIBRI](#)





This Page: Dining Room ft custom table. Next Page: Kitchen ft pizza oven connected to circular fire pit.





This Page: Multimedia content production studio; Laundry Room Lounge.



Wellness Centre incl. fitness training & infra red sauna.



The Capitol Gallery, Toronto, CA



EXPLORE IN LIBRI



Lytton Park Residence, Toronto, CA



*This page: Palette development; Foyer. Next Page: Dining room views.*

**EXPLORE IN LIBRI**



*This Page: Kitchen views. Next Page: Walk-in closet; Main bathroom.*





Muir, Halifax, CA



Custom FF&E including minibar; weaved rug; bed frames and side tables



**EXPLORE IN LIBRI**

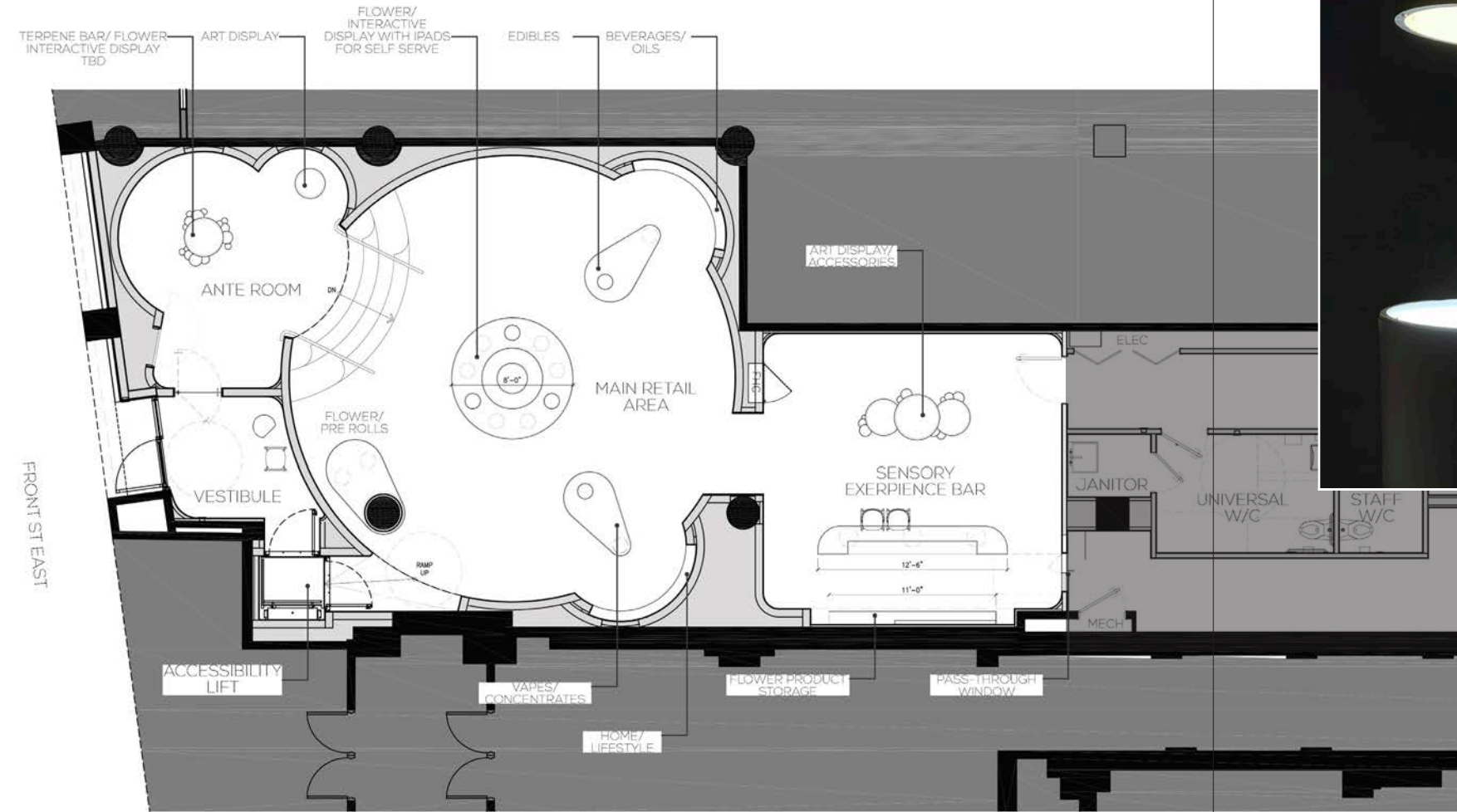
Eventscape HQ, Toronto, ON, CA



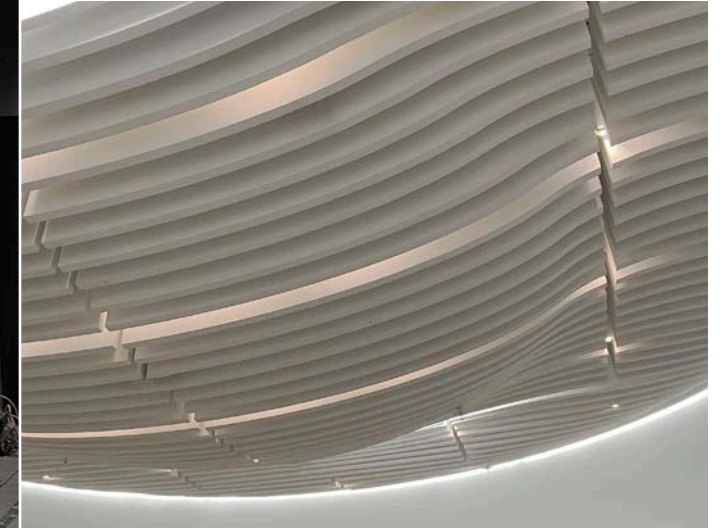
**EXPLORE IN LIBRI**



Civilian House of Cannabis, Toronto, CA



Clockwise: Ante Room; Main Retail Area ft slat ceiling



EXPLORE IN LIBRI



Ember Grill, Delray Beach, FL, USA



Comparison views Renderings vs Photography

**EXPLORE IN LIBRI**

The Pearle Hotel & Spa, Burlington, ON, CA

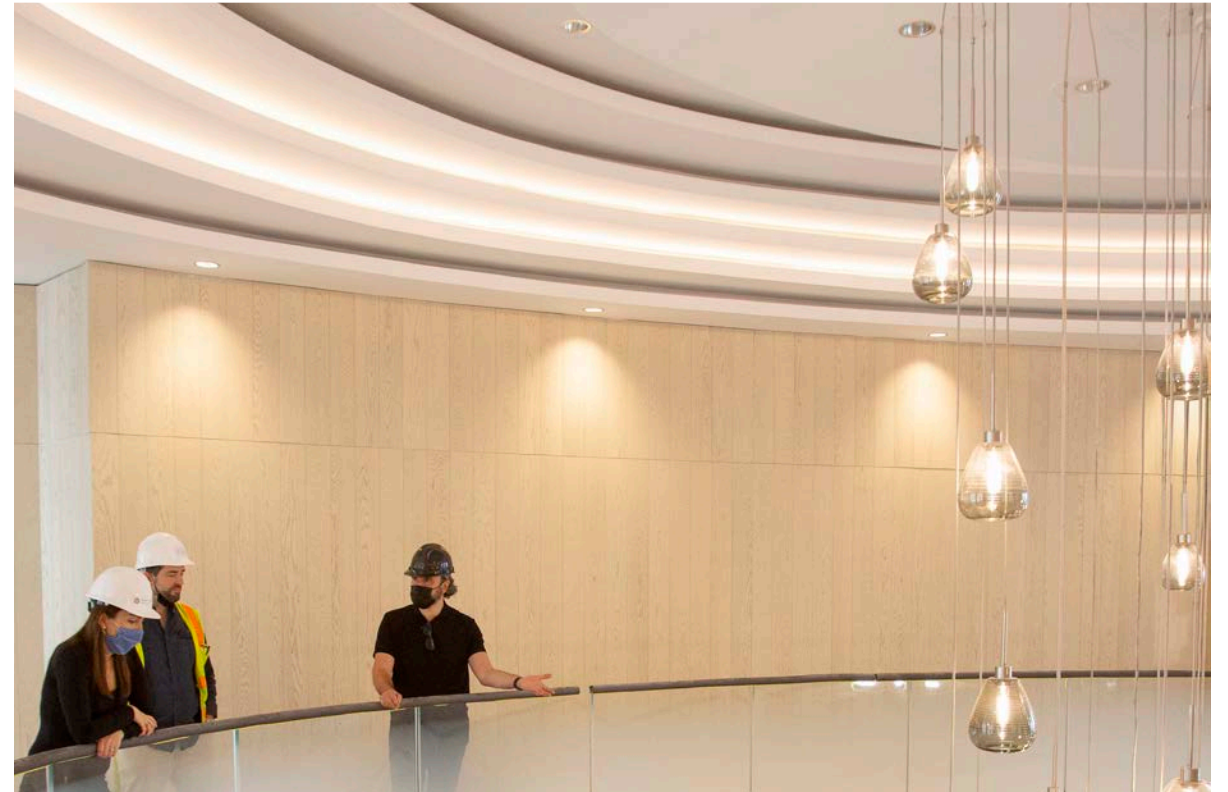
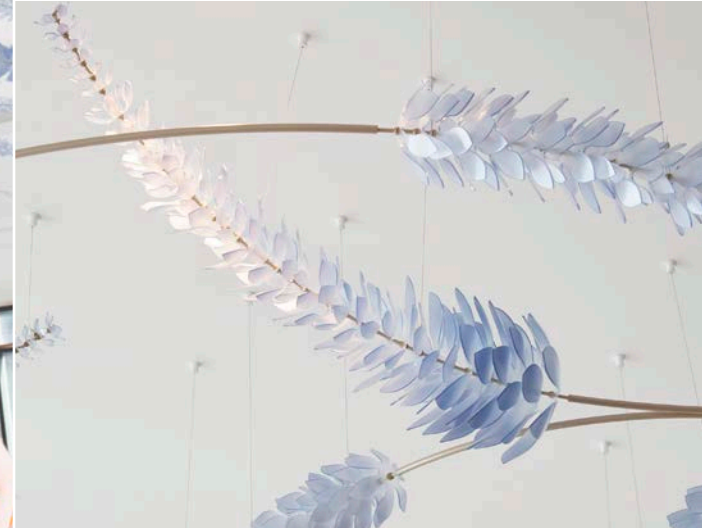


Lobby staircase ft custom pendant..

[WATCH VIDEO](#)



Clockwise: Ballroom ft custom lupine chandelier; Mezzanine view





Spa at Pendry Tampa, FL, USA



Front facade & Sense of Arrival. Next Page: Respite Lounge & Treatment Room

**EXPLORE IN LIBRI**



Outdoor Lounge & Pool.



Pinwheel at Pendry Tampa, FL, USA



*“we reviewed Pinwheel and LOVED it. We all really appreciate the thought put into the story, materials, and experience planning of the space – it’ll be a huge hit!”*

This Page: Main view & material palette. Next Page: Kitchenette & Lounge Vignette.

**EXPLORE IN LIBRI**







NOBU Toronto, Toronto, ON, CA

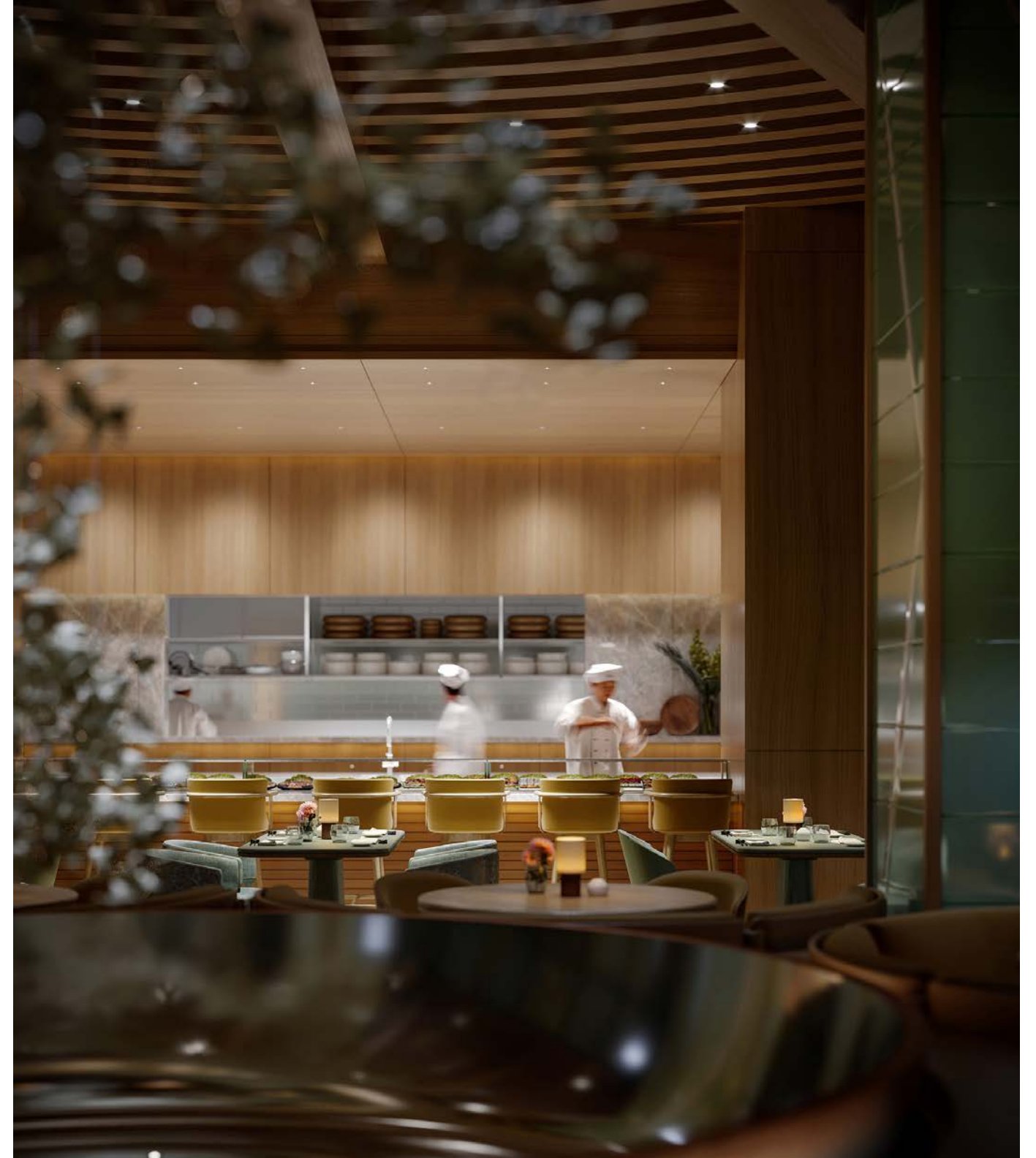


Ground floor main bar and lounge. Next page: Sake bar and main dining room

**EXPLORE IN LIBRI**



Mitzunara private dining room



Main dining room vignette towards open kitchen.



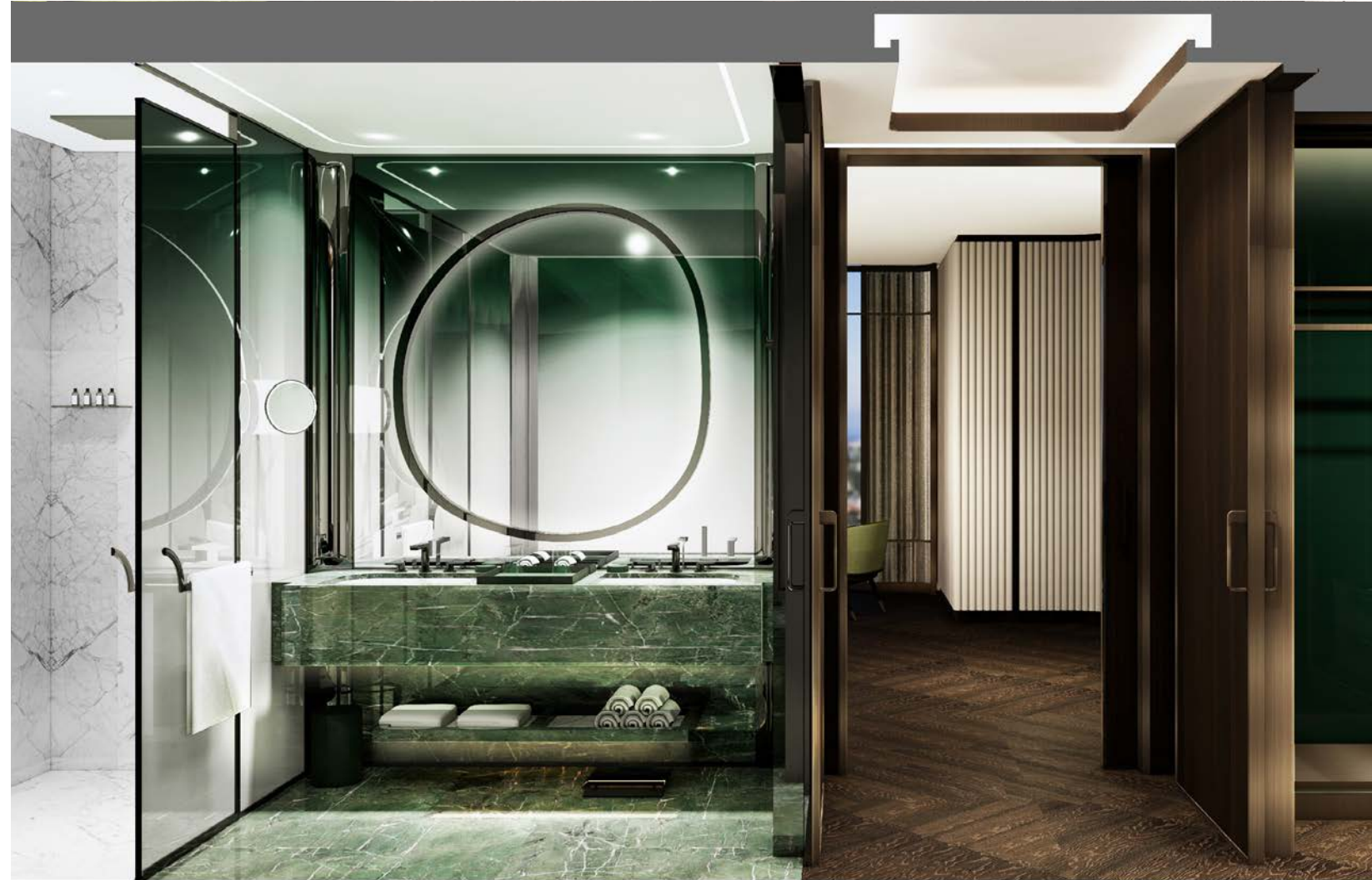
Suites at MGM Resort, Qingdao, CN



Presidential Suite living room. Next Page: Main Bedroom & Bathroom

**EXPLORE IN LIBRI**





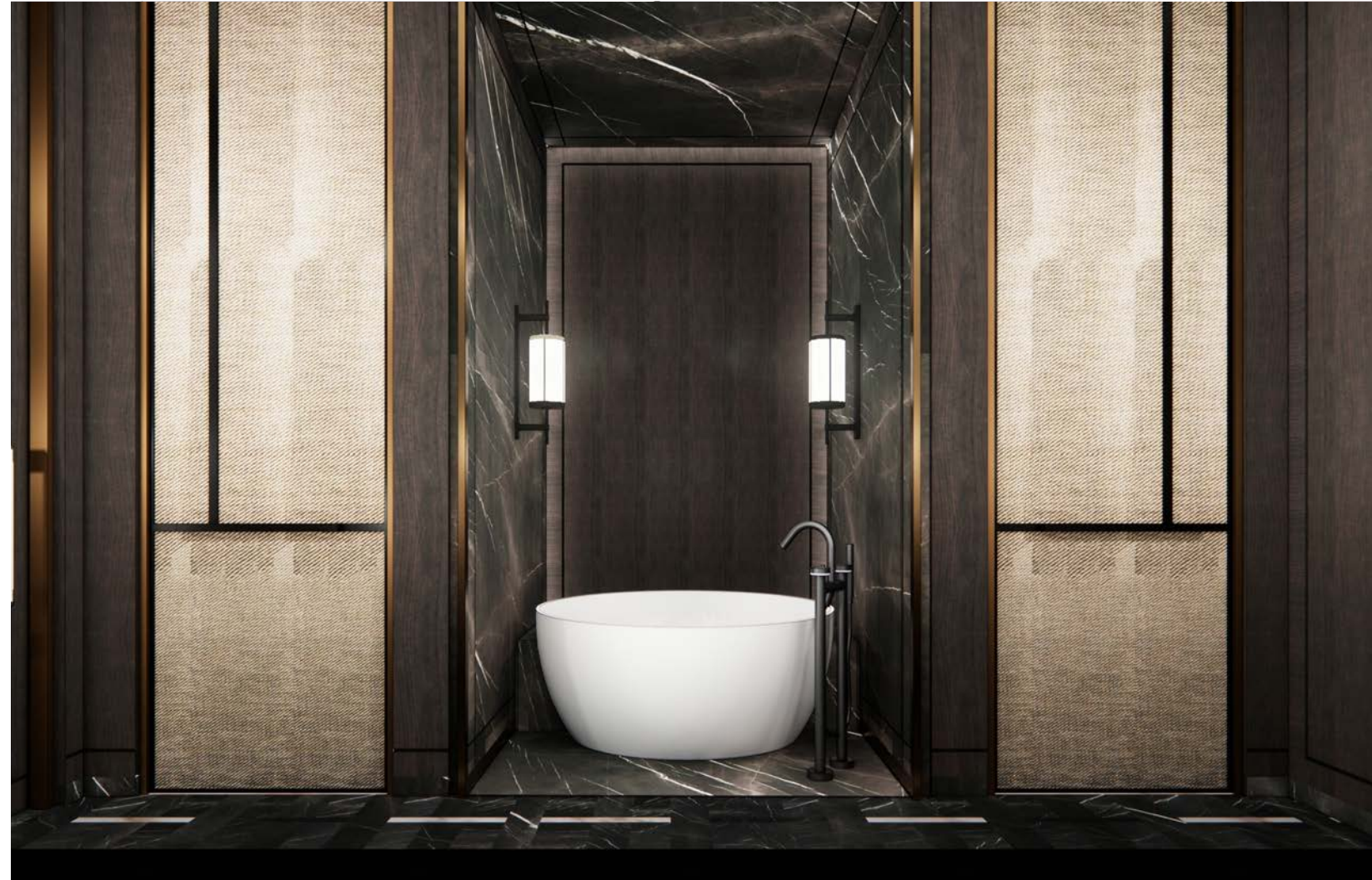
3 Bay suite living and dining. Next Page: Main bedroom & bathroom

Suites at Diaoyutai, Qingdao, CN



Chairman suite foyer & bar. Next Page: Main bedroom & bathroom

**EXPLORE IN LIBRI**



Suite living & dining. Next Page: Main bedroom & bathroom



## KYUR Identity

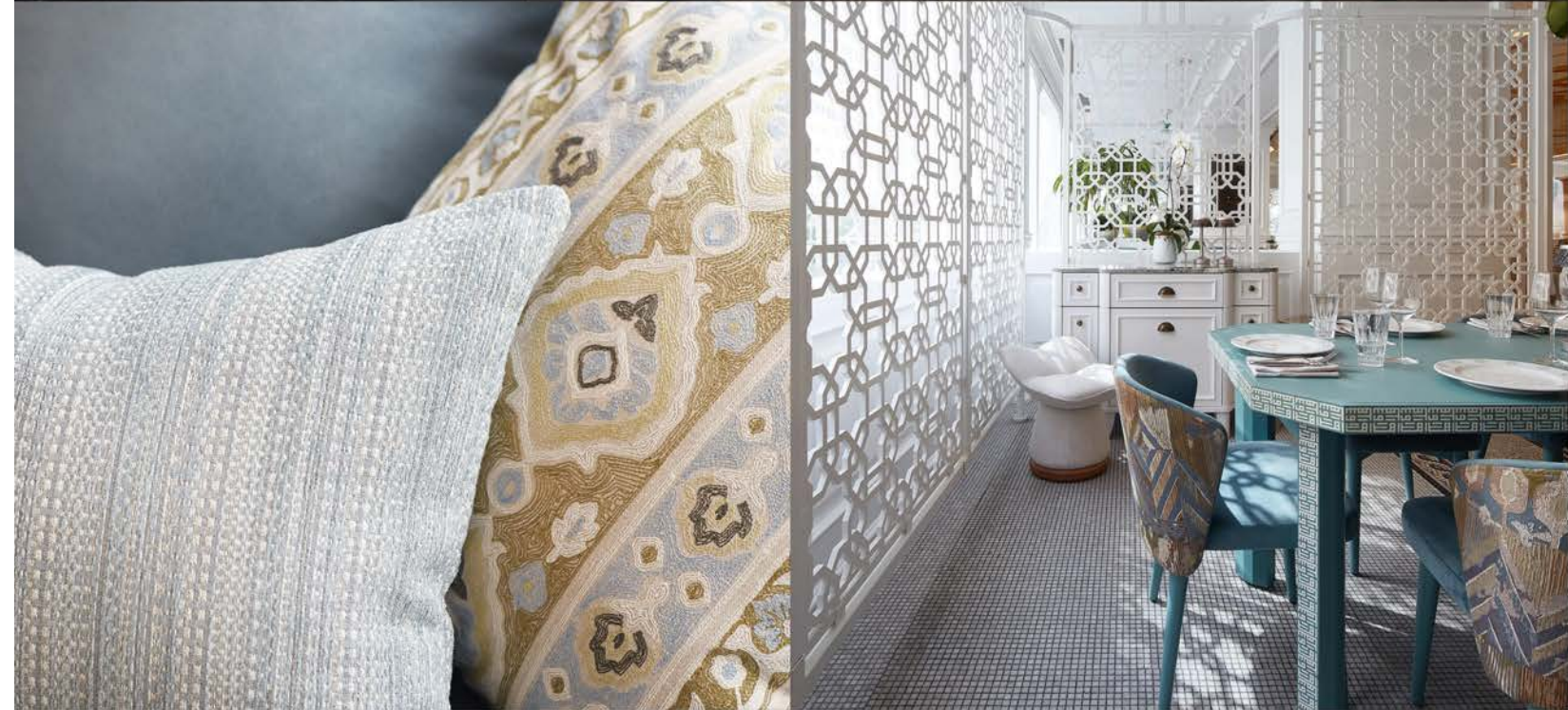


[WATCH VIDEO](#)



## MATERIALIZING DESIGN

With elegance, tact, and value, KYUR brings to life award-winning projects for world-renowned designers, visionary developers, and top-tier hospitality groups. Discover KYUR - a global procurement partner with boutique sensibilities.



### SUCCESS STORIES

## A new Definition to Procurement in Hospitality

"We've had great success working with KYUR over the years; Kristan and her team bring a new definition and expertise to Procurement in Hospitality. Their ability to deal with conflicts in a high-pressure situation is one of the many reasons they stand out."

[VISIT KYUR.CA](#)

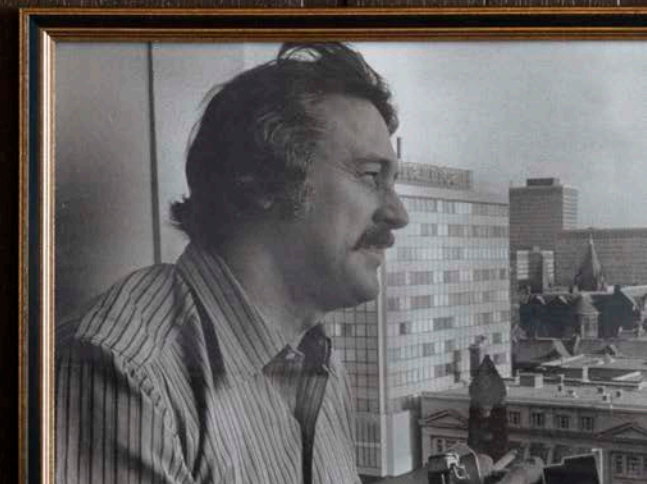


Behind the scenes art installation documentation



# ART *at Park Hyatt* TORONTO

WATCH VIDEO





Press Highlights



*“As brilliant as our designs can be, the quality of our work will always be as good as the bulb that illuminates the room.”*

***Control is ensuring that the littlest of details enhances our collective vision instead of diluting it.***

*And so, as projects open around the world this year, we must keep evaluating and learning what impacted the final project and constantly increase our attention to those details.*

*We must work together and be proactive in flagging potential deficiencies so that we precisely reach our target without veering from our original intent.*

***As a design collective, we also understand control isn't something we can achieve on our own.***

*We partner with experts in their field that understand, appreciate, and elevate our standards. Working in unison with those partners will be critical to reaching the next level of greatness.*

***I trust you will keep learning to involve those people every step of the way on our journey to design legacy.”***



*“The quality of our work will always be as good as the bulb that illuminates the room.”*

