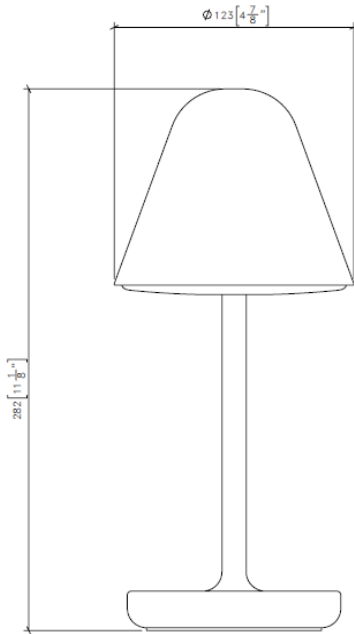


# OMBRA

## PORTABLE TABLE LAMP

OMBR-TLA-01-XX



Wireless battery powered portable table lamp with a metal shade and frosted diffuser designed for residential and commercial indoor / outdoor applications sold with charging dock.

**ENVIRONMENT:**  
Indoor / Outdoor

**OVERALL DIMENSIONS:**  
DIAMETER: 4 7/8" (123mm) x H: 10 7/8" (277mm)

**WEIGHT:**  
± 3.5 LBS (1.5 KG)

**MATERIALS:**  
Polished or powder coated steel, frosted diffuser

**PREASSEMBLED:**  
Yes

**CONNECTION TYPE & PLUG:**  
Charging dock with interchangeable plug end for use in North America, Europe & China

**DRIVER / POWER SUPPLY:**  
Supply Voltage 120V

**POWER & DIMMING:**  
ON/OFF Stepless dimmer from 100% - 0%

**BATTERY LIFE:**  
Up to 8 hrs (6hrs at 100% power)

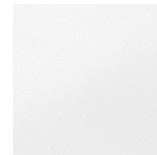
**BULB INFORMATION:**  
3 Watt LED COB 2400K

**CERTIFICATIONS:**  
ETL Listed

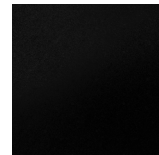


\* Specified finish may be different than that shown in image.

### STANDARD FINISHES



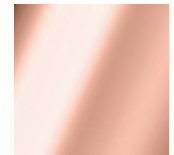
01 white



02 black



03 chrome



04 rose gold



05 gold

**ALESSANDRO**  
**MUNGE** SINCE 1970