

FORUM

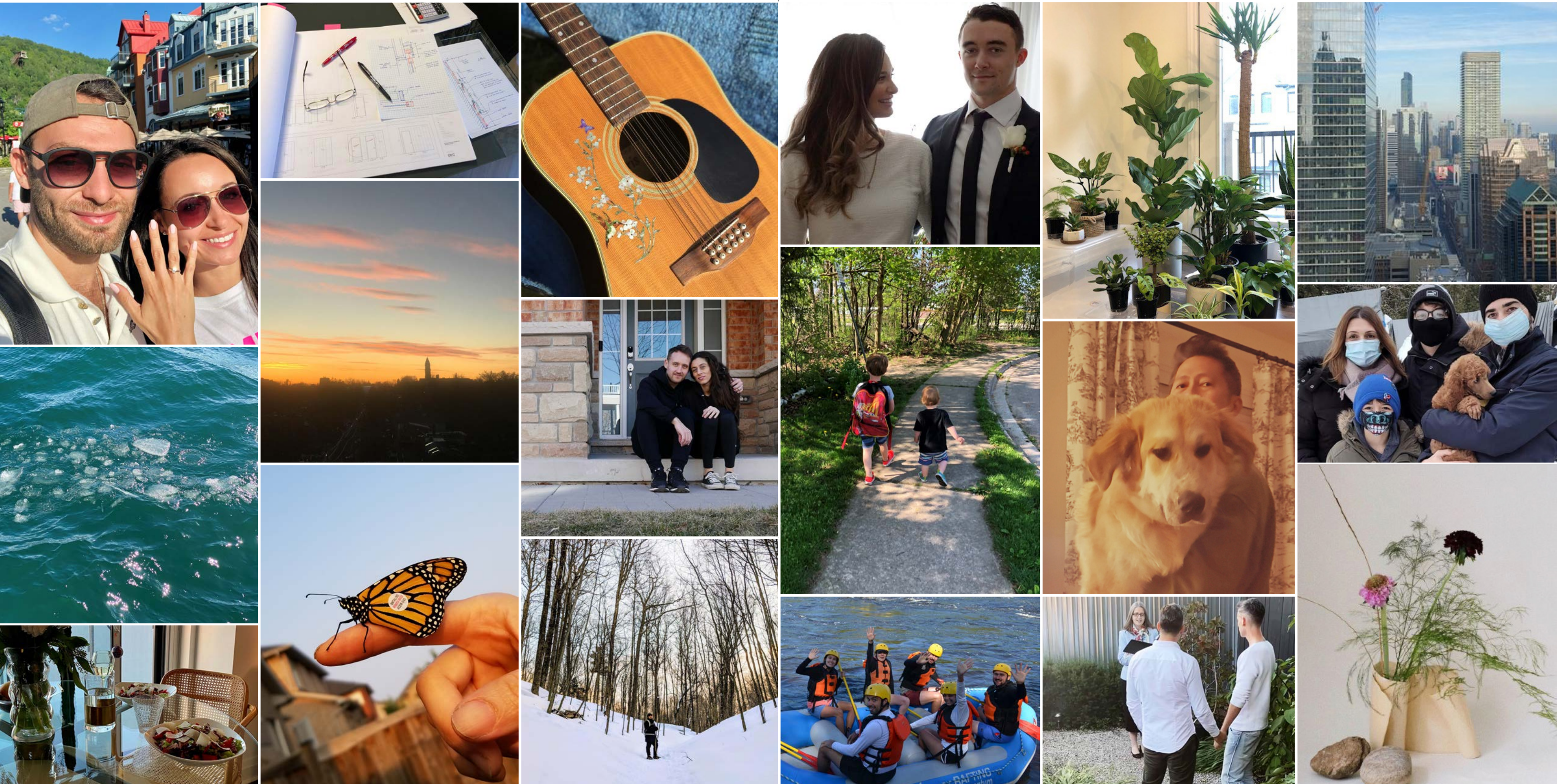
04.2021

STUDIO
MUNGE

“In the design world, every day comes with a new set of challenges to overcome. At Studio Munge, we thrive in that framework and choose to maintain a positive outlook in any situation. This optimism is a strength that enables us to find greater happiness during difficult times. We are hopeful with vaccination ramping up, but we have to remain safe and vigilant until infection numbers start going down significantly.”



Silver Lining



Silver Lining

“For me the silver lining has been that I have been able to make better use of my apartment.

This past year, I used my apartment in so many ways. As a Living Space, where I started to actually live and enjoy my home! As a Work Space in which I changed one of my bed rooms into a full office. Moreover, my dining room doubled up as a “PM Table”, where I checked drawings and produced DD sketches. As a Classroom: I took over sixty credit hours of project management webinars, without leaving my Living room! As a Restaurant, where I cooked way more often and resulted in eating healthier!” - Mehari



“I found silver lining in that I got closer/ made a lot of great memories with my family, I took up hold hobbies like playing the guitar and writing, and took up a new hobbies – gardening, discovering new recipes to cook and picnicing so I found my therapies and honestly I have never been so grateful.” - Ella



“After a year of killing a ‘few’ plants... I am happy to announce my little home jungle is growing.”
- Janice

“Family time increase and getting Ghost.” - Kinan



“My silver lining this year has been having the mornings at home with my family and being able to walk my son to school everyday. Here’s a pic of my little one Owen walking his big brother Eric to school.”
- Carly



“Koda.”
- Edwin

“Planning sometimes seems futile in a state where we are living day to day in the unknown. So for me the focus has shifted from reaching destinations in my life to just focusing on the journey instead and living more mindfully in the present. Capturing life as it is now. Like ice floating on water until it melts and becomes part of flowing water. I captured this picture on one of my walks where I was thinking of everything and nothing. Thought I’d share this as it resonates with what this pandemic has been like for me. Consuming, constantly shifting, but nevertheless floating through things like fragile ice on water.” - Shraddha



“Last year, I started to take pottery classes and practiced Japanese Ikebana flower arrangements on the weekends. With all my love and passion for the Nobu Restaurant project, I made a vase inspired by “The Great Wave”
- Serena



Silver Lining



“I got engaged in Mont Tremblant this summer. It was an incredible experience.” - Stan

“With the Monarch tagging program, we have a great experience and interaction from raising the butterflies from egg to releasing the beautiful monarch.” - Joyce



“Low-key date nights at home.” - Stephanie

“I moved to a new apartment back in December that has big windows and lots of light. I am very grateful to see gorgeous Toronto sunsets from my balcony every day. It has been a great reminder to pause and be present in the moment.” - Anna



“A picture that defines moments.” - Enrico

“My wife and I reconnected with nature and were able to hike a whole bunch of the amazing trails around Southern Ontario.” - Jonathan



“Last summer I had the opportunity to go white water rafting. This still stands out as a highlight for me as it was an opportunity to get outside, feel alive and live in the moment... all while creating and strengthening valuable friendships. (For what it's worth, we were all tested before embarking on this group journey).” - Chris



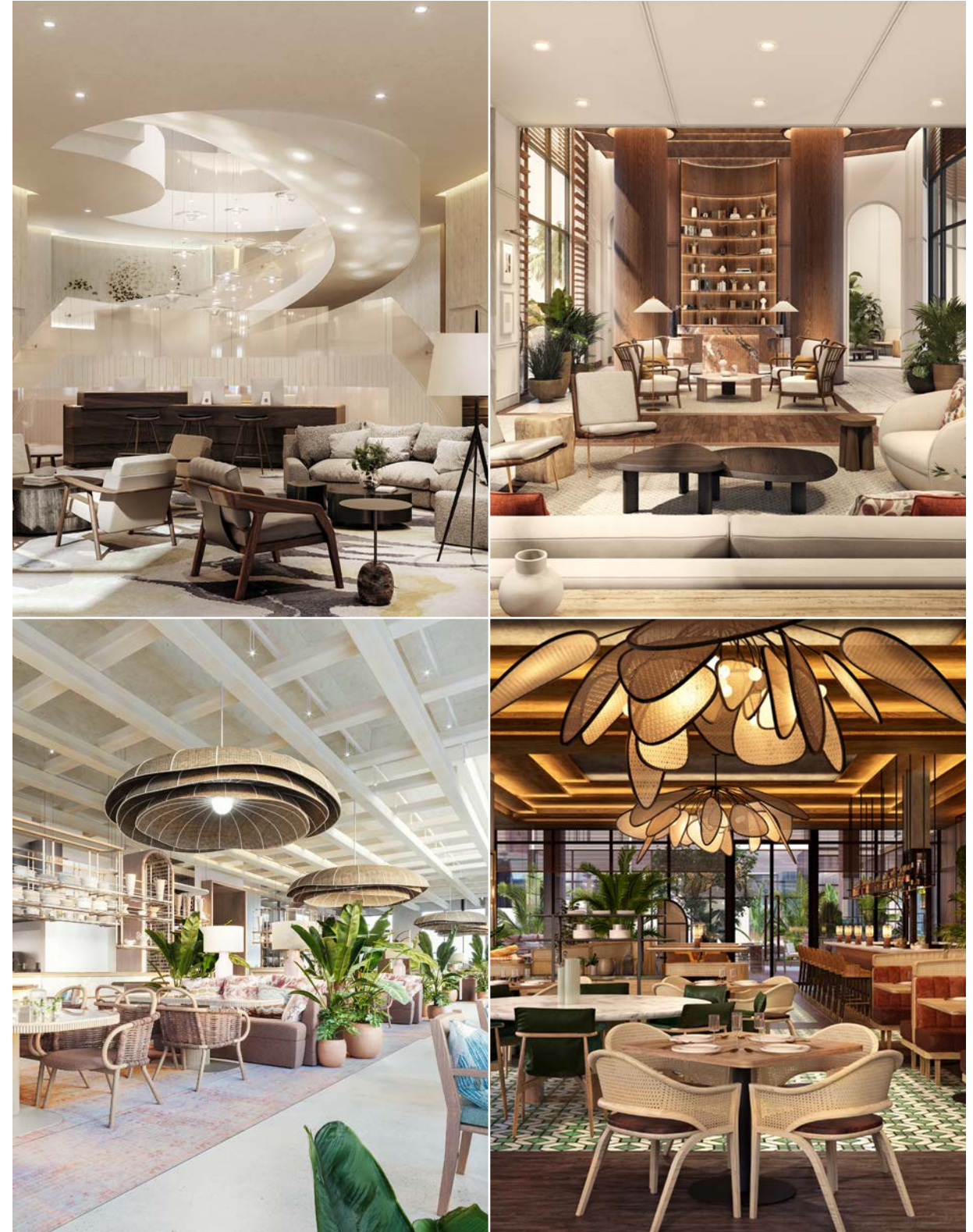
“My husband and I have done some crazy things since the pandemic started. We got engaged in June of 2020, I then made the move to SM (yay!), got married in December, and at the beginning of March we bought a house!” - Alex

“This pandemic was the biggest turning point in my short existence. At a time when many people are going through a time of great difficulty, I have been incredibly lucky to be able to make my dream come true.

I left my country, my job, my loved ones and everything else I know to throw myself into a new adventure to start all over again. I am so grateful for all the wonderful people I have met here, for all the hands that have been held to me, the joyful moments that I have shared with my new friends, the sincere kindness and trust that this new job offers me. I was afraid of being alone and isolated, I don't think I have felt so surrounded by people since I left. It just goes to show that friendship and care has no borders. I am grateful to be happy, fulfilled, healthy, surrounded by amazing people, in the agency and the city of my dreams. I wake up every morning turning on the music and dancing while preparing my breakfast.” - Noémie



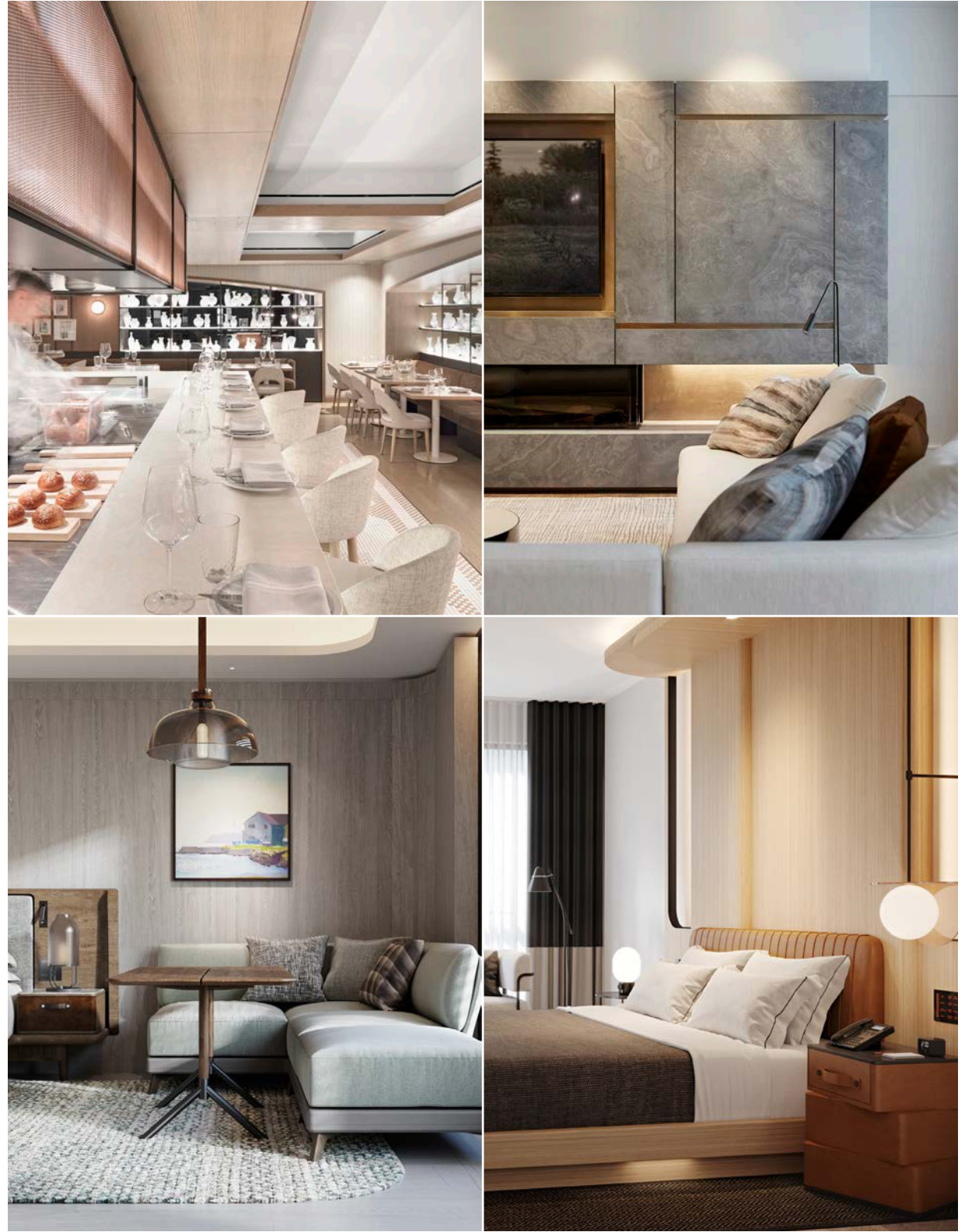
*“If I have seen further, it is by
standing upon the shoulders of giants.”
- Sir Isaac Newton*





*“Sell your cleverness
and buy bewilderment.”
- Rumi*

Priscilla Lee, Senior Designer

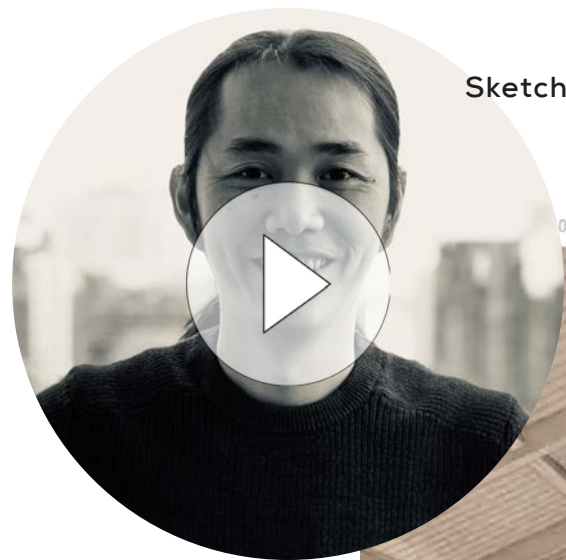




“We are that added layer of tactility and layering, pushing the project to the next level, while balancing a sense of timelessness with a never been seen approach.”


Stephanie Kruschen, Lead FF&E Designer





Sketch Up Presentation by Huy Nguyen

The screenshot displays a 3D architectural rendering of a modern interior space, likely a lounge or office area, featuring a high ceiling with exposed wooden beams and large windows. The rendering is being presented using the Enscape engine, which is overlaid on the SketchUp interface. The Enscape window shows various settings for the Atmosphere, including Sun Brightness, Night Sky Brightness, Shadow Sharpness, Moon Size, and Artificial Light Brightness. The Windows taskbar at the bottom shows the time as 11:19 AM on 3/2/2021, and the system tray includes icons for network, volume, and power. The presentation is being shared via a video call, with a list of participants visible at the bottom: Jenna Ha, Lauren Denby, Coco Lam, Wryan Jeong, Zoya Yahya, Justin Shih, and Huy Nguyen.



“There are three responses to a piece of design - Yes, No and WOW! The latter is the one to aim for. Design should be bold and brave; it has to make an impression.”


A jazz aficionado and piano player, Elmira is an astute designer who has completed three masters in Architecture Engineering, Sustainable Design and International Business. With a strong sense of aesthetic, her passion for Couture, Italian Renaissance and cultural travels are only matched by her desire to bring forth high-impact, memorable design.

“There are three responses to a piece of design - Yes, No and WOW! The latter is the one to aim for. Design should be bold and brave; it has to make an impression.”

Beyond inspired by the people she has met along her journey from the Middle East to Canada, Elmira admires Nature and the Water element - *“River, Sea, Ocean. No need for*

any introduction, their power is obvious.” This dynamic source of inspiration is palpable in all her projects, including Studio Munge’s most exclusive residential projects such as 138 Yorkville in Toronto and 1650 Alberni in Vancouver.

Beyond a remarkable designer, Elmira is a supportive team member who welcomes challenges as a learning opportunity and a way to strengthen the connection with her peers. Her multicultural sensibilities and dedication have enabled Elmira to seamlessly integrate within our team and continuously deliver relevant solutions embodying Studio Munge’s highest design standards while always meeting our clients’ operational needs.



"I care about and take great pride in creating beautiful floorplans from all perspectives. When balanced, it inspires the eye, it resonates and creates a deep sense of satisfaction."

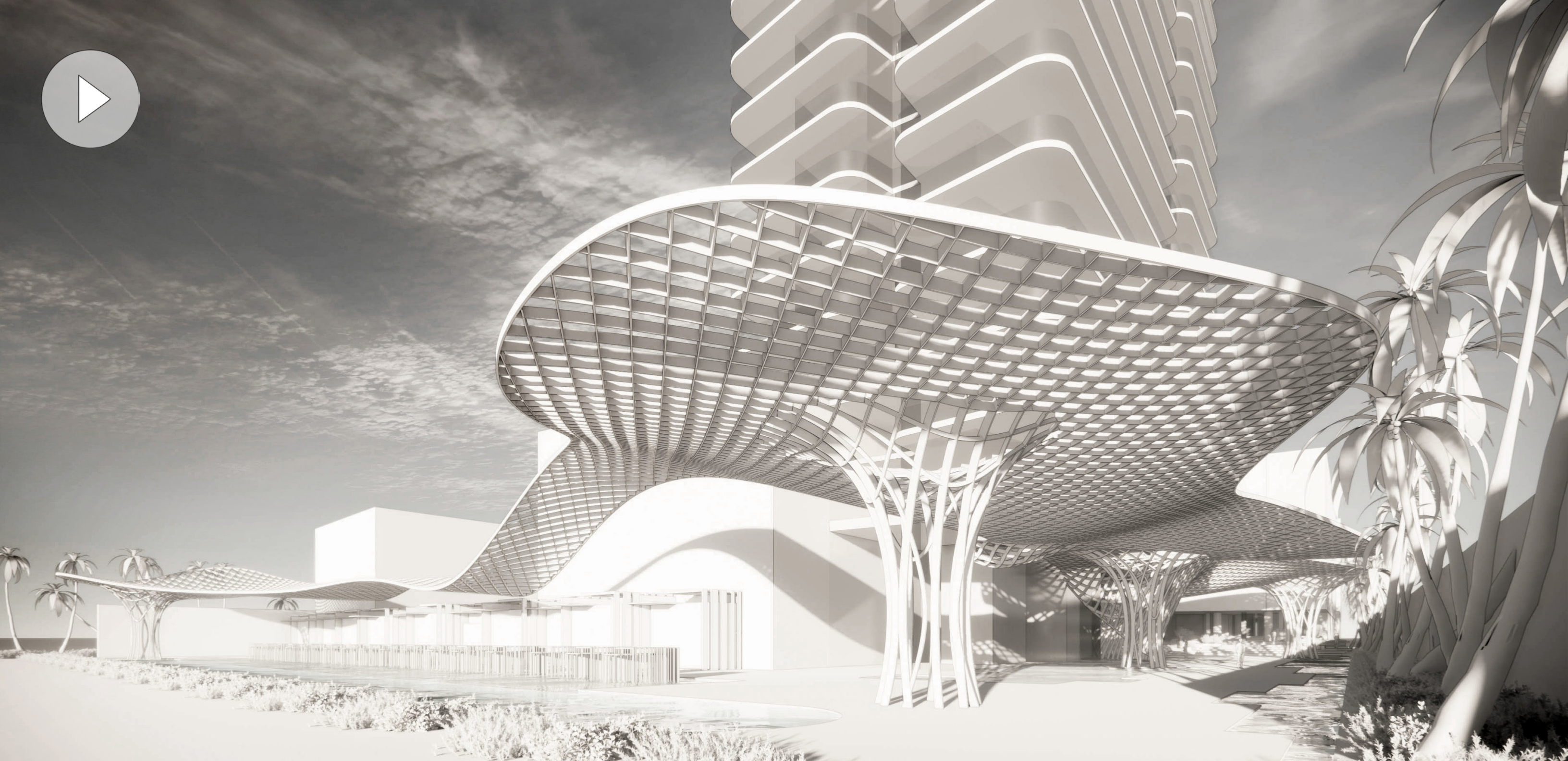
A multi-award-winning creative who finds great satisfaction in harmonious planning, Julian is a well-travelled senior designer and a citizen of the world who has resided in Seoul, Hong Kong, Brussels, Geneva, and New York City before reaching Toronto.

Having contributed his talents to reputable design firms such as Yabu Pushelberg, Julian brings over 20 years of design expertise to Studio Munge where he delivers thoughtful and impactful solutions while mentoring the next generation.

"I care about and take great pride in creating beautiful floorplans from all perspectives. When balanced, it inspires the eye, it resonates and creates a deep sense of satisfaction. I find happiness

in the smallest of things; it is about appreciating the moment and the blessings."

Passionate about urbanism and architecture, Julian mentions Paris as his favourite city - a reference representative of his love for precise detailing noticeable in all his work including his most recently appointed projects: a Tribute hotel facing the iconic Javitz Centre in New York City, and a boutique hotel in Canada's celebrated Niagara region. More than a talented designer, Julian is a diligent, dynamic spirit that impeccably embodies Studio Munge's standards of excellence and hospitable approach to design.

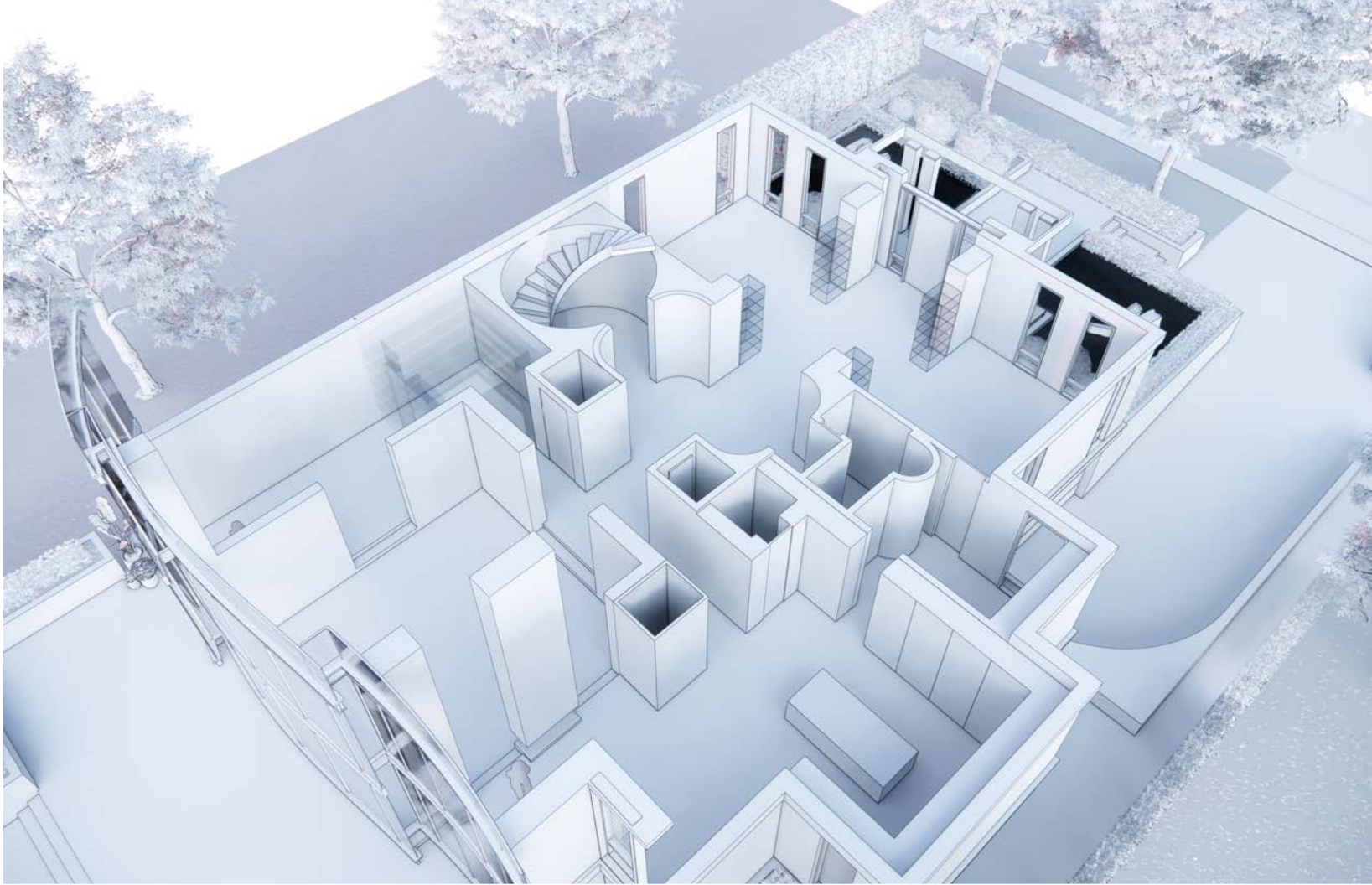


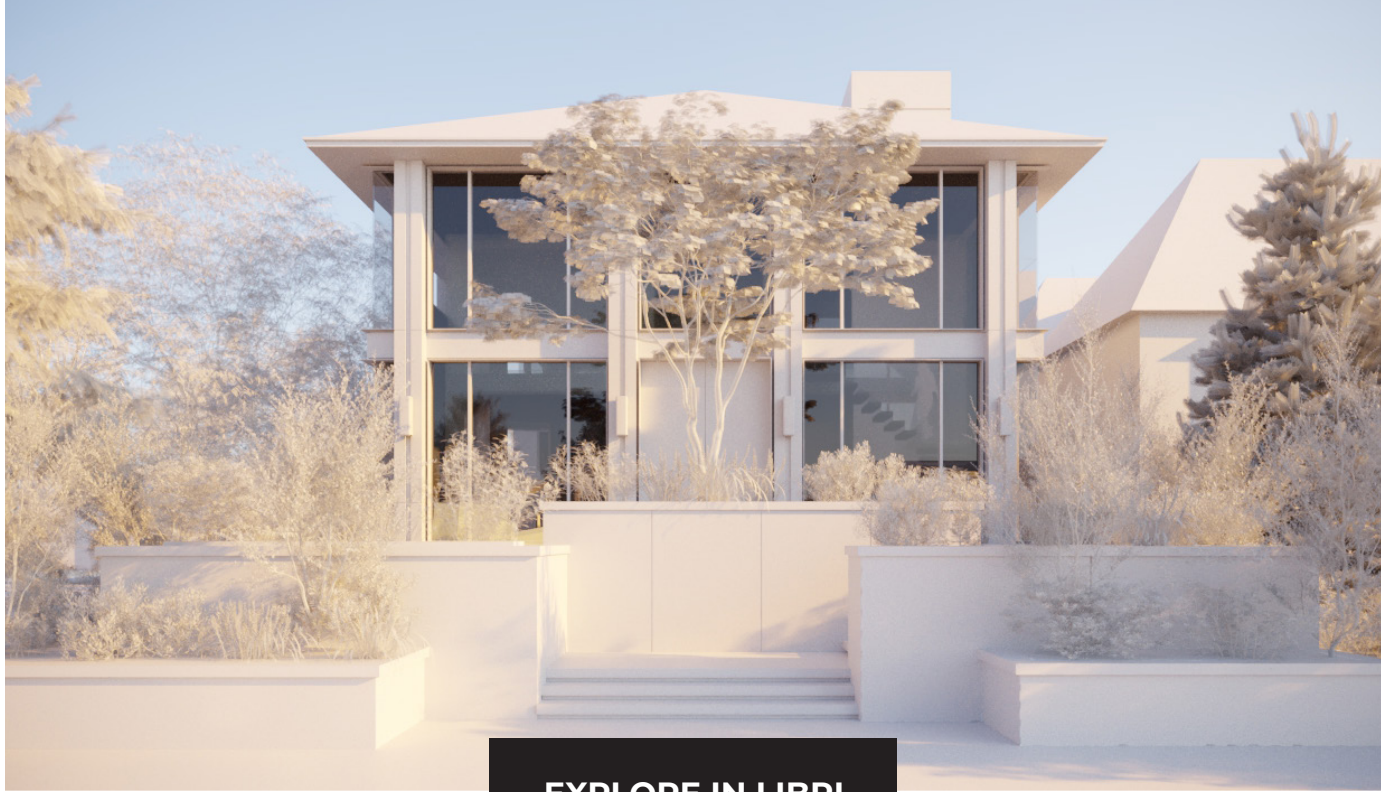
EXPLORE IN LIBRI





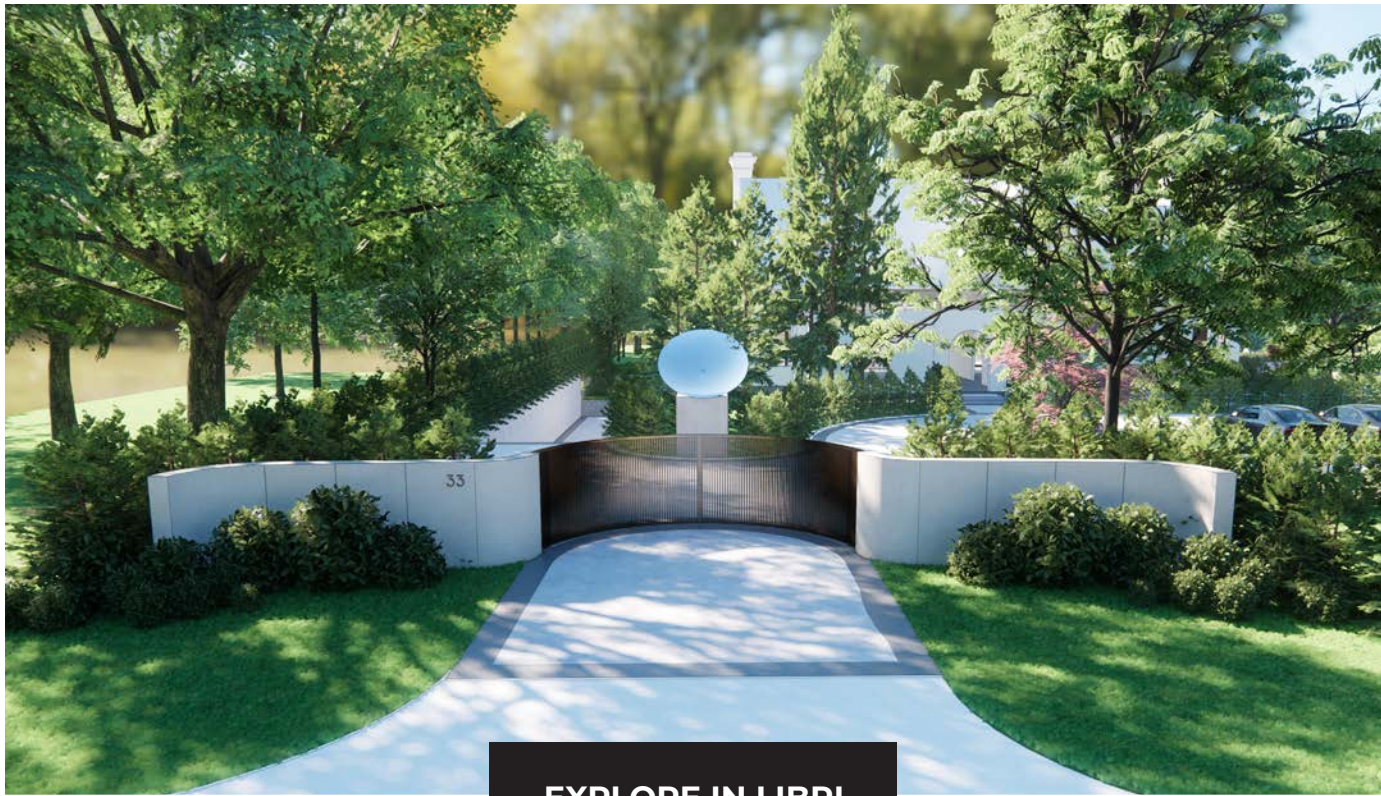
EXPLORE IN LIBRI



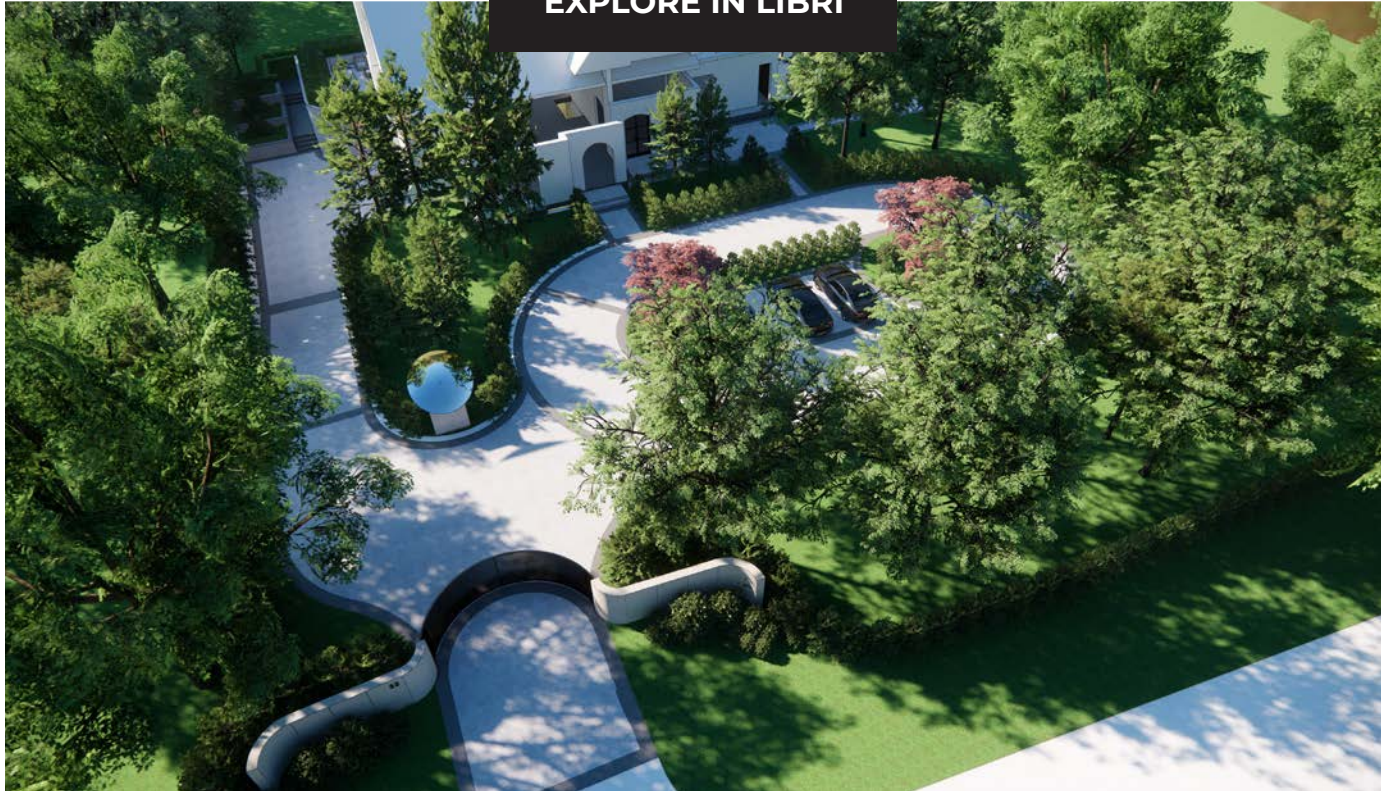


EXPLORE IN LIBRI



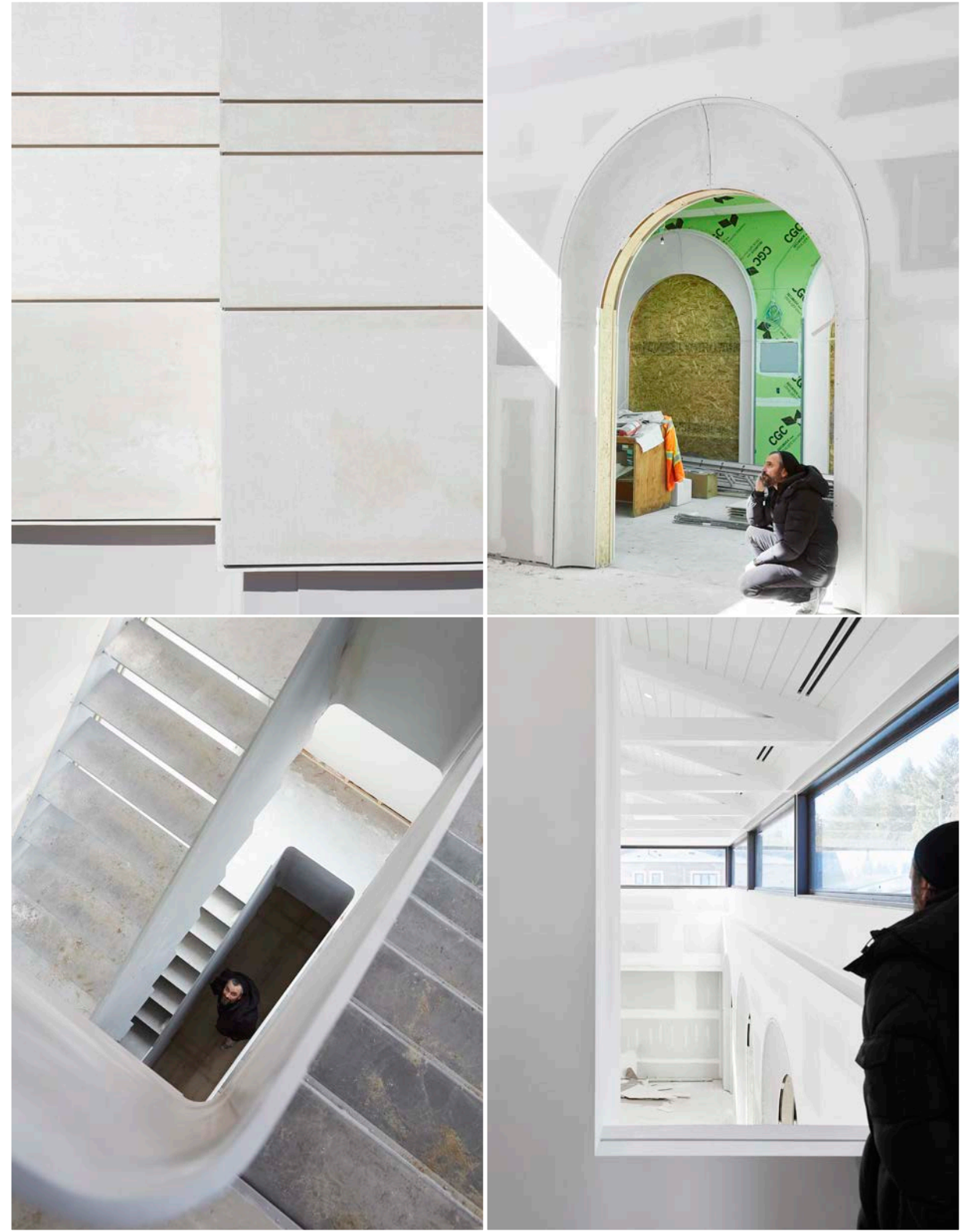


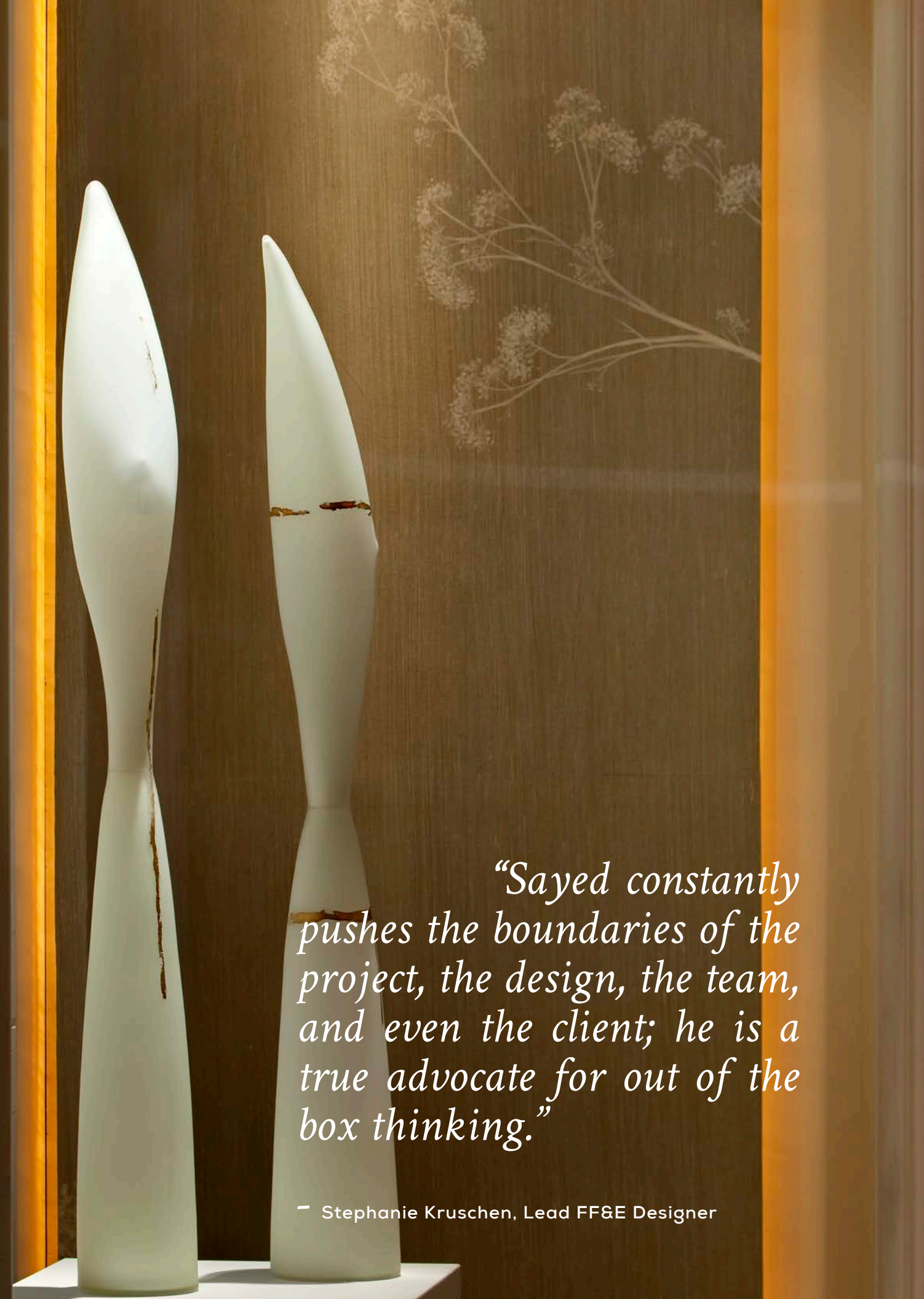
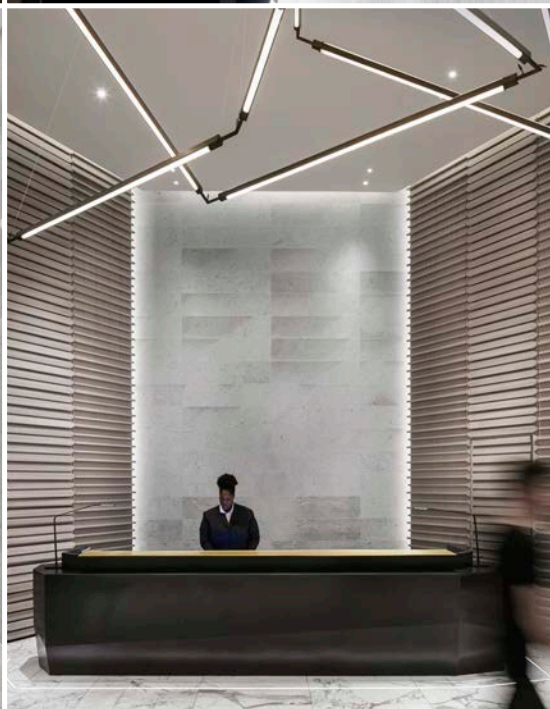
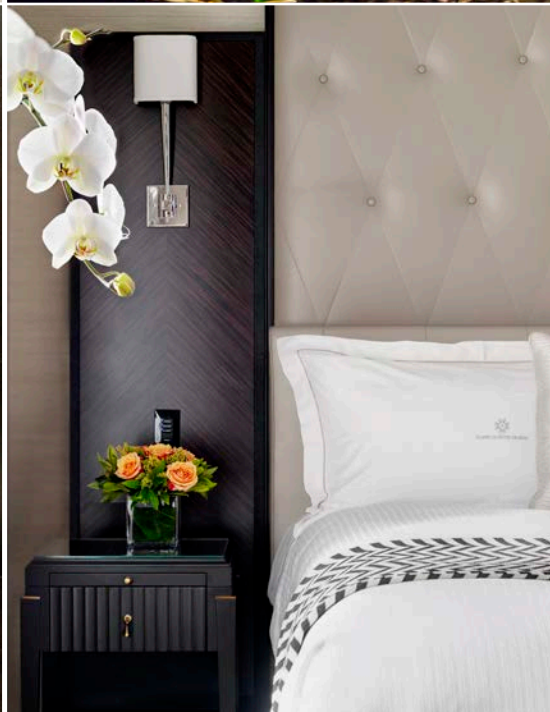
EXPLORE IN LIBRI





EXPLORE IN LIBRI





“Sayed constantly pushes the boundaries of the project, the design, the team, and even the client; he is a true advocate for out of the box thinking.”

— Stephanie Kruschen, Lead FF&E Designer



Sayed Shakour, Director of Private Residential

“ After 15 years of developing some of Studio Munge’s most iconic hospitality projects with Alessandro, it’s an incredible honour to now lead the new private residential division, marking a new era for the company and myself.

From our incredible team, you will discover a completely fresh and experiential approach to residential design, redefining the concept of luxury and a new generation of residences.”



This Page: Sense of Arrival & Porte Cochere; Outdoor Amenities ft Terraces & Cascading Pools.



Ground Floor Lobby Lounge ft Circular Skylight.

“*Wellness and resort living* also belong in *urban centres*. Applying the *clubhouse* model often used in our Asia projects, condominiums become a sought-after and sustainable *alternative* to single dwellings by offering a *wider amenity range, relevance and flexibility*.”



This Page: Indoor Pool Main View & Vignette. Next Page: Meditation Lounge & Fitness Pods



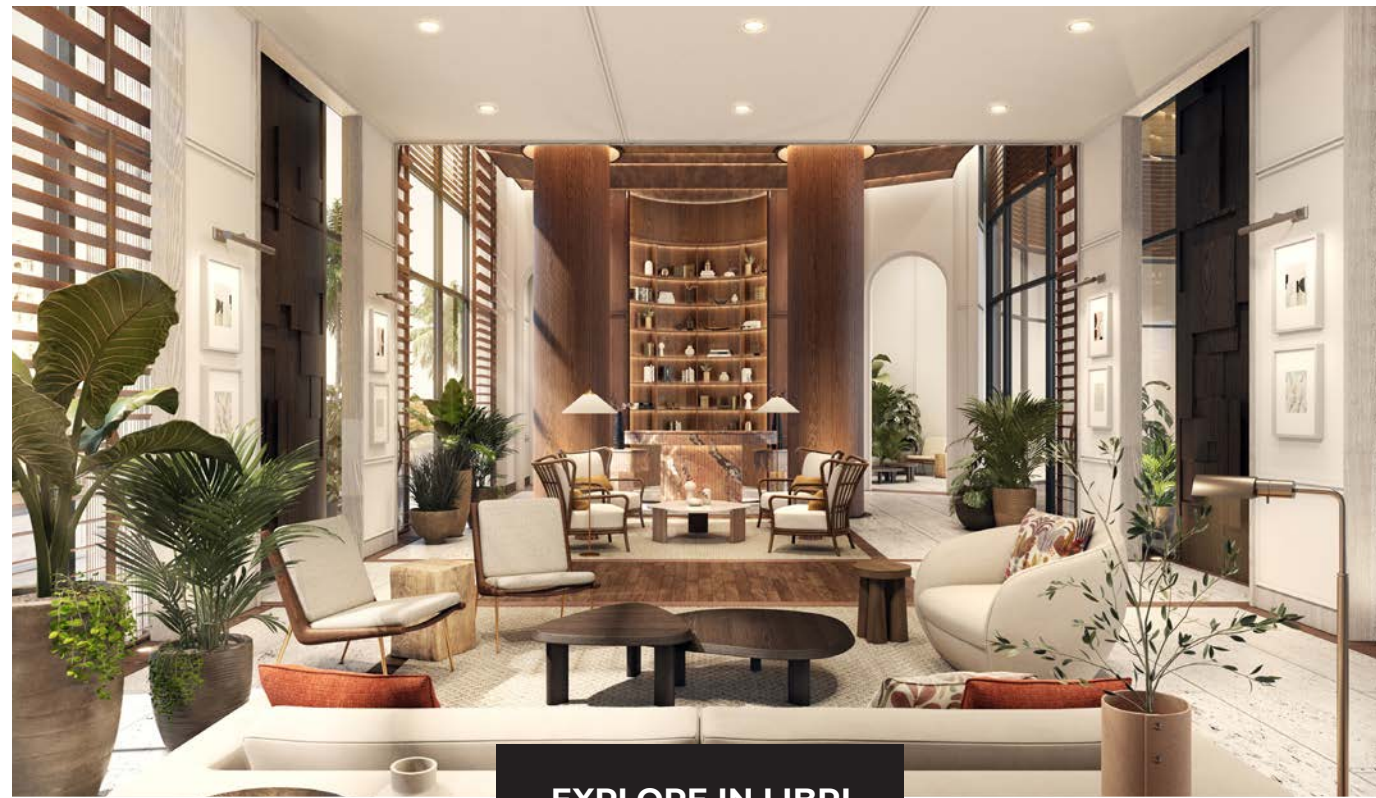


42nd Floor Clubhouse.



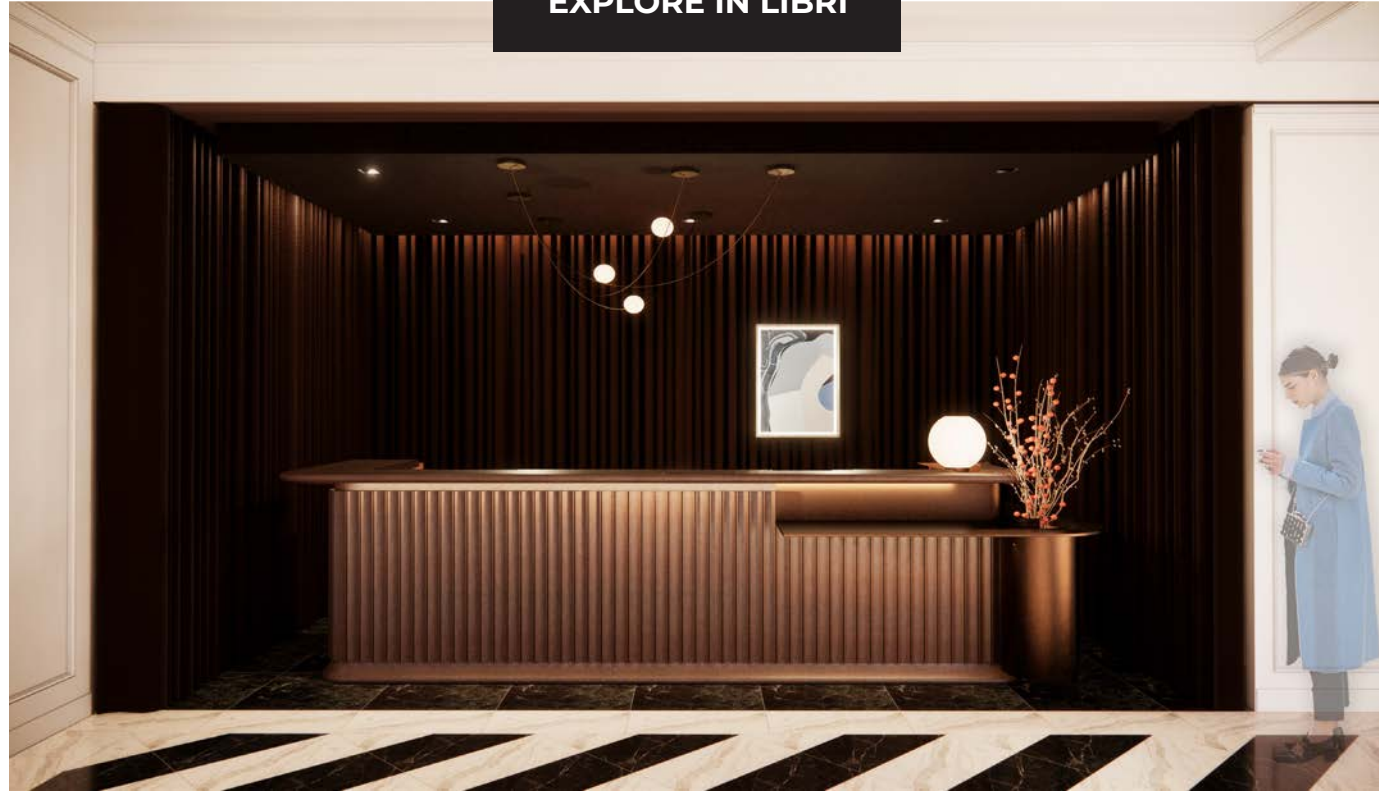
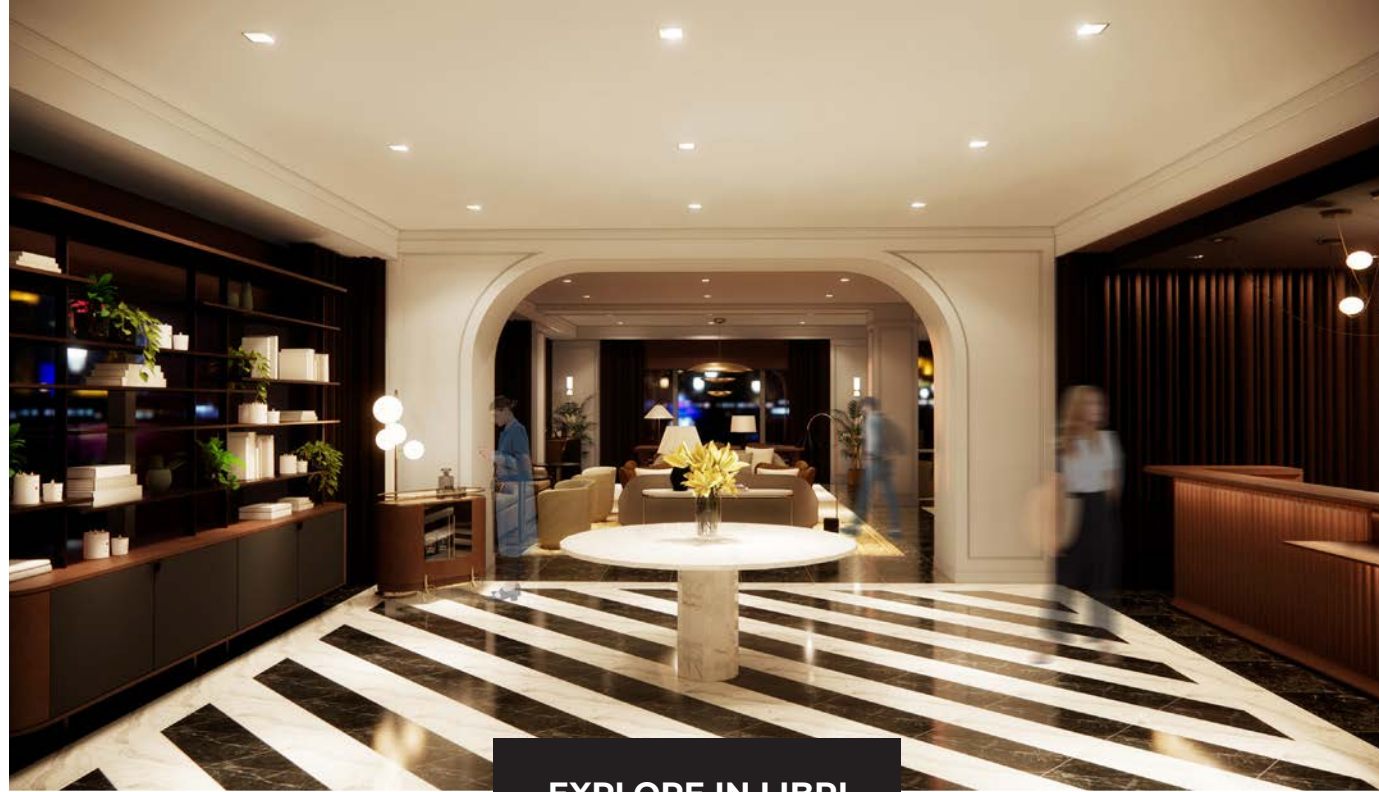
Clockwise: Dark Scheme Kitchen ft integrated storage;
Bathroom dark Scheme
Previous page: Flexible Work Spaces





EXPLORE IN LIBRI





*“Brooke,
I meant to reach out to you yesterday
and just say how impressed I was
with how you handled that awkward
situation on the call. No one else was
ready to deal with the outburst and you
stepped up to diffuse the situation.
This also gives me the opportunity to
let you know how much I like working
with you and your team. It has been
great and I am really looking forward
to another project that isn’t so fast and
frenetic!”*

- Kimberley Harley, VP Architecture & Design, Montage International

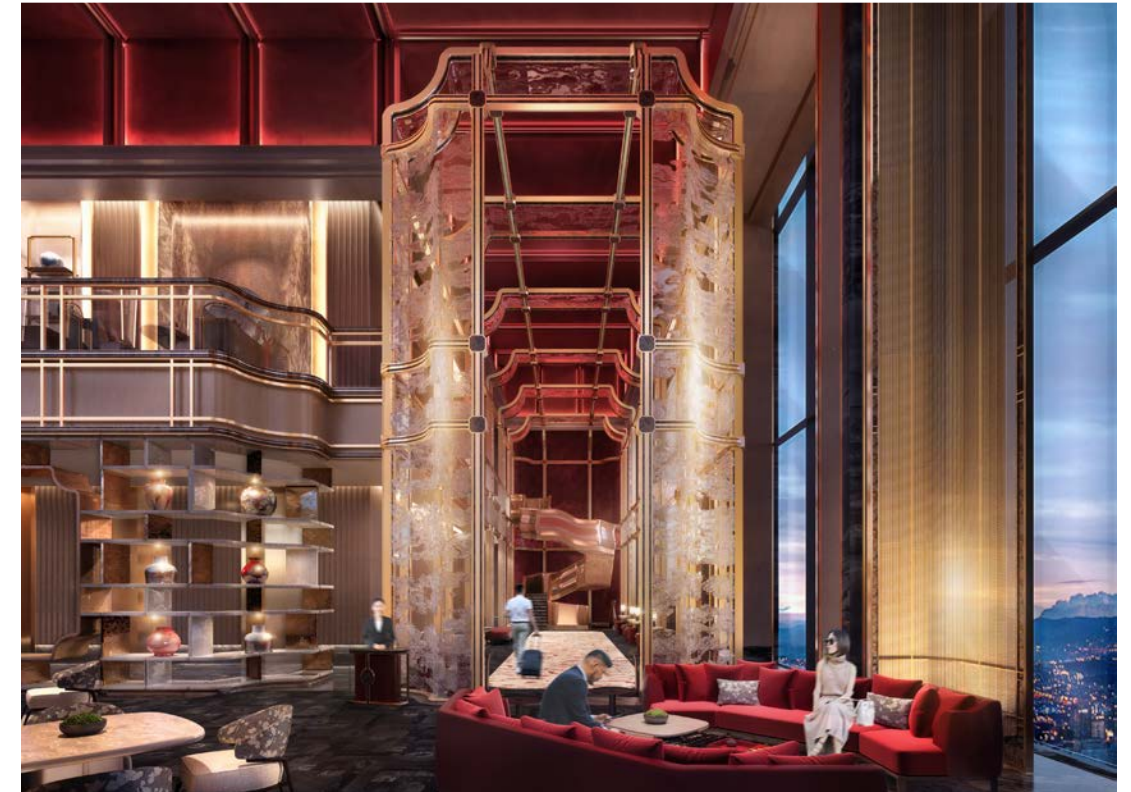


EXPLORE IN LIBRI



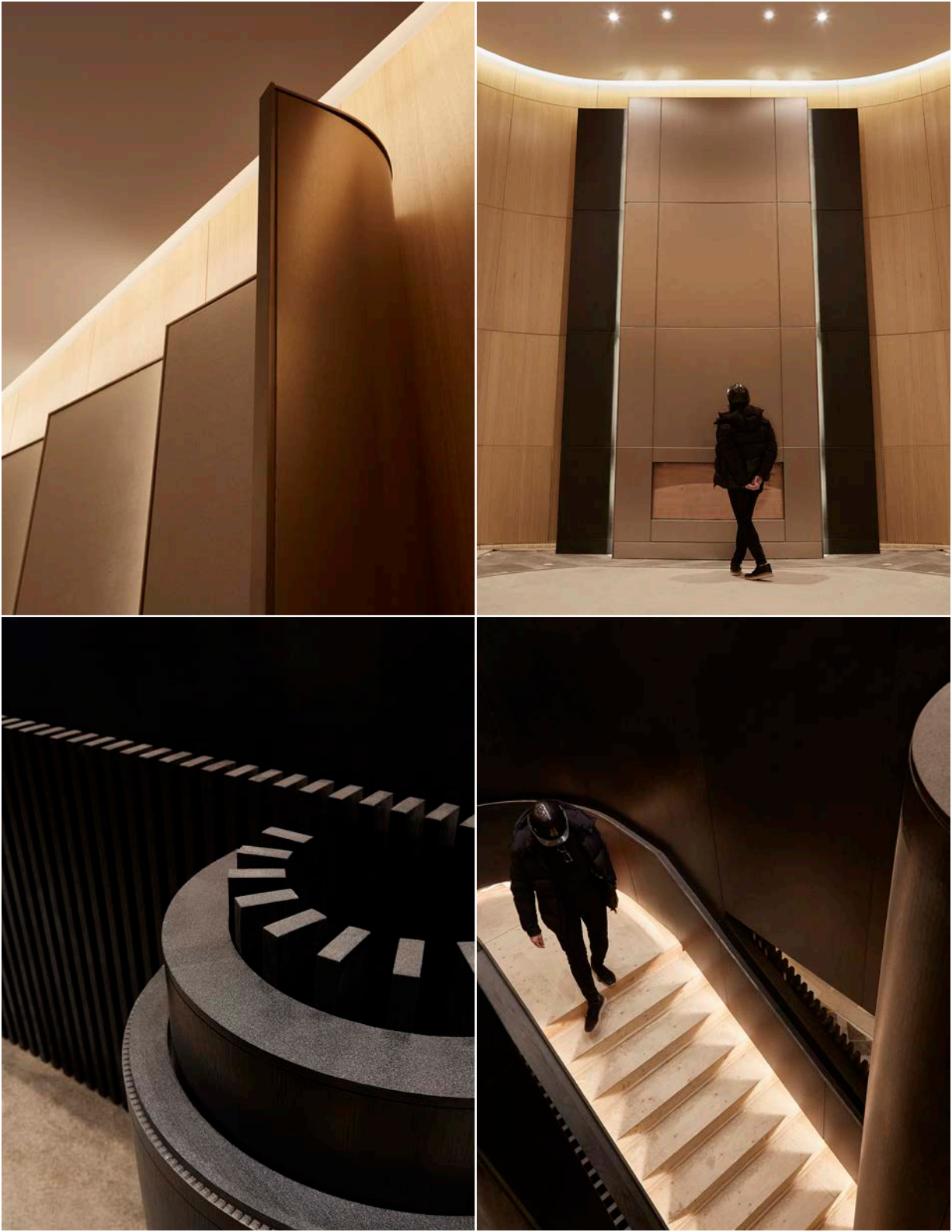


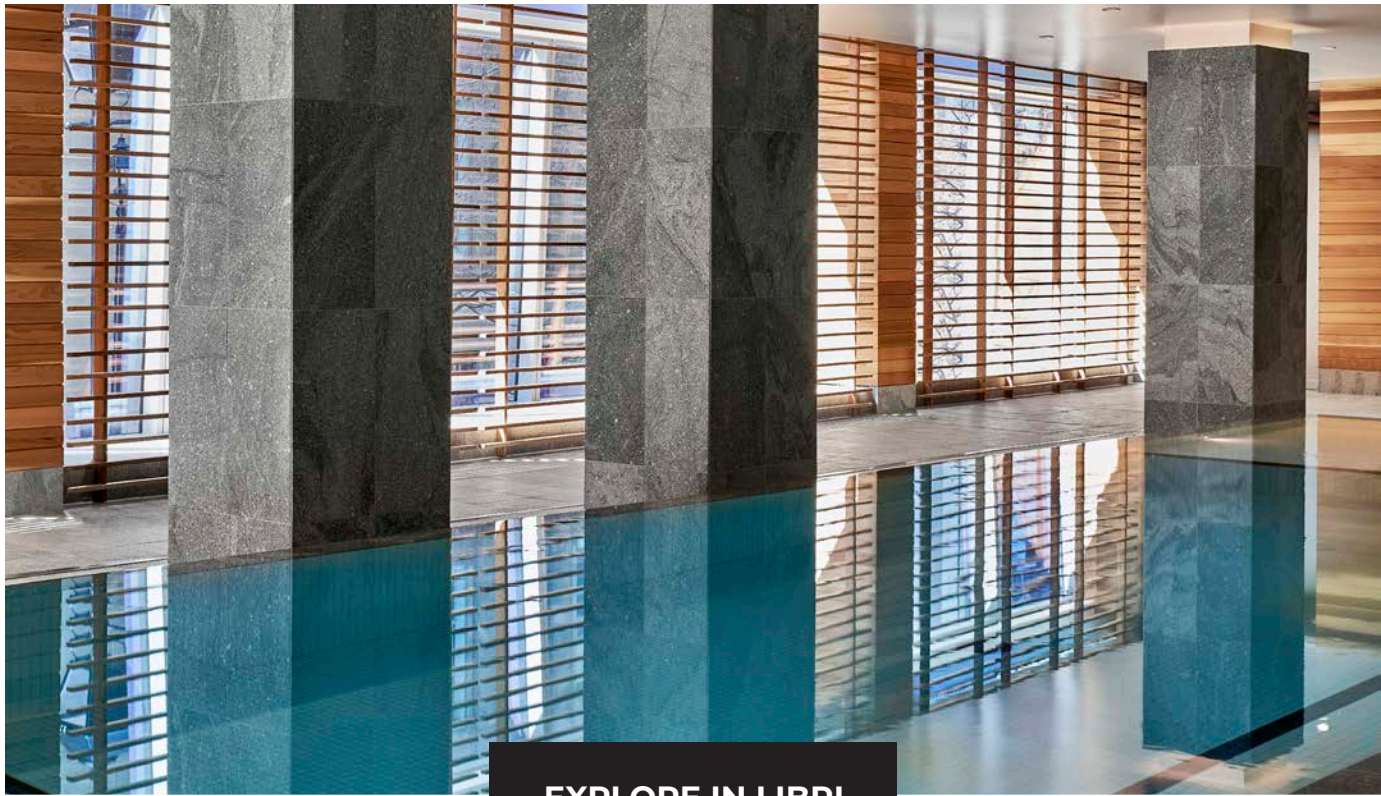
“It’s a sad but beautiful ending to a lovely saga. The design deliverable submitted by Studio Munge features a complete and smooth functional layout and circulation, presenting a modern, fashionable hotel that belongs to Qingdao, with international style; which is both noble and warm, elegant and cheerful. It is in line with the positioning of an ambassador’s statehouse, and will surely become the first choice for urban elites and new urbanites in the future.”



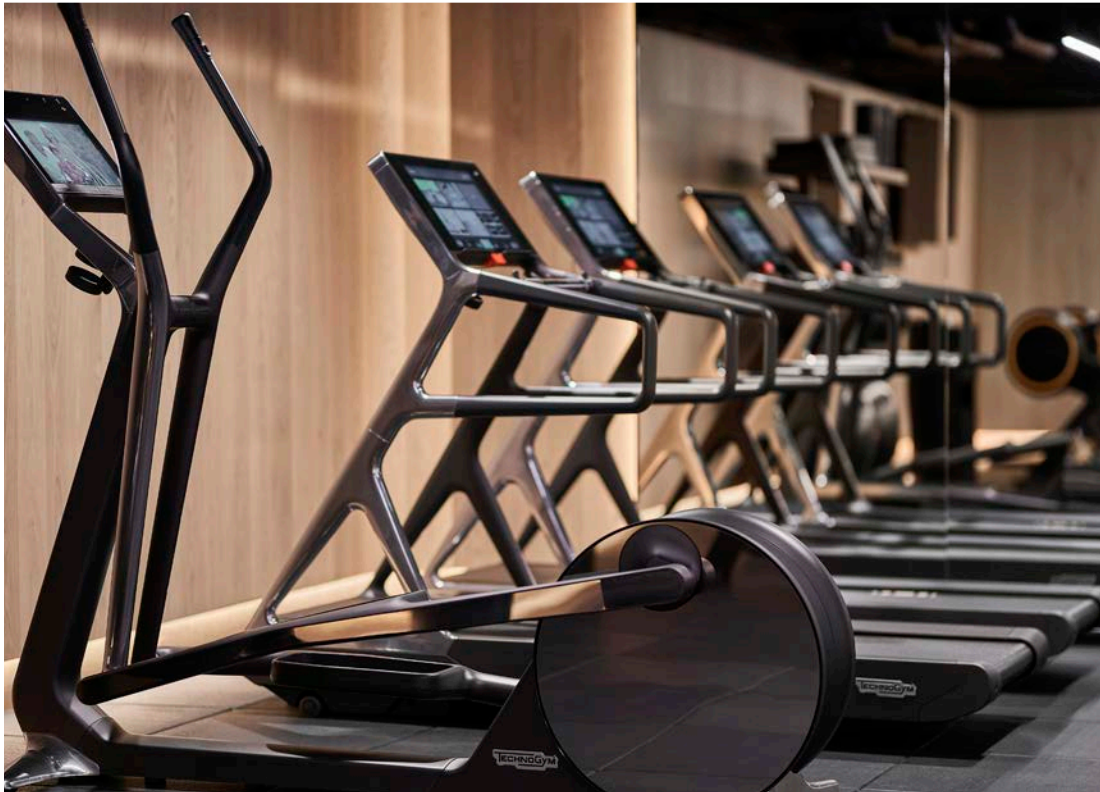
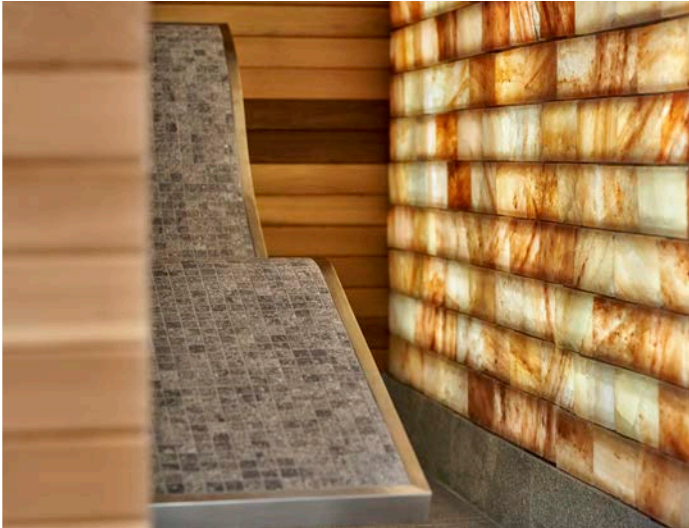
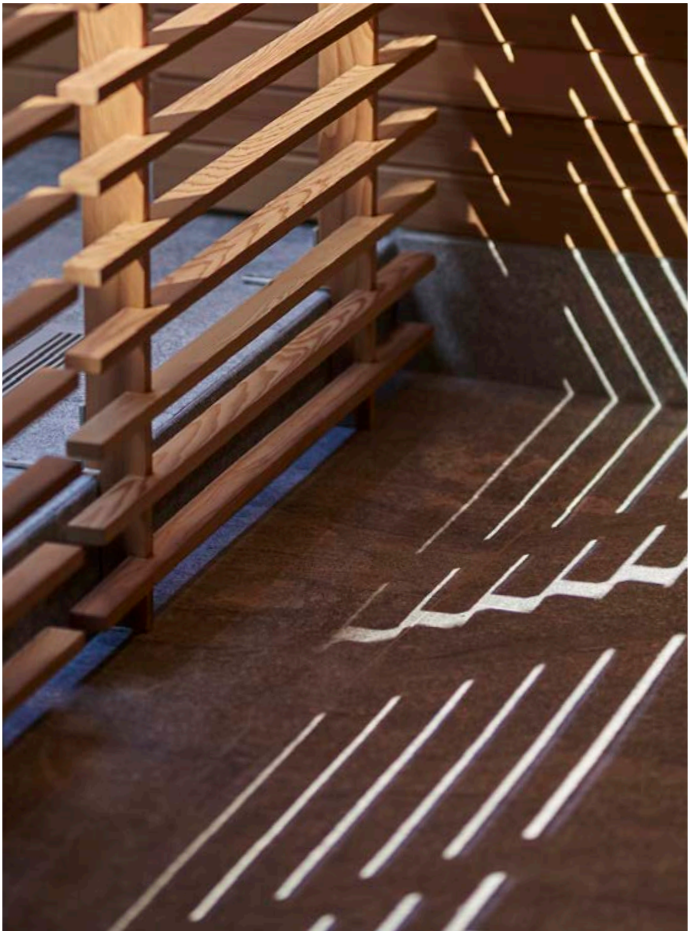








EXPLORE IN LIBRI



REWRITE THE *RULES*

•

ALESSANDRO
MUNGE SINCE 1970

EXPLORE IN LIBRI

INTRO

“Our responsibility is to give *unique* design solutions that are *honest* and *relevant*. No formula that will force us to do the same thing over and over because, in my world, I call that insanity.”

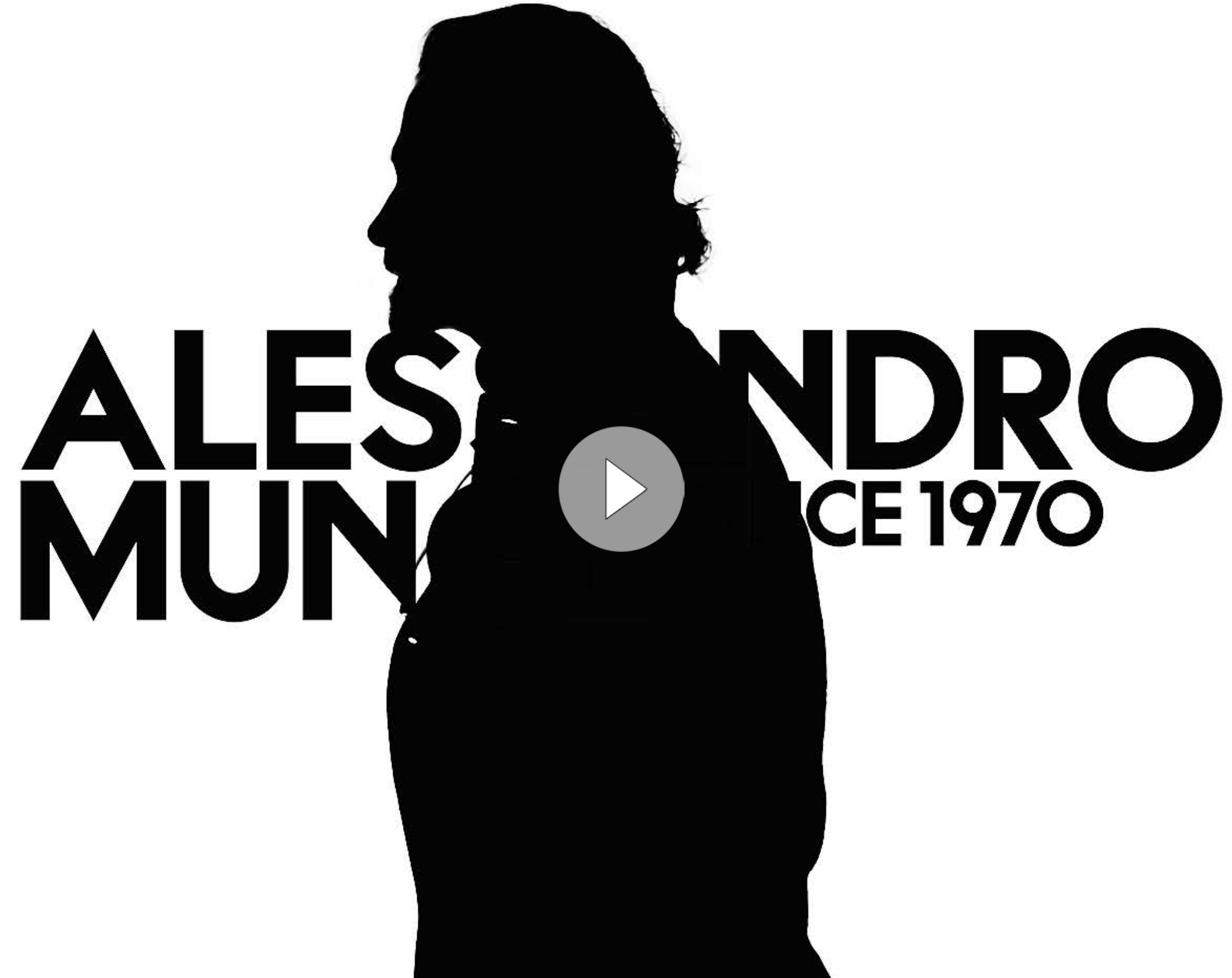
~~INTERIOR~~ — DESIGN
EMOTION — ~~FORM~~ —
~~FUNCTION~~ — *PURPOSE*

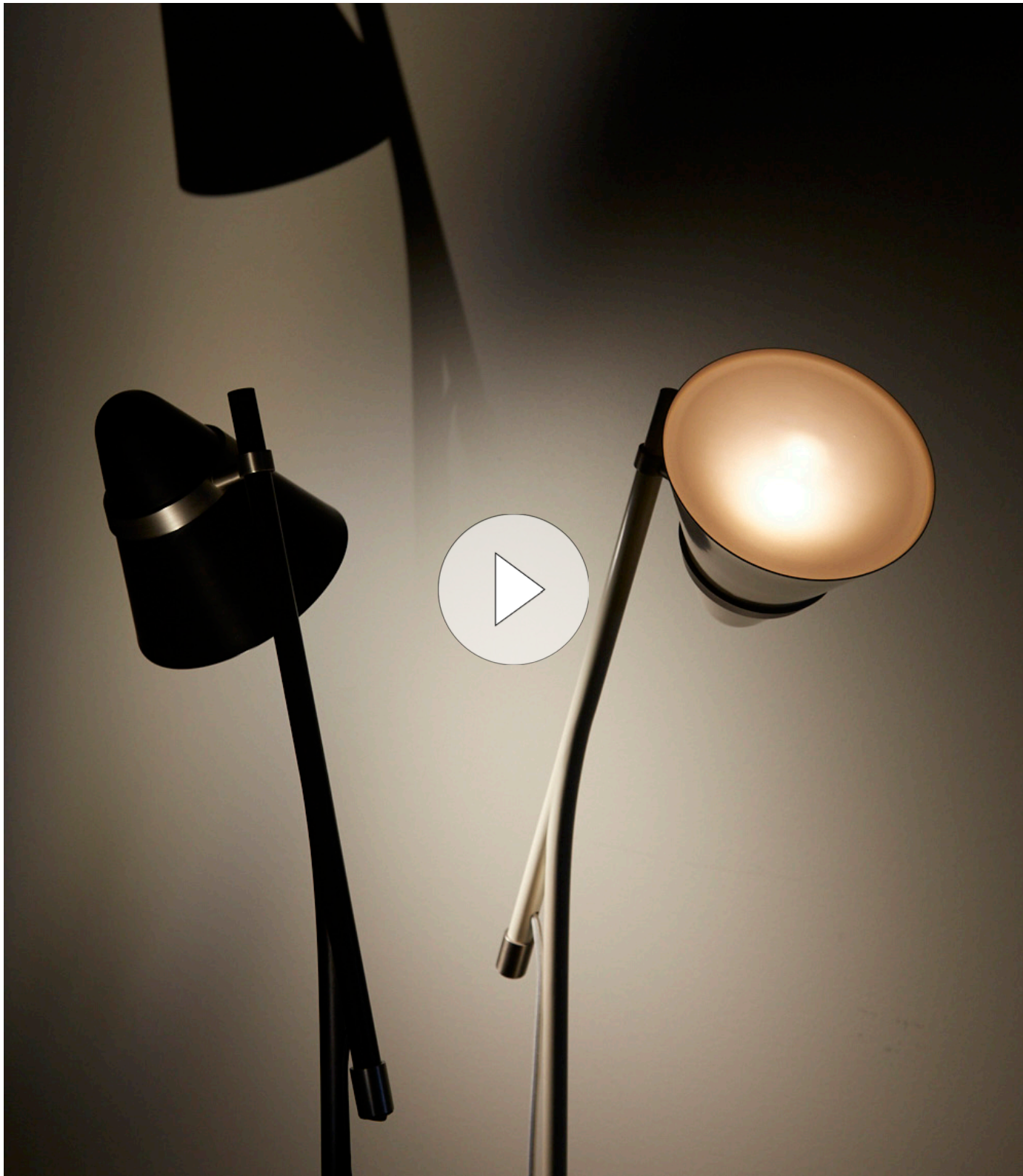


“I *used to* fit in that [interior designer] box, not anymore.

I create *experiences* that go so much beyond floors and walls. Architecture and landscape design, interior and industrial design are all *Design* - a dialogue, a journey curated with *light, volumes* and *materiality*.”

INTERIOR DESIGN











AMAL RESTAURANT

A ode to whimsical opulence, a Toronto restaurant, signed by Studio Munge, is an elegant escape brimming with custom details.

OWNING A 25-YEAR PARTNERSHIP BETWEEN ONE OF CANADA'S PHOTOFELERS, Charles Khabouth, interior designer Alessandro Munge, founder of award-winning Studio Munge, is Amal, a curious new Lebanese restaurant Toronto. Resplendent with layered alls and custom pieces, Amal is a it for the eyes, no matter where y land. The interior's white walls architectural milwork serve a neutral backdrop for bursts pastel blues, mint greens, and nt-orange tones reminiscent of

Munge says. "And, as they journey, a sense of marvel will take over in the discovery of handcrafted curiosities." Those unique decorative accents include one-of-a-kind furnishings, artisanal pendant lights, custom rugs, and an 850-square-foot ceiling mural, which was designed by Canadian art studio Moss & Lam and hand-painted on-site by a local artist. "We wanted to create a memorable and connective experience," Munge says. "In the age of fast fashion and disposable experiences, I always want our dining rooms



FROM TOP: The main dining area of Amal, designed by Studio Munge, features a 700-square-foot custom rug and a ceiling mural designed by Moss & Lam. Guests experience a sense of opulence from the moment they approach the front door. OPPOSITE: A semi-private dining area is framed with custom-designed featuring a mosaic star pattern.



EXPLORE IN VITA



amal toronto

Design firm: Studio Munge, Toronto

The details: A former French eatery in the fashionable Yorkville neighborhood has been reborn as Amal Toronto, trading its bistro style for the Bedouin. Studio Munge crafted the Lebanese concept as a bright and immersive "feast for the senses" with a design that is as expressive as its cuisine. "The venue had to be fresh and uplifting. It is a sensual, feminine space and represents modern Lebanon, breaking away from stereotypes while remaining true to its vibrant culture," says Alessandro Munge, founder and design director of the local firm. The restaurant's color palette of dusty blue, mint green, and sandy beige channels Lebanese markets, while a handpainted ceiling tapestry by art studio Moss & Lam covers the eatery in a vibrant mix of burnt orange and bright yellow. Original mosaic floors topped by handtufted rugs in muted hues and laser-cut screens that showcase a star pattern motif are artful nods that transport guests from Toronto to Beirut. In the softly lit semiprivate dining room, a collection of clay sculptures commissioned by GZ Art Co. ties in with the narrative, further creating a sense of place and craft. "The layering of colors, textures, and patterns brings warmth and authenticity—a sense of cultural relevance," Munge adds. "It must be grounded in the local context yet embrace its escapist nature."



Awards Highlight - Forbes Travel Guide



We've made it through the Winter!

We all know this is the hardest of all seasons.

You should be so proud of your resilience -
you kept your chin up, focused and pushed through
like the strongest of athletes.

Look at everything that we've accomplished!

No hibernation for this winning team!

Spring is here, Summer around the corner;

Let's remain positive, keep supporting
each other and reach our next milestone!



You're Awesome!

