



## QUEEN'S MARQUE

SCHEMATIC DESIGN PRESENTATION:  
L1 HOTEL LOBBY, TYP ELEVATOR CAB & LOBBY, & TYP CORRIDOR  
APRIL 18TH, 2019

STUDIO  
MUNGE

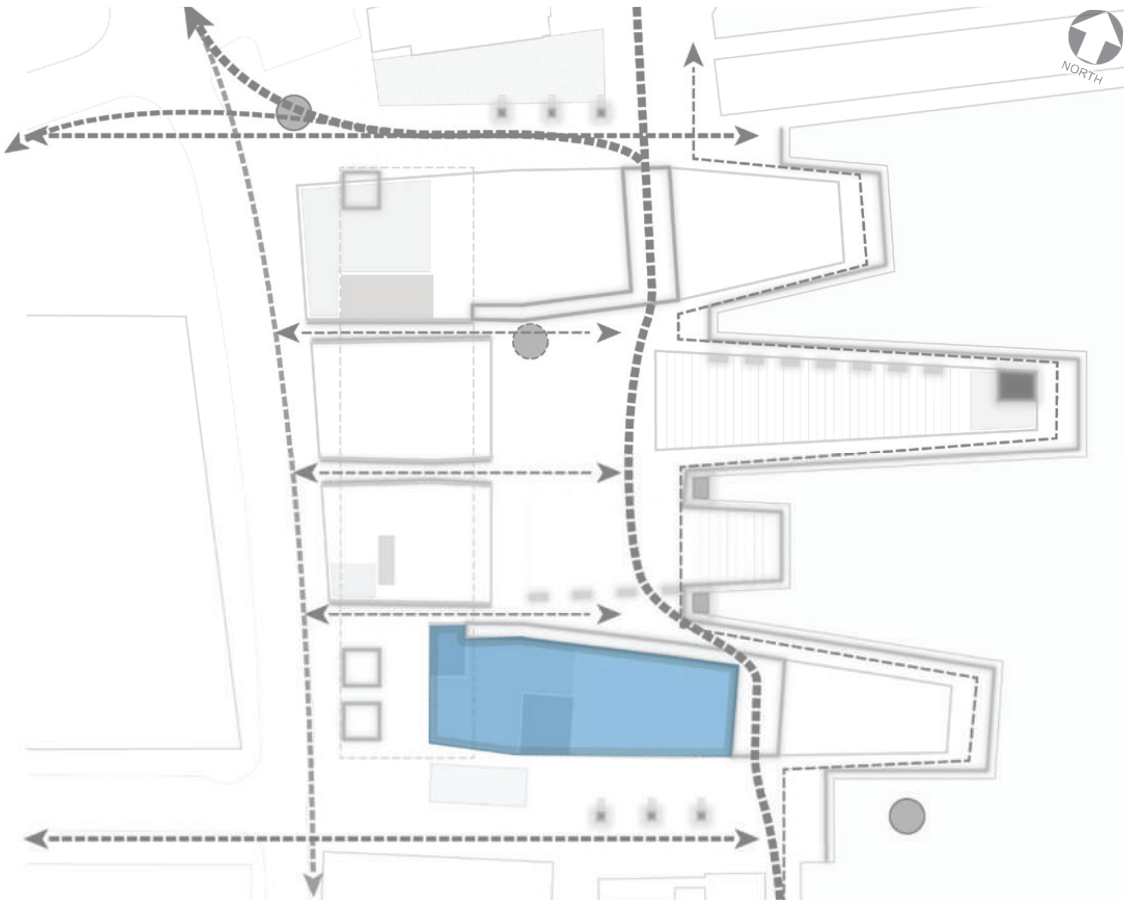
# BETWEEN THE HULLS

Rich in history, Queen’s Landing, the site of Queen’s Marque is significant to the culture and spirit of Halifax. This important land was claimed by the courageous privateers that carried with them the “Queen’s Marque”, her Majesty’s authority to claim and build on this land in her name. From humble beginnings, strong defensive military fortifications and innovative fisheries, the Queen’s Landing is a testament to the Haligonian resilience and perseverance.

Appropriately, Queen’s Marque’s architectural story symbolizes marine forms of grand vessels docking on the Waterfront, accurately representing Halifax’s shipbuilding past while defining the city’s future. Purposeful locations of the Rise Again, Queen’s Landing steps, plazas, beacons, and art encourage pedestrian traffic to flow through like water between vessels.

The buildings are designed thoughtfully with locally sourced and inspired materials. Nova Scotian Sandstone, distinctive in olive to tan colours, is complemented by the iconic salt & pepper provincial Granite. Muntz metal accent the building, honoring the important local historic buildings while representing a modern interpretation of ship hulls; further reinforcing the significance and influence of their marine culture.

Located in the south vessel, the Queen’s Marque Hotel interior design will pay respect to this notable location and poetic architecture.



Local Granite



Local Sandstone



Hand Rubbed Muntz Metal



Walnut Wood





# A HOME AWAY FROM HOME

*Located in the bustling downtown environment, within the exciting waterfront redevelopment, the Queen's Marque hotel will represent an evolution of something new.*

*We are inspired by the natural hues, tones, textures, and landscape of this city and surroundings. "What is the Queen's Marque Hotel guest seeking when travelling to Halifax?" We believe the guest is a well-appointed traveler that will be inspired to explore the Queen's Marque plazas, city sites and lifestyle, but will ultimately return to their "home away from home" with a soothing residential sense of a familiar place.*

*Suited to this guest, the hotel interiors will be subtly feminine in refined details yet complimented by the use of masculine materials. Accents of reimagined Nova Scotian art and craftsmanship are introduced to create a tailored and unique environment. Staterooms and suites are internally programmed to maximize the Atlantic ocean harbourfront views.*

*With a respect for tradition, the hotel interior design will reflect a sense of place while supporting a progressive design direction in Halifax. By designing unique touch points throughout the hotel with these design principles, visitors will be immersed in an experience truly Nova Scotian.*

"ALL JOURNEYS HAVE A SECRET  
DESTINATION OF WHICH THE TRAVELER IS UNAWARE."

-THOMAS MERTON

The Travelling Professional



City Centre



Halifax Harbour



LOCAL CONTEXT LOCAL CRAFT & ARTISANS

Therese Bombardier Pottery



Laurie Swim - Quilt Artist



Hooked Rugs



MacAusland Woolen Mills - Throws

TRADITIONAL  
TECHNIQUES,  
REIMAGINED AND  
MODERNIZED



Canadian Shaker Furniture



Kimberley Eddy - Sea Glass Art



LOCAL CONTEXT HALIFAX HISTORY

*Downtown Halifax is a hub of historical monuments and sites, making it a go-to tourism destination. We learn from this historic presence as it defines the past but also describes a strong desire to persevere and the ability to adapt for the future.*



Maritime Museum



Citadel Hill



CSS Acadia



Boer War Manument, Province House

OLD VALUES,  
CONTEMPORARY  
IDEAS



78th Highlanders Pipe Band



LOCAL CONTEXT CHARACTER & ATMOSPHERE

PALPABLE SENSE OF PLACE







PURPOSEFUL

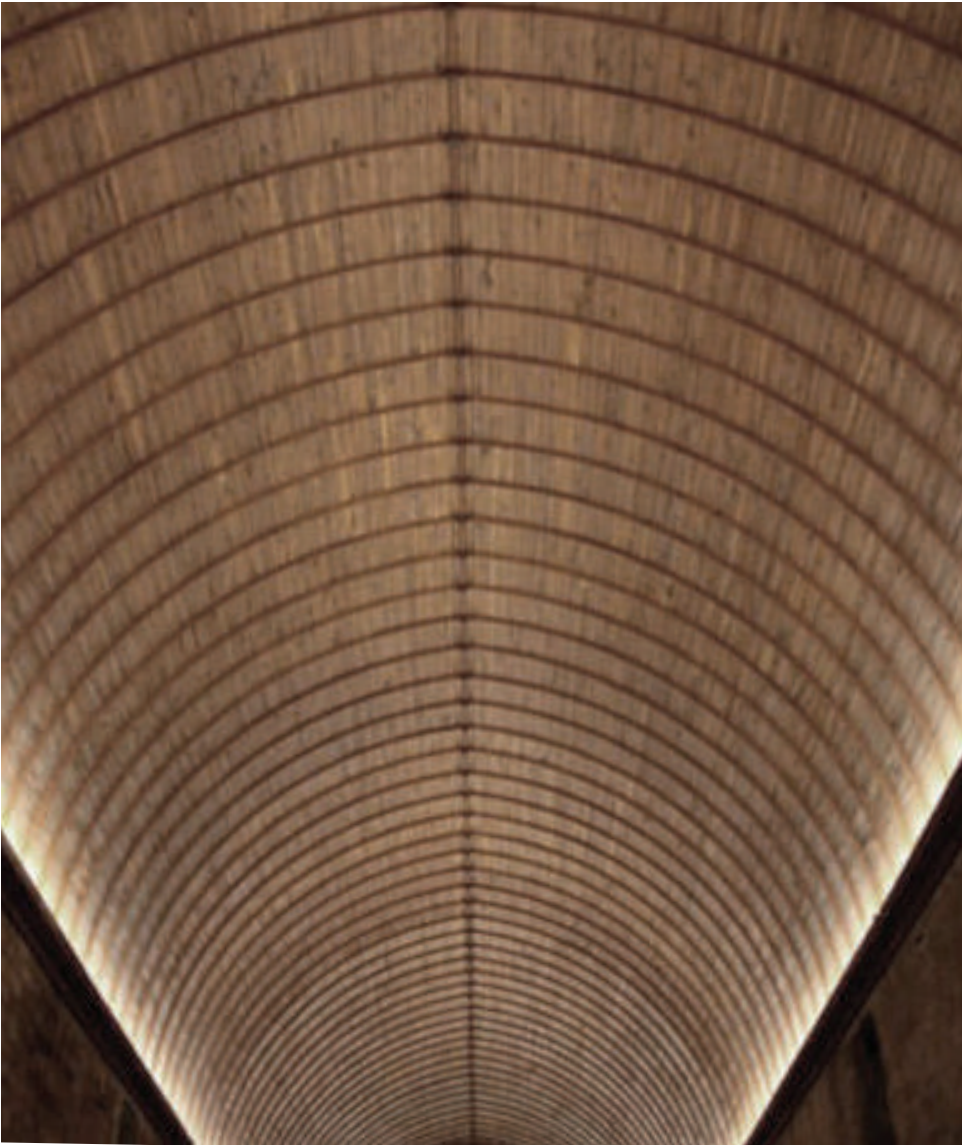


RELAXED & CASUAL





MARINE



DIMENSIONAL



DETAILED





Downtown Halifax



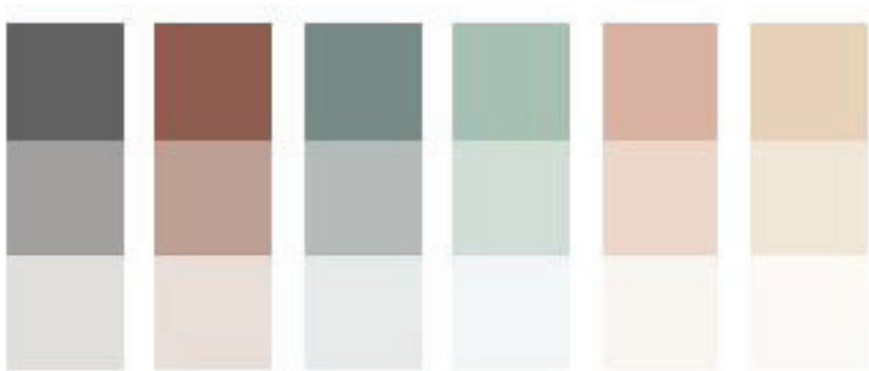
Peggy's Cove



Citadel Hill



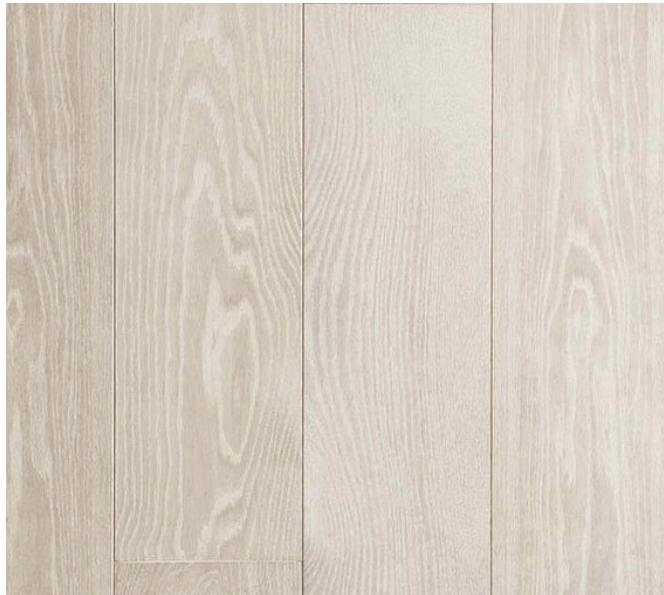
Peggy's Cove





THE JOURNEY 01 INTERIOR PALETTE

WHITE OAK



SANDSTONE



GRANITE



CLASSIC TIMELESS TEXTURES



MODERN NEW SCOTLAND TARTANS



MUTED METALS



LOCAL ART REINTERPRETED  
*Nova Scotia - Walter Farndon*



WOOD LINED





A WARM WELCOME



RESIDENTIAL SEATING



MODERN INTERPRETATION OF HOOKED RUGS

LOCAL ART  
*John Macnab*



SANDSTONE SOFFIT



FURNITURE JOINERY



ENVELOPING EXPERIENCE

UPHOLSTERED DETAILS



BESPOKE GUEST TOUCHPOINTS



"GOOD DESIGN IS MAKING SOME-  
THING INTELLIGIBLE AND MEMORABLE.  
GREAT DESIGN IS MAKING SOMETHING  
MEMORABLE AND MEANINGFUL."

-DIETER RAMS

WORKING METAL FORMS

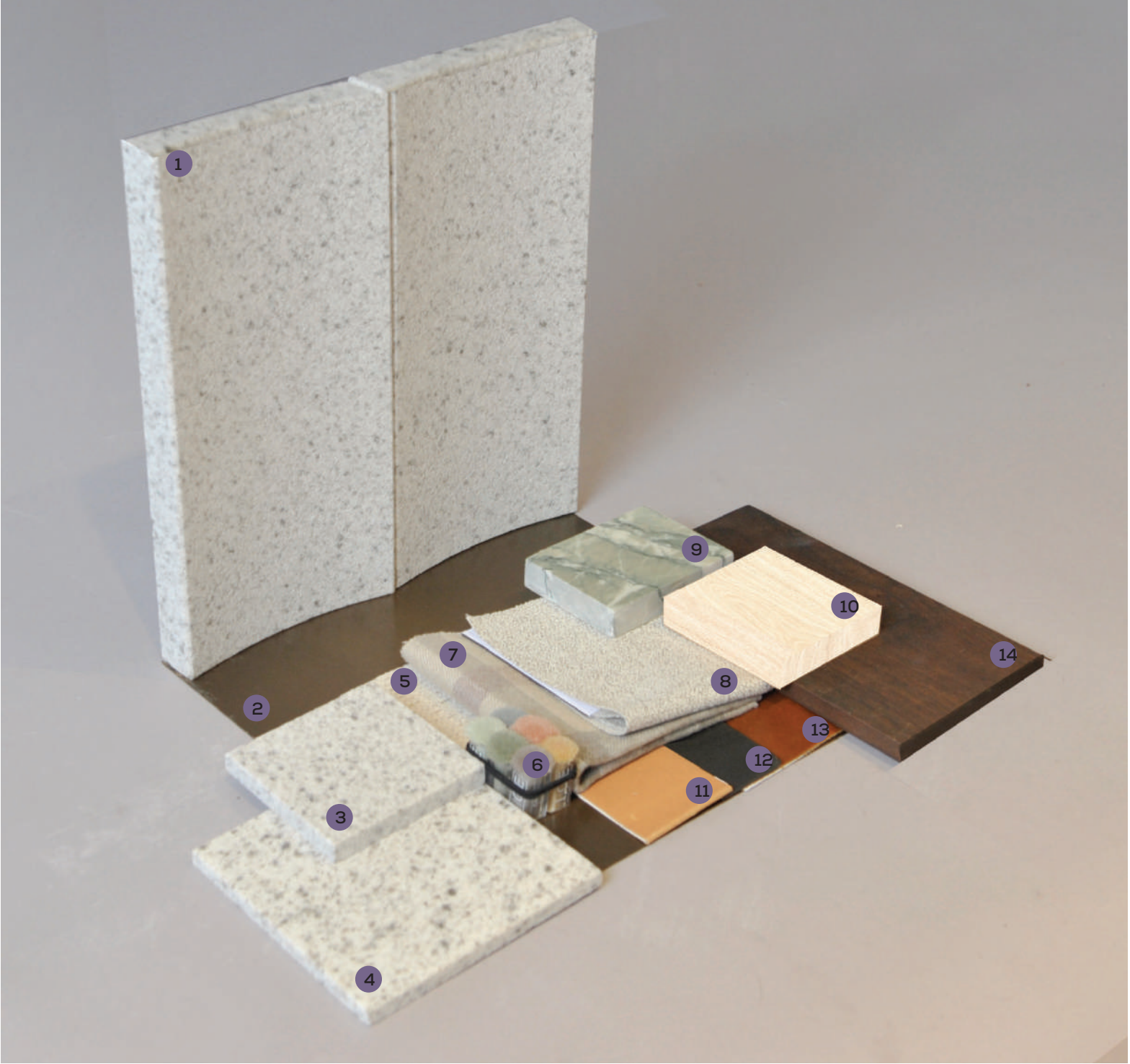


- 1 Typical Muntz Metal
- 2 Typical Honed Granite on Floor
- 3 Typical Sandblasted Granite on Floor
- 4 Velvet Fabric for Upholstered Bench Seating
- 5 Reception Carpet Poms
- 6 Typical White Oak Wood on Wall
- 7 Wood for Reception Desk Legs
- 8 Stone for Reception Desk Top



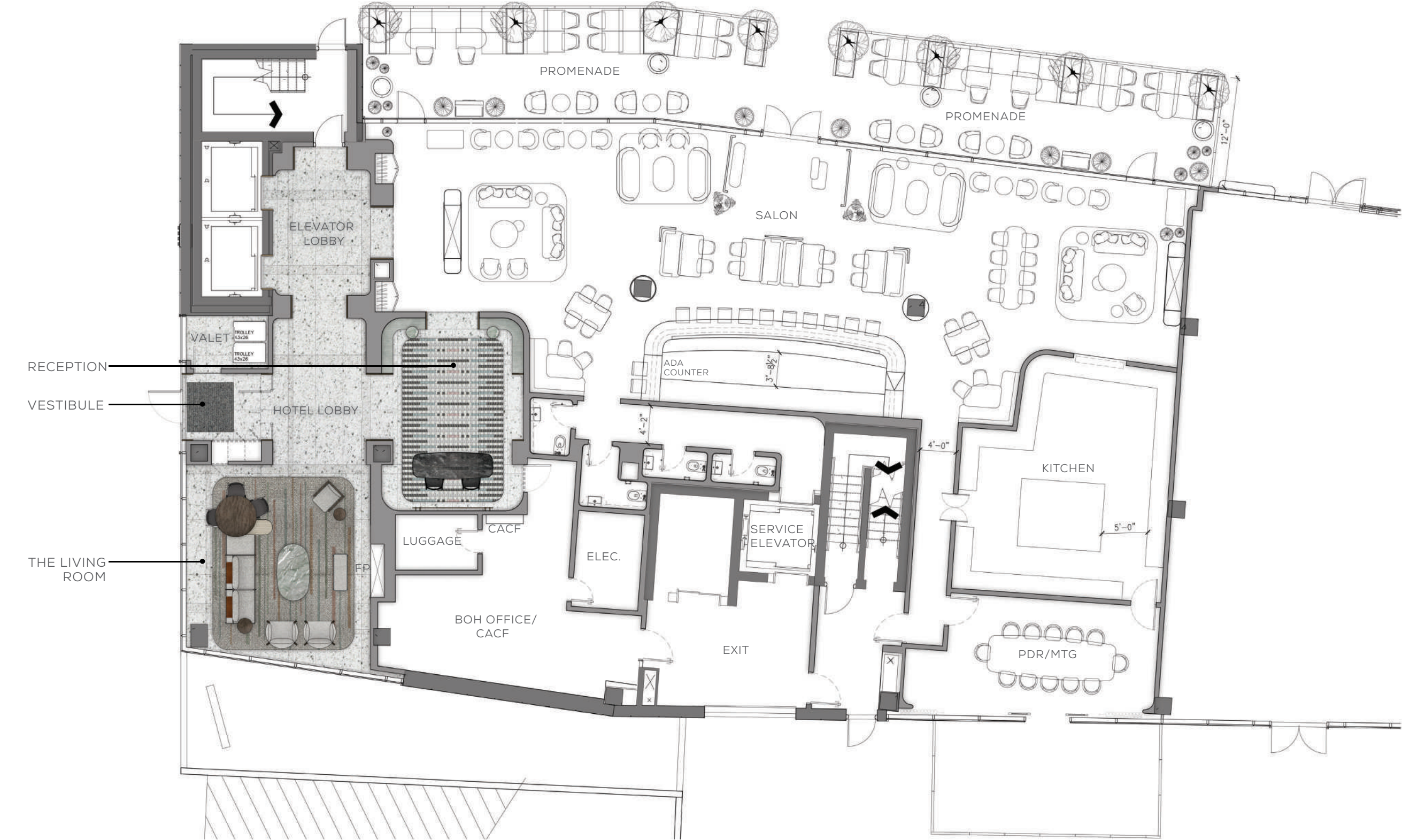


- 1 Fluted Granite on Wall
- 2 Typical Muntz Metal
- 3 Typical Sandblasted Granite on Floor
- 4 Typical Honed Granite on Floor
- 5 Side Chair Fabric
- 6 Area Rug Carpet Poms
- 7 Throw Fabric at Ottoman
- 8 Sofa Fabric
- 9 Coffee Table Stone
- 10 White Oak at Club Chair/Concierge Desk Side Table
- 11 Leather at Club Chair
- 12 Typical FF&E Blackened Metal
- 13 Leather Detail at Sofa
- 14 FF&E Walnut wood at Side table and Coffee Table Base



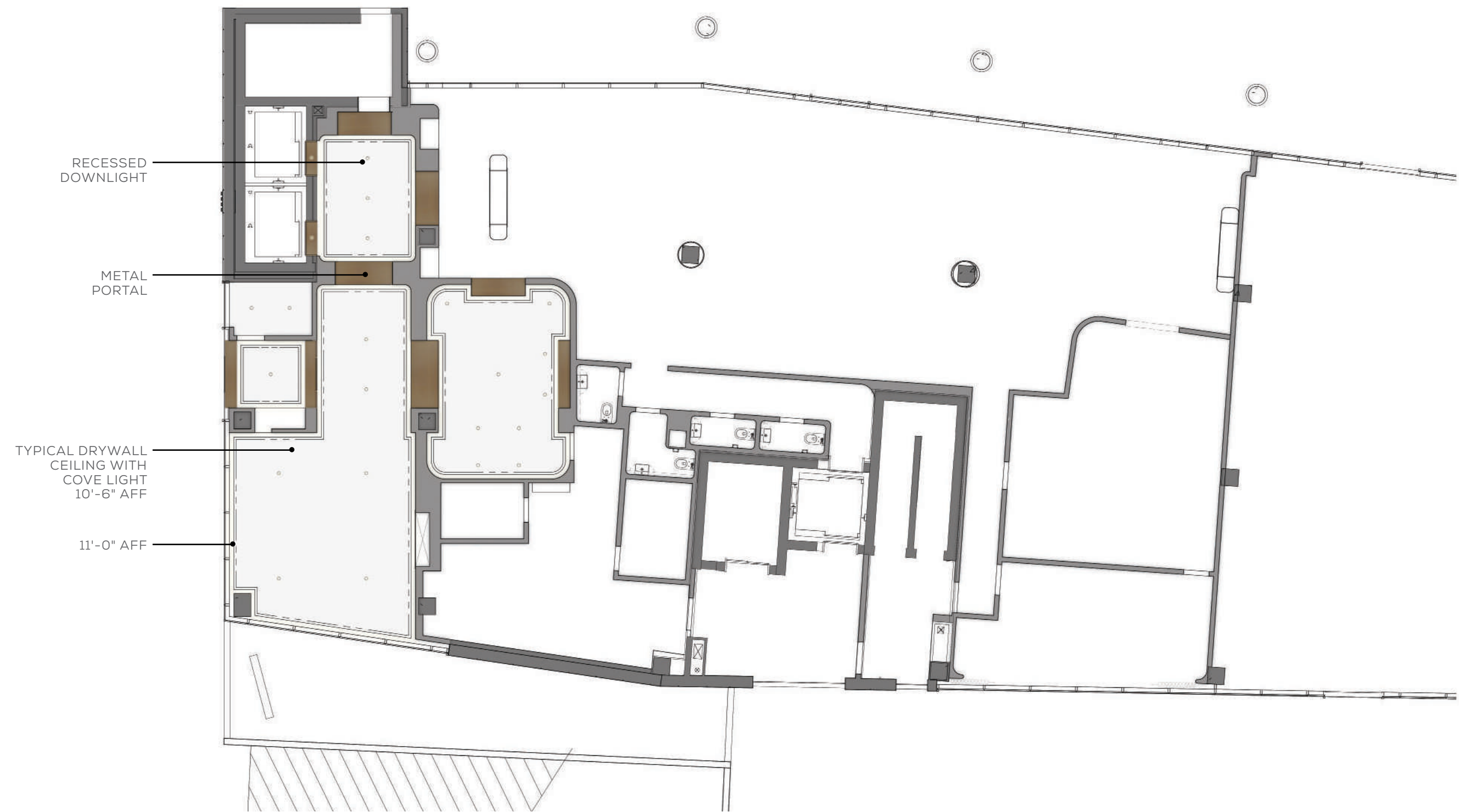


AMENITY PLANS LEVEL 01 GROUND FLOOR PLAN



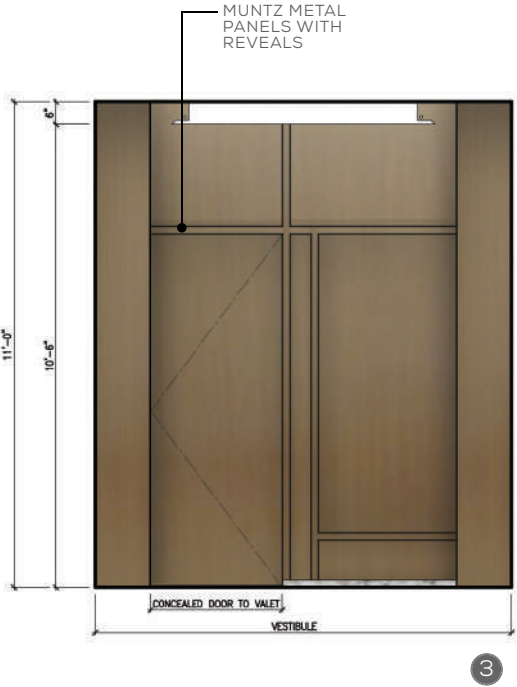
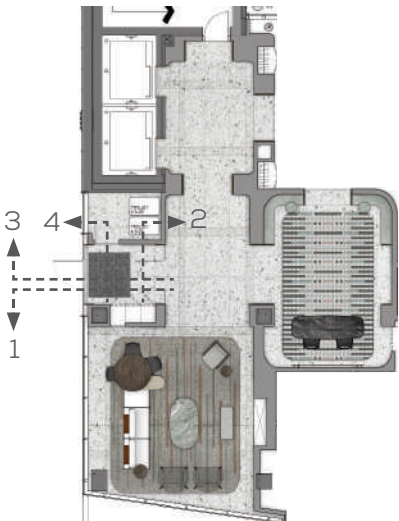


AMENITY PLANS LEVEL 01 REFLECTED CEILING PLAN



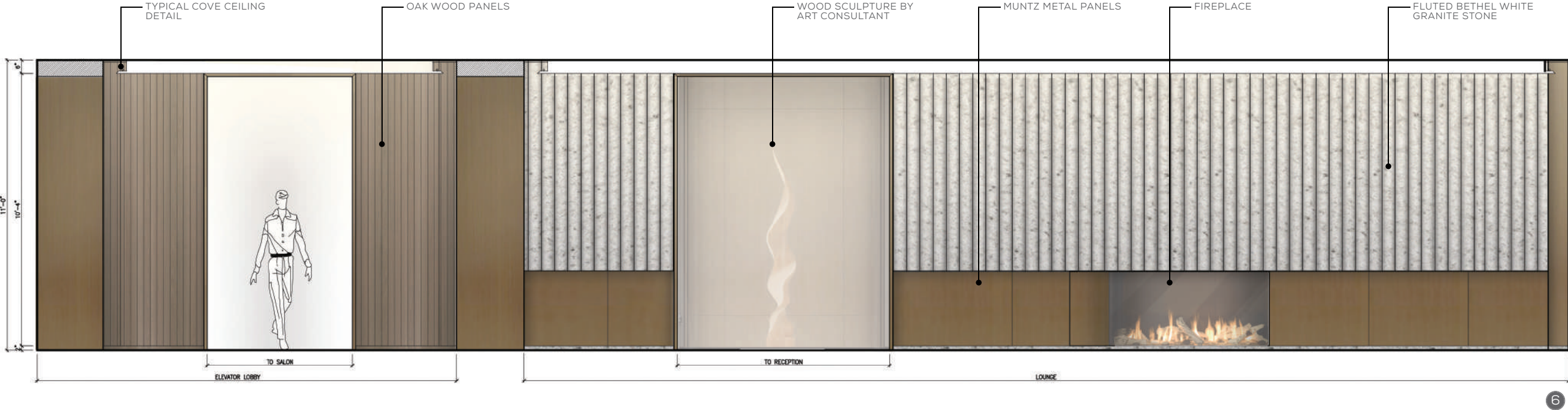
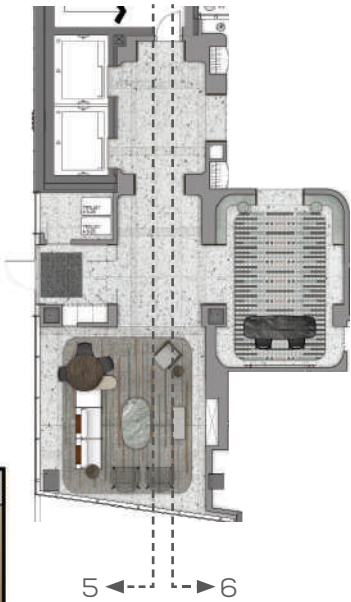


AMENITY PLANS LEVEL 01 LOBBY VESTIBULE ELEVATIONS



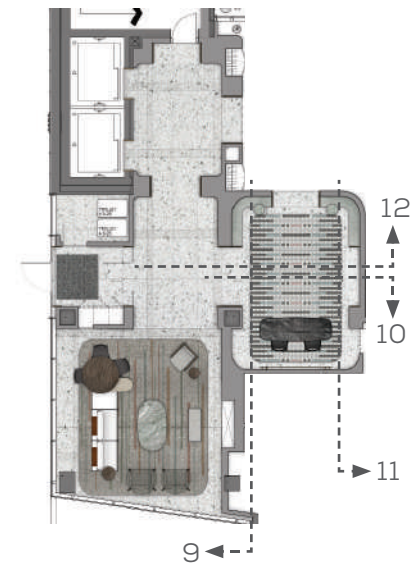
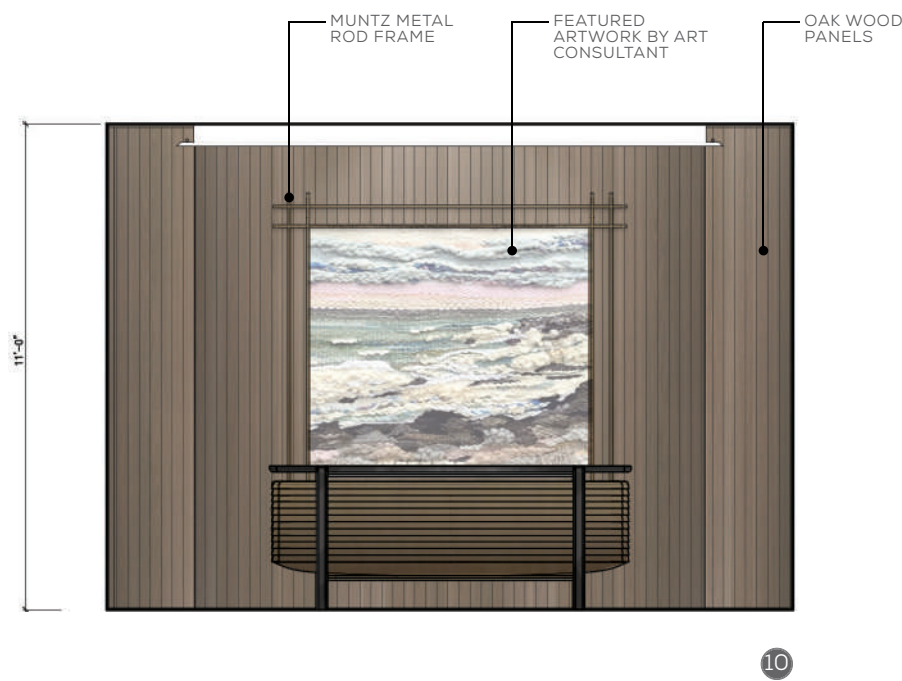


AMENITY PLANS LEVEL 01 LOBBY ELEVATIONS





AMENITY PLANS LEVEL 01 LOBBY RECEPTION ELEVATIONS





GROUND FLOOR LOBBY - THE LIVING ROOM FF&E



1 ERCOL MARINO CHAIR - PURCHASED



2 CUSTOM SIDE TABLE



3 LANDAU LAMP - PURCHASED



4 CUSTOM OTTOMAN TO MATCH SOFA



5 CUSTOM COFFEE TABLE



6 YAK DEPA DOVA CHAIR - PURCHASED



7 CUSTOM RUG



8 CUSTOM SOFA WITH INTERGRATED CONCIERGE DESK



9 RIVULET DIVANI CHAIR - PURCHASED



10 SOKOLOVA LEAVES FLOOR LAMP - PURCHASED



GROUND FLOOR LOBBY - THE LIVING ROOM CUSTOM PIECES



CUSTOM OTTOMAN

CUSTOM SIDETABLE



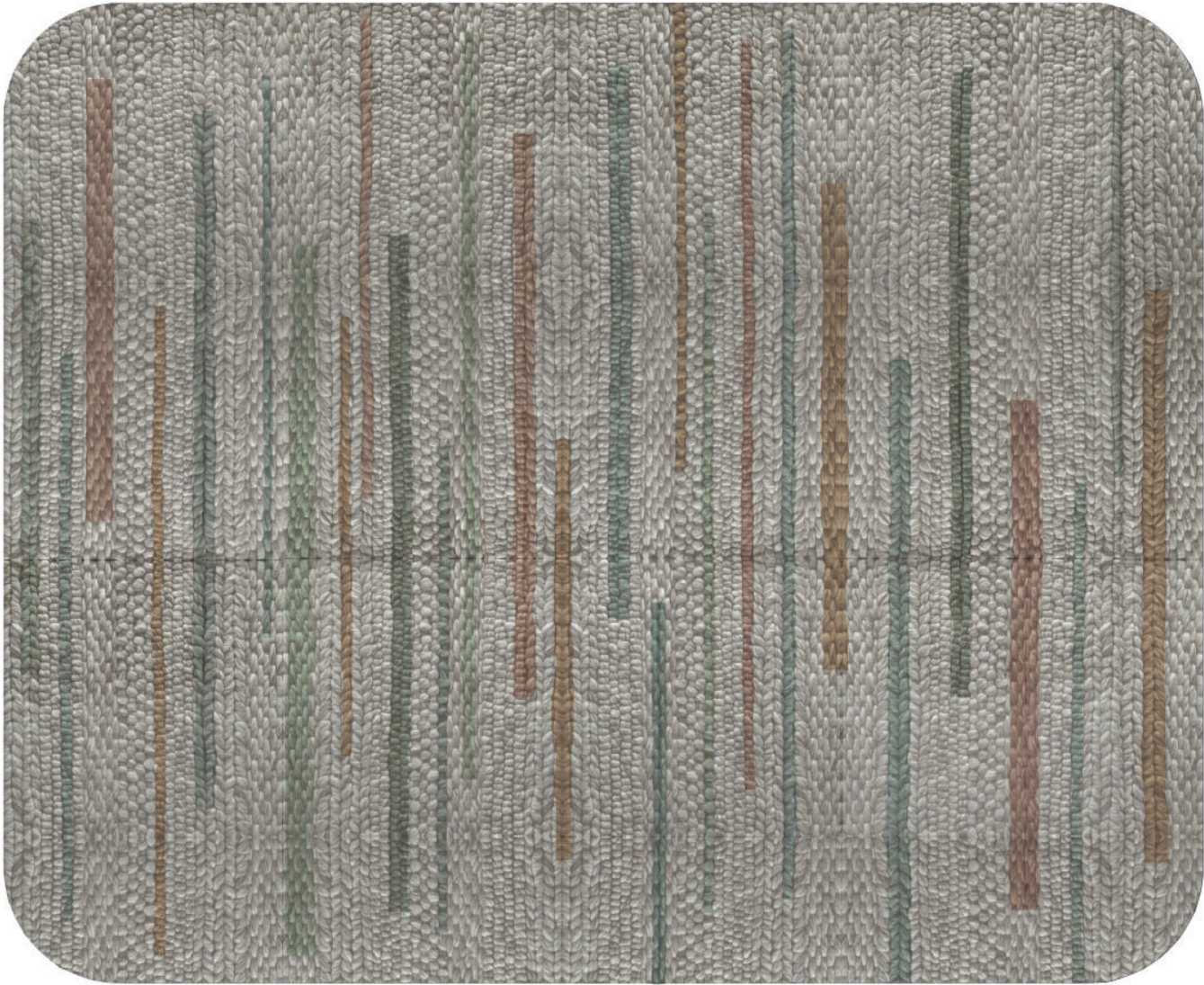
CUSTOM SOFA WITH INTERGRATED CONCIERGE DESK



CUSTOM COFFEE TABLE





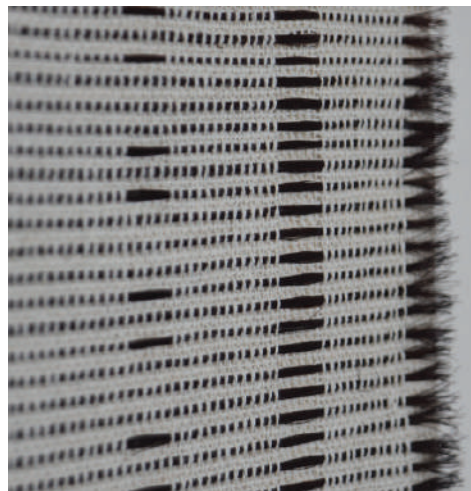
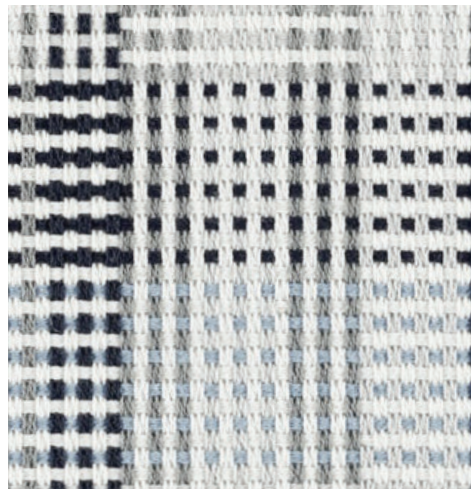


GRAPHIC

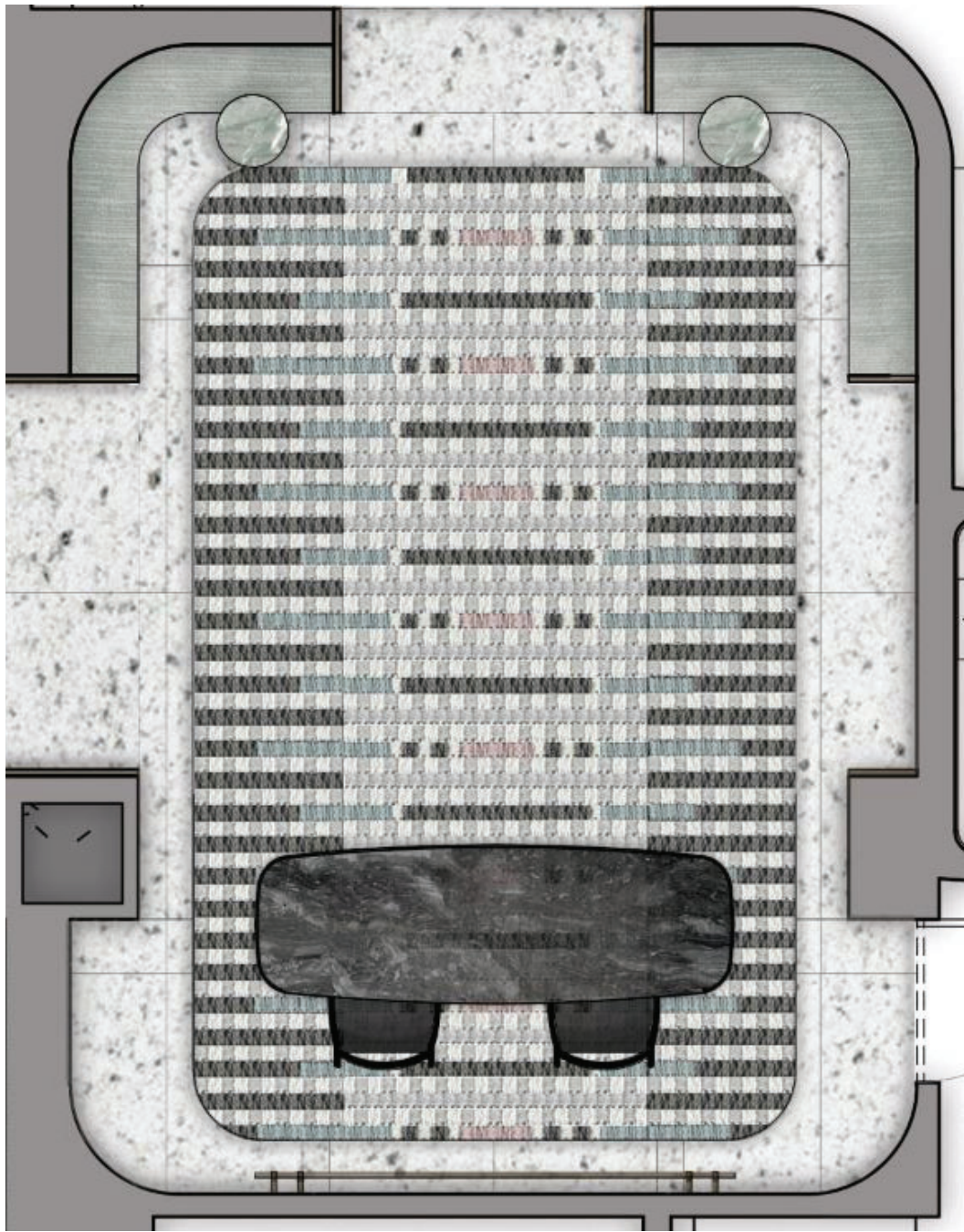
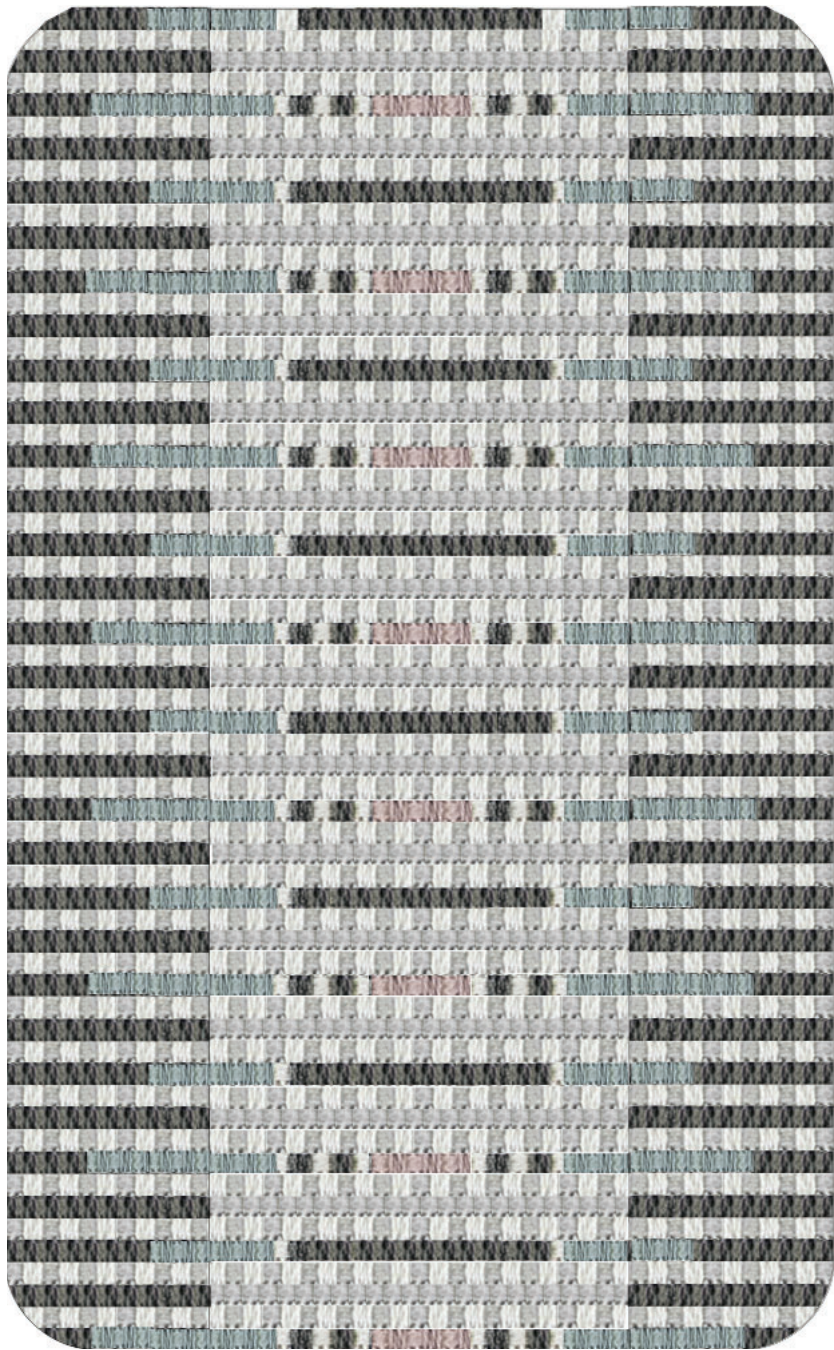
Weaving techniques reimagined and modernized. A 100% wool rug implementing natural fibres providing warmth and character. Inspired by Nova Scotian's natural textures and muted colours with a local craft influence, bringing a sense of residential atmosphere to the living room.







GRAPHIC  
Inspired by the notion of a  
modern plaid intergrated  
with weaving techniques in  
complementary muted tones.  
The carpet will provide an instant  
nostalgia of Nova Scotian craft.































































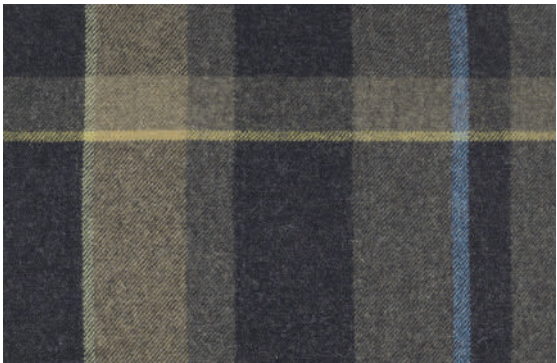
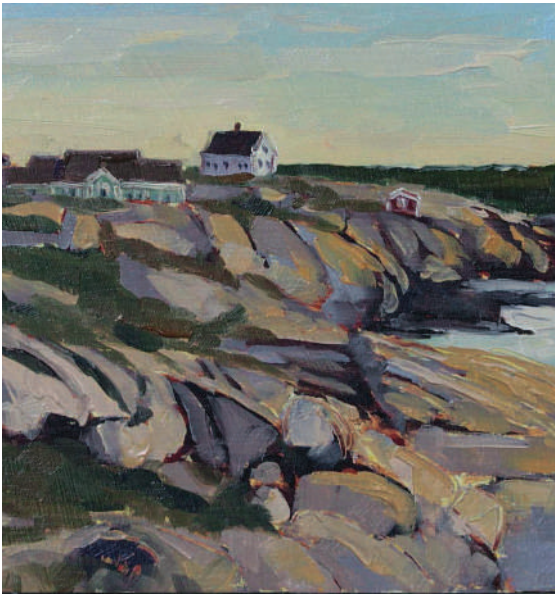






LOCAL ART REINTERPRETED

*Rocky Shore* - Evenia Makogon



REIMAGINED TARTAN  
CENTRE CARPET



SUBTLE TEXTURES

IMAGINATIVE  
AND INSPIRING,  
THE GUEST LIFTS  
AND CORRIDORS  
LINK SOCIAL AND  
PRIVATE ZONES WITH  
RESIDENTIAL STYLE



FEATURE DOOR HARDWARE



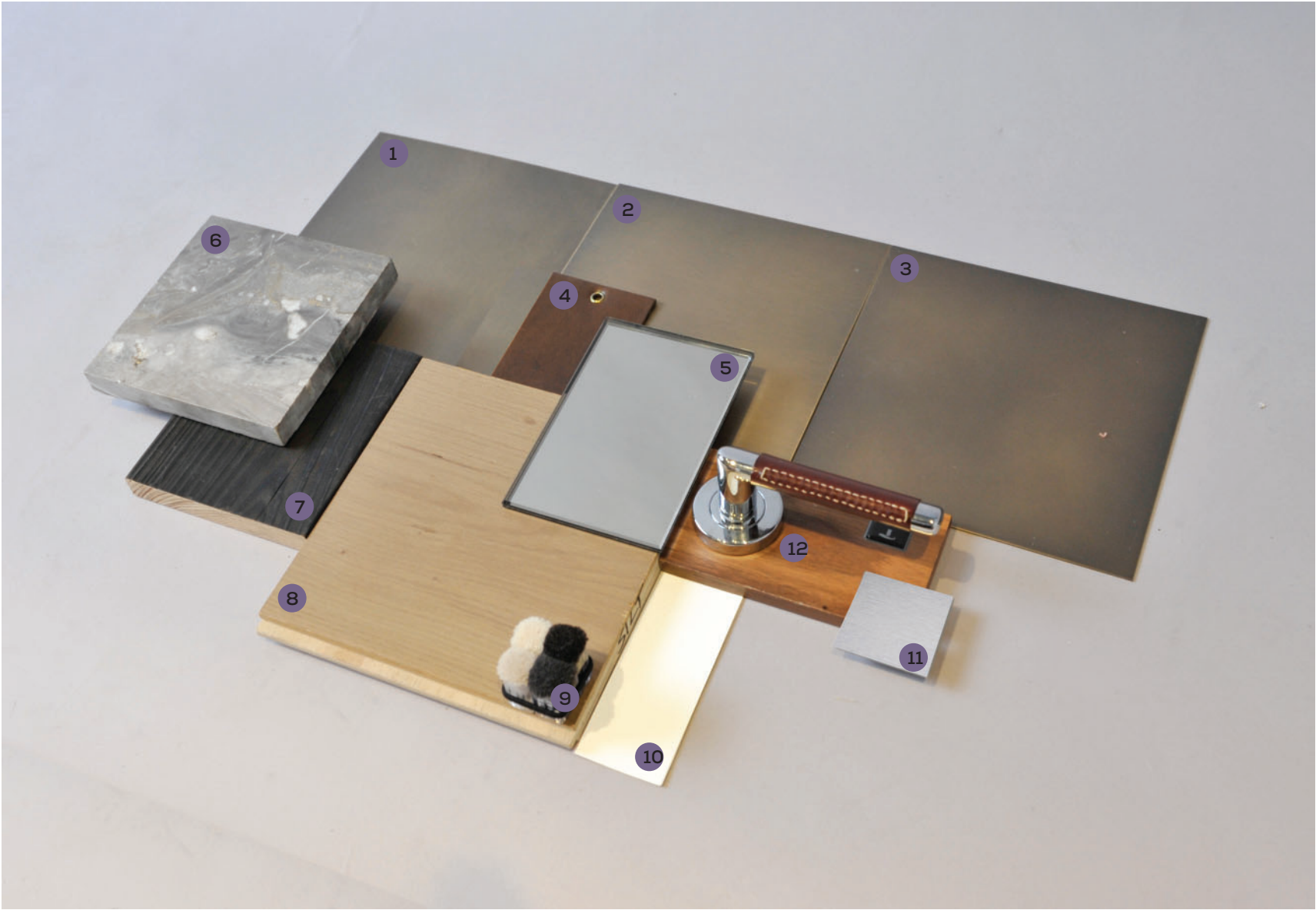
SOFT MUTED LIGHTING





ELEVATOR CAB/LOBBY & CORRIDOR TYPICAL PALETTE

- 1 Hairline Vertical Brushed Muntz Metal
- 2 Hairline Horizontal Brushed Muntz Metal
- 3 Typical Muntz Metal
- 4 Leather Wrapped Elevator Cab Handrail
- 5 Typical Bronze Mirror
- 6 Console Table Stone Top
- 7 Console Table Wood Legs
- 8 Typical White Oak Wood
- 9 Corridor Carpet Poms
- 10 Typical Paint
- 11 Typical Signage - Stainless Steel
- 12 Guestrooms Door Handle





ELEVATOR LOBBY & CORRIDOR MATRIX VIEWS



LEVEL 2



LEVEL 3



LEVEL 4

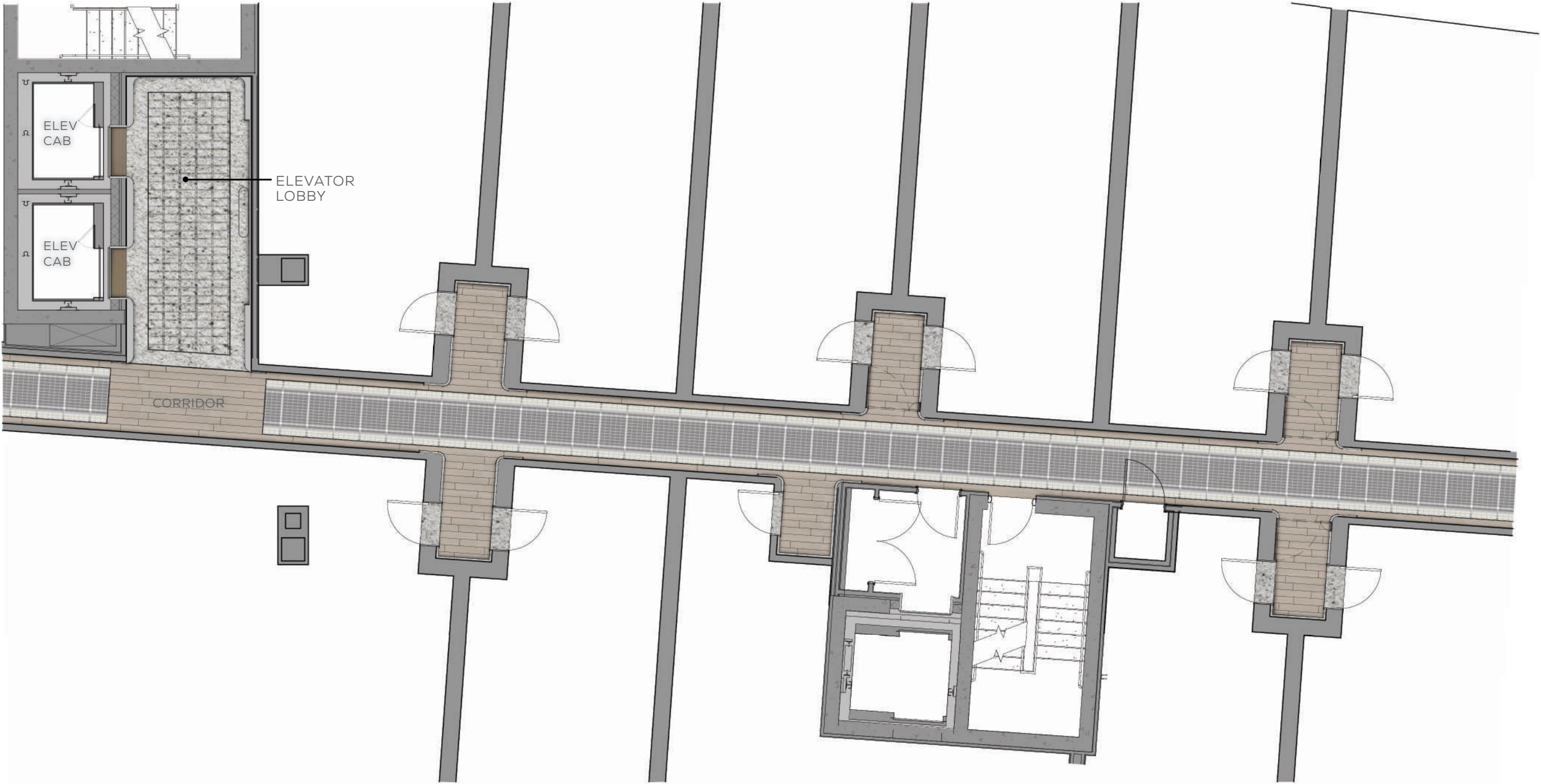


LEVEL 5



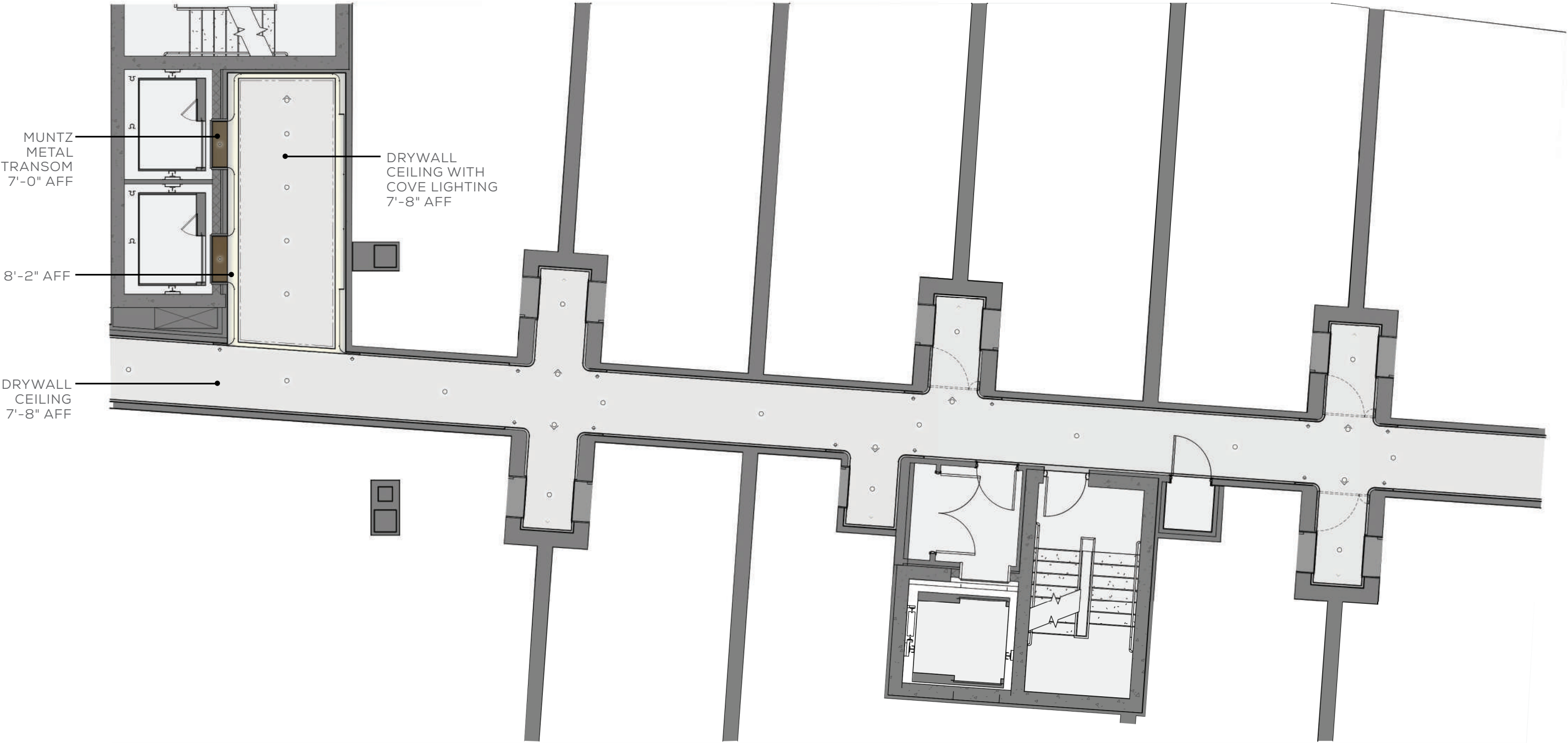


ELEVATOR LOBBY & CORRIDOR TYPICAL PLAN



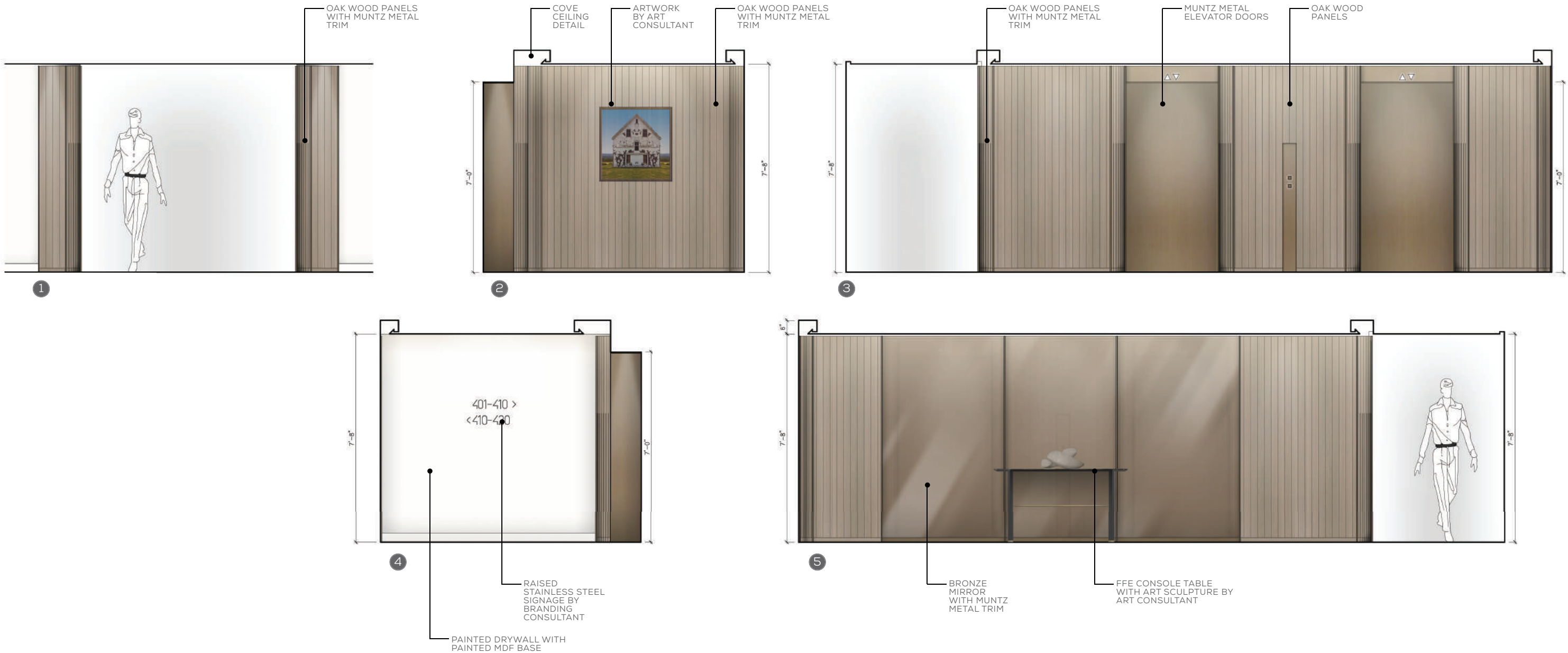
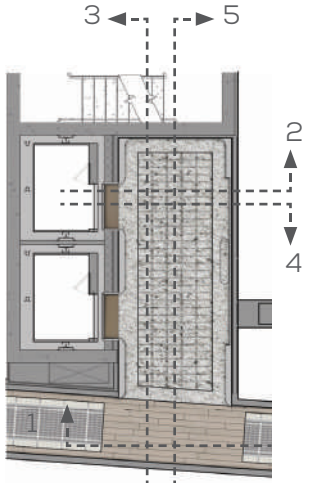


ELEVATOR LOBBY & CORRIDOR TYPICAL REFLECTED CEILING PLAN



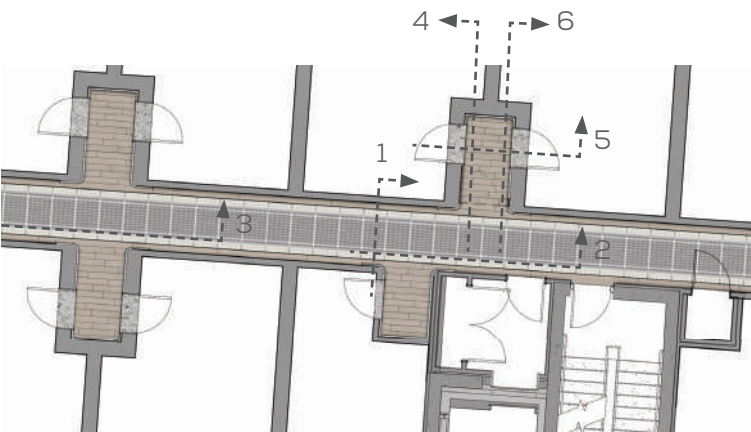


ELEVATOR LOBBY TYPICAL ELEVATIONS

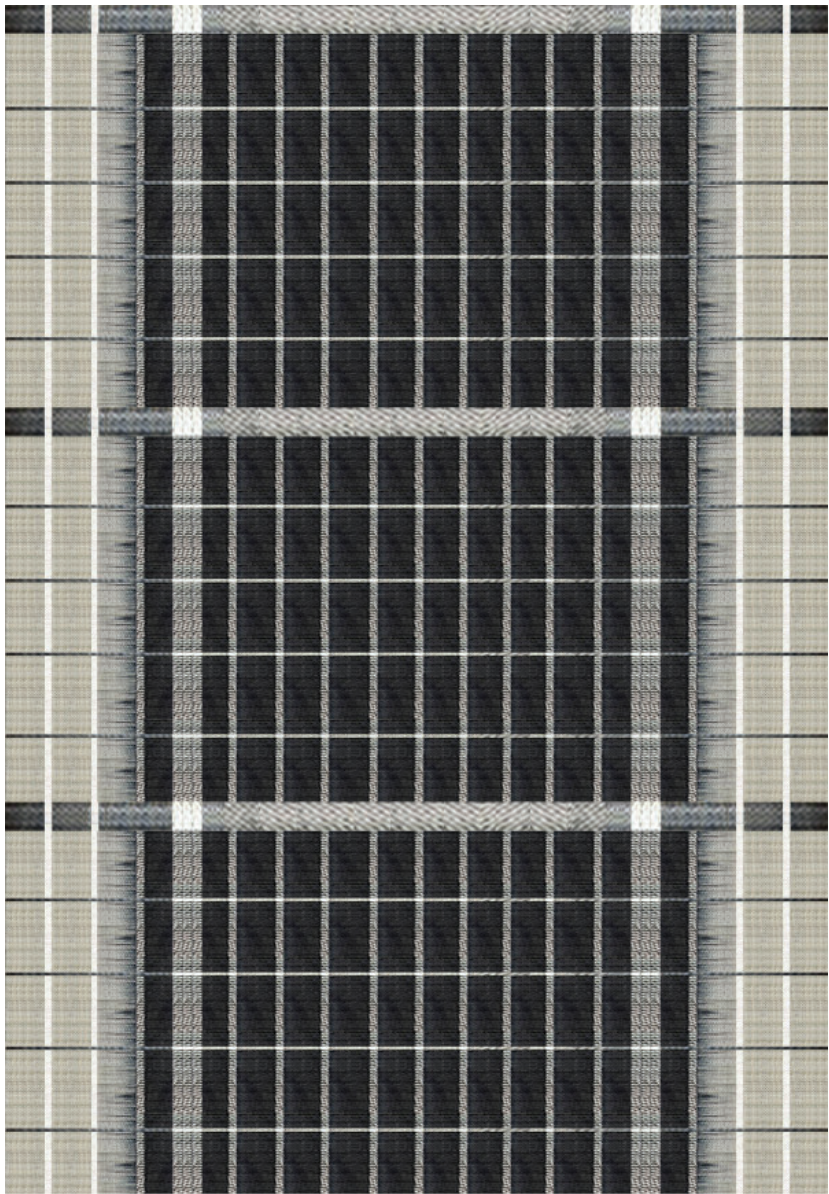




CORRIDOR & SUITE ENTRANCE TYPICAL ELEVATIONS







GRAPHIC  
Modern interpretation of the  
traditional plaid pattern.



CUSTOM CONSOLE TABLE IN ELEVATOR LOBBY





























ELEVATOR CAB FLOOR FINISH PLAN, RCP & ELEVATIONS







TOP VIEW



PERSPECTIVE VIEW





THANK YOU















