

09
2023

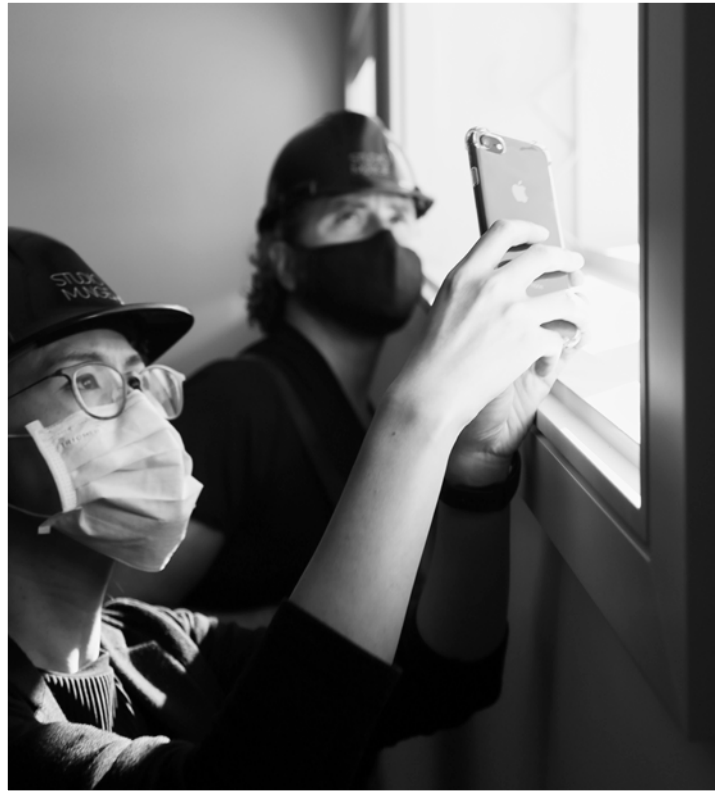
FORUM

STUDIO
MUNGE

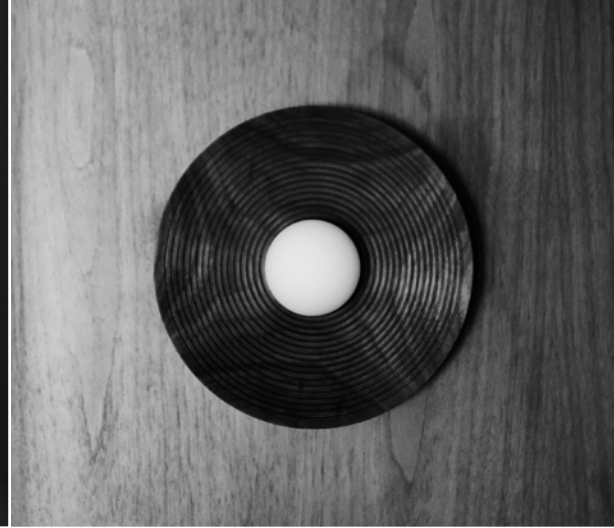
Content

3	Introduction
4	Brooke Coles
5	Frank Lin
6	Vera Lam
7	Zoya Yahya
8	What’s New with Nadia
9	Khayeri Floorings
10	Rune NYC
11	Libri Products
12	Amal Toronto
20	Pendry Chicago
23	138 Yorkville
25	Renderings - Resource
26	Renderings - In-house
31	Renderings - Pixel Art
35	Renderings - Caramel
38	Renderings - Binyan
39	Renderings - JORG

Introduction




Clockwise: close up inspection at the Park Hyatt Toronto; presidential suite light vignette; ballroom corridor.
Next page: Finn floor lamp prototype review



“Our future is incredibly bright. There are unbelievable opportunities coming our way! Until this storm passes, keep inspiring each other, stay connected, stay safe.”





“Properly designed spaces have the extraordinary ability to enhance our emotional wellbeing. It’s this specific quality I chase in all of our projects.”

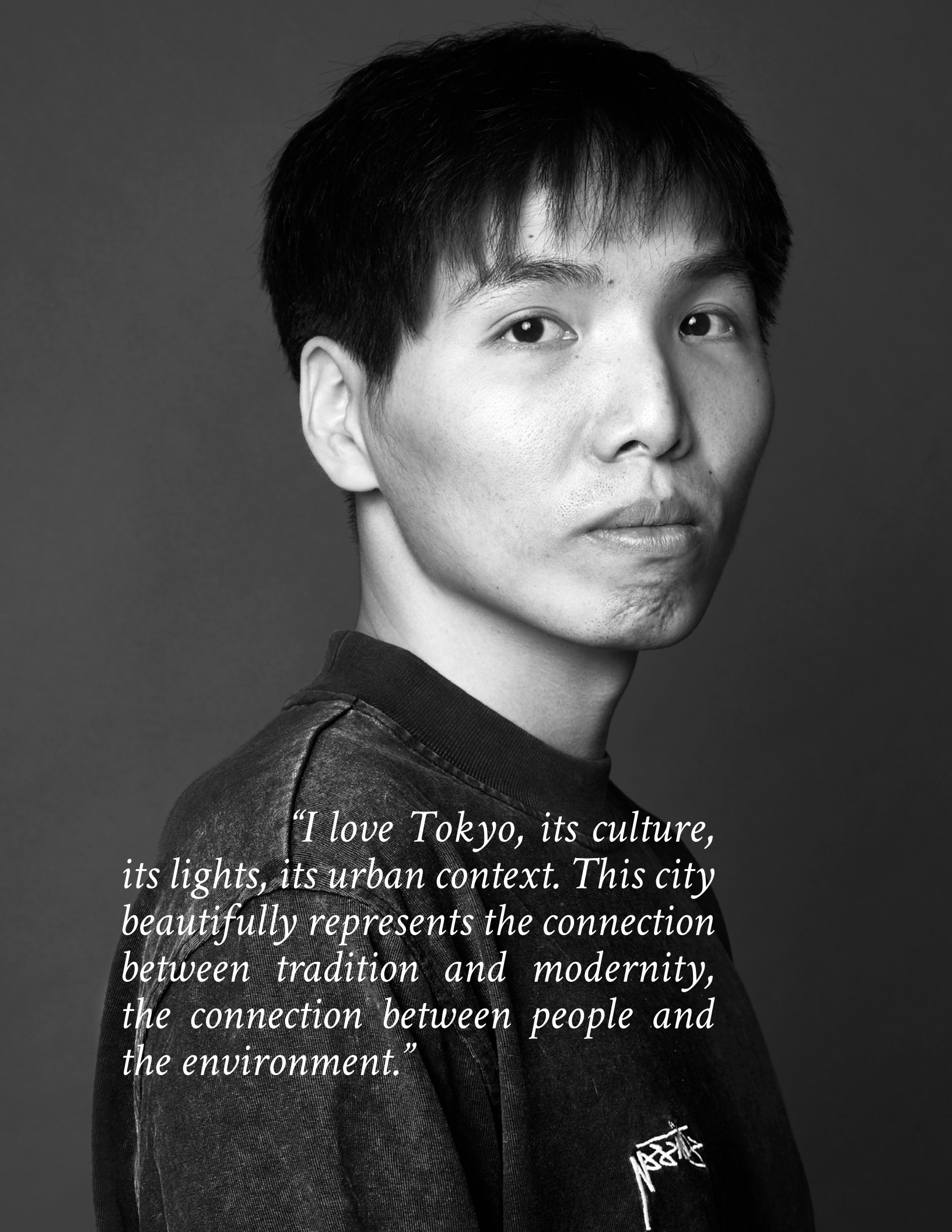
A seasoned explorer who lived in Japan, Mexico, and India before settling in Toronto, Brooke brings over ten years of hospitality and residential design experience. She is passionate about gastronomy, fashion, and art. A Frida Kahlo’s aficionado, Brooke is most inspired by her dynamist and incredible resilience in adversity.

Brooke embodies design excellence and is the recipient of an ARIDO award for her work at the Stratus Bar & Restaurant in Toronto. An exceptional designer and project lead, she believes design can genuinely enhance emotional wellbeing. Her expertise and savoir-faire are palpable in all her projects, including The Pendry Hotel in Chicago and

Nobu Toronto by Michelin-starred chef Nobu Matsuhisa.

“Properly designed spaces have the extraordinary ability to enhance our emotional wellbeing. It’s this specific quality I chase in all of our projects.”

Beyond an exceptional designer, Brooke is an outgoing and encouraging mentor who focuses on building bridges and creating deep connections with her peers. Her adaptability and cultural curiosity have enabled Brooke to seamlessly develop authentic design solutions embodying Studio Munge’s highest design standards while always meeting our clients’ operational needs.



"I love Tokyo, its culture, its lights, its urban context. This city beautifully represents the connection between tradition and modernity, the connection between people and the environment."

A citizen of the world, Frank was born in China and travelled the globe before moving to Toronto. His multiculturalism, his technical expertise, and his passion for materiality manifest in all his projects. Those qualities are distinct in his most recent private residences on Rosemary Lane and Indian Road.

Frank believes excellent design to be an in-depth study of the interconnection between the environment and the user, supported by structure and form. A quiet force, he takes great pride in figuring out intricate technical details with artistry and practical expertise. His rendering skills are superb and are only matched by his positive attitude and willingness to learn.

"I love Tokyo, its culture, its lights, its urban context. This city beautifully represents the connection between tradition and modernity, the connection between people and the environment."

Fascinated by light and illumination, Frank deeply connects with environmental photography and graphic arts. He is especially inspired by Japanese artist Yoshitomo Nara best known for his humorous paintings of a sarcastic youth.



“Human nature inspires me. I pay attention to everything and everyone around me. It helps me better understand the connection between people and space.”

Vera Lam

Passionate about behavioural psychology and animal welfare, Vera is an explorer of the mind and land. This unique quality manifests in a variety of ways throughout the design process but especially in the concept phase where she shines in the development of unconventional solutions - breaking away from clichés and preconceived notions.

A global spirit connected to the environment, Vera was born and raised in Hong Kong between Mountain and Sea before moving to Calgary and finally Toronto where she joined Studio Munge bringing forth expertise in residential design and worldly perspectives.

at coffee shops. I get my caffeine fix and observe; I pay attention to everything and everyone around me. It helps me better understand the connection between people and space.”

Beyond a remarkable designer, Vera is a spirited team member always willing to assist and connect. Her curiosity and balanced approach to life have enabled her to flawlessly develop user-focused interiors representing Studio Munge’s highest design standards.

“Human nature inspires me, and so, I love to sit



Zoya Yahya

“Staying relevant is the most challenging yet stimulating aspect of the work. Every day I learn something new that makes me a better designer. That is my pursuit of happiness.”

Outgoing and radiating positivity, Zoya is a multifaceted designer holding a double major in architecture and interior design. Multi-award-winning at a young age, she is anything but pretentious - always helpful and ready to mentor her peers.

An independent mind who grew up hearty in the quaint village of Boroda in northern India, Zoya was destined to a life of creative expression surrounded by a family of architects. Her name even translates to Life, Light, and Inspiration. It is no wonder she illuminates the room wherever she goes, inspiring her team to push the boundaries of design.

stimulating aspect of the work. Every day I learn something new that makes me a better designer. That is my pursuit of happiness.”

Passionate about fashion and fine jewellery, Zoya’s taste for exquisite craftsmanship and beautifully detailed interiors is noticeable in all her work including her most recently appointed projects: a Tribute hotel facing the iconic Javitz Centre in New York City, and a boutique hotel in Canada’s celebrated Niagara region. More than a talented designer, Zoya is a goal-oriented, dynamic spirit that impeccably embodies Studio Munge’s standards of excellence and hospitable approach to design.

“Staying relevant is the most challenging yet

CONTINUOUS SUPPORT THROUGH RESOURCING IN ALL PROJECT PHASES

PROJECT KICK OFF - BUILDING A FOUNDATION

- Included in internal project kick off to understand client and Alessandro ("A.M.") expectations on aesthetic and materiality
- Help understand the Type of project to get an idea of budget parameters in order to suggest materials and product in a certain range

When to include resourcing:

- Internal Project Kick Off with A.M. #1st meeting

CONCEPT - AESTHETIC DIRECTION

- Understand project visual direction to suggest project specific brands and products
- Develop an understanding of the project to keep it in mind when generally learning about different products

When to include resourcing:

- Upon completion of the concept presentation, 1 meeting to get a download from the team

SCHEMATIC - REAL DESIGN, REAL MATERIALS

- Support in appropriate material and product selections
- Find solutions for design elements that are feasible and appropriate
- Support in material understanding in relation to their application

When to include resourcing:

- Internal Team meetings (not with A.M.), when discussing tasks in relation to architectural and FF&E finishes

DD - MAINTAINING DESIGN INTENT

- Aid in any re-selections if necessary

Suggested ion When to include resourcing:

- Internal Team meetings (not with A.M.), when discussing tasks in to any VE necessary for the project

A portrait of a woman with long, dark hair, wearing a black top, sitting in a wooden chair. The background is dark and out of focus.

“Every step of the way I am by your side, ready to support you in bringing the vision to life. There are so many products and suppliers I can share so reach out; I am there for you.”

PROPOSED APPLICATION: High End Commercial and Residential
TYPICAL FLOORING LINE

REP: Dean Wheeler
dean@khayeriflooring.com
www.khayeriflooring.com

SIZE
6 1/2" WIDE
6 MM THICK

CONSTRUCTION
ULTRA-DURABLE
ECO-CERTIFIED
BUILT-IN ACOUSTIC CUSHION
LIMESTONE CORE SUPPORT

UV COATING

WEAR LAYER / WOOD VENEER

LIMESTONE CORE

STANDARD VINYL
BALANCE BOARD

BUILT-IN ACOUSTIC
RUBBER / CORK UNDERLAY

HAND-OILING BRINGS OUT THE NATURAL BEAUTY AND CHARACTER OF THE FOREST-GROWN FRENCH WHITE OAK



VERSAILLE COLLECTION

Synonymous with extravagant opulence, the Palace of Versailles is one of the greatest achievements of French 17th century art. Featuring old world European craftsmanship, each plank of Versailles hardwood flooring is an artisan masterpiece. Custom-made in the Netherlands, this collection features the ultimate structural support with 100% Marine Birch backing topped with premium, sustainable, old-growth French White Oak.



MEMORIES OF SCANDINAVIA

Inspired by travels through Norway and Denmark, Khayeri brings the distinctly Scandinavian affinity for minimalism and functionality to his Memories of Scandinavia line. Demonstrating a uniquely seamless design with sanded smooth flooring and signature no beveling, this line creates an effortless sense of balance that is both timeless and beautiful. Combining the Sophistication of wide & long plank flooring with choice of seamless smooth or lightly brushed two toned design.

PROPOSED APPLICATION: All project levels
BUILDER GRADE FLOORING LINE

REP: Wassam Qassin
wasam@khayericonstructor.com
www.khayericonstructor.com

SOHO COLLECTION

Beautifully stylish, incredibly durable, and developed specifically for large-scale projects, our Memories of Soho Collection presents itself as an ideal alternative to HDF (High Density Formboard) flooring, such as laminate & veneer engineered wood floors.

VERONA COLLECTION

Inspired by Verona's picturesque Piazzas, cobblestone roads, and renaissance art, Khayeri brings Northern Italy's lasting beauty and colour palette to the memories of Verona collection.

Rune NYC

PROPOSED APPLICATION: High End Residential

RUNE REP Jessica Kalweit

jessica@rune.nyc

www.rune.nyc

RUNE represents an international portfolio of museum quality fine furniture artisans who produce exceptional, handcrafted work. Our artisans work in a variety of media, executing pieces as unique as they are exquisite. Their work is featured in permanent collections at institutions including Smithsonian Art Museum and Museum of Arts and Design (MAD), in private residences, on superyachts, in Five Star hotels and luxury retail applications. RUNE founder Jessica Kalweit is a veteran of the luxury interiors industry, champion of the Arts, UCLA graduate, part-time Angeleno and New York City resident.



GENEVIEVE BENNETT

www.genevievebennett.com

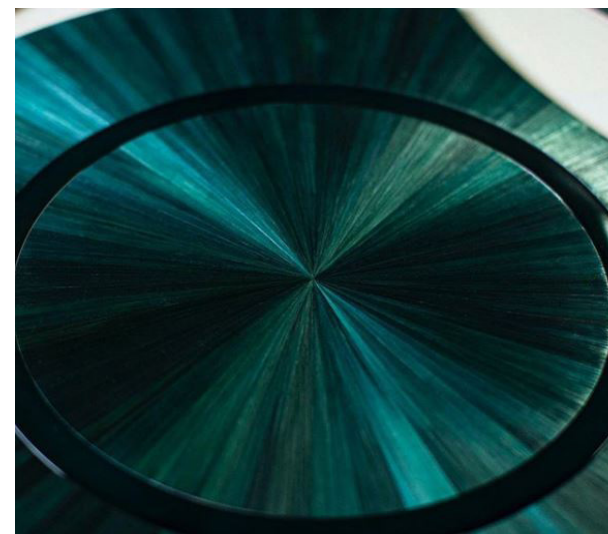
Her work references the tradition of decorative arts whilst being enabled by sophisticated technology. Driven by a love of natural luxurious materials – typically working in premium leather – she applies an instinctive command of pattern and a commitment to craft to create pieces which are timeless elegant and thoroughly contemporary.



LALIQUE CRYSTAL

www.lalique.com

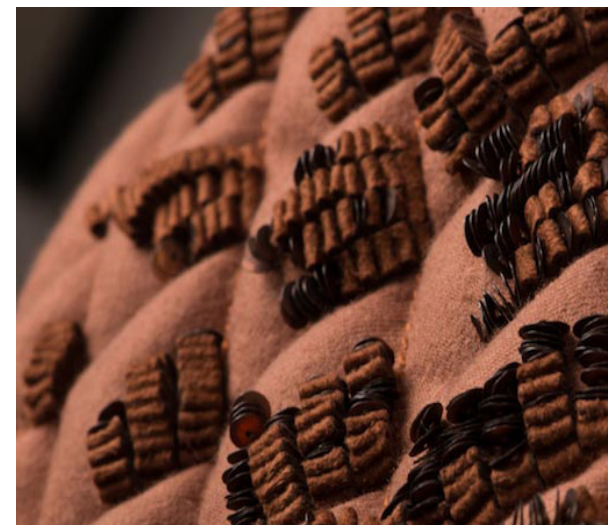
Today, the vision of the brand is to prolong the creative genius of founder René Lalique by issuing superb perfume bottles in crystal, reviving exciting and emotional jewellery designs, pushing the limits of the factory by creating decorative objects with its signature satin contrasts, carrying out major architectural projects, crafting a unique Lalique world dedicated to the home, working with renowned artists to produce limited editions in crystal and to recreate its cultural heritage.



JALLU EBENISTES

www.jallu.com

JalluEbénistesaremastercraftsmendevoted to creating museum-quality furniture, wall panels, and bespoke commissions for private residences, superyachts, and elite brands including Dior, Lalique, Chaumet, and Cartier. Their renowned work features extraordinary surfaces, including straw marquetry, gypsum, vellum, and pyrite, as well as precious wood veneers and fine metalwork.



P&L STUDIOS

www.plstudio.fr

P&L Studio offers luxury and design professionals the creation of unique pieces and limited series, in the handling of flexible materials and three-dimensional embroidery. Our work involves both surface work (transformation, refinement of materials) and sculpture of volumes.

Libri Products

PORTFOLIO

VITA

SM

STUDIO

CONNECT

SIGN OUT

LIBRI HOME

PRODUCTS

SUPPLIERS

JOURNALS

KNOWLEDGE

Q

U





CHAR-STL-02-01



PHLA-STL-01-01



PALM-STL-03-01



KOST-STL-01-01



PORTFOLIO

VITA

SM

STUDIO

CONNECT

SIGN OUT

LIBRI HOME

PRODUCTS

SUPPLIERS

JOURNALS

KNOWLEDGE

Q

U

SMCL-STL-01-01

SUPPLIERS: STUDIO MUNGE

CHOOSE BOARD

▼

ADD TO BOARD

NO CONTACT AVAILABLE

CONTACT SUPPLIER





Spalla Bar Stool

DESIGNER
Studio Munge

MATERIAL TYPE
Bar Stools
Furniture Fixtures and Equipment

FOR MORE INFORMATION, CONTACT LIBRI@STUDIOMUNGE.COM | 1.416.588.1688

PORTFOLIO
VITA

ABOUT SM
COLLABORATORS
CAREERS

CONNECT
SIGN IN
SIGN OUT

WEBSITE CREDITS
© 2020 STUDIO MUNGE

Search ...

Q

@

f

in

▶

Amal Toronto



Door handle detail meaning "Welcome".

In the heart of fashionable Yorkville, nestled in between designer boutiques and world-renown jewellers, Amal shines bright as the “Life of the Party” introducing mystical flavours and style to the upscale Toronto neighbourhood. Opened summer 2020 following over 25 years of creative partnerships, the joyful restaurant is the latest entertainment haven by hospitality maverick Charles Khabouth of INK Entertainment and Studio Munge bringing together families and friends in the (re)discovery of Lebanese culture.

Amal with its myriad of modernized hand-

crafted details is a feast for the eye – an all-white space harmonized with colourful bursts of pastel blues, mint greens and burned oranges reminiscent of the Mediterranean eastern shores.

Featuring delectable dishes by executive chef Rony Ghaleb, Amal celebrates the finest of ingredients and design artistry in a hypnotic dance of textures and flavours. From the hand-painted ceiling tapestry and murals to the beautifully detailed furnishings, everything in the Studio Munge designed venue inspires escapism - inviting the guest to explore the infinite possibilities of the starry night ahead.



Clockwise: Sense of arrival ft custom host stand, custom rug and hand painted mural; chandelier detail; bar ft spalla bar stool.





Semi-private dining room ft custom shelves & sculptures commissioned by GZ Art Co.



*Clockwise: Main dining room entry ft curved custom service station and partition screens; custom rug detail; dining room view.
Next page: Main dining room ft custom seating and tables under hand-painted ceiling tapestry commissioned by GZ Art Co.*





Dining room elevation view ft layering of warm and cool colour schemes.



Clockwise: Dining vignette ft custom banquettes, chairs and tables; Cushions detail ft embroidered textiles; Reverse dining view towards the patio. Next page: Banquette view framing private dining room.





Clockwise: Private dining room entry ft laser cut custom screens; weaved lighting detail; elevation ft custom chairs & tables



Next Page: Elevation towards dining room ft all custom screens, table, chairs, stool & service station.



Environmental view ft textile layering, custom screens, banquettes, tables and chairs.



Patio view through lush landscaping.



Clockwise: Outdoor dining vignette ft custom stools, tables, banquettes; custom banquette detail; patio view ft custom graphics on glazing.



Pendry Chicago



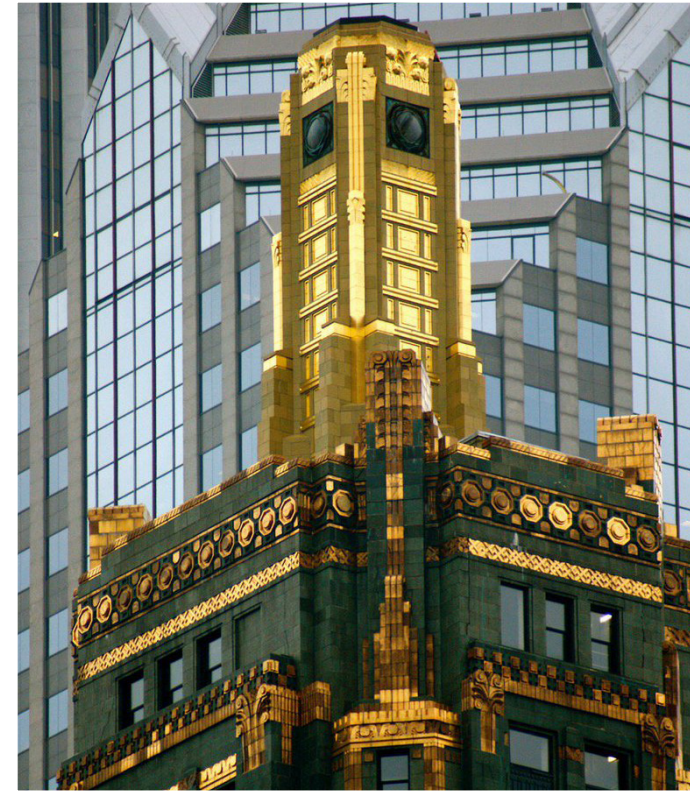
Cloud Gate by Sir Anish Kapoor, Chicao, IL, USA.

Located only steps away from Millenium Park and Chicago's iconic Cloud Gate, where the Hard Rock and St. Jane hotels once stood, Pendry Chicago and its vibrant F&Bs designed by Studio Munge will soon become a destination in The Windy City. Within one of Chicago's most recognizable Art Deco highrise - The Carbide & Carbon building, the hotel embodies transitional elegance infused with a touch of British sophistication.

Following the Pendry Hotel and Residences in Tampa, this is our second property by

the premium luxury brand, which is quickly positioning itself as a leader in the market place. With a scope of work currently limited to the ground floor, including the sense of arrival, lobby reception, lobby lounge, retail and destination F&B, our design will set the tone for the experience ahead.

Stay tuned as we soon reveal concept for this most extraordinary project.



Clockwise: The Carbide & Carbon building ft gold plated detailing and glazed ceramic cladding; St Jane canopy; heritage Art Deco lobby lighting detail.





Existing St Jane Hotel Reception and Lobby.



Clockwise: Existing St Jane lobby lounge fireplace vignette, lobby lounge social lounge.





Existing Mr Brown Jamaican Restaurant to be converted to Bar Lounge.



Existing Free Reign Restaurant & Coffe Bar to be converted to Destination Restaurant.



138 Yorkville



Street view ft concept store at 138 Yorkville, Toronto, ON, CA.

In the hearth of upscale Yorkville, steps away from designer boutiques, world-class museums and five-star luxury hotels, discover 138 Yorkville - an ultra-high-end residential tower by Cityzen Development Group & Greybrook Development.

With biophilic architecture by BBB Architects and timeless interiors by Studio Munge, the landmark project is inspired by Stefano Boeri's Bosco Verticale or Vertical Forest. The building epitomises worldly sophistication and environmental connection featuring soft curves, expansive stone cladding and

bronze accents treated in a contemporary fashion. The dramatic sense of arrival is intensified by dancing fountain jets enclosed in a glass vitrine while a mature heritage tree grounds the plaza with soulful legacy.

Follow this project closely as we soon reveal the overall concept and sales office for this groundbreaking project.



Bosco Verticale inspiration for biophilic architecture.





3D Model Minotti sofa set available for purchase.

With a wide range of high-quality 3D models available for purchase at low cost, 3Dsky is an incredible database and resource to build ultra-realistic renderings. Whether it be a piece of high-end furniture, a dining set, flower arrangements or small accessories, the variety is remarkable. Use the search engine and explore users for best results.

www.3dsky.org



Clockwise: Contemporary accessories set; modern dining set; luxury bathroom accessories set.

Renderings - In-house



MGM Qingdao Lobby, Qingdao, China.

Quickly improving due to cross-pollination and mentorship, our in-house renderings are of exceptional quality. Wowing clients and partners alike, discover some of the most beautifully executed artwork in our range of international projects.

Keep up the outstanding work and keep sharing knowledge helping each other reach new heights of design excellence!



Clockwise: ADD vignette ft all custom FF&E; open kitchen elevation; grand ballroom at MGM Qingdao.



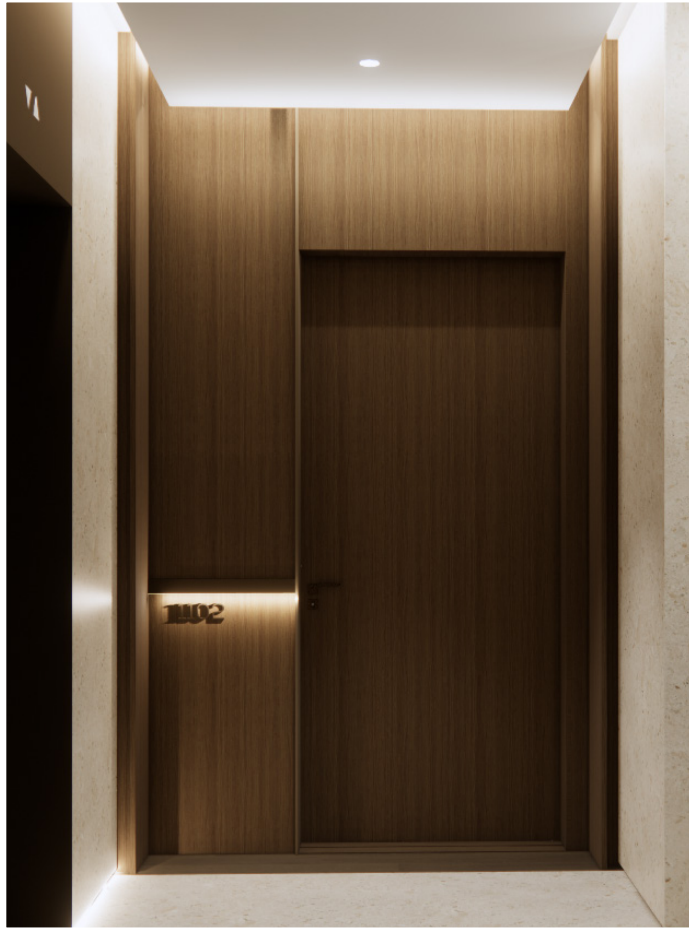


Sense of arrival and lobby lounge at Canopy hotel by Hilton, Toronto, Canada.



Typical bedroom ft custom FF&E and standard brand design elements including overhead canopy.



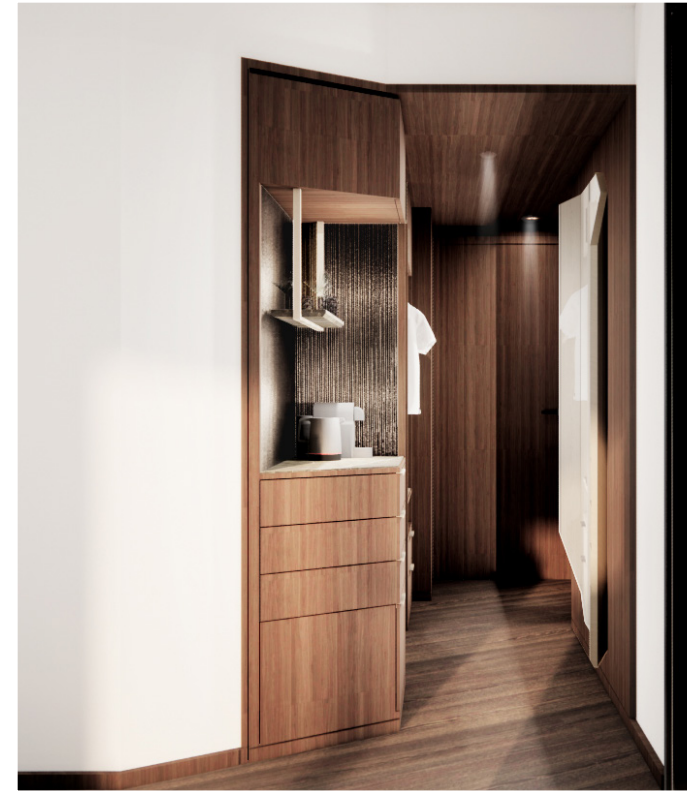


This Page Clockwise: typical elevator lobby at 50 Scollard, Toronto, Canada; signage detail ft LED illumination. Next Page: synagogue library at Glenhill hotel & residences, Toronto, Canada.



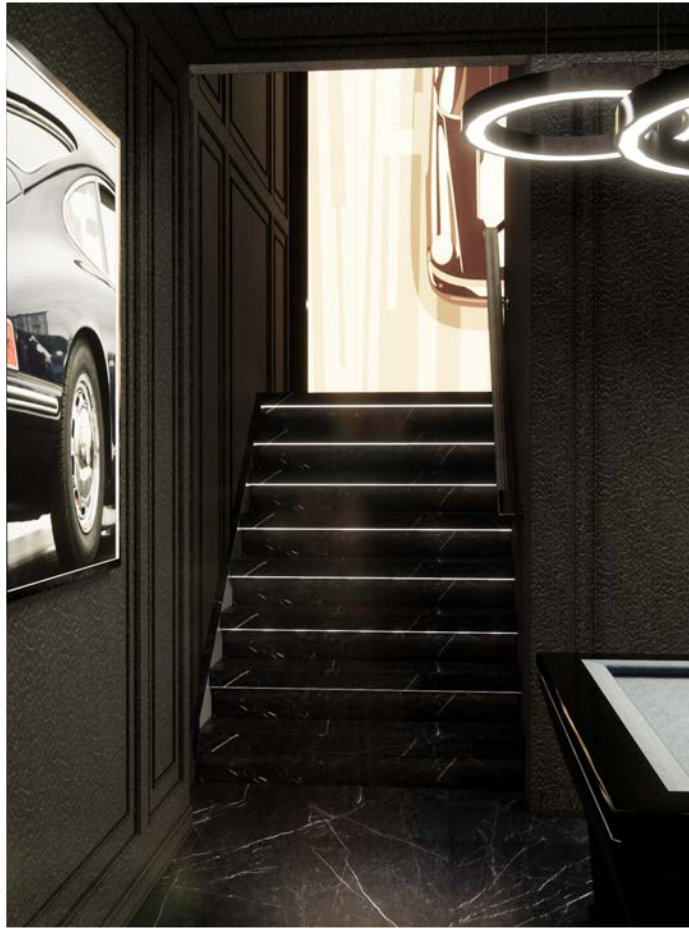


Lounge and Lobby Bar at Tribute Hotel by Javitz Centre, New York City, USA.



Clockwise: Bedroom in Walnut scheme - custom cabinetry vignette; integrated bathrooms; bedroom elevation ft custom FF&E.





*This Page Clockwise: Stair vignette in Man Cave at Edgehill Residence, Toronto, Canada; Wall upholstery detail ft contrasting stitching; lounge ft car display vitrine
Next Page: Speakeasy Lounge at Edgehill Residence, Toronto, Canada.*



Renderings - Pixel Art



Typical bedroom ft custom FF&E at Muir Hotel, Halifax, Canada.

A great partner able to deliver cost-effective solutions, Art Philippov at Pixel Art is a go-to source for many of our current projects including Muir in Halifax, Nobu Hotel and Canopy by Hilton in Toronto, The Ray at Delray Beach in Florida as well as the very exclusive Glenhill boutique hotel & residences.

With rates typically ranging from US \$800 to US \$1500 per view, Pixel Art is an affordable yet qualified rendering firm that we look forward to growing our relationship with.

Contact:
Art Philippov
artiomphilippov@gmail.com
www.pixelartstudio.ca



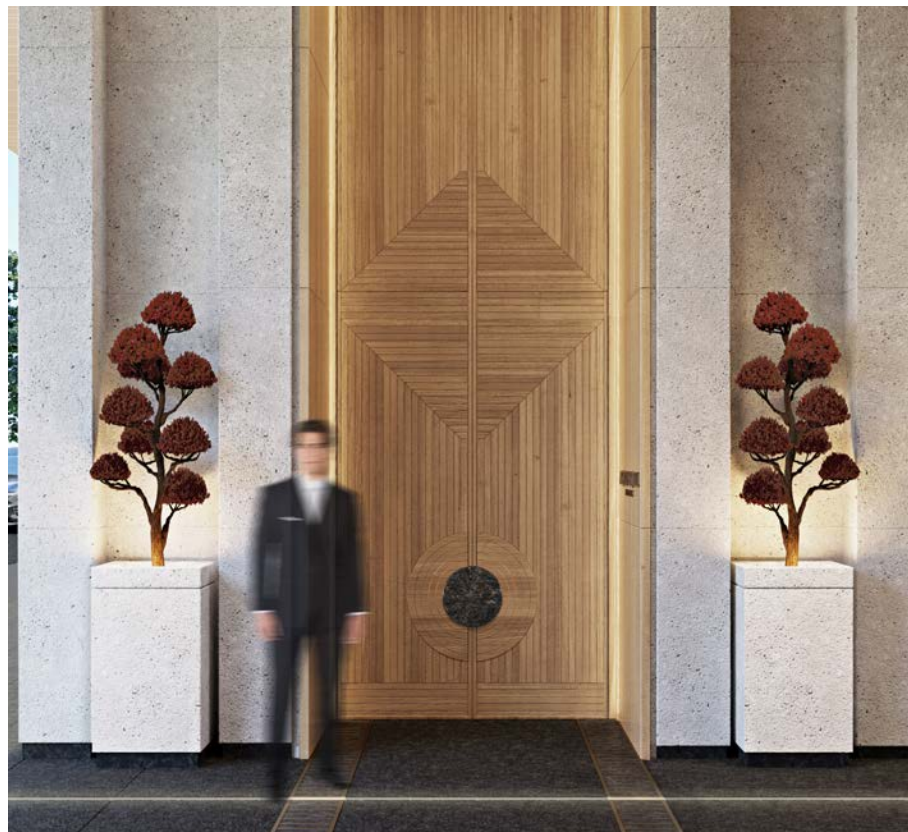
Clockwise: Bedroom vignette ft custom FF&E; bathroom vignette; lobby lounge vignette ft custom FF&E.



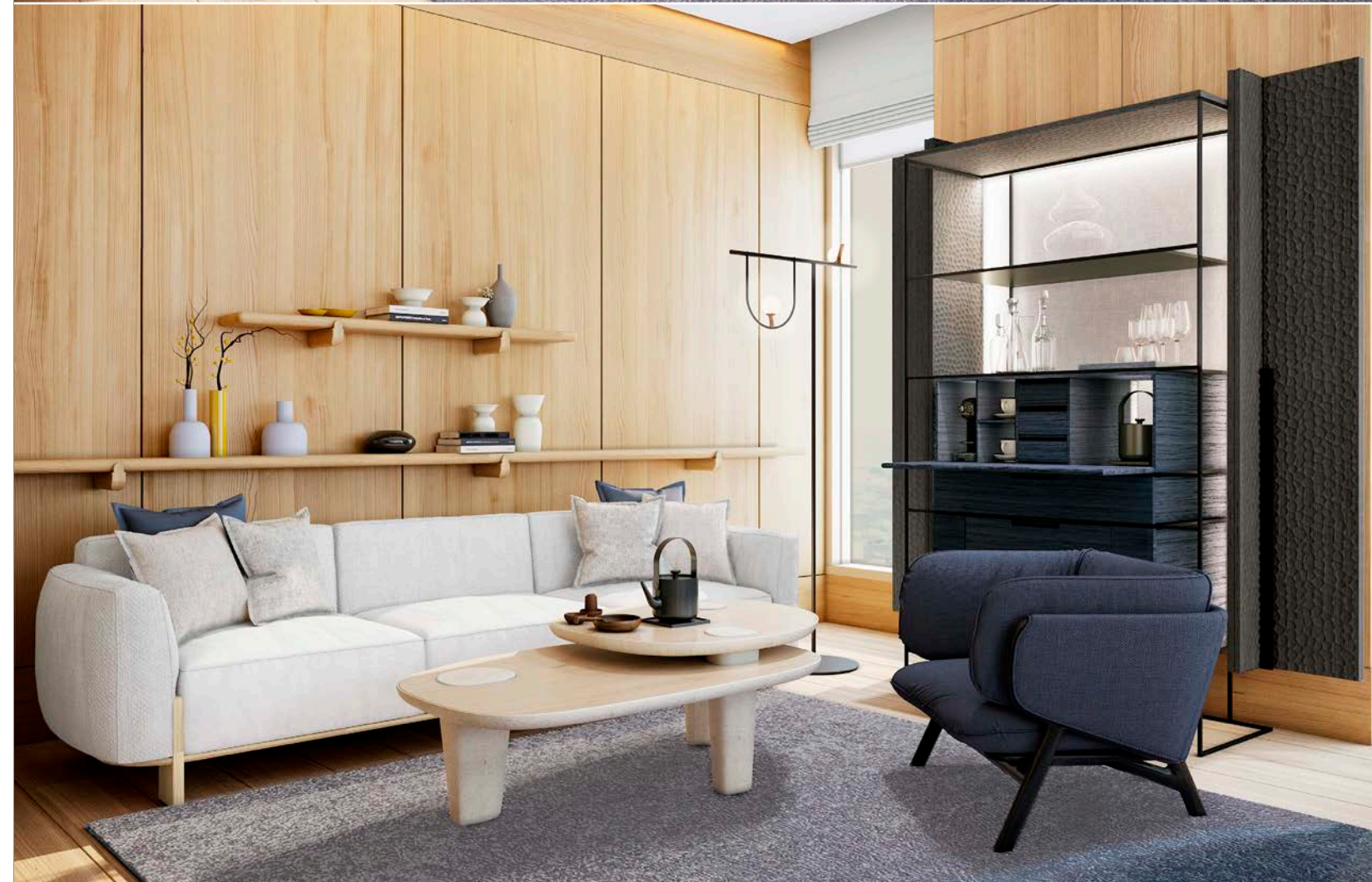


*This Page Clockwise: The Ray Rooftop Bar
Lounge ft waterfall edge pool.
Next Page: The Grill restaurant at The Ray
hotel in Delray Beach, Florida.*





*This Page: Nobu Toronto, Hotel Arrival
ft statement door; hotel lobby lounge ft
fireplace; typical elevator lobby vignette
Next Page: Typical guestroom - beige scheme*





Lobby & Lounge at Glenhill boutique hotel & residences, Toronto, Canada. Next page: Feature staircase and rooftop pool and lounge.

Renderings - Caramel



Lobby Lounge at No. 7, Rosedale, Toronto, Canada.

Able to beautifully capture light in spaces, Caramel is a valued design partner in the production of high-quality renderings. The most recent appointments include No. 7, Rosedale - a sophisticated luxury residential project featuring two distinct interior schemes, contemporary and transitional.

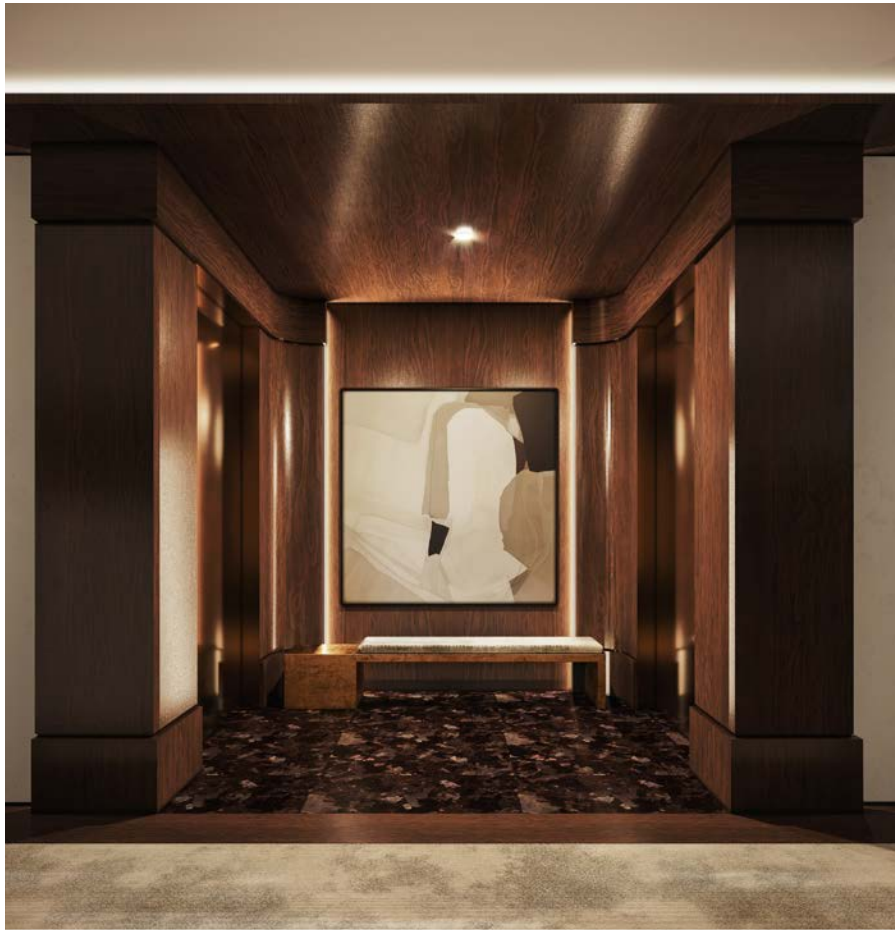
With rates typically ranging from US \$2000 to US \$3000 per view, Caramel remains in the affordable range for a professional service and beautiful imagery.

Contact:
Nicole Vigneux
nicole@caramelbrand.com
+1 (289) 221-9634
www.caramelbrand.com



Clockwise: Fitness Centre Arrival & inside views. Spa vignette ft steam showers and dry sauna.





*This Page: Elevator lobby & typical corridor
ft mahogany wood panelling; living room
vignette in transitional scheme ft cove lighting
& moulding details.
Next Page: Living room in the contemporary
design scheme.*





This Page & Previous: Lobby Lounge & Chappelle & Ballrooms at The Pearle hotel, Bridgewater, Canada.

Renderings - Binyan

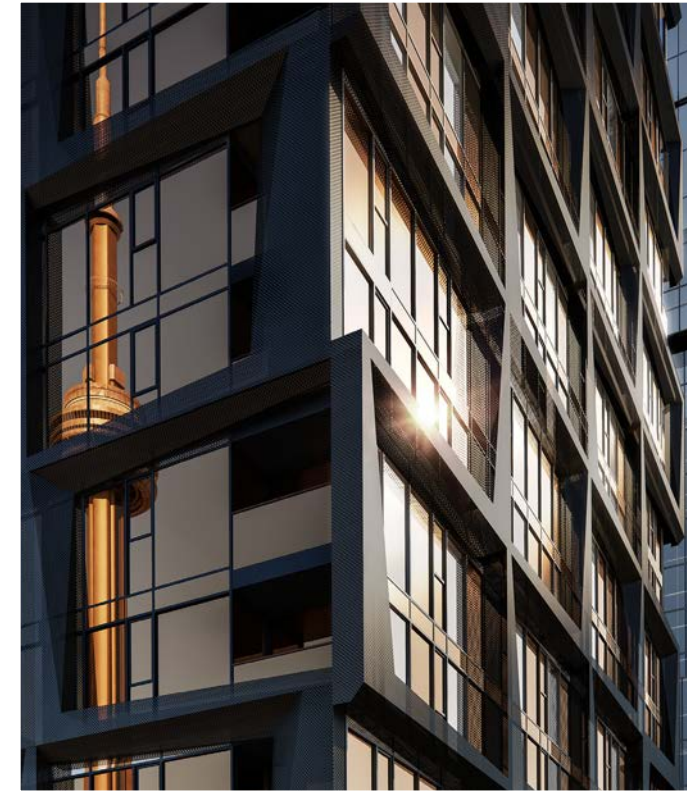


Residential Lobby at Nobu Residences, Toronto, ON, CA.

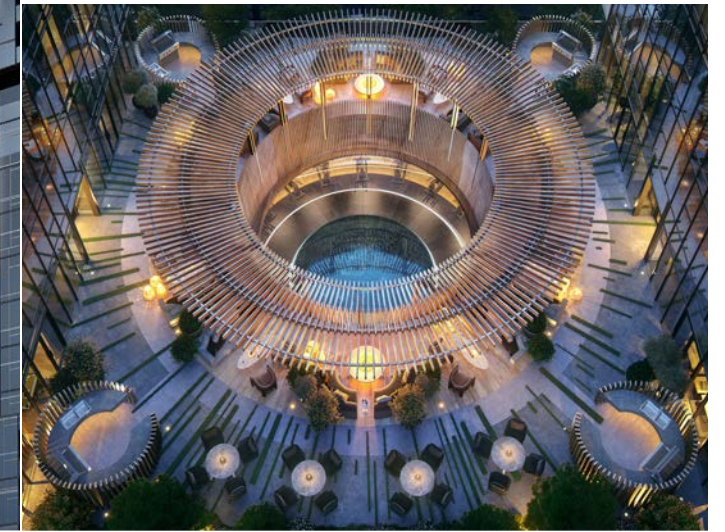
A well established creative studio with satellites in New York, London and Australia, Binyan offers more than visualizations services branching into multifaceted brand content production. Our most recent collaboration occurred when the high-end studio was commissioned by the Madison Group to produce a series of renderings for Nobu Residences.

Because of the wide variety in offered packages, rates should be confirmed on a

case-by-case basis, and the recommendation should be reserved for luxury residential and hospitality projects with an extensive marketing budget. www.binyanstudios.com



Clockwise: Facade detail; Podium shared terraces ft lounging and dining; Fitness Centre ft circular atrium and reflective pond.



Renderings - JORG



Penthouse on the Esplanade, Toronto, ON, CA.

Creating compelling visual narratives mixing wide angles views and close up textural vignettes, JORG is a strong player in the creation of ultra-realistic and storytelling images. With offices in Toronto and London UK, their international flair and ability to translate a design vision are extraordinary.

With rates typically ranging from US \$3000 to US \$4000 per view, JORG is a resource best used for luxury residential and hospitality projects with an adequate marketing budget.

Contact:
David Jorgensen
davidj@jorgcc.com
+1 (416) 879-3446
www.jorgcc.com



Clockwise: Living Room Vignette ft Spiral Staircase; Dining Room Vignette ft Double-Sided Marble Fireplace; Media Room ft Double-Sided Marble Fireplace.



