



DINING AS THEATRE

SCHEMATIC DESIGN

2559 YONGE STREET, TORONTO

MARCH 2, 2018

STUDIO  
MUNGE

**FLOREO** *flor-re-o*, meaning "to flower", in Flamenco this describes the flowering movements of a dancer's hands. A women's hands and fingers may delicately move while a mans may move with strength.

## LOCAL CONTEXT REGIONS OF INFLUENCE



A PASSION FOR TASTE



## SPANISH BASQUE COUNTRY

Located along the northern coast of Spain, bordering France, lies the Spanish Basque Country, a collection of provinces defined by a lush mountainous landscape and humid oceanic climate. With painterly landscapes and fertile earth, the Basque Country exudes a natural vitality for cuisine. With the highest density of Michelin Star Restaurants globally, this region continues to set the stage for remarkable dining experiences.



COASTAL AIRINESS



FRESH & VIBRANT

AN HOMAGE TO HISTORY



# ANDALUSIA

Situated along the coastal south of Spain is Andalusia. A collection of mountainous provinces which meet both the Atlantic Ocean and the Mediterranean Sea. A diverse cultural history, including Islamic and Roman influence, is prevalent within this region's traditions, architecture and cuisine. While seafood is in abundance, a strong agricultural community also enriches this area's specialties which include the well known Iberico and Serrano Hams as well as notable sherry wines.

Andalusia is the birthplace of Flamenco, an art-form which expresses this region's fiery passion for movement, tradition and beauty.



THE ART OF FLAMECO



TONE ON TONE DETAIL

# GUEST WALKTHROUGH:

Exploring the guests' journey through the lens of interior design across all touchpoints:

- 01 **FLOREO** *FLOWERING HAND MOVEMENTS*  
EXTERIOR FACADE WITH ADDITION
- 02 **ENTRADA** *THE DANCER'S ENTRANCE*  
GROUND LEVEL ENTRY
- 03 **AIRE** *THE ATMOSPHERE OF THE PERFORMANCE*  
GROUND LEVEL DINING ROOM
- 04 **ALANTE** *THE FRONT OF THE STAGE*  
GROUND LEVEL SHOW KITCHEN
- 05 **DUENDE** *THE SOUL SOURCE THAT INSPIRES FLAMENCO*  
ARTISTS OF INFLUENCE
- 06 **LLAMADA** *A BREAK IN THE DANCE*  
MEZZANINE PRIVATE DINING
- 07 **ATRAS** *THE REAR OF THE STAGE*  
LOWER LEVEL RESTROOMS
- 08 **CAMBRIO** *LIGHTENING OF KEYS TO END A SONG*  
UPPER LEVEL OPEN AIR BAR



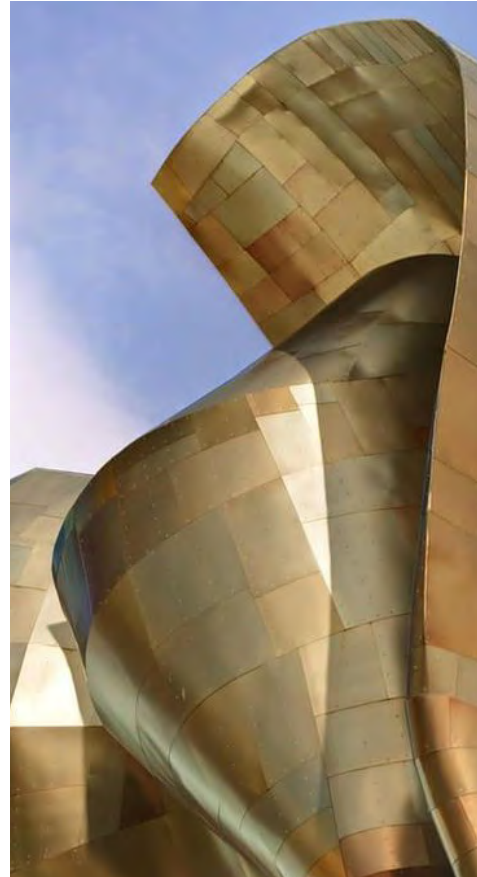
TEXTURAL LAYERS



BOLD FLAVOUR



MOVEMENT & CONTRAST



## DINING AS THEATRE

An open kitchen featuring a sculptural live fuel grill becomes the backdrop to the Chef's Stage, a dining experience where cooking is a fiery performance.

The live fuel grill reaches for the sky, extending through all dining levels, animating and interconnecting the exterior and interior environments.

The audience is immersed in movement and passion within a space that transforms effortlessly from day to night and from season to season.

A dining experience inspired by the dynamism and decadence of a theatrical performance.



ENVELOPED IN PASSION

INSPIRED BY RE-INVENTION

A SIGNATURE PERFORMANCE

# A BREATH OF FRESH AIR

Paying homage to the oceanic building facades of coastal Spain while quietly encapsulating the jewel within.



## MODERNITY

A stained white concrete facade with residentially styled wood windows enlivens this building with a spirit of warm and welcome.



## GOLDEN ACCENTS

Signage Impressions

## ELEGANT MOVES

A sleek glass elevator transports guests directly from street level.



## CLEAN LINES

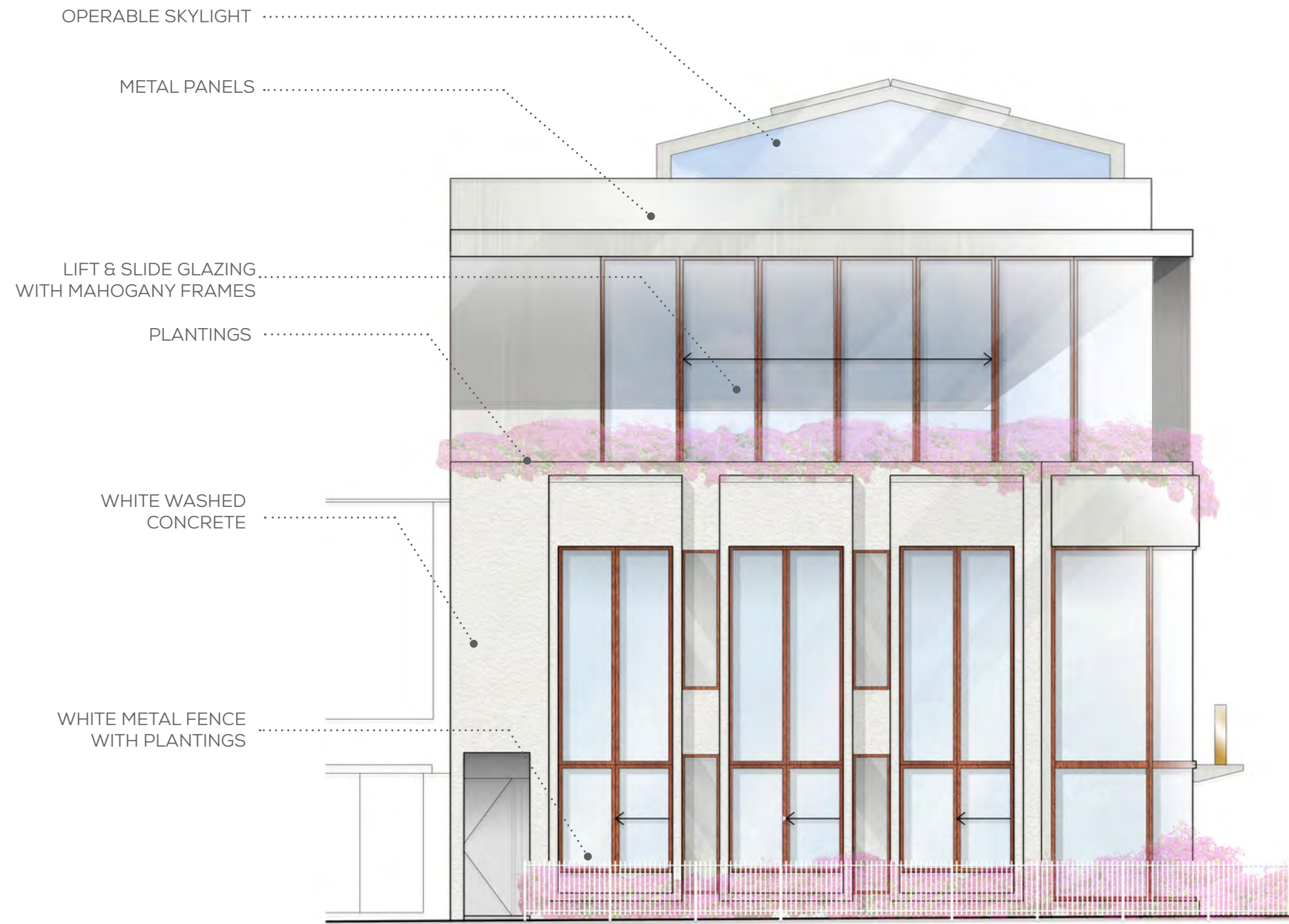
A modern addition hosts a second floor open air dining room.



## BLOSSOMING BEAUTY

A flowering vine such as bougainvillea adds romance to architecture.

01 EXTERIOR FACADE WITH ADDITION *FLOREO* FLOWERING HAND MOVEMENTS *EXTERIOR ELEVATIONS*



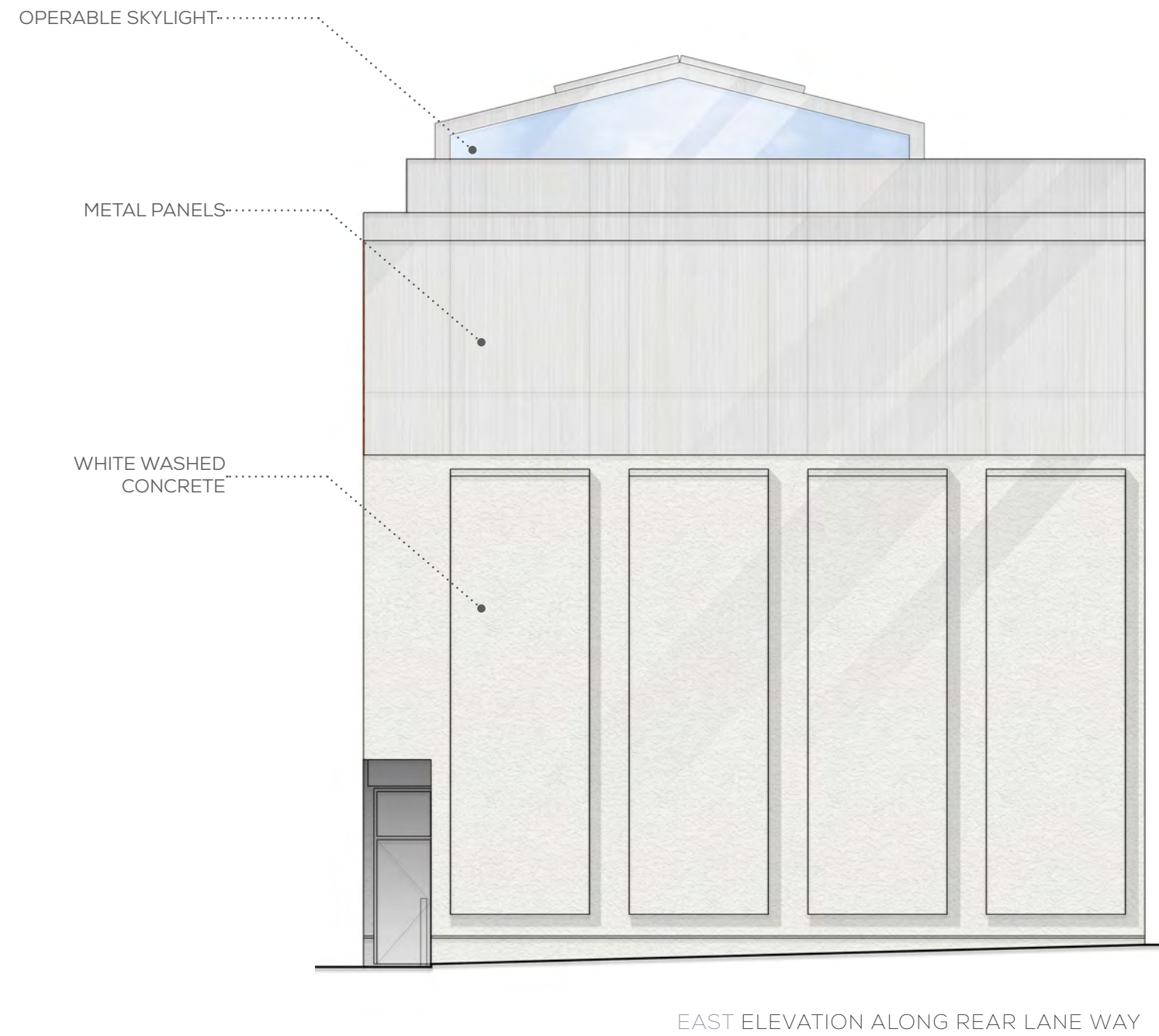
WEST ELEVATION ALONG YONGE STREET



01 EXTERIOR FACADE WITH ADDITION *FLOREO* FLOWERING HAND MOVEMENTS EXTERIOR ELEVATIONS



01 EXTERIOR FACADE WITH ADDITION *FLOREO* FLOWERING HAND MOVEMENTS *EXTERIOR ELEVATIONS*



## THE INNER JEWEL

Upon entry, rich textural hues and stylized sensual forms introduce our guests to the passion within.

### A SENSE OF MYSTERY

A sultry elevator cab interior envelops our guests.



**RADIANCE**  
Directional architectural lighting defines the entry.



**ARTFUL FORMS**  
Residentially scaled furnishings welcome guests into a two story dining room



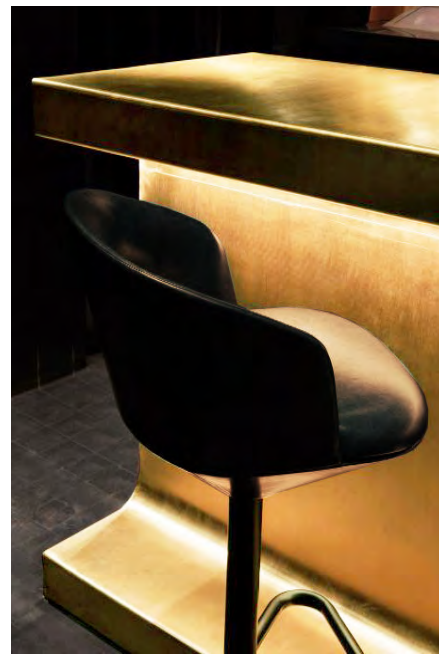
### ELEVATING THE PAST

Traditional silhouettes are re-imagined.



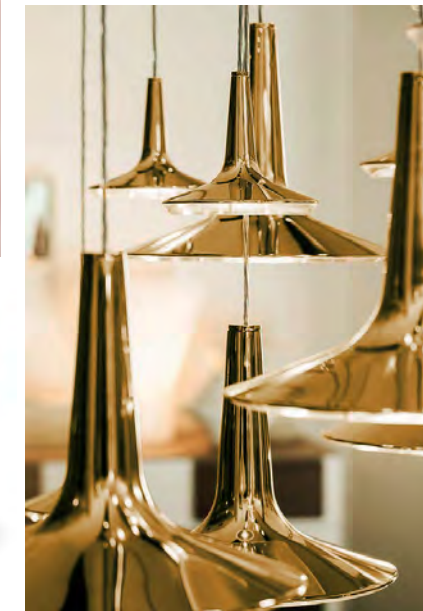
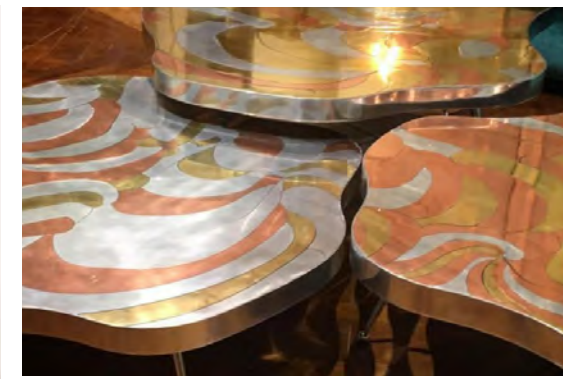
### NATURAL MOVEMENT

Natural materials complement stylized accents.



## THE DYNAMISM OF DINING

A double height volume and a sweeping architectural ceiling coalesce as our main dining room. With richness and modernity, this space reminds us of the luxury of theatre while propelling us forward. All the while, our dining room directs attention to the heart of the venue, an expansive open kitchen, where cooking is performance.



### EXPRESSIVE & RICH

Rich hues and expressive forms animate the dining room.

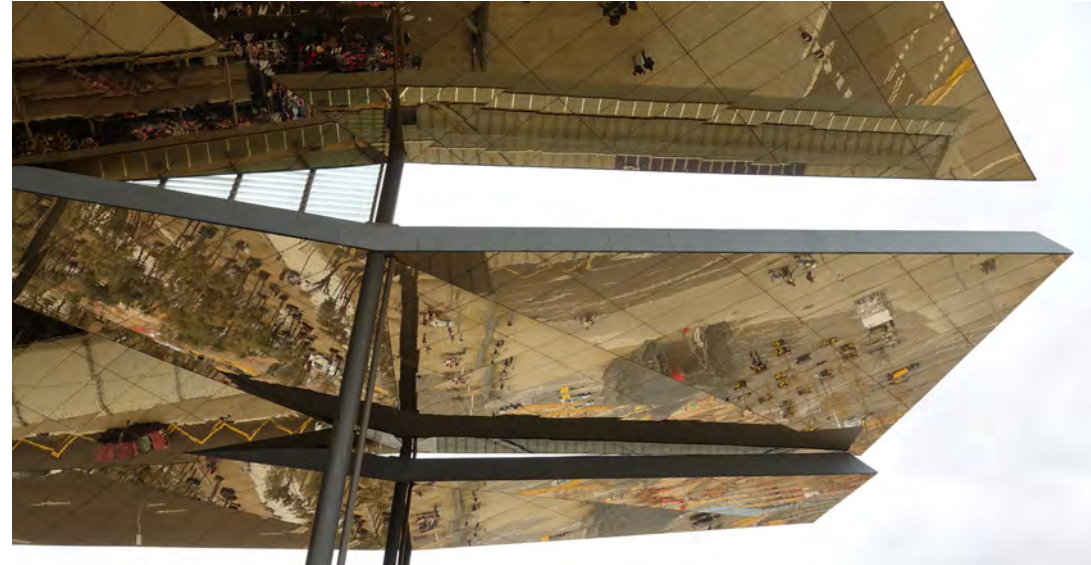
## GILDED TO PERFECTION

The open kitchen extends horizontally beneath an architectural canopy of custom artwork. This golden enclave, modern and minimal, becomes the canvas for creation.



### A CELEBRATION OF FOOD

A lively display, this kitchen showcases an abundance of international and local products.



### A CHEF'S DREAM

A kitchen built with exceptional custom equipment and the utmost respect for the cooking experience.

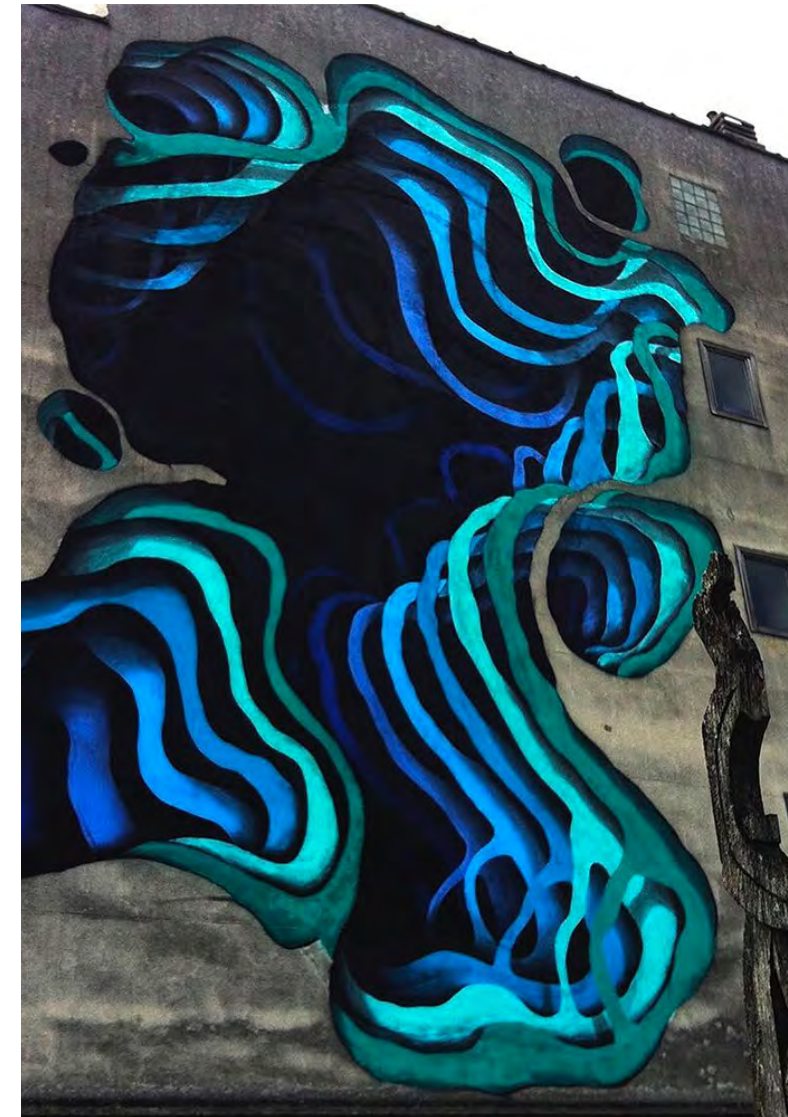


VIVID COLOURS



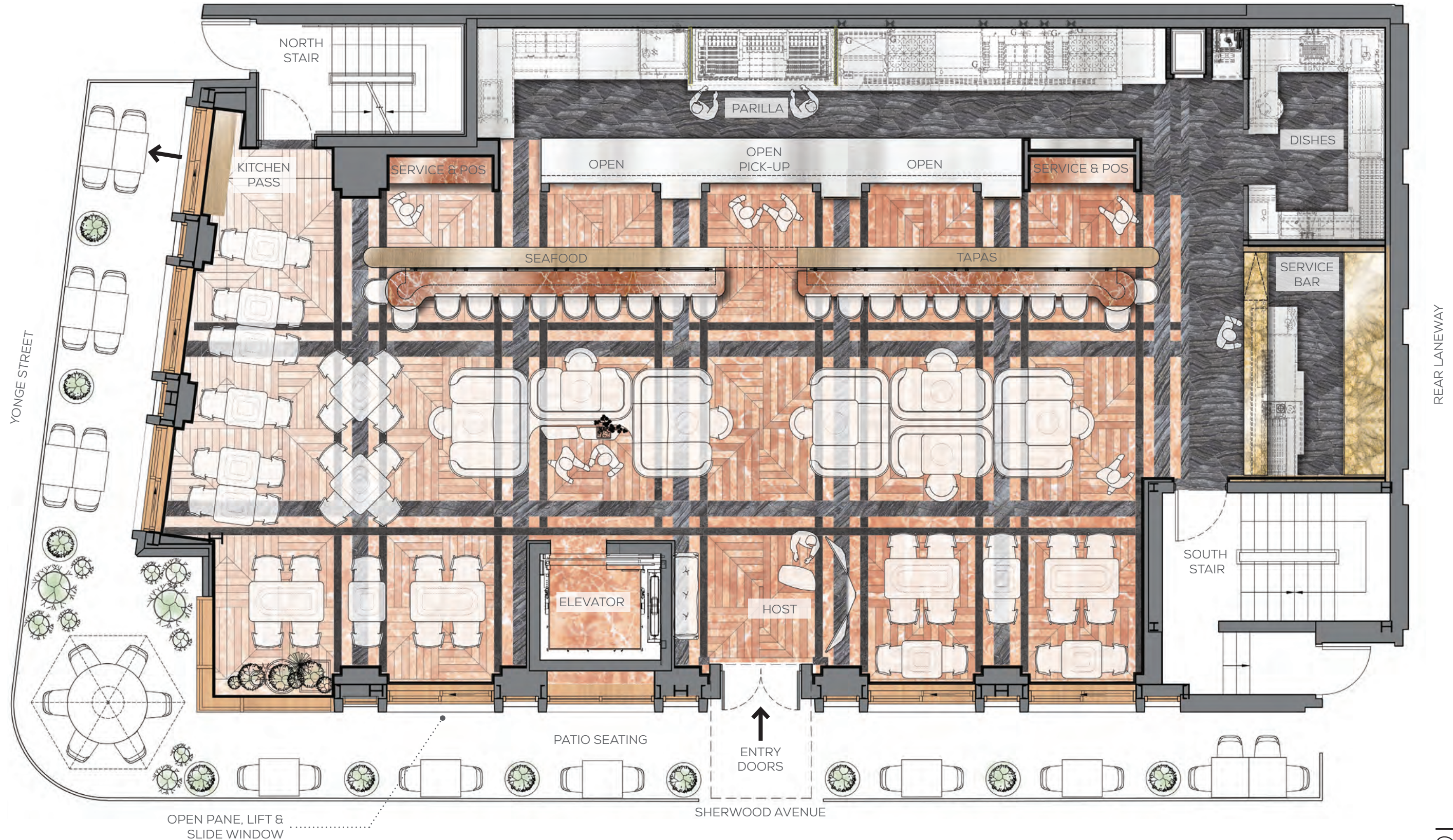
## ILLUSIVE MOVEMENT

German Street Artist 1010 creates cavernous trompe l'oeil artworks in vivid colours.



INCREDIBLE SENSE OF DEPTH

03 GROUND LEVEL DINING ROOM, AIRE THE ATMOSPHERE OF THE PERFORMANCE, FLOOR PLAN, 95 SEATS + 32 PATIO SEATS



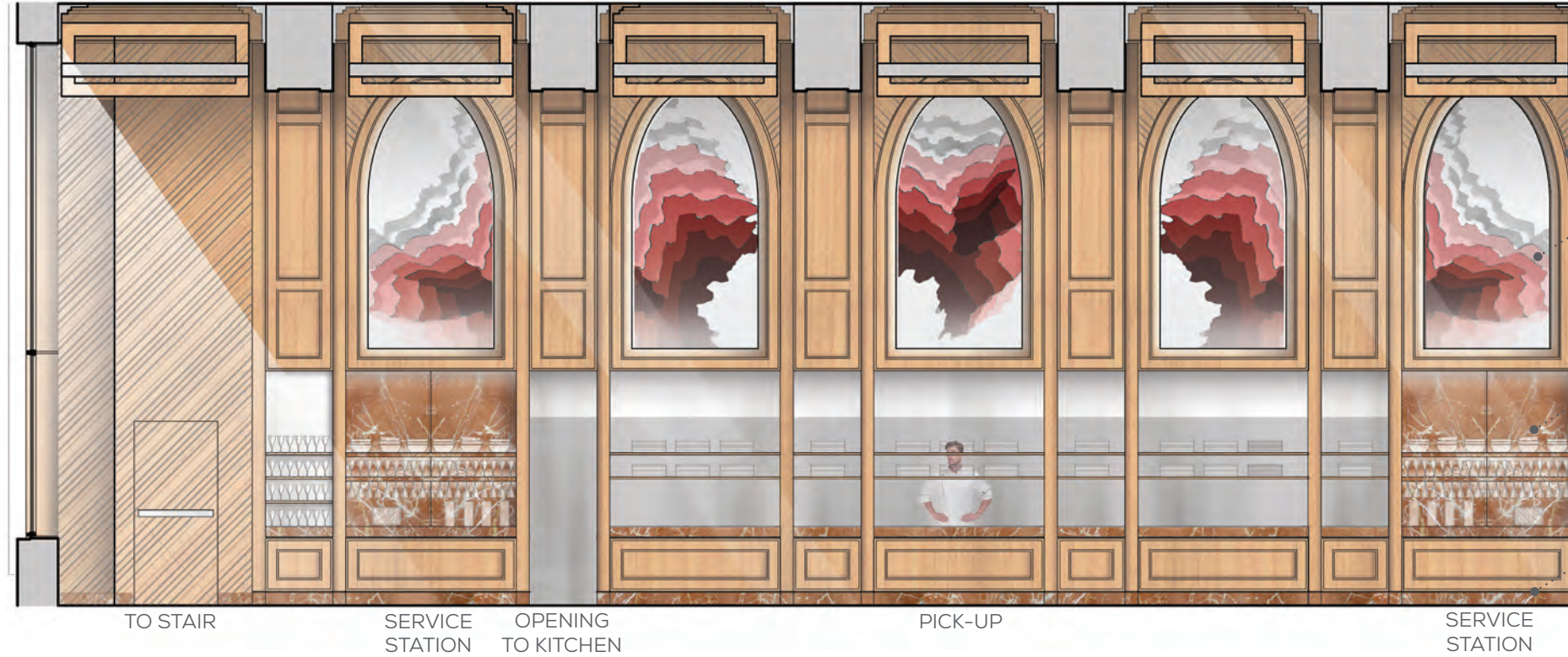
03 GROUND LEVEL DINING ROOM, *AIRE THE ATMOSPHERE OF THE PERFORMANCE, REFLECTED CEILING PLAN*





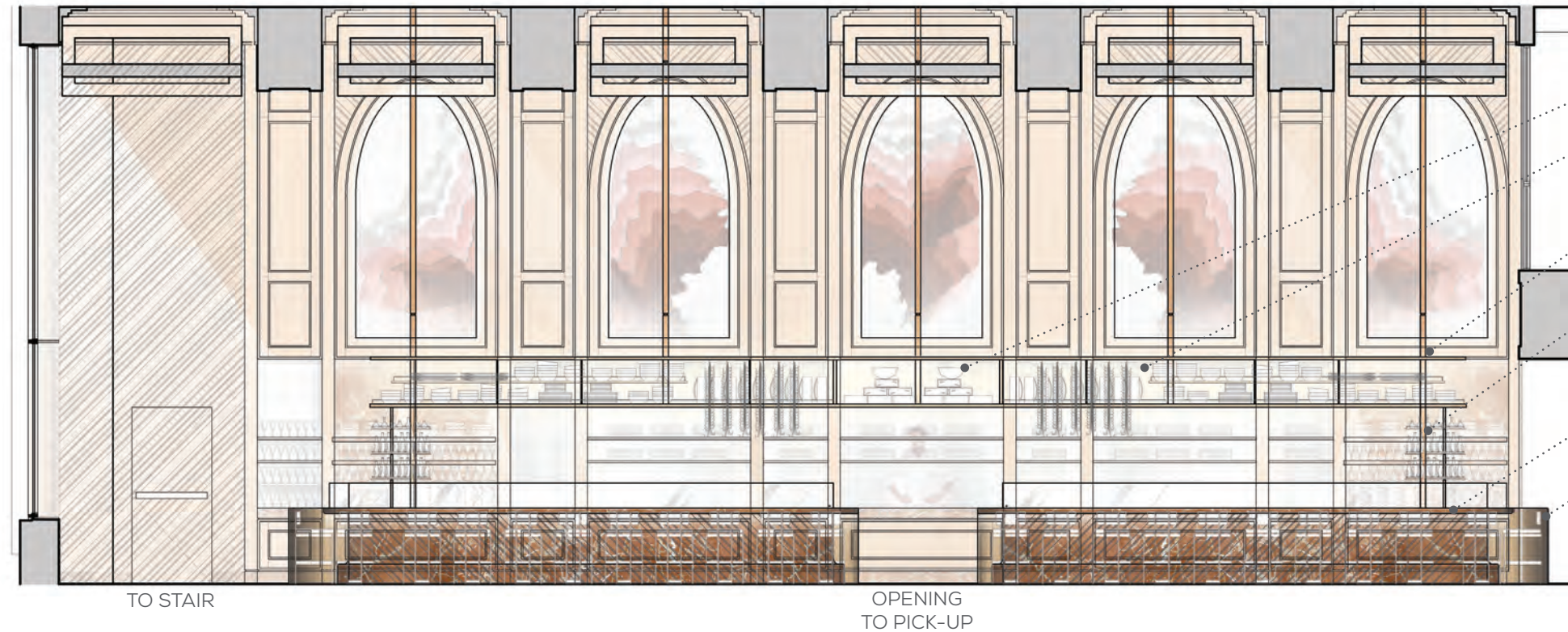
03 GROUND LEVEL DINING ROOM, *AIRE THE ATMOSPHERE OF THE PERFORMANCE, ELEVATIONS*

NORTH ELEVATION-OPEN KITCHEN



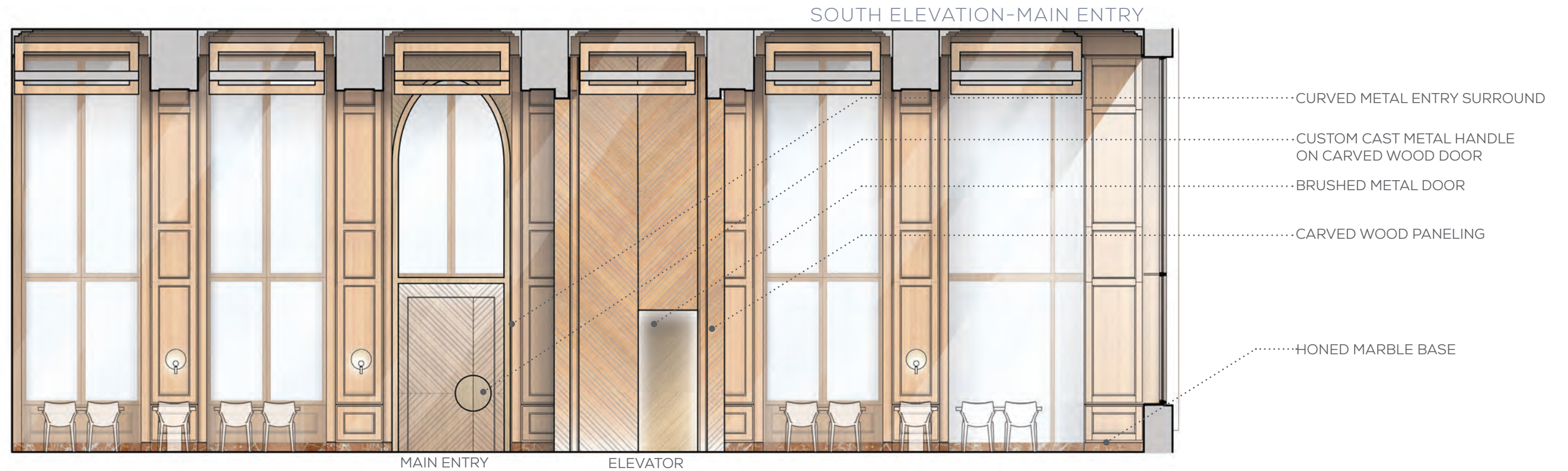
- .....WOOD ARCHES
- .....CUSTOM ARTWORK
- .....HONED MARBLE RECESS
- .....HONED MARBLE BASE

NORTH ELEVATION-DINING COUNTER



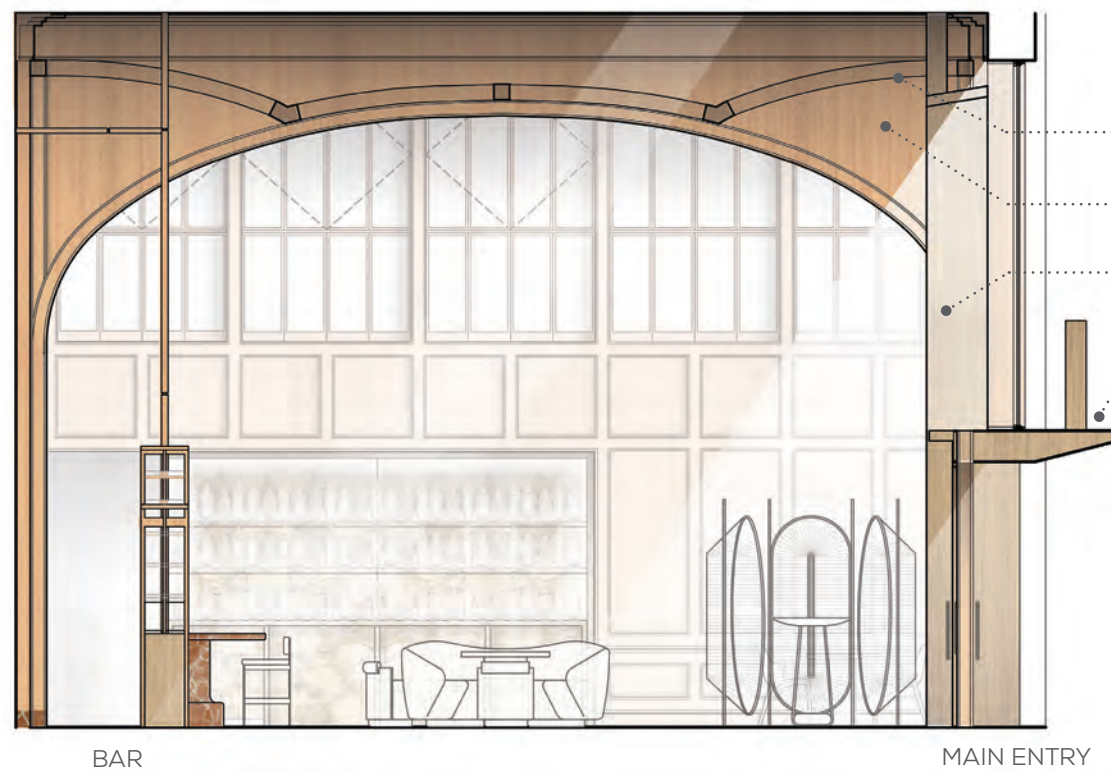
- .....REFRIGERATED CHEESE DISPLAY
- .....SUSPENDED FOOD DISPLAY
- .....ILLUMINATED WOOD, GLASS & METAL VITRINE
- .....OPEN PANTRY DISPLAY
- .....CARVED HONED MARBLE DINING COUNTER
- .....CURVED METAL INTEGRATED ICE WELL & WORK SURFACE

03 GROUND LEVEL DINING ROOM, AIRE THE ATMOSPHERE OF THE PERFORMANCE, ELEVATIONS



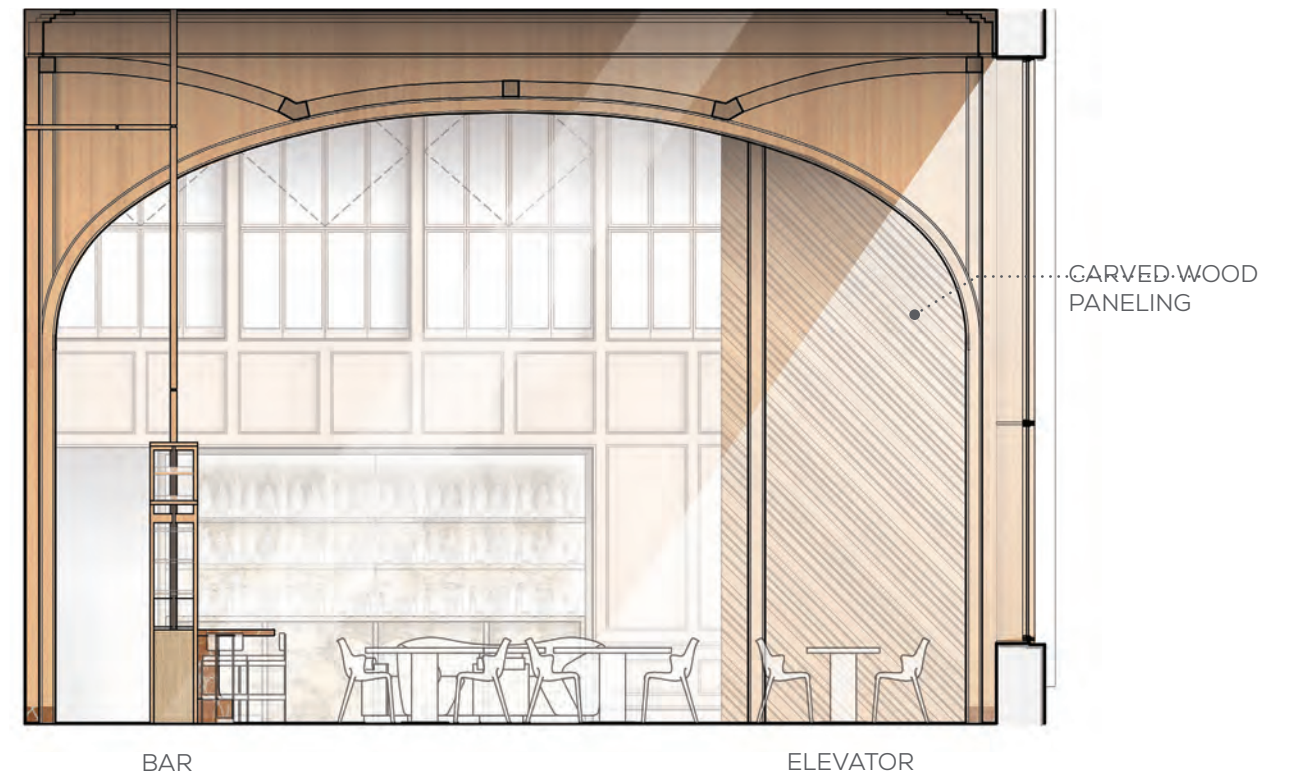
03 GROUND LEVEL DINING ROOM, *AIRE THE ATMOSPHERE OF THE PERFORMANCE*, ELEVATIONS

EAST ELEVATION-MAIN ENTRY



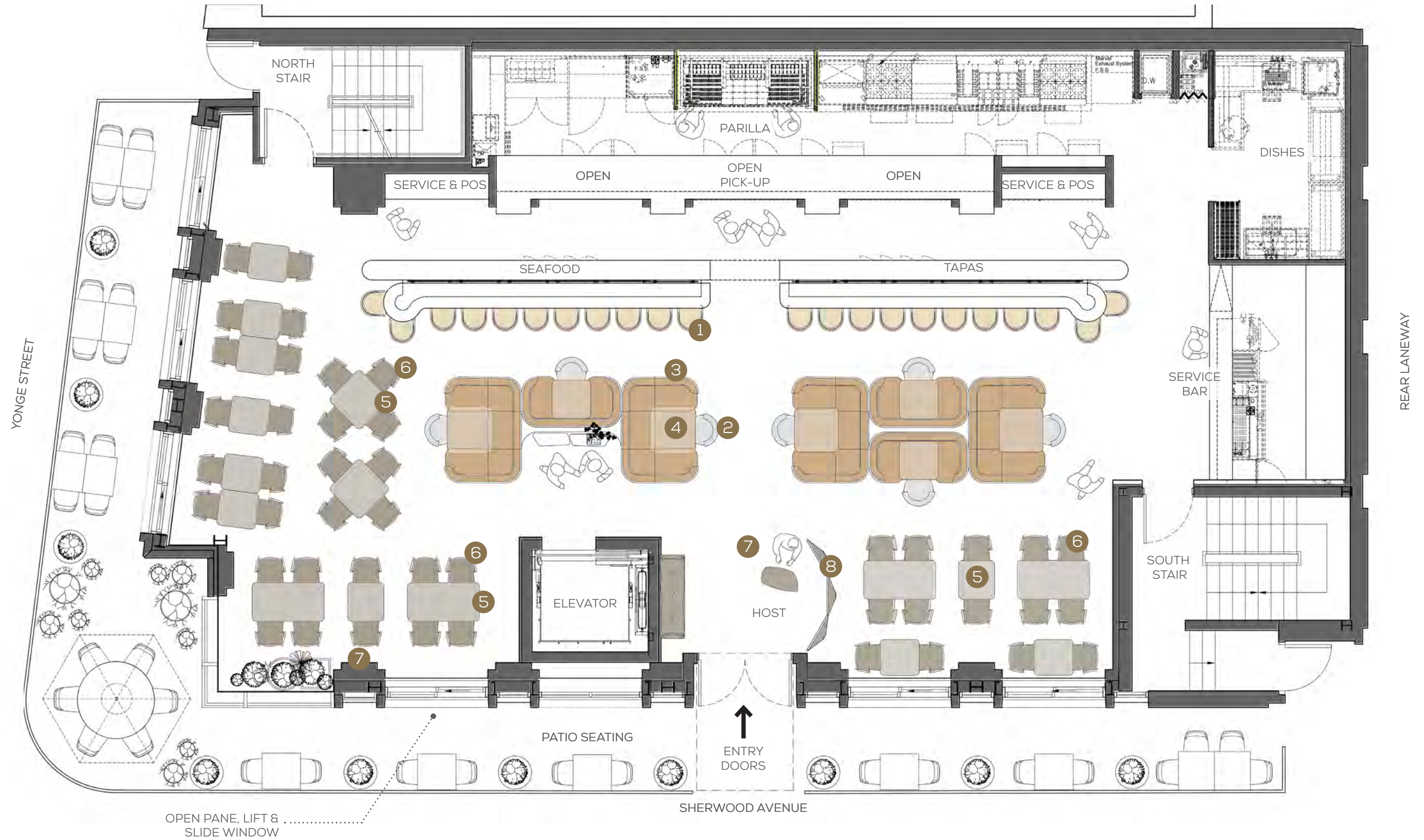
- SUSPENDED OPEN FRAME
- SOLID WOOD CEILING
- FRAME-WORK
- WOOD paneled ARCHWAY
- CURVED METAL
- ENTRY SURROUND
- ILLUMINATED SIGNAGE &
- METAL CANOPY

EAST ELEVATION-ELEVATOR



- CARVED-WOOD
- PANELING

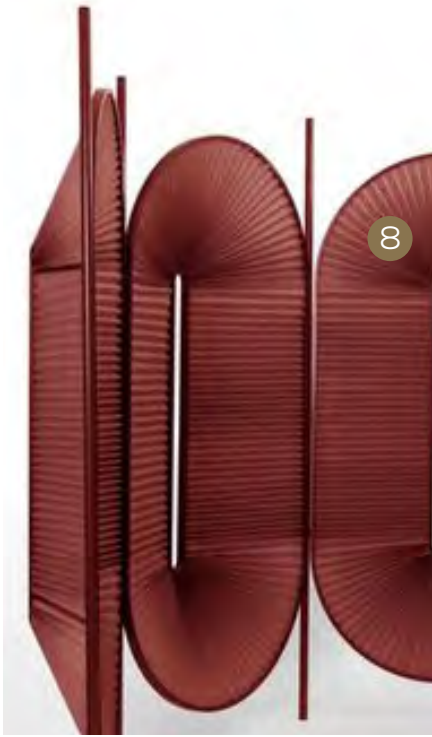
03 GROUND LEVEL DINING ROOM, AIRE THE ATMOSPHERE OF THE PERFORMANCE, FURNITURE PLAN, 95 SEATS + 32 PATIO SEATS



03 GROUND LEVEL DINING ROOM, AIRE THE ATMOSPHERE OF THE PERFORMANCE, FF&E CONCEPTS



CENTRAL BANQUETTE



HOST SCREEN



COUNTER HEIGHT STOOL



COMPACT CHAIR

FIXED TABLE



WALL SCONCES



DINING TABLES



LEATHER DINING CHAIRS



HOST STAND

ESO ES !  
(THAT'S IT !)